

BEST HOMES

ALSO REACHING MISSISSAUGA, CAKVILLE, BURLINGTON, GUELPH & CAMBRIDGE

The Canadian Champion

Milton, Ontario

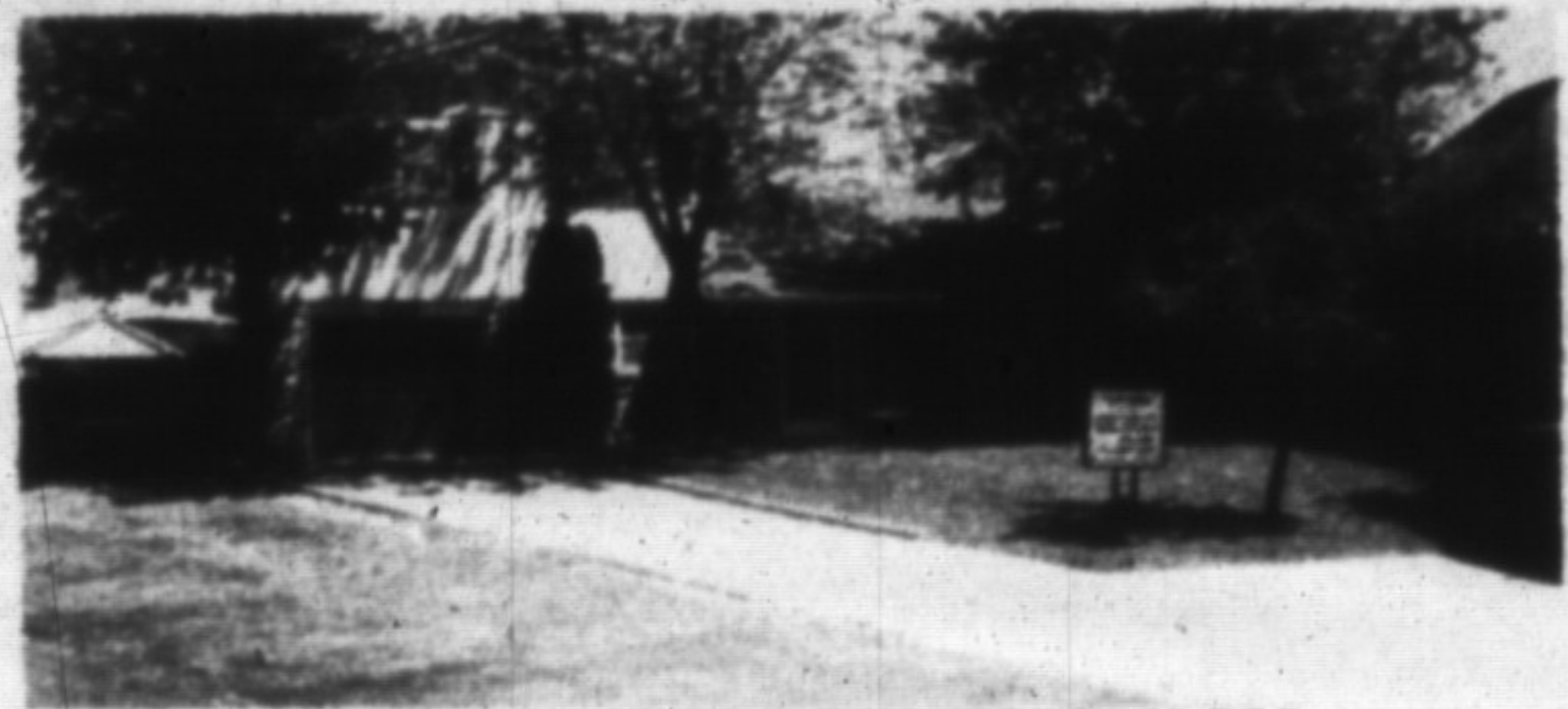
June 6, 1990



YOU GOTTA SEE THIS

Robertson built custom home on a lovely 3/4 acre wooded lot. Enjoy the warmth & ambiance of hamlet living. Just 5 mins. from 401. The perfect family home with quality throughout. Priced right at \$319,000, 10% until July '92.

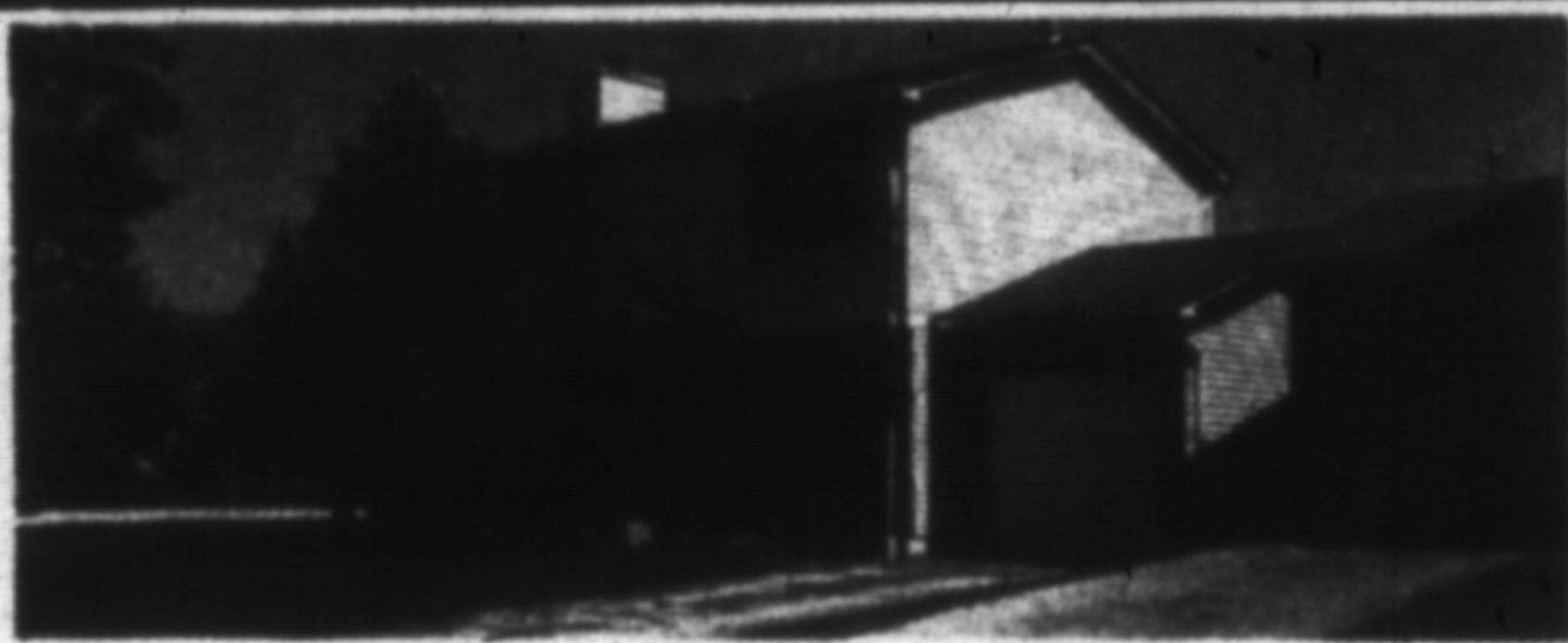
COUNTRYWIDE CAMPBELLVILLE REALTY
HEATHER ASHBE 854-2294



ATMOSPHERE FOR CHARM - \$249,900

Rustic gates swing open to reveal lovely yard with inground pool. Home features 4 bedrooms, large sunny kitchen with walkout to deck, lots of parking and central air. Call Sandi Kinsale to view.

ROYAL LEPAGE REAL ESTATE
SANDI KINSALE 878-8101



OPEN HOUSE SUN, JUNE 10, 1-4 THERE ISN'T A BETTER BUY IN MILTON

You won't get a second chance to get a first look at this superb two storey on a large lot featuring fireplace, central air, separate dining room and walkout from eat-in kitchen to new dec.

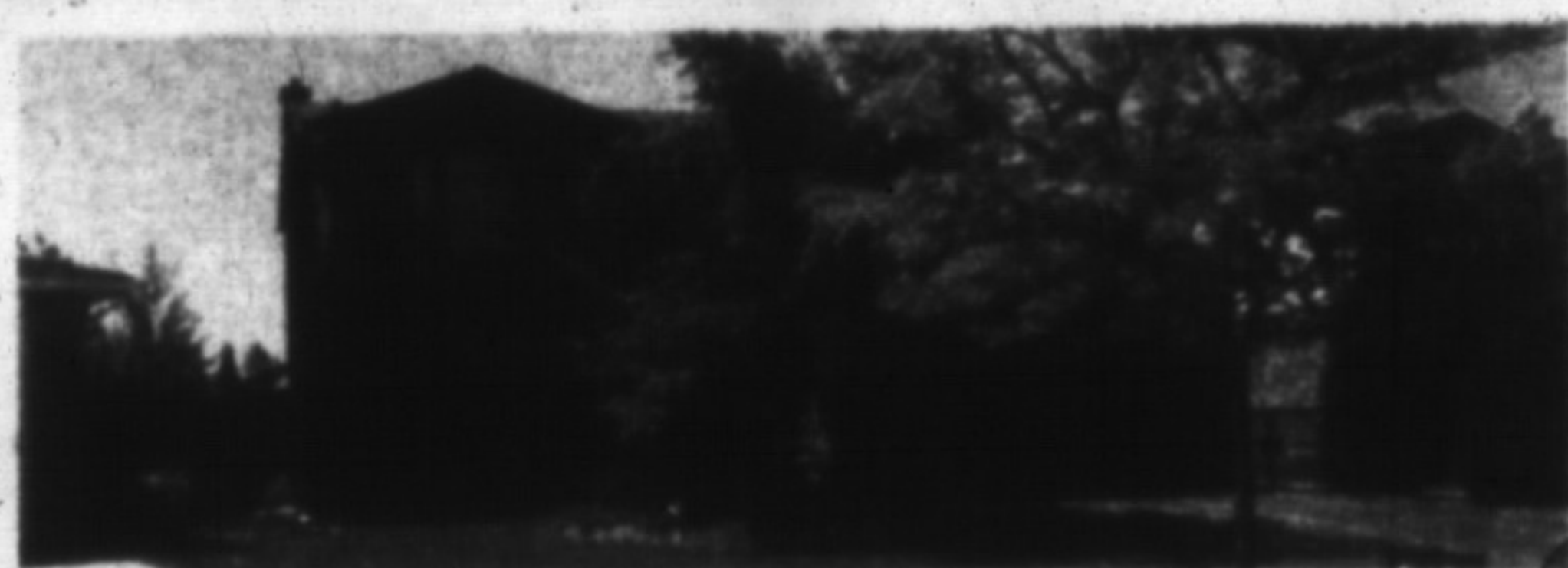
ROYAL CITY REALTY
CAROLE D. BUDWORTH 878-1156



DON'T OVERLOOK...

The quality of this all brick backsplit located on Valleyview Cr. Eat in kitchen, main floor family room, den with walkout to bbq, finished basement with extra bedroom and whirlpool tub, central air and there's more. Asking \$295,000.

ROYAL CITY REALTY
LAWRIE GIVEN 878-1156



TIME TO MOVE UP!!

You've worked hard for a long time and now you deserve a home with the best of everything. 4 bedrooms, separate living/dining areas, family room with wet bar, exceptional rec room with a wall to wall "fireplace - entertainment centre," pool and park setting out the back. Make this home yours by calling Gary Thomas Broker/Owner. \$299,000.

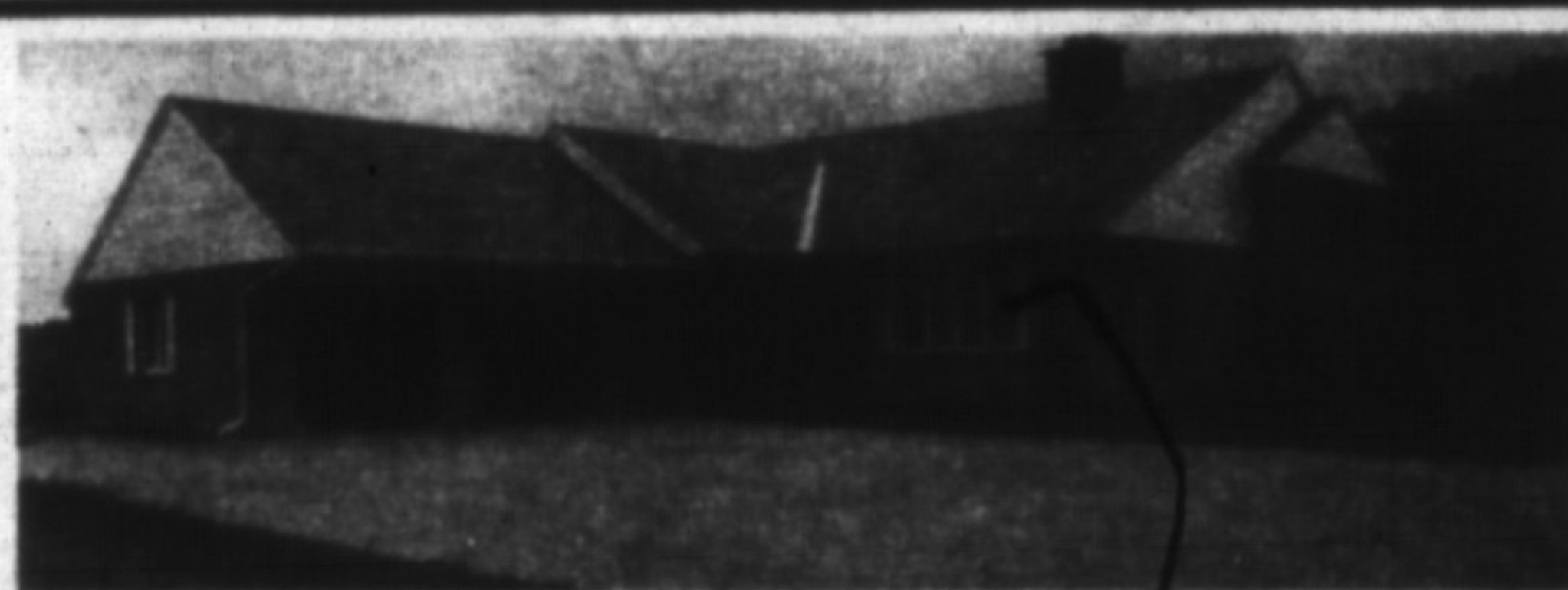
REMAX MILTOWNE REALTY CORPORATION
GARY THOMAS 878-2365



CAMPBELLVILLE VILLAGE SETTING

All brick with 3 bedrooms, 2 bathrooms, eat-in size kitchen, large fenced backyard. Please Call:

REMAX MILTOWNE REALTY CORPORATION
CAROL BROOKS 878-2365



COMMUTER COUNTRY

Stone tri-level 4 bedroom home mins north of 401 on Guelph Line in quiet Moffat. Has all the charm of country life, including stone fireplace in sunken living room with cathedral ceiling, pine railings and trim throughout. Finished lower level with walk-out to deck, over 2800 sq. ft. of finished living space priced at \$395,000. IT'S WORTH THE DRIVE TO MOFFAT! To view this country classic call:

CENTURY 21 GOLDEN REAL ESTATE LIMITED
CHARLES KERR or SCOTT B. PRIOR 878-8495



11% ASSUMABLE MORTGAGE

2 bedroom bungalow with double detached garage and main floor family room. Conveniently located on 63' x 120' lot, within walking distance to downtown. DON'T MISS OUT! PRICED TO SELL - \$176,900. Contact Debra Sine today to view #21.

REALTY WORLD - W.J. McCRUDDEN REAL ESTATE INC.
DEBRA SINE 878-1133