

Region Briefs

Dump declared a hazardous waste free zone

Halton Region intends to keep hazardous household waste out of its new Milton landfill, slated to open in two years.

Last Wednesday council set a goal of implementing the ban in two years.

In the meantime, it will work on a two-pronged public relations strategy — developing an educational and promotional program for local residents, and lobbying senior levels of government for tougher legislation.

Burlington councillor Walter Mulkeiwich had expressed concern that provincial legislation preventing toxic wastes from entering municipal garbage dumps currently exempts household hazardous wastes, such as paint or spent solvents.

He advised council of an Ontario Waste Management Corporation (OWMC) newsletter indicating that "household hazardous wastes are every bit as damaging to the environment as their industrial counterparts.

Presently, there is no legislative framework governing the management and disposal of household hazardous waste in Ontario."

Halton presently runs two household hazardous waste depots — one in Milton which operates every Thursday to Saturday, and another in Burlington which operates one Saturday a month.

Night meeting

The Toronto area's impending garbage crisis and Halton's role in solving it will be the subject of a special meeting of the Region's planning and public works committee June 20.

Although the Region usually holds its meetings during the day, last Wednesday council approved an evening meeting to make it easier for the public to attend.

The meeting is expected to determine the degree to which Halton will cooperate with other Toronto area municipalities in solving the garbage crisis.

Spills bill

In the event of a chemical spill in the region who're you gonna call? The Emergency Spills Response Team, of course.

Last year, the Region's toxic waste fighters — there are nine of them, specially trained — responded to 61 calls, chalking up a bill of about \$23,000.

Vic Lesnicki, the Region's manager of industrial waste, said most of the spills involved minor petroleum leaks, but there were some notable exceptions:

- Skim milk in an Oakville sewer on July 17.
- Dead ducks at Rambo Creek in Burlington on Aug. 26.
- Dead fish in a drum in Oakville on Aug. 2.

Milton calls included a diesel fuel spill and fire at Glen Eden on Jan. 15; an engine oil leak on Millside Drive Feb. 1; oil in 16 Mile Creek on March 26; paint in a drainage ditch on March 28; a diesel fuel spill at the intersection of Trafalgar and Britannia roads on June 27; paint cans in a ditch on Oct. 23; a gas leak at the Martin Street Shell station on Nov. 30; gas odours on Martin Street on Dec. 12 and an oil spill on Nipissing Road on Dec. 20.

Milton and other Halton municipalities are also becoming more involved in spill response.

Milton public works superintendent Rick Tipping said six town employees recently participated in a three-day seminar hosted by the Region, and that a van specially equipped for spill containment and clean-up is slated to be in service this summer.

Halton Hills, Oakville and Burlington, he noted, already have their own vehicles in place.

BURLINGTON TOYOTA

AT BURLINGTON TOYOTA, YOU'LL FIND

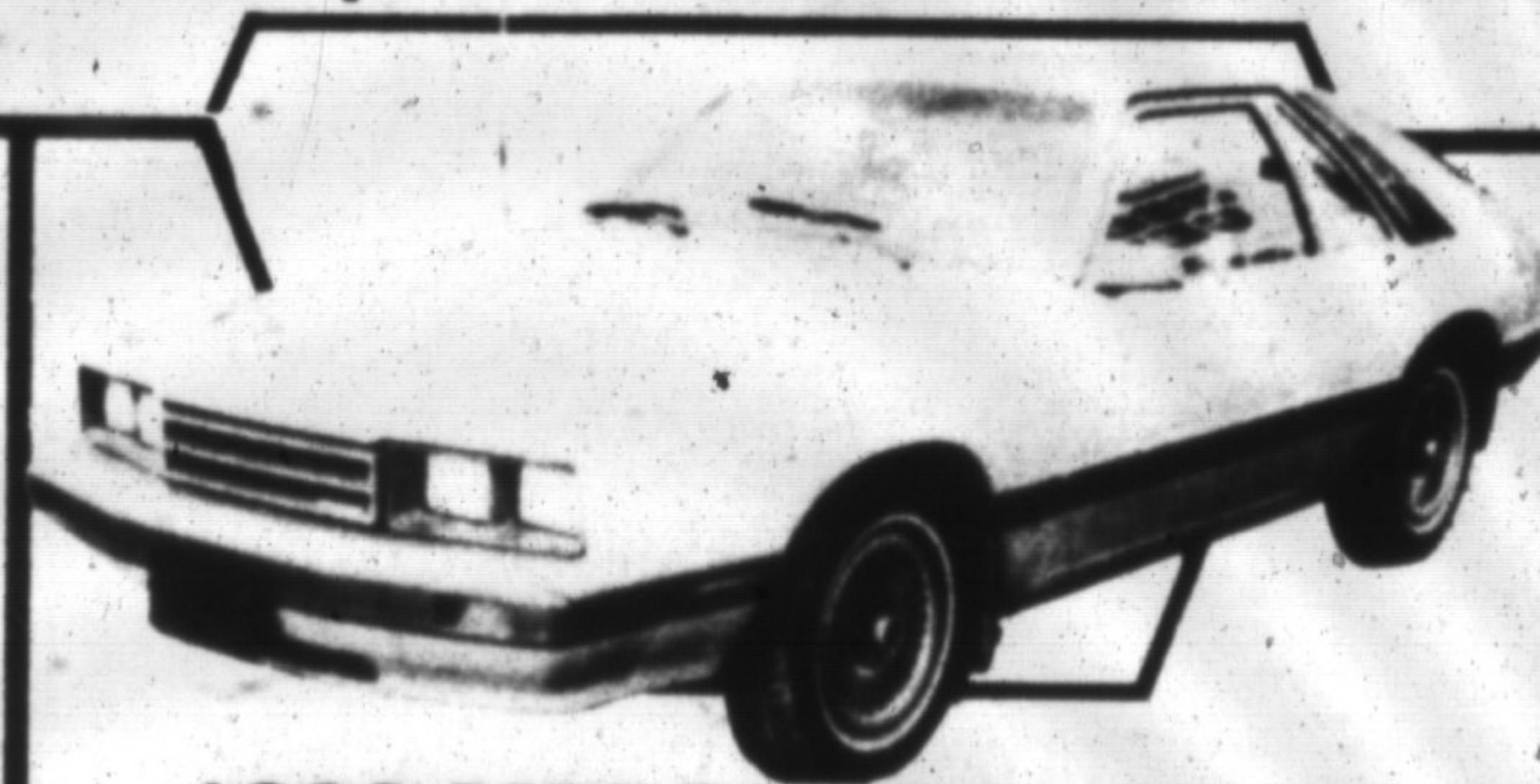
SOMETHING FOR EVERYONE USED CARS & TRUCKS



VEHICLES IN STOCK MEANS YOU CAN SEE WHAT YOU WANT AND MAKE THE DEAL YOU WANT



Special of the Week



1990 CHEVROLET LUMINA

APV 6-passenger van, V6, automatic, air conditioning, power windows, door locks, tilt, cruise, AM/FM CASSETTE. MUST BE SEEN. Less than 8,000 miles. Stock #3216

\$23,990

1983 FORD FUTURA

Charcoal grey and silver two-tone with plush burgundy interior, 6-cyl., automatic, power steering and brakes, custom radio and more. MUST BE SEEN. Less than 36,000 miles. Stock #90-547A

\$5,990

1986 MERCURY CAPRI GS

2-door liftback, automatic, power steering, brakes, 6-cyl., air conditioning, power windows, AM/FM stereo cassette, gauge package, tilt wheel and more. Less than 49,000 miles.

\$8,990

Stock #90-056A

1986 TOYOTA LE VAN

7-passenger, dual air conditioning, power windows, door locks, tilt, cruise, AM/FM cassette and much more. Less than 58,000 miles. Stock #90-639A

\$12,990

1985 TOYOTA TERCEL

3-door liftback, automatic, rear wiper/washer, AM/FM cassette and more. Less than 61,000 miles. Stock #90-662A

\$5,990

1989 ISUZU LS EXT. CAB 4 X 4

5-speed, bucket seats with rear jump seats, aluminum wheels, white letter tires, AM/FM stereo, boxliner and much more. Less than 4,000 miles. Stock #90-636A

\$15,990

1987 MAZDA 323

Station wagon. 4-door, 5-speed, sunroof, AM/FM stereo, rear wiper/washer and more. Less than 56,000 miles. Stock #90-710A

\$7,990

1986 TOYOTA CELICA

GT coupe, automatic, power steering and brakes, AM/FM stereo, sunroof and more. Less than 28,000 miles. Stock #90-723A

\$11,990

1986 TOYOTA CAMRY

5-speed, power steering, air conditioning, AM/FM stereo system and more. Less than 86,000 miles. Stock #90-509A

\$8,990

1985 NISSAN 300ZX TURBO

2+2, T-bar, air conditioning, power windows, door locks, aluminum wheels, AM/FM stereo cassette and much more. Less than 43,000 miles. Stock #3921

\$13,990

1983 CELICA GTS

High gloss black finish, very rare model. 5-speed, premium AM/FM cassette, aluminum wheels, sport seats and much more. Less than 56,000 miles. Stock #89-302A

\$8,990

1987 TOYOTA CAMRY LE

Automatic, power steering, brakes, air conditioning, AM/FM stereo, plush interior and more. Less than 38,000 miles. Stock #90-575A

\$14,990

1987 TOYOTA CRESSIDA

Top-of-the-line, tempmatic air conditioning, power windows, door locks, tilt, cruise, AM/FM stereo cassette and much more. Less than 61,000 miles. Stock #3221

\$15,990

* SUBJECT TO PRIOR SALE

* SALES TAX & LICENCE EXTRA

PRICES EFFECTIVE TILL JUNE 6/90



BURLINGTON TOYOTA sales & leasing
1249 GUELPH LINE
335-0223

