

Sportscoreboard

Girls T-Ball

Starship Transportation 35 Conservatory Of Music 29

The leading hitters for Starship were Reana-Dawn Worrell with two homers and a single; Katherine Fitzmaurice with two homers and two singles; Lauren Bowness and Natalie Vandermaaden with four hits apiece; and Arne Jamiesen with three hits.

Leading Conservatory were Nicola Kidd with a homer, double, and single; Amy Hall McLaughlin with a triple, double, and two singles; Sarah Dumrosi with a triple and three singles; Jana Mountain with a double and three singles; and Kim Durante with a double and two singles.

Starship's excellent hitting in the second inning led this victory despite good fielding by Lauren MacDonald and Amy Hall McLaughlin.

CMI 27

Audrey Meredith 20

Leading the CMI attack were

Taryn Lee with a double, triple, and two singles; Lauren Scarsala with two triples and a single; Michelle Merkley with a triple, and two singles; Stephanie Harrison with a double and three singles; and Crystal Murray with a double, two singles, and three RBIs as last batter.

Leading Audrey Meredith were Meaghan Lewington with four hits; and Tara Elkie, Carley Frenz, Amanda Powell and Alex Kocenas with three hits apiece.

**Trafalgar Capital Mgmt. 28
Presto Pools 28**

Pacing Trafalgar Capital Management were Kathleen Charko with a homer and two hits; Erin Skalski with a triple and three hits; and Kelly Young, Katie Patrick and Cambria Lett with four hits apiece.

Scoring for Presto Pools were Shannon Deli with two homers, a double and a single; Erin Chaisson with two triples and a double; Jenny De Ryk with a triple and two singles; Nadia Delivio with a double and

three singles; and Laura Cook with a double and three singles.

In a tight game throughout, Presto's Shannon Deli's three-run home run ended the game in a tie. Excellent fielding by Kristen Roberge, Lorrie Dunn and a home run by Kathleen Charko kept Trafalgar close to the end.

**KLA Consulting 26
Halton Credit Union 19**

Leading KLA Consulting were Shannon McManus with two homers and two singles; Laura Goodbrand with two homers and a single; Becky Paul with five singles; Tarah Graham with a triple and three singles; and Mesia Ewan with four singles.

Scoring for Halton Credit Union were Kimmie Parker with a homer and three singles; Sarah Gagliardi with a triple and four singles; and Lindsay Grisold, Lisa Jones and Nicole Stewart with five singles each.

Strong bats in the fifth inning, and excellent fielding by Tara Fiorita and Kimmie Parker were not enough to overcome KLA's Shannon McManus and Laura Goodbrand two home runs each, and solid fielding by Amy West, Tarah Graham and Jennifer Kornack.

**Spectrum Airways 28
Lady Footlocker 20**

Scoring for the winning team were Laura Goodbrand with three homers and a single; Jennifer Hayward with a homer, double and single; Carolyn Kovachik and Katina Kovachik with four singles each; and Elizabeth Cook with three singles.

The leading hitters for Lady Footlocker were Elizabeth Gregory with three singles; Stacey Osborne with a triple and single; and Adriana McVicker, Natasha Hooper and Jennifer Batnoff with two singles each.

The highlight of the game were Spectrum Airways' strong bats as-

sisted by home runs by Jennifer Hayward and Laura Goodbrand, solid hits by Carolyn and Katina Kovachik, Melissa Waters and Elizabeth Cook, and good defence by Pam Hicks led to a win over Lady Footlocker.

**D & S Signs 32
Optimists 28**

Scoring for winning team were Spring Lacourse with two homers, and a double; Virginia Young with a homer, triple and two singles; Erica Cranford with a homer, triple, and single; Danielle Shull with four singles; and Stacey Massey with three singles.

Scoring for Optimists were Jessica Welstead with a homer and three singles; Jackie Suttman with a double and two singles; Jennifer McManus with a double and two singles; and Jennifer Pender, Terri-Lynn Davison and Stephanie Rammo each with four singles.

With a strong first inning, including home runs by Erica Cranford and

Spring Lacourse, D & S Signs scored enough runs to overcome a second and third inning charge by Optimists which included a home run by Jessica Westead, and doubles by Jackie Suttman and Jennifer McManus.

**Shooshan Enterprises 21
Feherguard Products 19**

The leading hitters for the winning team were Sandra Systma with two homers and a triple; Jennifer Richardson with a triple and three singles; Lindsay Nemeth with a homer and two singles; Sherylene Leslie with four singles; and Christina Hutchinson with three singles.

The leading hitters for Feherguard Products were Deana Wilson, Andrea Fagnani, Nicole Woodcock, Meghan Dix-Dunster and Crystal Newton with four hits apiece.

Despite strong defence by Angie Clarke and Crystal Newton of Feherguard, Shooshan's strong hitting in the third inning including a home run by Sandra Systma helped take control of the game.

Rep Softball

Legion girls shut down Cawthra 18-0

It was total domination. Milton's girls midget rep softball team crushed Cawthra 18-0 in their home opener at Rotary Park last Monday.

The Milton-Legion was led to the win by the pitching of Shannon Jeffrey and a stingy defence in the season opener for both teams.

Milton pounded out 12 hits while limiting the visitors to only a pair.

Jeffrey struck out 10 Cawthra batters and managed a home run for the winning side.

Offensively, Karen Haringa had a triple and a double, Anissa Poloni legged out a triple, as did Janet Colling, Angie Hewitson, popped a double and two singles while Cheryl Pinsent, Melanie Hewitson and Kim Lee all chipped in with singles.

The Legion hits the field next on May 21 when they host Georgetown.

Novice girls

Milton Freightfast devastated Brookville 24-0 in the novice reps' season opener at Rotary Park on Monday.

Krista Todd bombed two dingers and chipped in a single and matched the efforts of Erin Young to spark the offence while Jayne Currie fashioned a two-hitter from the mound.

Milton hammered out 25 hits in the assault on Brookville.

In addition to Young and Todd, Julie Burnett and Corinn Jeffrey each had a triple and a double while Alicia Gunn and Jayne Currie shot out three singles each. Roberta Taylor, Lisa Donegan, and Shailene Jeffrey each chipped in with a pair of safeties.

Amanda Bonnell and Kirsten Hand were the Brookville players with hits.

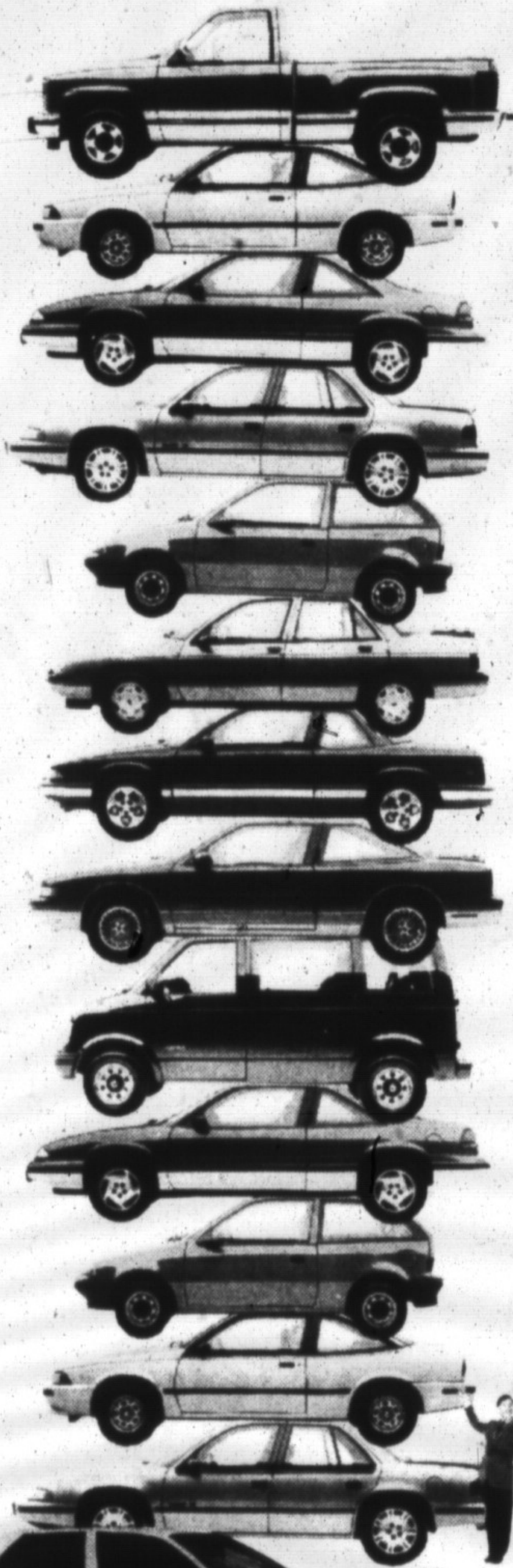
Heady ladies down Acton 3-1 in soccer action

Milton's Heady's Haircutting got off to a winning start in the Ladies Soccer League season opener, claiming a 3-1 victory over Acton.

Acton managed the first goal of the contest in the first half to lead 1-0. In the second half Wendy Marek scored on a pass from Sue Fororivle to knot the score.

Karin Abbott started a play which resulted in a goal for Milton and gave them a 2-1 lead.

They added to it when Sue Rose crossed the ball to Karen Agate, who had no trouble putting the ball and the game away for the locals.



**NOBODY STACKS UP TO GM.
CHEVY CORSICA LT AND PONTIAC
TEMPEST WITH V6 POWER**

**UNDER
\$15,500***

Find all the family car you'll ever need right now at your GM Dealer. Check these features:

- Powerful 3.1 litre V6 MFI engine
- No-Charge air conditioning
- Automatic transmission
- Power steering and brakes
- AM/FM stereo cassette with clock seek/scan and 4-speaker system
- Reclining front bucket seats with cloth trim
- Floor console
- 5-passenger comfort
- Soft-ray tinted glass
- Intermittent windshield wipers — and much, much more

**10.9%
NO LIMIT
FINANCING***

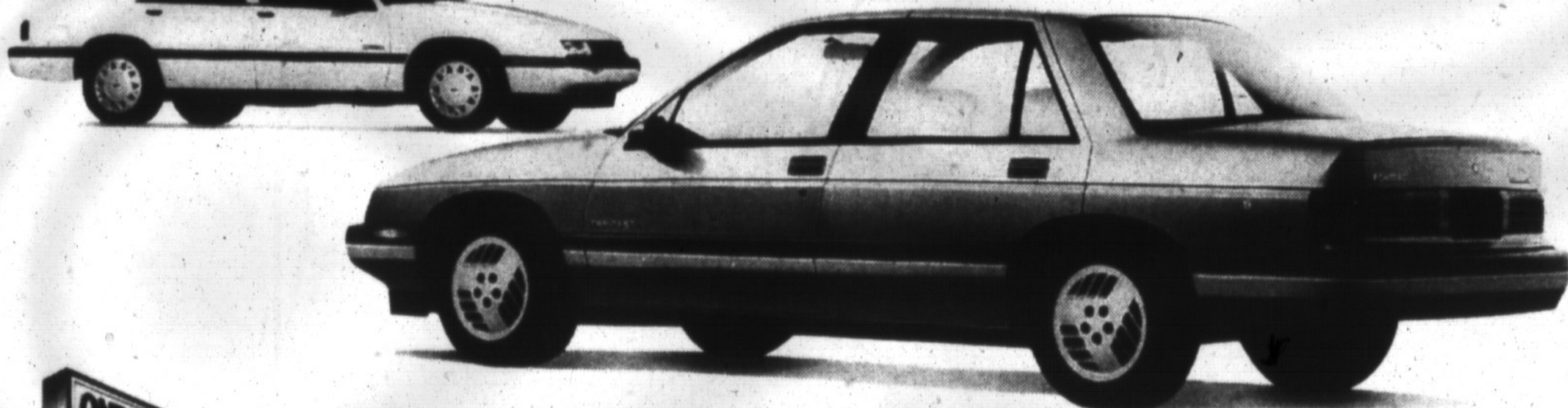
UP TO 4 YEARS

**OR ON OTHER SELECTED MODELS GET
UP TO A \$1,000 REBATE***

Compare for yourself. When you want a good deal on a wide selection of cars, nobody stacks up to your GM Dealers. For a limited time, take advantage of this straight, no-nonsense financing offer on our most popular GM models, including:

SPRINT	CORSICA	LUMINA	CHEVY & GMC
FIREFLY	BERETTA	GRAND PRIX	COMPACT VANS
CAVALIER	TEMPEST	CUTLASS SUPREME	CHEVY & GMC
SUNBIRD		REGAL	COMPACT AND
			FULL-SIZE PICKUPS

Save on leasing, too. Ask your participating GM Dealer for details on similar retail lease savings on these models with SmartLease™.



Your GM Dealer's right here for you

CHEVROLET • PONTIAC • OLDSMOBILE • BUICK • CADILLAC • CHEVY & GMC TRUCKS

*MSRP for the new 1990 Chevrolet Corsica LT is \$15,051 equipped as described. MSRP for the new 1990 Pontiac Tempest is \$15,473 equipped as described. Dealer may sell for less. Price includes air conditioning or no extra charge on specially equipped new and unused 1990 models for a limited time only. Vehicles may not be immediately available from dealer stock. Dealer order may be required. Freight charges, insurance, license and applicable sales taxes (including federal excise tax) not included. See your individual dealer for freight charges.

10.9% financing offer available with no less than \$1,000 down on new and unused or demonstrator 1990 and prior year models of Chevrolet Sprint, Cavalier, Corsica, Beretta and Lumina; Pontiac Firefly, Sunbird, Tempest and Grand Prix; Oldsmobile Cutlass Supreme; Buick Regal; Chevy Astro and GMC Safari compact vans; Chevy and GMC compact pickups (including extended cab and Chevy 4x4's models) purchased from dealer inventory. Offer valid for a limited time starting May 5, 1990 on retail purchases only.

Some models may not be immediately available from dealer stock. Fleet orders are ineligible for this offer. The buyer will be responsible for the payment of applicable taxes, including federal excise tax, license, insurance and applicable freight charges at the time of the transaction. Offer available only to qualified retail buyers financing their purchase through GMAC on a maximum 24 month financing contract.

GMAC may require a down payment. All credit applications will be subject to approval by GMAC. Offer includes Dealer and Dealer Association participation.

Example: For \$15,000 financed 48 months at 10.9% A.P.R., the monthly payment is \$386.95. The cost of borrowing is \$3,573.00. Approved credit.

Or choose a \$1,000 rebate in lieu of 10.9% financing offer on new and unused or demonstrator 1990 and prior year models of Chevy Astro and GMC Safari compact vans, and Chevy and GMC full-size C/P pickups (including extended cab and Chevy 4x4's models). Or choose a \$750 rebate in lieu of 10.9% financing offer on new and unused or demonstrator 1990 and prior year models of Chevy and GMC compact pickups (including new and unused or demonstrator 1991 models), and Chevy Cavalier and Pontiac Sunbird.

Offers may not be combined. Offer available only to qualified retail buyers and can only be applied to the transaction. Assuming a \$1,000 rebate on the alternative on selected trucks, legislation requires that the value of the \$1,000 rebate be included in the cost of borrowing example in order to arrive at an effective interest rate. In the example given, the effective interest rate would be 12.71% A.P.R. and the total cost of borrowing including \$1,000 rebate net value, would be \$4,573.00.

SEE YOUR PARTICIPATING GM DEALER FOR FULL DETAILS.

ONTARIO GM DEALERS FEDERATION, c/o 1200 Eglinton Avenue East, Dan Mills, Ontario M3C 1J1



VEHICLES MAY NOT BE EXACTLY AS SHOWN