

A&P When The Stars Come Up, Prices Come Down!

Reach For The Stars And Save!

MOST STORES CLOSED MAY 21ST, 1990

BLUE JAYS
DON'T BE DISAPPOINTED.
Be an Early Bird!
PURCHASE YOUR HALF PRICE COUPONS EARLY AND EXCHANGE THEM AT THE GAME.
BLUE JAYS TICKETS
TO THE GAMES OF YOUR CHOICE

Tuesday & Wednesday Only

PARTLY SKIMMED 4 L BAG

2% Milk
SAVE
1.00
WITH COUPON

WITH THIS COUPON VALID UNTIL WEDNESDAY

Partly Skimmed, 4 L BAG

2% Milk
SAVE
1.00

LIMIT: 1 bag per coupon. Offer valid Tuesday & Wednesday May 22nd & 23rd, 1990. (Feature price without coupon.) S.C. #287

FRESH

Lean Ground Beef

4.39/kg

1.99
lb

PRODUCT OF CALIFORNIA, NO. 1

Fresh Broccoli
BUNCH

.79
EA

Tuesday thru Saturday

WITH THIS COUPON

RICH BLEND, VINA COLOMBIA

Nescafe Instant Coffee

100 - 250 g

3.88

LIMIT: 1 per coupon. Offer valid thru May 26th, 1990. (Feature price without coupon 4.88) S.C. #288

WITH THIS COUPON

REGULAR LIQUID

Javex Bleach

3.6 L

.99

LIMIT: 1 per coupon. Offer valid thru May 26th, 1990. (Feature price without coupon 1.99) S.C. #289

WITH THIS COUPON

REGULAR OR DIET INCLUDING DECAFFEINATED DIET COKE

Coca-Cola or Sprite

750 mL BOTTLE (Unit cost 79¢ per 100 mL)

5.99

LIMIT: 1 each per coupon. Offer valid thru May 26th, 1990. (Feature price without coupon 6.99) S.C. #290

REGULAR OR DIET INCLUDING DECAFFEINATED DIET COKE

Coca-Cola or Sprite

750 mL BOTTLE (Unit cost 79¢ per 100 mL)

.59

PLUS 40¢ PER BOTTLE DEPOSIT

SELECTED VARIETIES

McCain Juices

3 - 250 mL TETRA PAK

.99

LIMIT 4 PER FAMILY PURCHASE

JANE PARKER

Rhubarb Apple Pie

604 g SIZE

1.39

FROZEN, SELECTED FLAVOURS

A&P Ice Cream

3 L CARTON

1.99

WITH THIS COUPON

SELECTED SIZES

Huggles Diapers

PKG OF 24-36'S

9.99

LIMIT: 1 pkg per coupon. Offer valid thru May 26th, 1990. (Feature price without coupon 10.99) S.C. #291

Outdoor Garden Centre OPEN SUNDAY
IN THE FOLLOWING AREAS ONLY:

53 Quinte St. - Trenton
125 Hope St. S. - Port Hope
185 King St. E. - Bowmanville
470 Dundas St. E. - Belleville
401 Kent St. W. - Lindsay
154 Chemung Rd. - Peterborough
303 King St. E. - Gananoque
480 Centre St. - Niagara
67 Main St. - Picton
4 King St. - Orillia
40 Ridge Rd. - Deep River
Highway 118 W. - Bracebridge

AP COMMITTEE FOR FAIR SHOPPING When it comes to Sunday Shopping the real issue is Fairness. And your Right to Choose.

PRICES EFFECTIVE THRU SATURDAY, MAY 26TH, 1990, EXCEPT WHERE INDICATED

A&P

We reserve the right to limit quantities to normal family requirements. Savings shown in \$10 ad based on current Metropolitan Toronto A&P retail.

A&P FOOD STORES

Auction to feature stars, bargains

By KAREN SMITH
Country singer and well-known television star Gordie Tapp is one of many celebrities scheduled to appear at an auction to raise money for Halton Waldorf School June 2.

Award-winning country singer Gary Buck, members of the Toronto Argonaut Football Club and current and former NHL players will also be in attendance at the event.

The auction, at Brookville Community Centre, will include more than 200 items. Original paintings by Vincent Frances and L. M. Hyde, a 1990 Mazda sports car, a two-carat emerald cocktail ring and television satellite system are some of the highlights.

"The range of items up for auction promises to satisfy collectors of the curious and the unique, as well as pique the interest of those looking for genuine bargains or certain luxury items," said Janet Myers, of Halton Waldorf School.

Many unique services will also be auctioned off. A test ride with Toronto Star columnist Jim Kenzie in a luxury car and a personal tour of the Royal Botanical Gardens with director Alan Paterson are two excursions that will be offered for sale.

The Campbellville Road school is a non-profit independent facility offering kindergarten and elementary programs. It is part of an international educational movement that began

in 1919. There are 400 schools worldwide.

Waldorf education seeks to foster a joy for learning among its students as well as promote social awareness, self-esteem and reverence for the world, said Mrs. Myers.

"Tuition fees are kept low in order to make the school accessible to middle income families. For this reason, the school undertakes various fundraising activities throughout the year, with the auction being the most am-

bitious to date."

The auction will begin at 11 a.m. after a preview which starts at 9 a.m. Morning snacks, lunch and alcoholic beverages will be available. Admission and parking is free.

Brookville Community Centre is five minutes north of Highway 401 on the west side of Guelph Line.

For a complete list of auction items or other information, contact Dorothy Olsen or Janet Myers at 854-0191, or Brian Havens at 853-2049.

Foe is Newmarket

Participaction challenge involves just 15 minutes

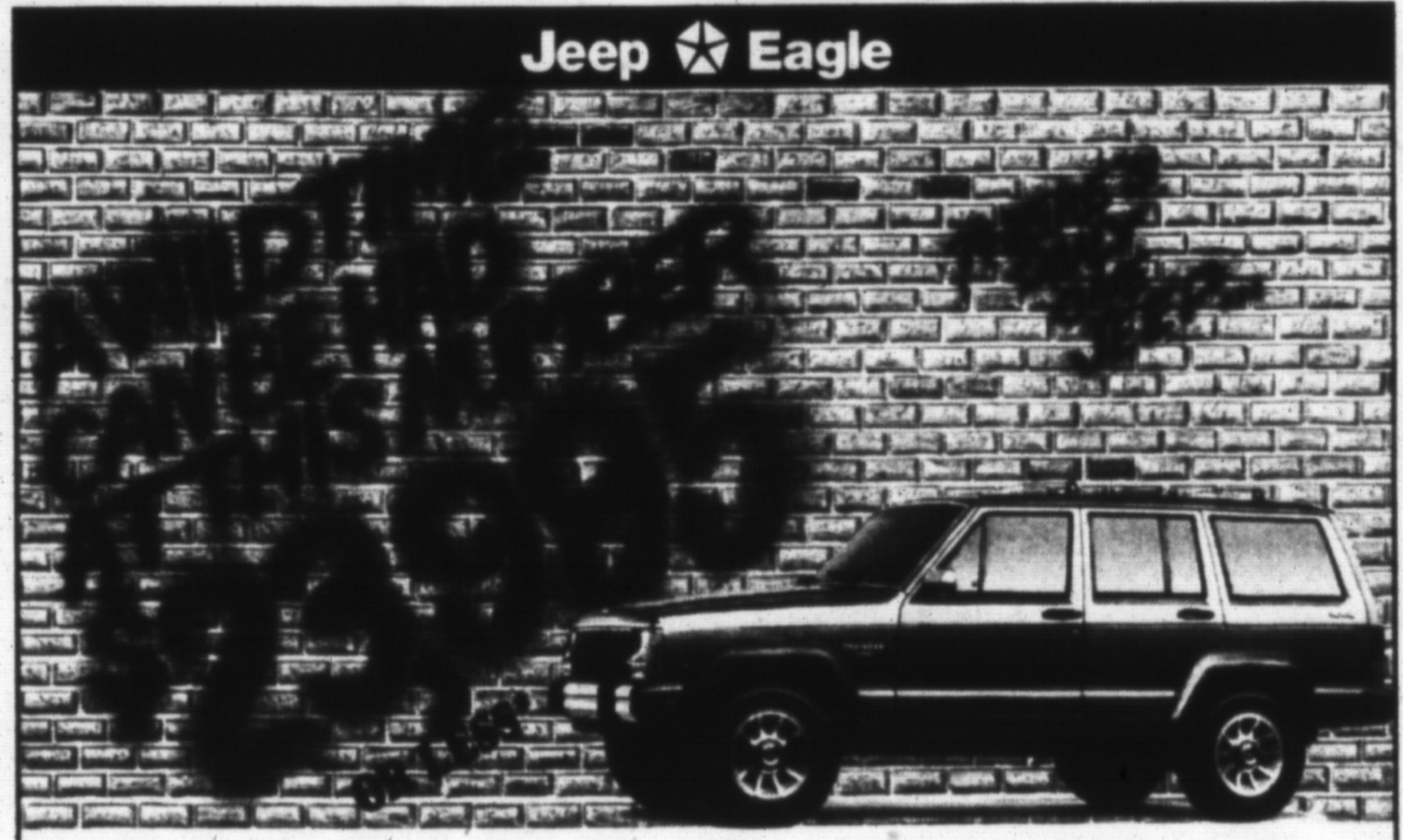
The Participaction Challenge is coming soon. Let's win it this year! On May 30, do a minimum 15 minutes of physical exercise and call town hall at 878-7211 from 9 a.m. to 10:30 p.m.



Milton has been challenged by Newmarket (they figure they can beat us again this year). The town with the highest percentage of the population participating in a physical activity will win.

Residents can do their 15 minutes exercise by themselves or join the second annual Milton Mile. Starting at the town hall parking lot, the event will be a walk, run, skip, or hop along Main Street to Milton Mall.

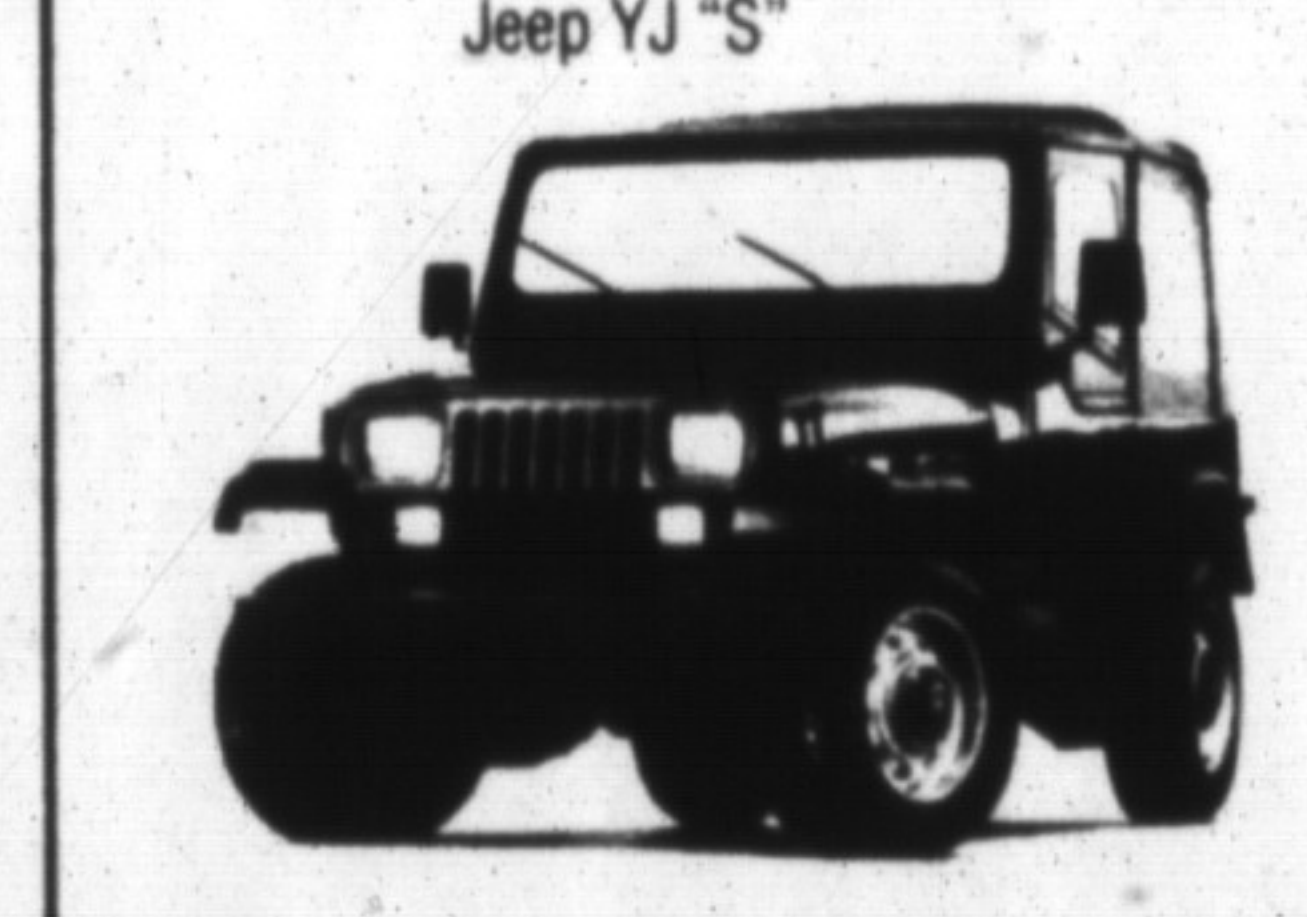
Balloons, clowns and prizes will all be included in the event. Look for further details on the Participaction Challenge in *The Champion*.



1990 Jeep® Cherokee Laredo gets you to those remote areas in style!

- ✓ shift-on-the-fly 4WD
- ✓ air conditioning
- ✓ 4.0 litre engine
- ✓ 5-speed transmission
- ✓ AM/FM E.T. cassette stereo
- ✓ room for five adults

PLUS \$1,000 GUARANTEED REBATE or 9.9% FINANCING****



Jeep YJ affords you the chance to go where the roads don't!

- ✓ shift-on-the-fly 4WD
- ✓ 2.5 litre, 4-cylinder engine, the most powerful standard engine in its class
- ✓ classic open-air design
- ✓ 7-year, 115,000 kilometre powertrain warranty†

\$12,750 or less*

* Advertised price is for base model Cherokee Laredo and YJ "S" and does not include transportation, license, taxes and registration. Factory dealer may be necessary. **Guaranteed period expires September 30, 1990 and applies to 1990 models only. These offers are mutually exclusive and apply to purchase for personal use only. †Qualified buyers choosing a reduced financing rate in lieu of cash rebate are eligible for 9.9% financing over a maximum 24 month term. Restrictions are subject to Chrysler Credit Canada Ltd. approval on purchase and delivery from Dealer inventory of participating Chrysler Canada Ltd. Dealers from April 2, 1990 until such time as permitted by Chrysler Canada Ltd. Financing offers apply to 1989 and 1990 Jeep Cherokee vehicles and exclude fleet orders and retail lease vehicles. The offers cannot be combined and all previous offers and may not be combined. Example: if the amount financed is \$10,000 on the purchase of an eligible vehicle for a term of 24 months, the financing rate would be 9.9% APR with a monthly payment of \$490.99. Total cost of borrowing is \$1,963.76. Total amount to be repaid is \$11,963.76. Assuming a rebate of \$1,000 as the alternative, should you choose a reduced financing rate instead of cash rebate, you would save \$1,963.76. The cost of borrowing in order to arrive at an effective interest rate, in the example given, the cost of borrowing, including the rebate not taken, would be \$2,963.76 resulting in an effective interest rate of 20.88%. Buyers must pay for transportation, license, insurance and other fees such as registration. Retail lease vehicles are eligible for cash rebates only. Special leasing rates, as an alternative to rebates, are available on selected models. See Dealer for details. † See Dealer for details.

NOBODY COMPETES LIKE YOUR JEEP AND EAGLE DEALER

Jeep and Eagle Dealers of Ontario

Milton Jeep/Eagle
81 Ontario Street, Milton, Ontario
878-8877 Sales
878-8808 Service
842-2544 Toronto Line

Jeep Eagle