

# BEST HOMES

ALSO REACHING MISSISSAUGA, OAKVILLE, BURLINGTON, GUELPH & CAMBRIDGE

The Canadian Champion

Milton, Ontario

May 16, 1990



### TANGIBLE ASSETS

Combine your investments with luxurious country living. Large, modern country home on 10 acres close to Oakville, Milton and Mississauga. Vendor must reluctantly sell and has authorized a price reduction to \$699,000.

ROYAL CITY REALTY LTD.  
ROSS RUNNALLS 876-1156

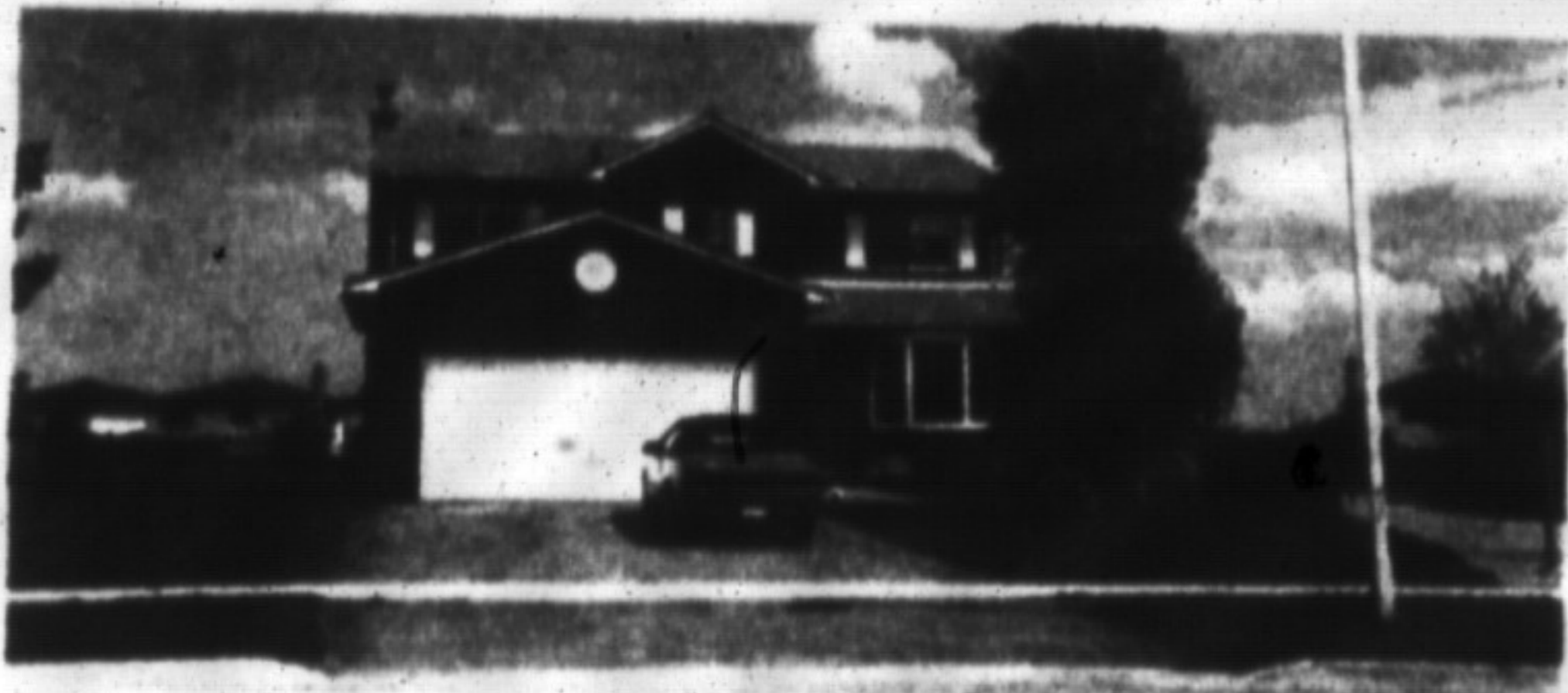
REDUCED! \$369,000.



### RESIDENCE OF DIGNITY!

\*4 bedroom split-level home, \* oversized double garage \* 1.25 acres of treed property \* Fireplace, water softener. Main floor laundry \* Attractive pine trim & rail. Call or visit us for info!!

ROYAL CITY REALTY LTD.  
MIKE MANGOTICH 876-1156



### 730 ROBERTSON CRESCENT—EXECUTIVE

4 bedrooms, 3 bathrooms, stone fireplace, main floor family room, main floor laundry, on a large lot.

CHRISTIE & WOODS REAL ESTATE LTD.  
TIM NEVINS 878-2095



### LOVE AT FIRST SIGHT!

You'll fall in love with this picturesque home set among the trees of Carlisle. Sit on your patio and watch the chipmunks scurry around while you enjoy the breeze blowing through the trees. Brand new with all the features you desire, this home awaits a new owner. Price \$395,000.00.

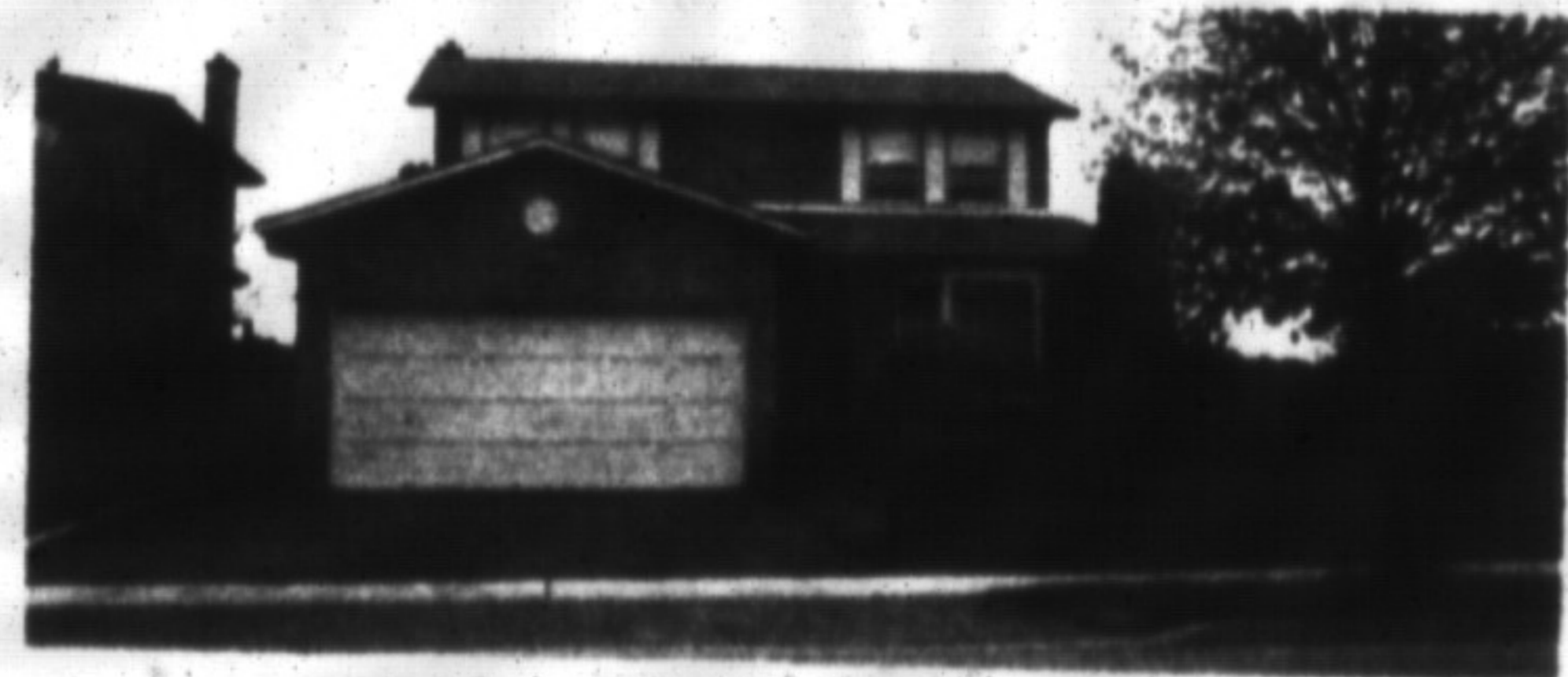
NRS MILLPOND REALTY INC.  
BARBARA MALLALIEU 875-2677



### A NATURAL WAY TO LIVE!

The beauty of wood has made this 2 storey home a dream to live in. Nestled on a professionally landscaped lot in Eden Mills with woods and ravine behind and on one side. An outstanding value at \$255,000. Please call.

ROYAL LEPAGE REAL ESTATE SERVICES  
PAULA RASMUSSEN 878-8101



### ALL THIS CAN BE YOURS!

Besides style and charm this home has 4 bedrooms, double garage with automatic opener, heat pump, air cleaner, garborator, main floor family room with fireplace. Large lot enclosed with wrought iron fencing. To view please call.

CENTURY 21 GOLDEN REAL ESTATE  
RON TWISS 878-8495



### TIMBERLEA GEM ON QUIET COURT \$214,900.

This immaculate 3 bedroom home features lots of living area including: main level laundry and family room with fireplace (+ gas insert) and walkout to patio, spacious living and dining room, airy and bright eat-in kitchen. Open House, Sunday, May 20th, 12-3 p.m.

REMAX MILTOWNE REALTY CORPORATION  
LINA & WAYNE WARNER 878-2365



### "IT'S YOUR MOVE" \$120,000 MORTGAGE AT 12%

This centrally located 3 bedroom townhouse is close to all amenities, nice size kitchen which includes, stove and built-in dishwasher, separate dining room, new flooring, family room has fireplace and patio doors leading to fenced yard. \$156,800. There's more, please call!

REMAX MILTOWNE REALTY CORPORATION  
SANDRA A. BAILEY 878-2365