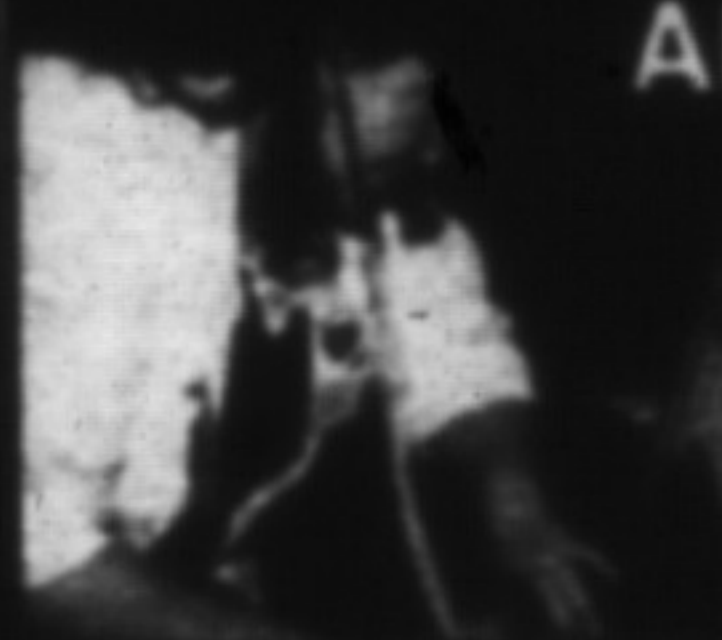




GUIDE

Inside today,
a community
guide to
keep all year



ALL'S WELL

Pressure is
on to promote
wellness
— LS1

Ont. Community Newspaper
Box 451
OAKVILLE, Ontario C
L6J 5A8

7
5
7

The Champion

Wednesday edition

A Metroland Community Newspaper
serving the town of Milton

10.9%
financing on Selected
Models - Full Size Pickups.
RICHARDSON
Chevrolet Oldsmobile
May 25 at Derry 878-2393

VOLUME 131, NUMBER 42

MILTON, ONTARIO, WEDNESDAY MAY 16, 1990

40 CENTS

56 PAGES

GST won't be stalled: Jelinek

By NORMAN NELSON

There are only two things certain in life — death and apparently the Goods and Services Tax (GST).

National Revenue Minister Otto Jelinek, explaining and defending the controversial new tax in his home riding of Oakville-Milton on Thursday, assured a group of about 60 business people that the tax,



Otto Jelinek

scheduled to come into effect at the beginning of next year, will not be held up by the Liberal-dominated Senate.

One option his government could consider in pushing it through, he said, would be to create a Tory majority by enlarging the Senate and filling vacancies with the party faithful. "It's been done before."

Any delay in implementing the GST, he said, will cost government and the business community, which has already initiated extensive preparations, "tens of millions of dollars."

He said it would also mean nine million low and moderate income Canadians, including the 75 per cent of senior citizens slated to get rebates to cushion the impact of the GST, would miss the first instalment this December.

He warned the Senate "not to play politics on the backs of Canadians."

The GST, which slaps a seven per cent tax on most goods and services in the country, is designed to replace the present system, which adds a much higher 13.5 per cent rate to a much narrower range of manufactured goods.

Spreading the burden

Although the government says it will end up with basically the same amount of tax money in the end, Mr. Jelinek said the burden is being more evenly spread out over 1.6 million businesses rather than the present 75,000 manufacturers.

Items that will escape the new tax include basic groceries, prescription drugs and medical devices and most farm produce.

While conceding the cost of many goods and services will go up when the GST takes effect, he stressed that

— see GST on page 4



Ready to race

Wheelchair athletes were among the field of competitors at Bishop Reding Roman Catholic Secondary School on Saturday for the 1990 South Central Games for the Physically Disabled. Ryan Laworthy of Milton prepares for a wheelchair race as his father Mike Laworthy (right) and Derek Collins look on. Other events included blind athletes, amputee athletes and cerebral palsy competitors. Milton's Timmy, Mathew Willoughby cut the ribbon to open the games with marathon swimmer Vicki Keith at his side. See more on page 21.

Off 401

Lake, 60-foot fountain part of splashy new town entrance

By ROB KELLY

A lake featuring a 60-foot jet of water climbing out of a fountain will grace the major entrance to Milton by autumn, say the land developers who will pay for the project.

According to a spokesperson for High Point Development, Campbell Thompson, the 13-acre park will cost \$1.3 million.

It will be located on the northeast corner of the Highway 401-Highway 25 interchange. Trees and shrubbery of various types will outline the seven to eight acre lake which feeds the fountain.

Landscape architecture firm Ferris, McCluskey, Quinn and Associates will also design a rock outcropping shouldering the word 'Milton' in four-foot letters with a bronze appearance.

Both the sign and the fountain will be illuminated. Walking trails will twine through the park.

Although councillors at Monday night's general committee meeting embraced the project, there was one reservation, concerning the substantial maintenance anticipated for the fountain when it, as per the proposed agreement, becomes a town responsibility four years hence.

In response to a query from councillor Brian Penman, town planner Anne Bouck said that when maintenance falls to the town from High Point in four years, the fountain will be due for an overhaul estimated to cost \$50,000.

Should it have to be replaced for some reason, that will cost \$120,000, she added. That's why Ms Bouck, in her report to council, suggested the town "reserve judgment on whether to accept the fountain."

Mr. Penman said given that an overhaul will cost "50 big ones" a special reserve fund for that purpose will probably have to be created.

Town administrator Roy Main noted that the fountain and park will be maintained by the developers "gratis" for four years.

Following that "if we like it, we may very well want it. It may very well be significant enough that it becomes a landmark for Milton."

Councillor Brad Clements enthusiastically endorsed the landscaping.

He pointed out that other municipalities had done landscaping projects near their Highway 401 junctions but, "I don't think any of them will compare. The developers have dressed it up, an area which everyone will admit is the pits."

Paul Ferris, a representative of the landscaping firm, said his company will take measures to ensure the pond does not degenerate into an unsightly bog during even drought conditions by either tapping nearby springs or drilling a well.