



Ed Proveau*



Karen Irvine*



Paula Rasmussen*



Les Bunker*



Barbara Lafleche*



IMPRESSIVE TUDOR - \$575,000
Open and bright home with separate dining room and living room. Pretty view from window of centre-isle kitchen. Library and family room have fireplaces. Finished rec room with wet bar. Approx. 2 acres call * D. Lawrence or D. Kerslake 878-8101.



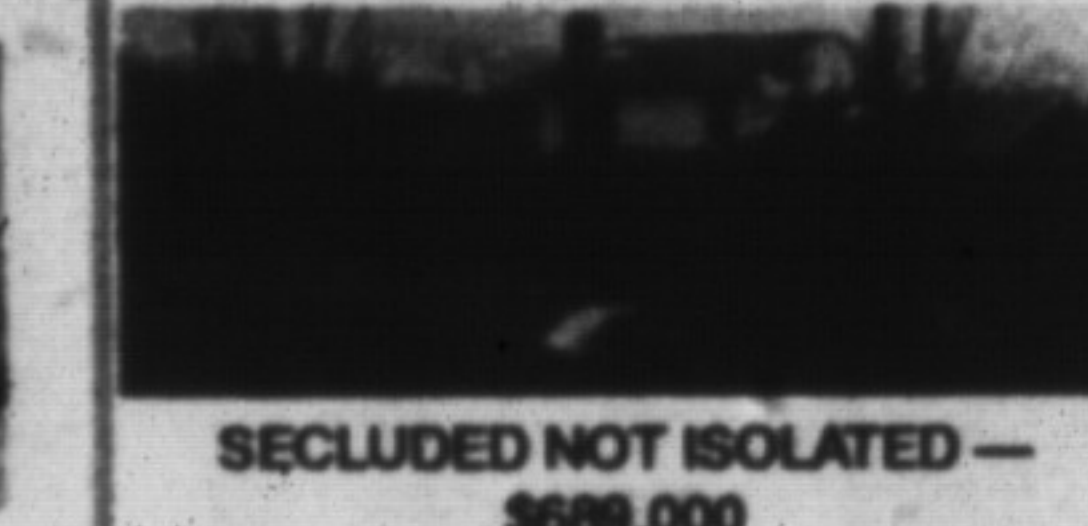
TIME TO BUILD!
On one of three lots with your house plans or choose one of our builder's plans. Model shown is \$395,000 or purchase lot alone. Creative financing available. Call * D. Lawrence or D. Kerslake 878-8101.



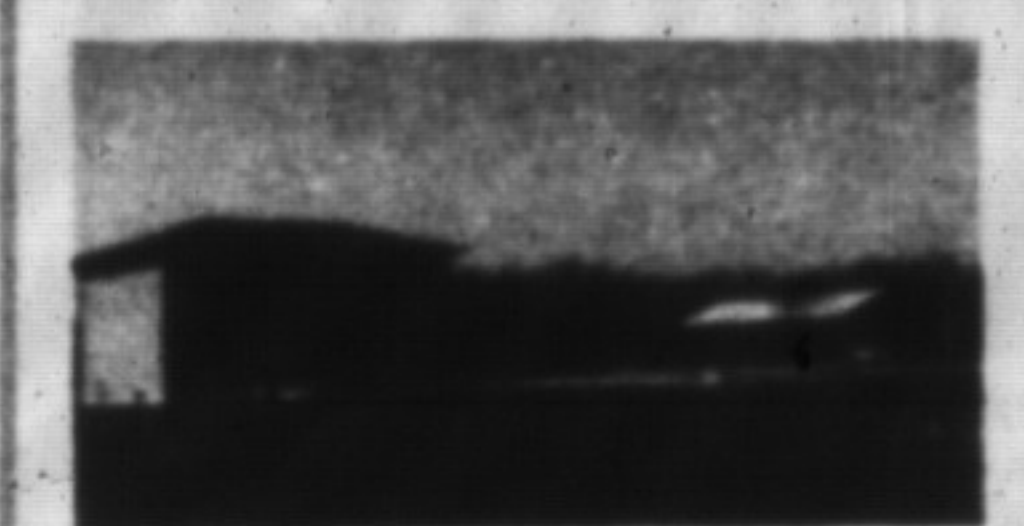
STARTER HOME - EXCELLENT LOT
Two bedroom home situated on well-treed lot in picturesque village. Large double garage and spring-fed pond \$198,900. Call * D. Lawrence or D. Kerslake 878-8101.



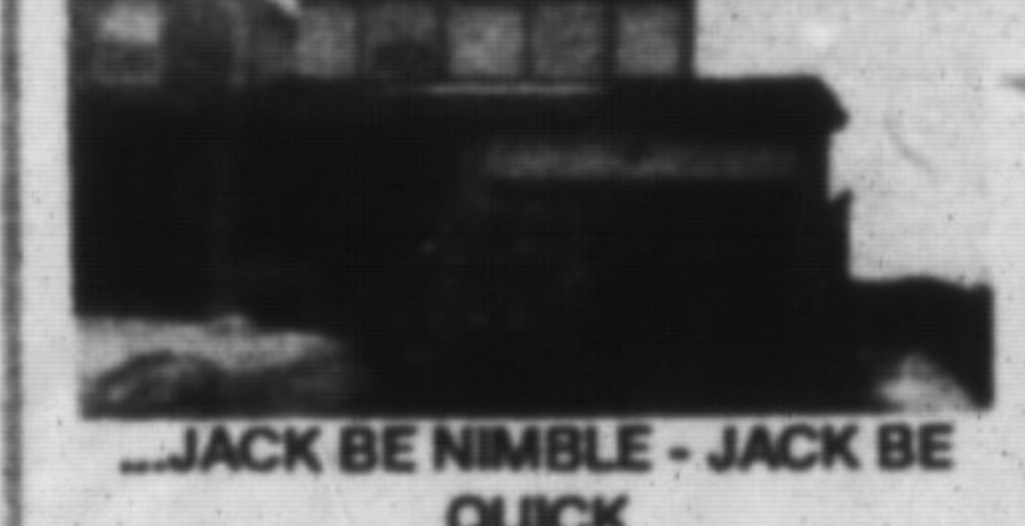
PRICE REDUCTION
Custom built three level home located north of Campbellville now offered at \$1,298,000. Excellent view of countryside from most windows. Separate dining room and formal living room. Call * D. Kerslake or D. Lawrence 878-8101.



SECLUDED NOT ISOLATED — \$688,000
Hard to resist approx. 20 acre property offering park-like setting but within 35 minutes of Pearson airport. Close to Kelso Conservation area for hiking, swimming and canoeing. Spotless and bright home and loafing barn. No need to travel north. * D. Lawrence or D. Kerslake.



52 ACRES SOUTH OF MILTON
\$2,950,000 Plus large 60' x 32' shed with solid concrete floor and 200 amp service. Well-built almost new 4 bedroom brick home with greenhouse kitchen, oversized garage and 3 baths. Call * D. Lawrence or D. Kerslake 878-8101.



...JACK BE NIMBLE - JACK BE QUICK
Drastically reduced to \$220,000. 3 bedrooms, additional completely finished in-law apartment 2 sets of appliances, plus all window coverings included and more. Move in August the first. One of the best buys in town, close to school and shopping. Contact * Rudy Arbetter 878-8101.



MAKE YOUR MOVE - \$278,900
Pride of ownership evident. Beautifully decorated 4 bedroom home boasts central air, inground pool, flowering shrubs for seasonal enjoyment, aluminum soffits and fascia. To view please call * Brenda Johnson 878-8101.



SPECTACULAR SETTING! 19 ACRES \$659,000
This 5 bedroom home perched on the brow of the escarpment features the best of both worlds. Located only 3 minutes from Milton, you are close to all conveniences but still enjoy privacy and nature's bounty. Call * Sandy Del Papa 878-8101.



MORTGAGE RATES GOING UP! DON'T WORRY!
This home, priced at \$214,900 has an assumable mortgage of \$150,000 at 11 3/4% til '92. Features include quiet cul-de-sac location, large yard, fireplace in rec room, bright eat in kitchen, remodelled bathroom and more. Call today * Sandy Del Papa 878-8101.



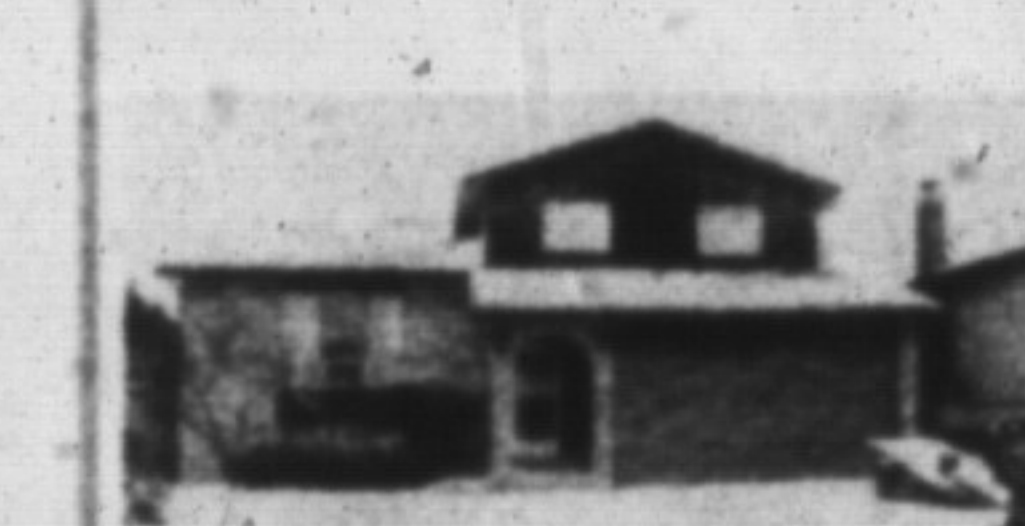
LOCATION PLUS STYLE
Make this 4 bedroom home the perfect choice. Featuring large living room, dining room combination, oak kitchen open to family room, large master with ensuite, new flooring, upgraded brdm. and so much more \$299,900. * Karen Irvine 878-8101.



PICTURE PERFECT \$244,900
Meticulous backsplit on beautiful lot in Timberlea featuring large kitchen with loads of cupboards, spacious family room with fireplace, finish rec room, private patio, double garage. A must to see call * Karen Irvine 878-8101.



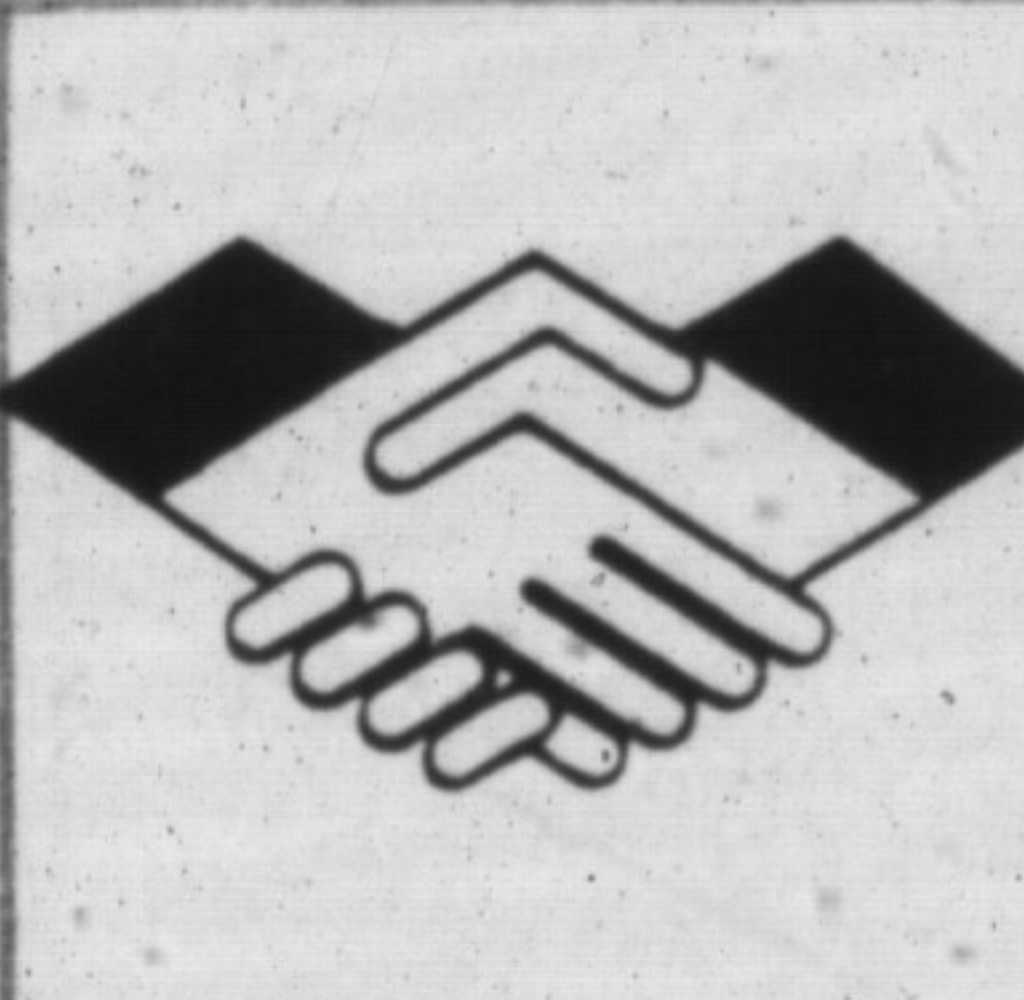
TERRIFIC VALUE! \$229,900
Looks are deceiving from the outside but come inside - 4 bedroom, big, bright kitchen with lots of cupboards, finished rec room, close to all amenities - complete with inground pool. Call * Sandra Logie 878-8101.



FAMILY NEEDED
To occupy this 3+ bedroom home. Large eat in kitchen overlooking the main floor family room with walkout to fenced back - perfect for your little ones. Good value in this property - \$244,900 * Sandra Logie 878-8101.



COUNTRY AT 10 3/4%
Take advantage of a great rate for 2 years and reduced price of \$249,900! This brick rancher with double garage and main floor family room has 3 bathrooms, 2 fireplaces, central air! It's loaded and lovely! * Jean Thomson 878-8101.



Toll Free 1-800-263-4176

It's you that counts the most.

*Sales Representative



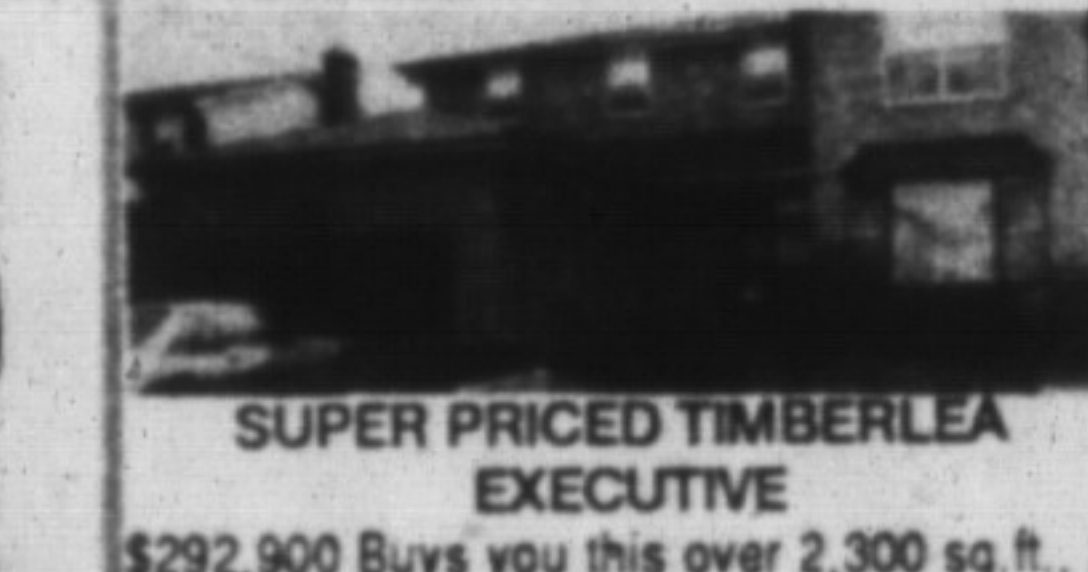
WINNING COMBINATION
Large landscaped lot with a sparkling 4 bedroom home complete with verandah and deck! Enjoy a huge kitchen with walkout, prof. fin. rec room, many extras - truly delightful! * Jean Thomson 878-8101.



REDUCED - SUBMIT OFFER
Immaculate 4 bedroom townhouse backing onto green area and trees. Brand new broadloom upstairs, new triple glaze patio doors, finished rec room, 2 baths and includes 4 appliances - call now * Barbara Crowe - 878-8101.



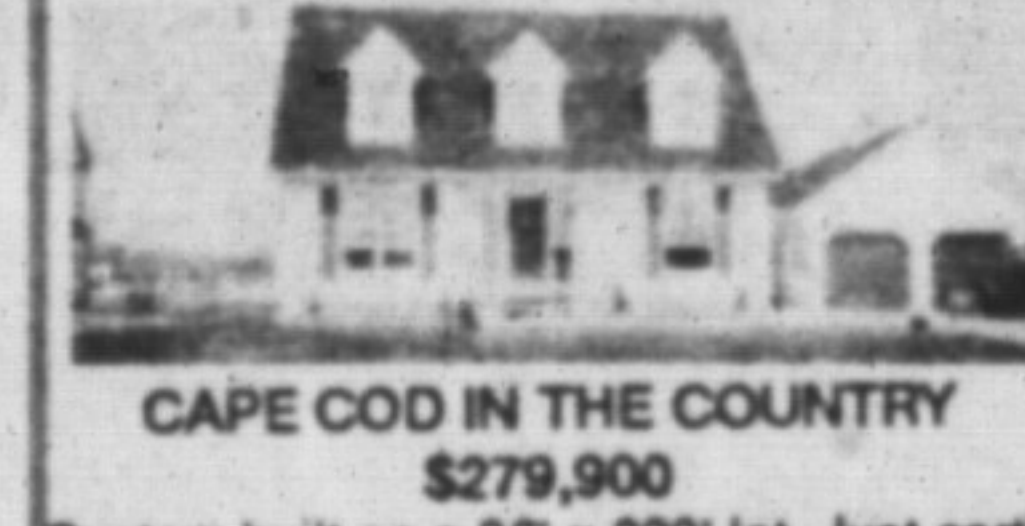
EASY TO LOVE - \$227,900
Clean with neutral decor featuring 3 good sized bedrooms, large bright eat-in kitchen, family room with fireplace, nicely landscaped and situated on an attractive street. Call for details. * Barbara Crowe 878-8101.



SUPER PRICED TIMBERLEA EXECUTIVE
\$292,900 Buys you this over 2,300 sq. ft., 2 storey, 4 bedroom beauty. Close to schools, backs on to parkland offering appliances central air, central vac, spiral staircase, 2 large bay windows, large family room with fireplace and the list goes on call today for your own inspection. * Joyce Hagevik 878-8101.



BEST BUY - HERE'S WHY!! \$259,900
Over 2,600 sq. ft. of finished living space on 4 levels. Well landscaped, 3 decks, above ground pool, air conditioning, 4 bedrooms, family room with fireplace, main floor laundry and 3 baths. inspect, compare make us an offer. * Joyce Hagevik 878-8101.



CAPE COD IN THE COUNTRY \$279,900
Custom built on a 98' x 223' lot. Just north of Carlisle, separate living room, dining room, huge country kitchen, family room combo with fireplace, 3 very spacious bedrooms & 3 baths outstanding windows plus double garage a breezeway and large cement patio. It's worth the drive. * Joyce Hagevik 878-8101.



LET'S ASSUME THE 1ST MORTGAGE
And move into this sweet 3 bedroom bungalow nestled on a gorgeous mature treed 68' x 120' lot. Featuring a large kitchen, single car garage with storage area 24' x 18' sunny deck plus all appliances are included. Reduced to \$185,500. * Joyce Hagevik 878-8101.



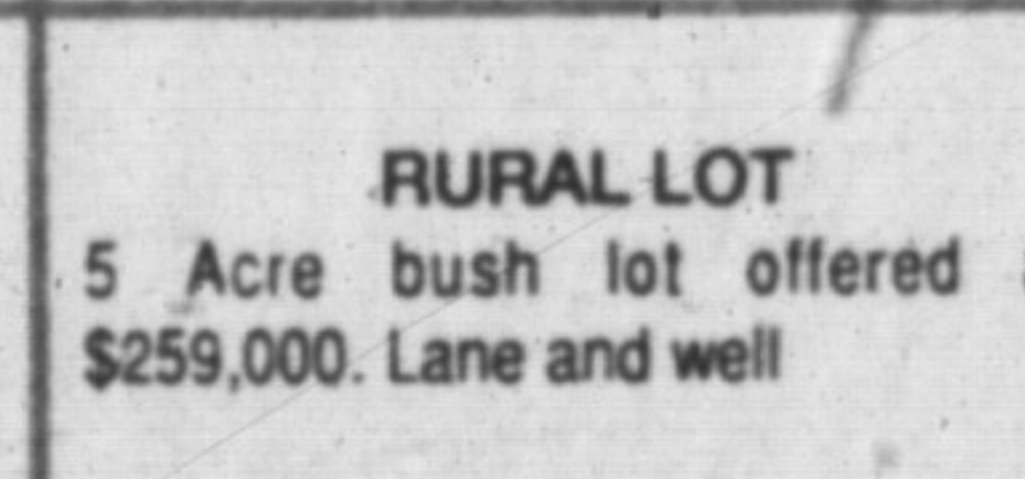
A STATEMENT OF DISTINCTION
This stately brick and stone 2 storey 4 bedroom home commands your attention set on over 4 treed acres high on a hill with a gorgeous view and lots of privacy. Inground pool and first class throughout. Discriminating buyers will appreciate the features this home has to offer. * Joyce Hagevik 878-8101.



A JUMP AHEAD OF THE MARKET \$151,900
4 bedroom townhouse with private backyard backing onto detached single family homes. Patio doors off living room to brand new pressure treated deck, door from garage to basement and more. Call * Barbara Crowe 878-8101.



PRESTIGIOUS RURAL ESTATE LOTS
Magnificent wooded and partly wooded estate lots ranging from 2 to 3 acres. Some with streams, others with a pastoral view. Each lot backing on to 90 acres of beautiful natural woodlands. Priced from \$199,000 to \$275,000. Inge Winther * 878-8101.

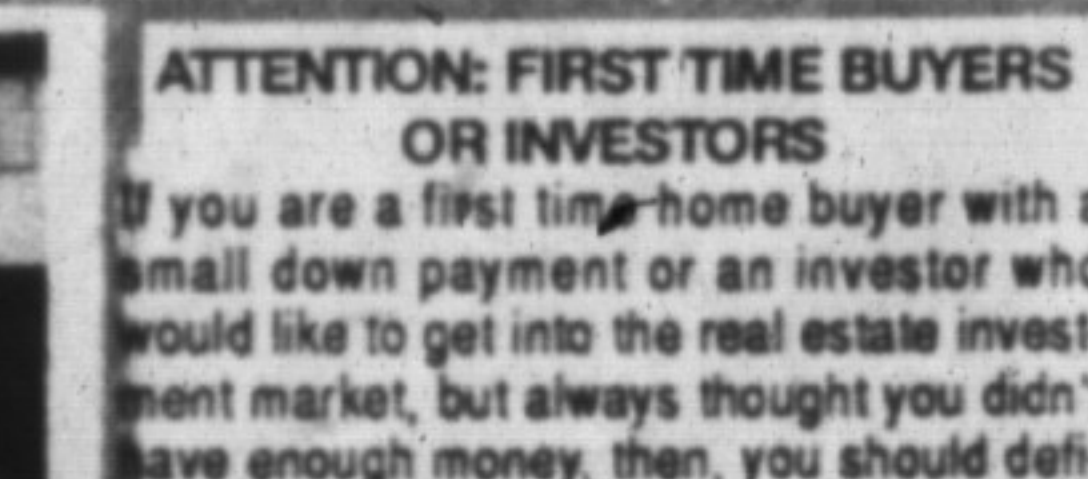


RURAL LOT
5 Acre bush lot offered at \$259,000. Lane and well

COMMERCIAL LOT
Approximately one acre corner lot in village of Moffat. Asking \$199,900. Call * D. Lawrence or D. Kerslake.



JUST LISTED
A townhouse with a difference. 2 storey, finished basement, air conditioned plus a lovely front lawn & very private decked area off kitchen. Drive by 318 Laurier #60 and call to inspect. * Ed or Norma Proveau 878-8101.



ATTENTION: FIRST TIME BUYERS OR INVESTORS
If you are a first time-home buyer with a small down payment or an investor who would like to get into the real estate investment market, but always thought you didn't have enough money, then, you should definitely consider the following: I have 4 townhouses listed with 85% financing available varying from 11 3/4% to 12 3/4%, depending on the unit and location. Priced vary from \$144,900 to \$154,900, and all have three bedrooms and a garage. If you would like more information please call * Sandi Kinsale 878-8101.



Doeman Chow*



Brenda Johnson*



Denzil Lawrence*



Denise Kerslake*



Inge Winther*



Audrea Lear-Costigan*



Margaret Swain*



Sandy Del Papa*