



### Need a Custom Designed Computer System for your business?

Call us first! Our Systems are reliable, economical, and user friendly. Accounting systems, Inventory control, integrated cash register systems, etc. Free consultations.

**JMA CONSULTING**

350 MAIN ST. E. 3RD. FLOOR, MILTON

875-1688

### Heat pump produce coolness, heat

The heat pump has the apparently contradictory abilities to heat your house in winter and cool it in summer.

When it does this successfully it does so with energy efficiency unmatched by a conventional furnace/air conditioner combination.

In the early '70s, when the energy crisis hit, heat pumps surged in popularity. Heat pumps have been expensive to buy, and some of the early models weren't overly reliable. So when the energy crunch let up, somewhat, their popularity surged the other way.

The principle of the heat pump, however, is sound. Instead of burning something, the heat pump uses energy — usually electrical — to run a motor which produces coolness inside your home in the summer, exactly the

way your refrigerator motor does. The refrigerator motor, you'll have noticed, also produces heat. With the refrigerator the coolness is always inside the heat outside.

With a heat pump the process in winter is reversed — heat inside, coolness outside.

Even the highest efficiency conventional furnace wastes a lot of energy in the process of burning a fuel to heat your home. The heat pump motor wastes very little.

Today's heat pumps, such as our Nordic II and III, have established excellent records for reliability. Unless you live in one of the coldest parts of Canada, it advisable to investigate the heat pump alternative.

You get both heating and cooling functions in one. Through the years the energy saving could make the investment well worthwhile.

## CHRISTIE & WOODS

REAL ESTATE LTD.

189 Main Street, Milton 878-2095



**730 ROBERTSON CRES. OPEN HOUSE MAY 13TH 2:00 - 4:00 P.M.**  
4 bedrooms, 3 bathrooms, stone fireplace, main floor family room, main floor laundry, on a large lot. Call Tim Nevins.



**ZONED COMMERCIAL**  
Super location downtown Milton, for professional office space. Owner may finance. For details Call Tim Nevins.

### Build THE HOME OF YOUR DREAMS

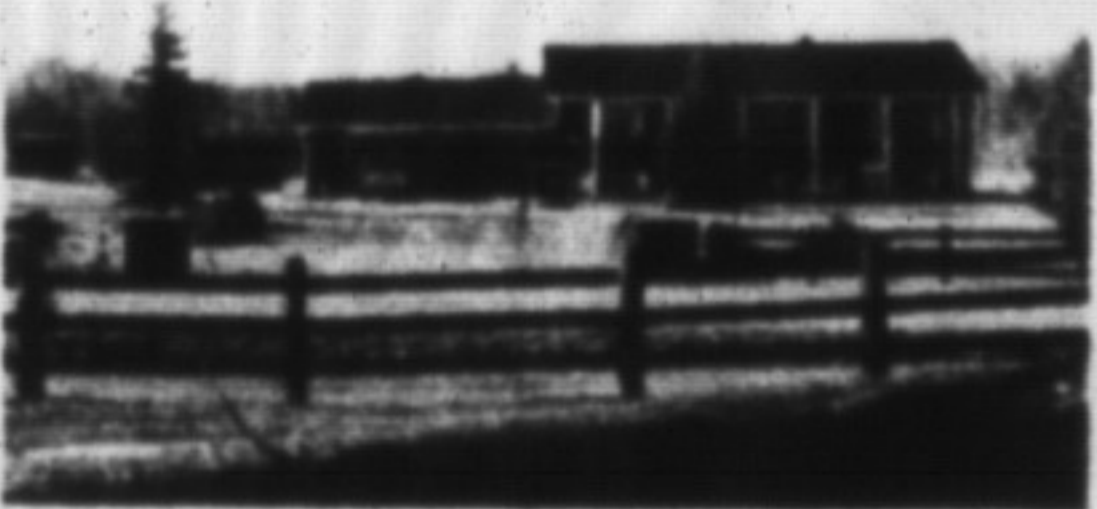
On this scenic 44 acres, easy access to the 401 and Milton. This just may be the property you have been looking for. For all details call Cameron Gall 876-2856.

If you have been considering selling your home or property why not give Cam Gall a call for an up to date market evaluation. It may be your best move yet!



### CENTRAL LOCATION

3 bedroom brick semi-detached plus garage, close to school, transferrable first mortgage to qualified purchaser. Asking \$149,000. To view call Yvonne Christie 878-2095.



### COUNTRY CHARM

Bright living room with fireplace, spacious eat-in kitchen, dining room, 3 bedrooms, main floor and 2 bedrooms down, walkout family room with stone fireplace on lower level. May we tell you more? Call Yvonne Christie now 878-2095.

### FABULOUS MORTGAGE

Vendor take back on this home.



**COUNTRY LIVING ON TOWN WATER LOOK THIS ONE OVER.**  
Call Marg Christie.

Yvonne Christie\* Broker Owner 878-2095

Tim Nevins \* 875-1263 Cameron Gall\* 876-2856  
Allan Christie \* 878-2095 Margaret Christie \* 875-2443

\* Sales Rep.

## CAMBRIDGE PROPERTIES MINUTES FROM THE 401



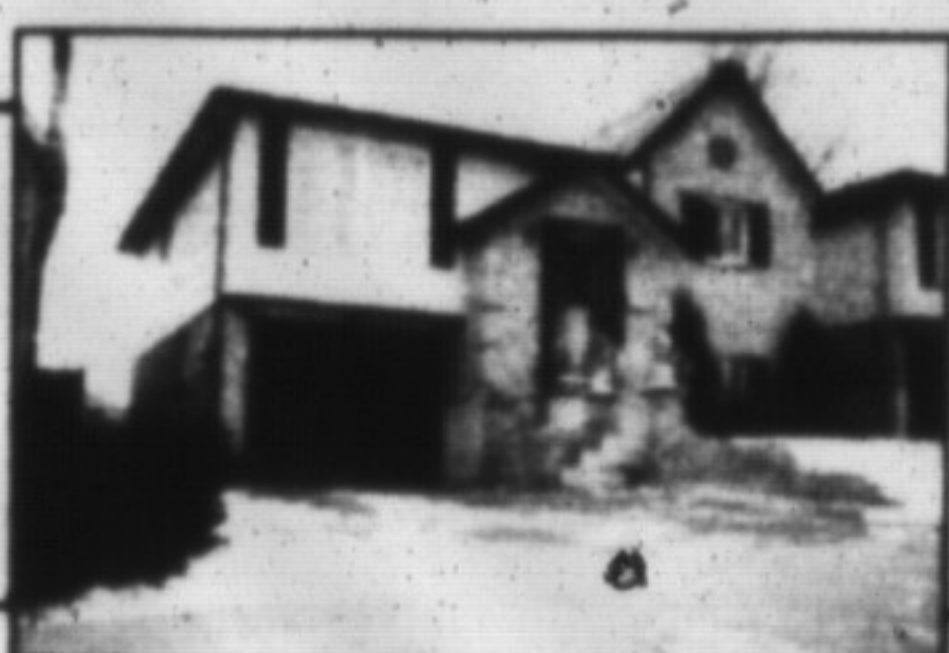
**\$137,900**

One owner home; semi-detached, 3 bedrooms, eat in kitchen, living/dining room, LOT 149 ft. DEEP with fruit trees, strawberries, gardener's delight. MLS 901549



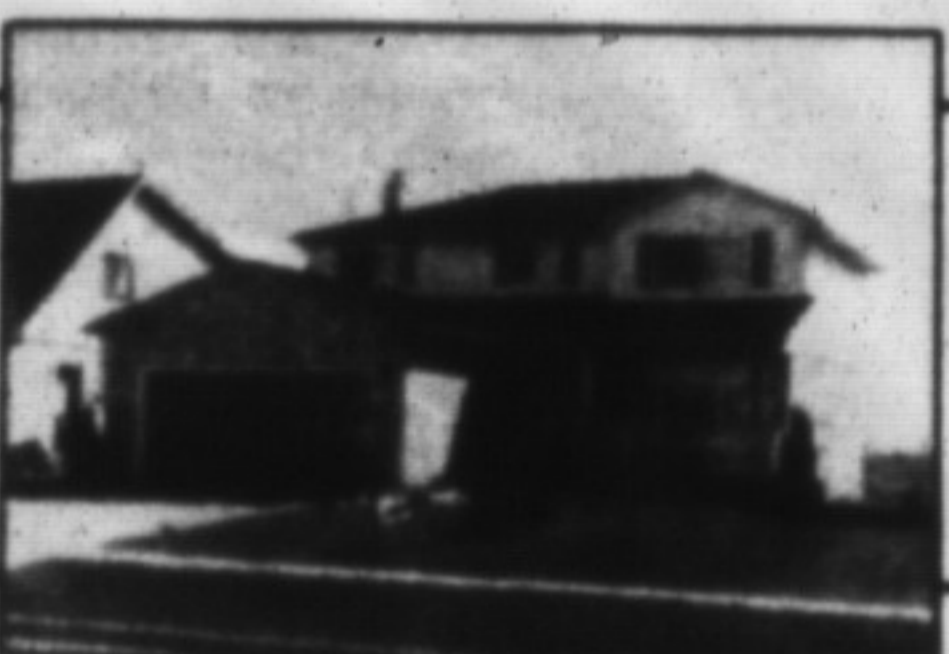
**\$145,900**

Tastefully decorated throughout, 3 bedrooms, finished rec room and 2 pc. bathroom in lower level, deck, interlocking driveway, shed with hydro, fenced backyard. MLS 900961



**\$177,500**

Raised bungalow with many upgrades; 3 bedrooms upstairs, large eat in kitchen, lower level has second kitchen and bathroom, rec room with gas fireplace. "like new" condition. MLS



**\$214,900**

Perfect for family living. Three spacious bedrooms, main floor laundry & family room with fireplace/heatalator, CENTRAL AIR, deck, central vac, only 1 year old. MLS 900963

For any of the above properties call **ALEX OR TRUDY GRIER, 1-519-740-3690, Sales Reps., RE/MAX Golden Triangle Realty**

## FURLONG, COLLINS, MANDERSON & GUNDING

Offices in Milton, Brampton, Halton Hills

878-8123

Your full service Law firm

### MORTGAGE RATES THIS WEEK

| BANKS                  | VARIABLE RATE | 6 MONTHS  | 1 YEAR    | 2 YEARS   | 3 YEARS | 4 YEARS | 5 YEARS |
|------------------------|---------------|-----------|-----------|-----------|---------|---------|---------|
| Cdn. Imperial          | 14 1/2 op     | 14 1/2 op | 14 1/2 op | 14 1/2    | 14 1/2  | 14 1/2  | 14 1/2  |
| Bank of Montreal       | 14 1/2 op     | 14 1/2 op | 14 1/2 op | 14 1/2    | 14 1/2  | 14 1/2  | 14 1/2  |
| Laurentian Bank        | n/a           | 14 1/2 op | 14 1/2 op | 14 1/2    | 14 1/2  | 14 1/2  | 14 1/2  |
| National Bank          | n/a           | 14 1/2 op | 15 1/2 op | 14 1/2    | 14 1/2  | 14 1/2  | 14 1/2  |
| Bank of N. S.          | 14 1/2 op     | 14 1/2 op | 14 1/2 op | 14 1/2    | 14 1/2  | 14 1/2  | 14 1/2  |
| Royal Bank             | 14 1/2 op     | 14 1/2 op | 14 1/2 op | 14 1/2    | 14 1/2  | 14 1/2  | 14 1/2  |
| Toronto-Dominion       | 14 1/2        | 14 1/2    | 14 1/2 op | 14 1/2    | 14 1/2  | 14 1/2  | 14 1/2  |
| <b>TRUST COMPANIES</b> |               |           |           |           |         |         |         |
| Cabot Tr.              | n/a           | 14 1/2 op | 15 op     | 14 1/2    | 14 1/2  | 14 1/2  | 14 1/2  |
| Canada Trust           | 14 1/2 op     | 13 1/2 op | 14 1/2    | 14 1/2    | 14 1/2  | 14 1/2  | 14 1/2  |
| Central-Guaranty Trust | 14 1/2        | 14 1/2 op | 14 1/2 op | 14 1/2    | 14 1/2  | 14 1/2  | 14 1/2  |
| Co-operative Trust     | n/a           | 14 1/2 op | 14 1/2 op | 14 1/2 op | 14 1/2  | 14 1/2  | 14 1/2  |
| General Trust          | n/a           | 14 1/2 op | 15 op     | 14 1/2    | 14 1/2  | 14 1/2  | 14 1/2  |
| Guardian Trust         | 14 1/2        | 13 1/2 op | 13 1/2    | 14        | 14      | 14      | 14      |
| Household Trust        | n/a           | 14 1/2    | 14 1/2    | 14 1/2    | 14      | 14      | 14 1/2  |
| Montreal Trust         | n/a           | 14 1/2 op | 14 1/2 op | 14 1/2    | 14 1/2  | 13 1/2  | 13 1/2  |
| National Trust         | 14 1/2        | 14 1/2    | 14 1/2 op | 14 1/2    | 14 1/2  | 14 1/2  | 14 1/2  |
| Premier Trust          | n/a           |           | 14 1/2 op | 14 1/2    | 14 1/2  | 14 1/2  | 14 1/2  |
| Prenor Trust           | n/a           | 14 op     | 14 1/2 op | 15 1/2 op | 14 1/2  | 14 1/2  | 14 1/2  |
| Royal Trust            | n/a           | 14 1/2 op | 14 1/2 op | 14 1/2    | 14 1/2  | 14 1/2  | 14 1/2  |
| Standard Trust         | n/a           | 14 1/2 op | 14 1/2 op | 14 1/2    | 14 1/2  | n/a     | 14 1/2  |
| Duca Credit Union      | n/a           | 14 1/2    | 14 1/2 op | 14 1/2    | 14 1/2  | 14 1/2  | 14 1/2  |
| Jet Power Credit Union | n/a           | 14 op     | 13 1/2 op | R.O.R.    | R.O.R.  | R.O.R.  | R.O.R.  |

NOTES: \*\* Interest rate charged subject to adjustment during term of mortgage. Please consult institutions for term of years available.  
R.O.R. - Rates on request R/O-Renewals only  
op-Open N/A-Not applicable  
...Not quoting

RATES TAKEN: APRIL 27, 1990

Fiscal agents specialize in... and loan investments, and also supplies free consumer information on these investments. Phone: 844-7700.