

# MOE whittled down tree bylaw, chairman says

A plan to expand Moffat by 15 homes will be judged by a provincial hearing board because of objections raised by a lone opponent to the proposed subdivision.

Halton Region gave its approval on Wednesday to the development and noted that all other parties — including the town of Milton, Halton Agricultural Advisory Committee and the Ministry of Agriculture and Food — had also given approval.

However, regional staff explained that a request for a hearing — even by one individual — must be granted unless deemed to be frivolous.

James Pesando is objecting to the development on the grounds it will adversely impact on his adjacent property, and the decision to expand the hamlet to include the subdivision was done in a haphazard manner.

## Paying the piper

Deciding that it's too easy to spend other people's money, Halton Region has resolved that in future when it makes requests to senior levels of government to initiate programs it will advise on "how the service or program would be paid for."

Burlington Mayor Roly Bird raised the issue, pointing to the irony of the Region complaining about decreasing funding from senior levels of

## Region Briefs

government while at the same time continually firing off requests for increased services that ultimately require increased funding.

## Tree and leaf

Believing an Oakville resident may be illegally cutting trees down on his property, regional council, after debating the issue behind closed doors, decided to pursue the matter before the courts.

During the open portion of the meeting, Regional Chairman Peter Pomeroy accused the Ministry of the Environment of whittling down the Region's tree bylaw to the point of it being "useless."

A neighbouring resident, Paul Farley, in his submission to council, said he learned council was considering a recommendation to drop the matter.

He urged, however, it "should be allowed to go before a judge for a decision. To do otherwise is to clearly send a message that the wanton destruction of significant environmental areas is acceptable in this region..."

"Surely in 1990, Earth Day and Arbor Day have more meaning than a photo opportunity for politicians. When we sit back and allow things like this to happen without (sic) hardly a wimper, what is the significance of using unbleached recycled paper to send out messages encouraging the people... to respect

the environment? Let's show some real leadership."

## Wood recycler

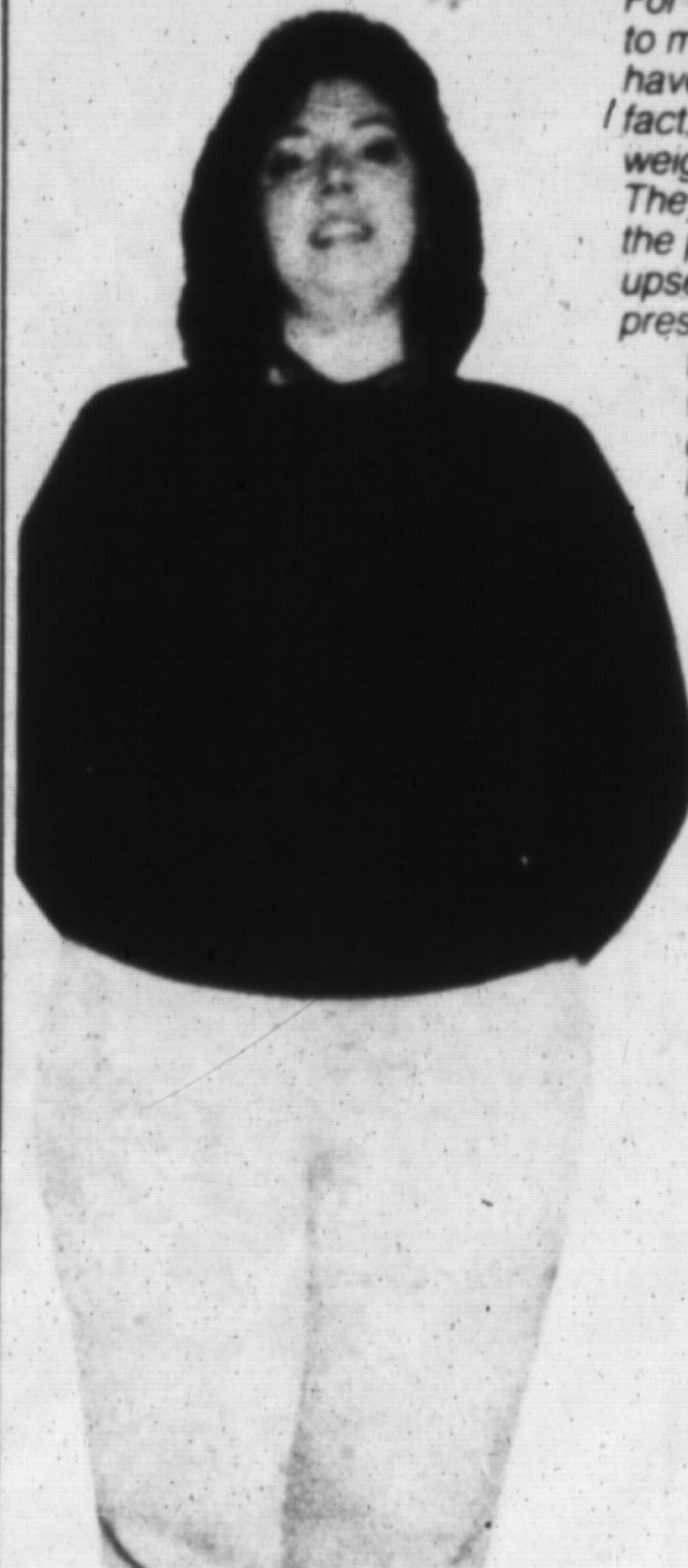
An Orillia company seeking to open a wood recycling facility in Halton has received the backing of regional council, which decided not to request a hearing under the En-

vironmental Protection Act.

F.C. Stewart Recycling Systems says it will be able to handle up to 150 tons of waste wood a day, which it will turn into either mulch or chips for a variety of uses in pressboard and landscape products.

"We will undertake to advise  
• see TILES on page 7

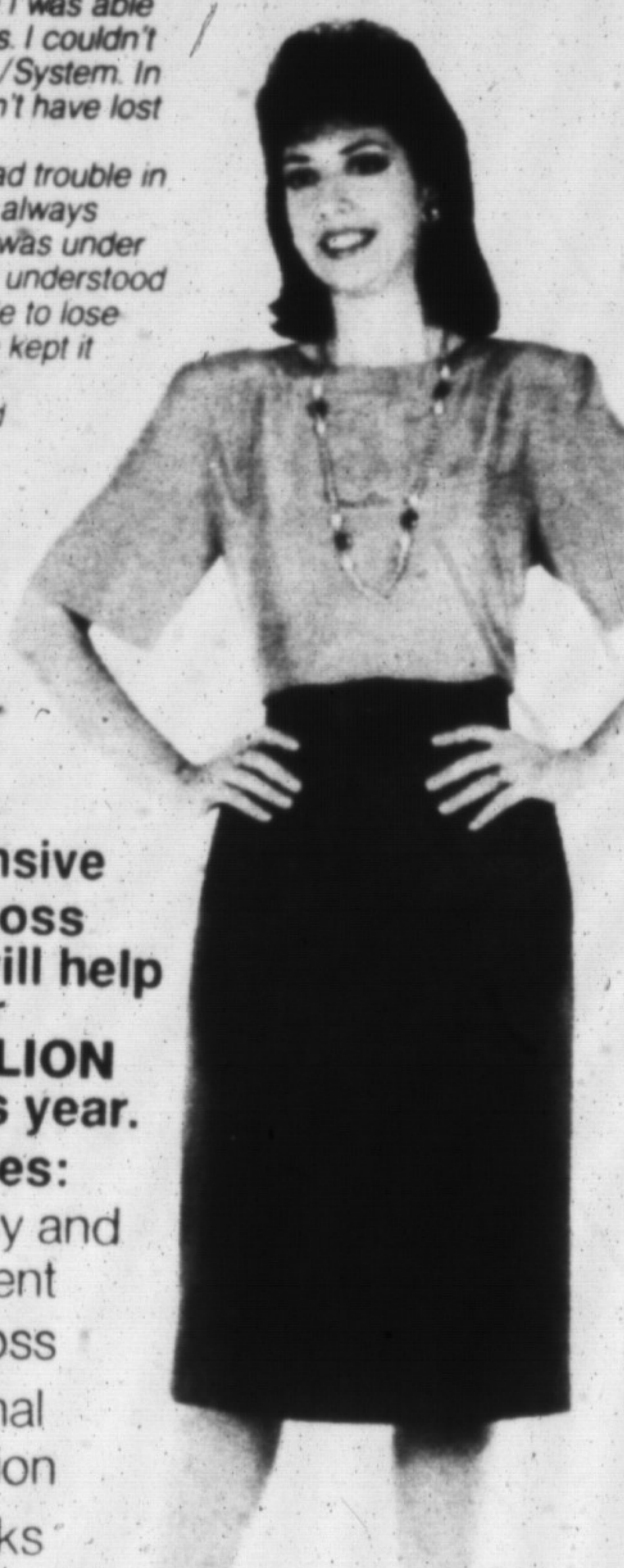
## "With Nutri/System I lost 88 lbs. and maintained it."



"For the first time in my life I was able to maintain my weight loss. I couldn't have done it without Nutri/System. In fact, without them I couldn't have lost weight at all.

They showed me why I had trouble in the past. Social situations always upset me — as soon as I was under pressure, I binged. Once I understood the problem, I was able to lose weight easily. And I've kept it off for 6 months now. Now I'm confident and comfortable around people. I go out all the time. I'm a regular social butterfly."

*Sharon Gehrt*



Our Comprehensive Weight Loss Program will help over ONE MILLION Clients this year.

### It Includes:

- SAFE, easy and permanent weight loss
- professional supervision
- no gimmicks
- no calorie counting

OVER 1,600 CENTRES WORLDWIDE

**nutri/system**  
weight loss centres

Our client, Sharon Gehrt, lost 88 lbs.

OVER 19 YEARS OF WEIGHT LOSS SUCCESS

# SAVE 50%

CALL TODAY FOR A FREE NO-OBLIGATION CONSULTATION

## 878-4117

## 465 Main St.E., Milton

(Across from Milton Mall)

\* Does not include cost of exclusive NutriSystem food. Offer valid at participating centres. New clients only.

Showcase Milton



'90

Countdown....  
2 Weeks  
until Showcase  
May 25-27.

Memorial Arena

Buy Your Tickets Now!

SHOWCASE BEACH PARTY

DANCE

FOR Saturday, May 26th  
\$125<sup>00</sup>/reserved table of 10  
\$15<sup>00</sup>/person

Tickets available at

Milton Chamber of Commerce  
& Coulter Music, Main St.

BEEF ON A BUN DINNER

FOR Friday, May 25th  
\$4<sup>00</sup>/person

TWO BUCK BREAKFAST

FOR Saturday, May 26th  
\$2<sup>00</sup>/person

Tickets available at

Milton Chamber of Commerce  
Bergsma's Paint & Wallpaper

Showcase Milton '90

A Project of the  
Milton Chamber of Commerce

For Information 878-0581 For Tickets