

RE/MAX

Miltowne Realty Corp.

22 Ontario St. South 878-2365



LINA WARNER
Sales Rep

TOWN AND COUNTRY CONNECTION

878-2365
Bus.

878-1084
Home

826-1030
Tor. Line



WAYNE WARNER
Associate Broker



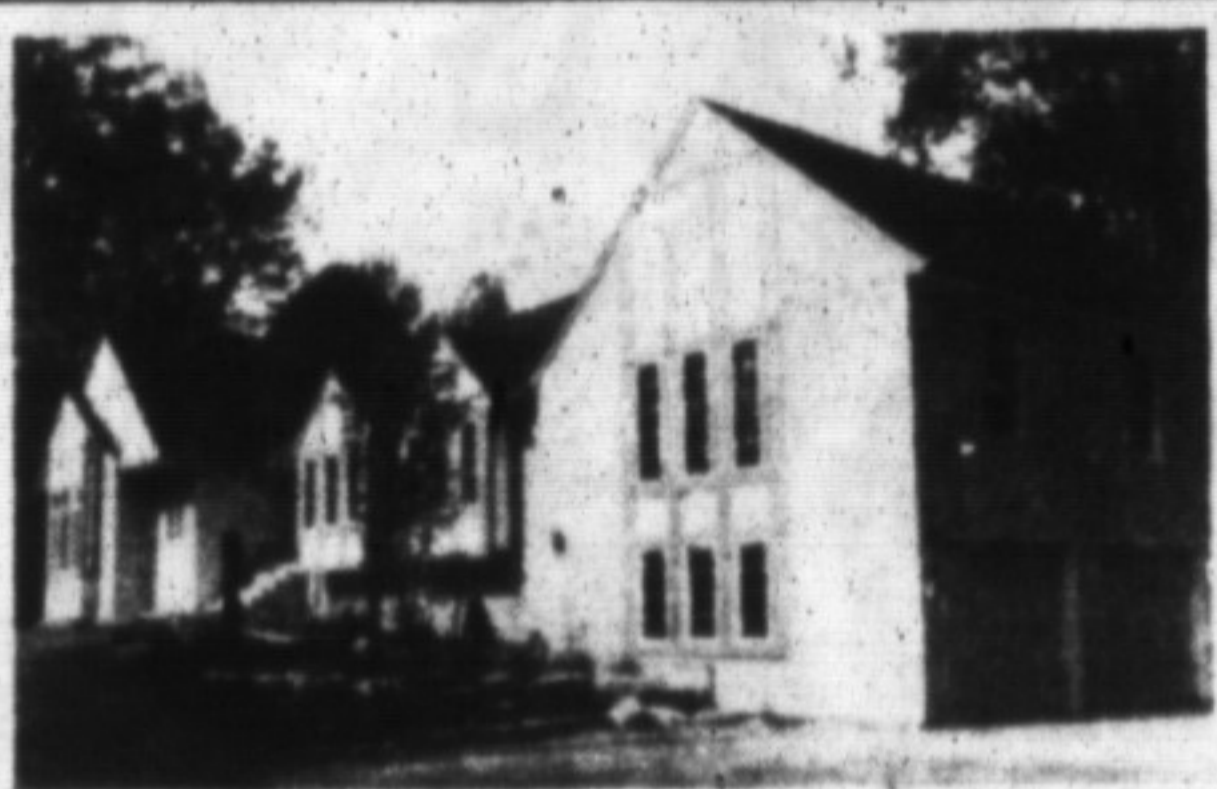
NORTH BURLINGTON COUNTRY WHAT A VIEW!

This lovely bi-level brick bungalow is nestled in 1.6 wooded acres with access to the Bruce Trail. Call Lina or Wayne for more information. \$399,500.



LOVELY RURAL SETTING BUILDING LOT

One acre lot (150' x 300') just a few minutes to town. Survey available. Direct inquiries to Lina or Wayne.



CAMPBELLVILLE COUNTRY 17 ACRES

Incorporates a spacious 4 bedroom raised Tudor bungalow plus 700 sq. ft. studio or nanny's quarters and a triple car garage. The property consists of woods and meadowland making this the ideal retreat or horse operation. \$590,000.



NEAR KILBRIDE "MUSKOKA SETTING" 25.3 ACRES

This architecturally unique home invites the most discerning. Vaulted ceilings, solarium, and skylights are but a few features this home has to offer. \$549,900.



Carole Stonhill
876-4913
Res.
Sales Rep

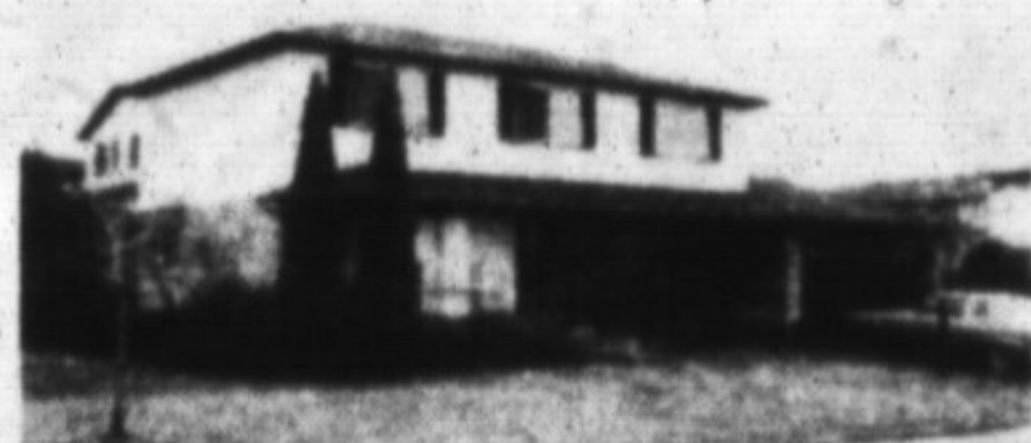
Stella Hall
878-4339
Res.
Sales Rep



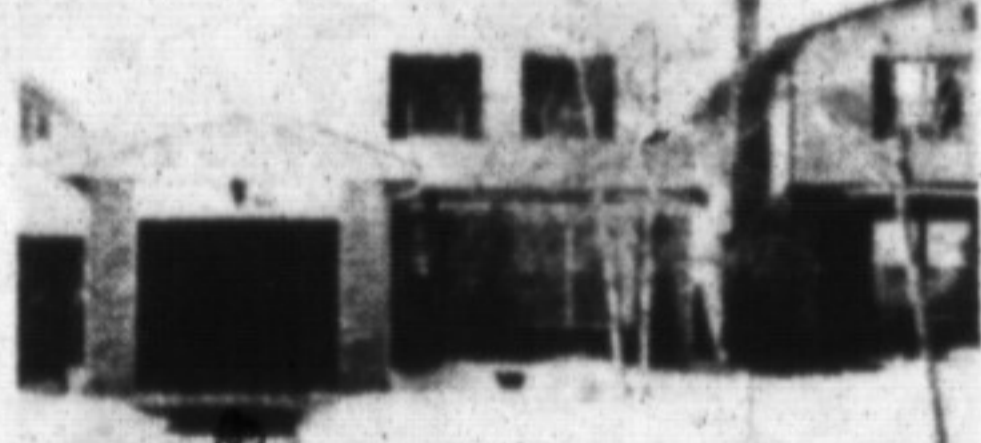
Office: 878-2365
Tor. Line: 826-1030

"There is **VALUE** everywhere you look!!! Drive by these fine homes listed below, and see if your needs fit the picture, then call us on the one you wish to inspect or, if you need directions.

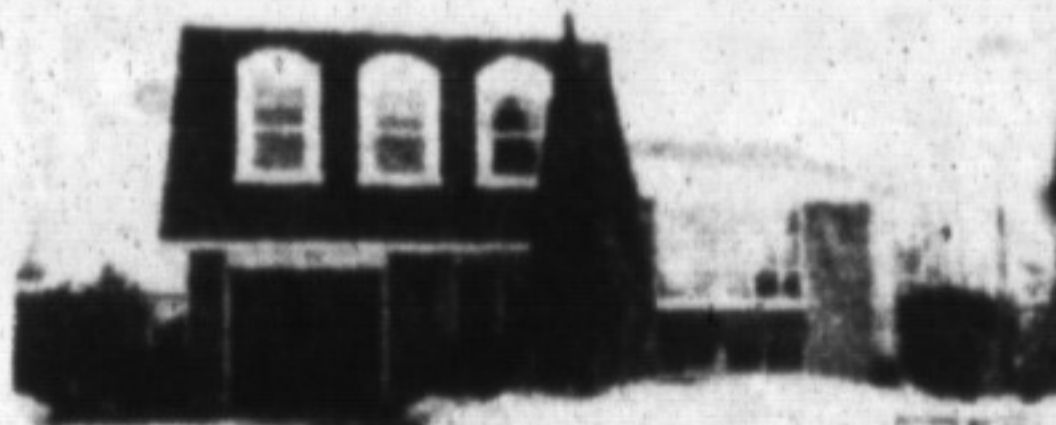
IT DOESN'T COST TO LOOK AND COMPARISON IS OUR BEST SALESMAN



905 CEDARBRAE



766 COULSON



774 FROBISHER



874 PEAREN



712 ROBERTSON



516 SUNNYVALE



445 ONTARIO ST.



30 HESLOR #5



*Above
the
Crowd!*



CAROL BROOKS
Sales Rep

Bus.
878-2365
Res.
875-0067
TOR.
826-1030

TOWN & COUNTRY
SPECIALISTS



ALAN BROOKS
Sales Rep

TOWN - TOWN - TOWN - TOWN

BEST BUY

GREAT LOCATION



584 ROSEHEATH
\$204,900.

3 bedroom, 3 baths, central air conditioning, large eat-in kitchen, new windows, new rec. room with wet bar. Call Carol or Alan Brooks for details.



739 ROSEHEATH
\$212,900.

1600 sq. feet featuring 3 large bedrooms, sep. dining room, family room with fireplace, interlocking brick driveway & patio, and much more. Call Alan or Carol Brooks.

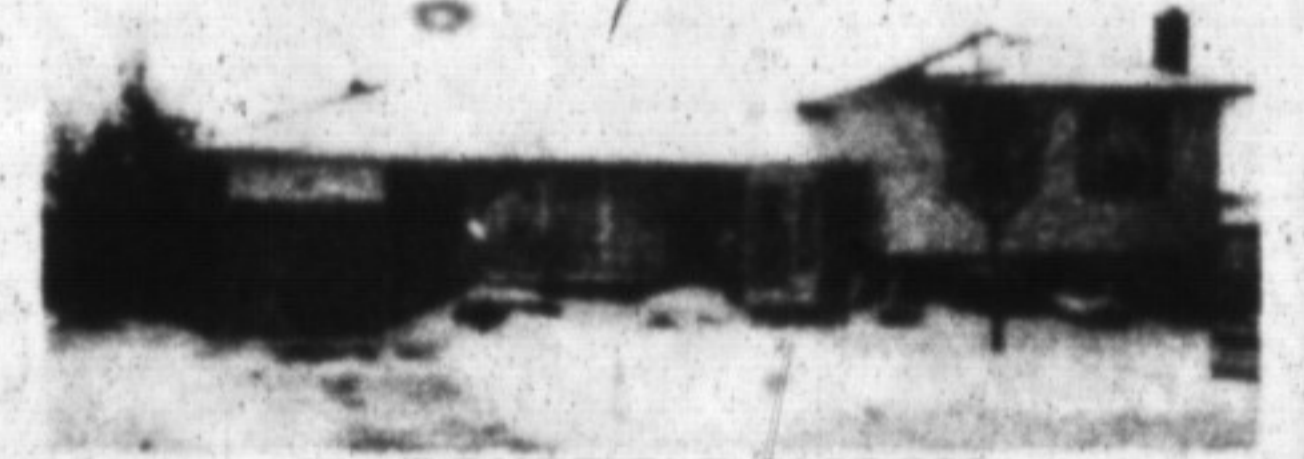
LARGE LOT

DECORATORS DELIGHT



118 LAURIER \$289,900.

This superb family home has everything - 4 bedrooms, large kitchen, family room with fireplace and lots of extra. Call Carol or Alan Brooks for details.



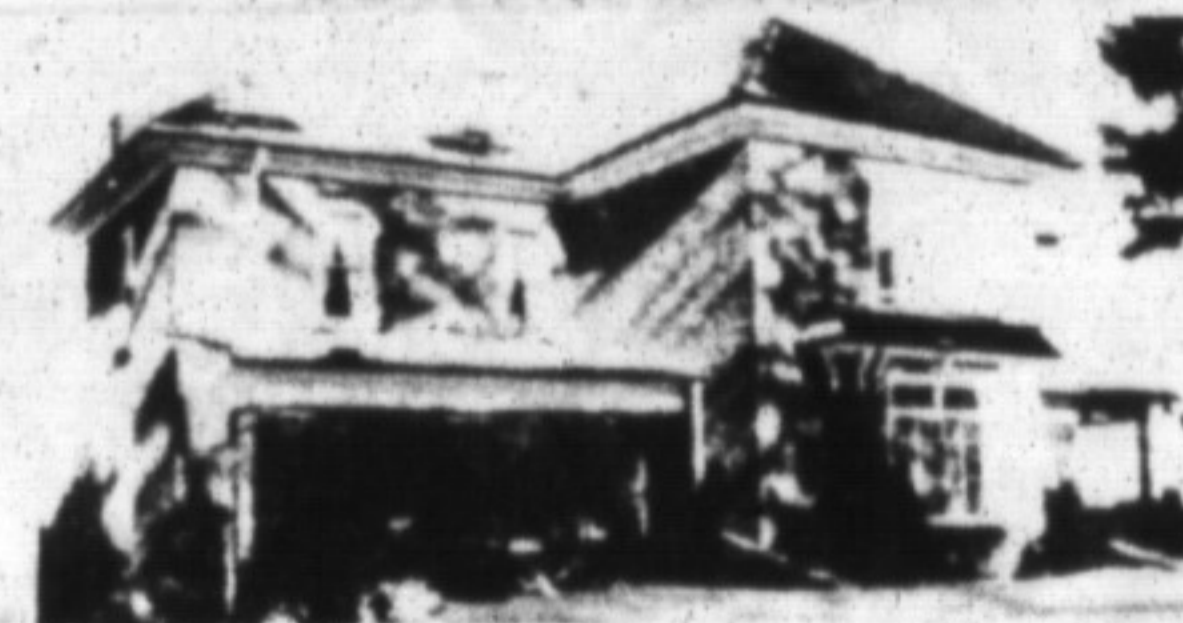
261 BOUSFIELD \$235,900.

The perfect home, 3 bedrooms, beautiful pine kitchen with built-in appliances, family room with fireplace. Don't miss this professionally decorated home. Call Alan or Carol Brooks for details.

COUNTRY - COUNTRY - COUNTRY - COUNTRY

CENTURY STONE

CENTURY STONE



GUELPH LINE \$849,000

Gorgeous stone farm house, completely updated and located on prime eight acres with extensive outbuildings including large barn and a 7,000 sq. "Butler" style building. This versatile property has many uses. Please phone for further information.



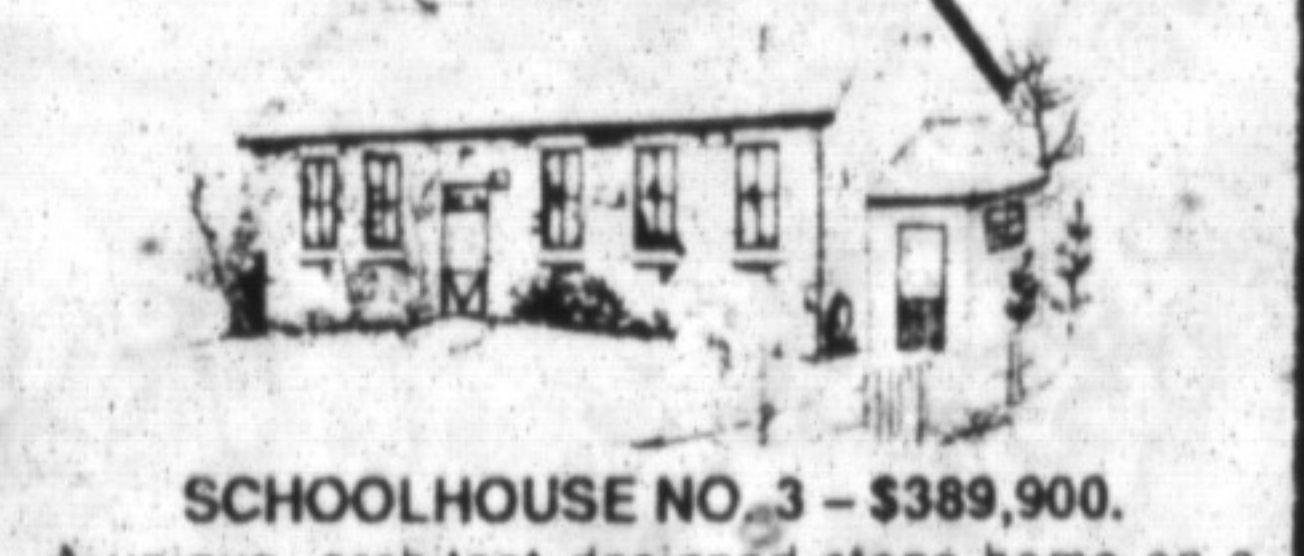
CENTRE ROAD \$549,000.

Fabulous 28-acre, stone house, barn, potential unlimited. Call Carol or Alan Brooks for further details.



GUELPH LINE \$795,000.

A classic country estate - Driveway winds up to a fully restored 1880 stone house located on 10 beautiful acres with a pond, mature trees. Wonderful guest house and a fully restored bank barn. Call Carol Brooks for more details on the unique property.



SCHOOLHOUSE NO. 3 - \$389,900.

A unique, architect-designed stone home on a magnificent tree acre. Features three bedrooms, two baths, a huge central fieldstone fireplace, built-in pine bookshelves and railings, deep window sills, original maple and cherry floors, and authentic "schoolhouse" lighting fixtures. Call Carol Brooks for more details.