

Services Ltd., Realtor



Karen Irvine*



Ed Proveau*



Paula Rasmussen*



Les Bunker*



Barbara Laffeche*

REB—The Canadian Champion, Wednesday, April 11, 1990



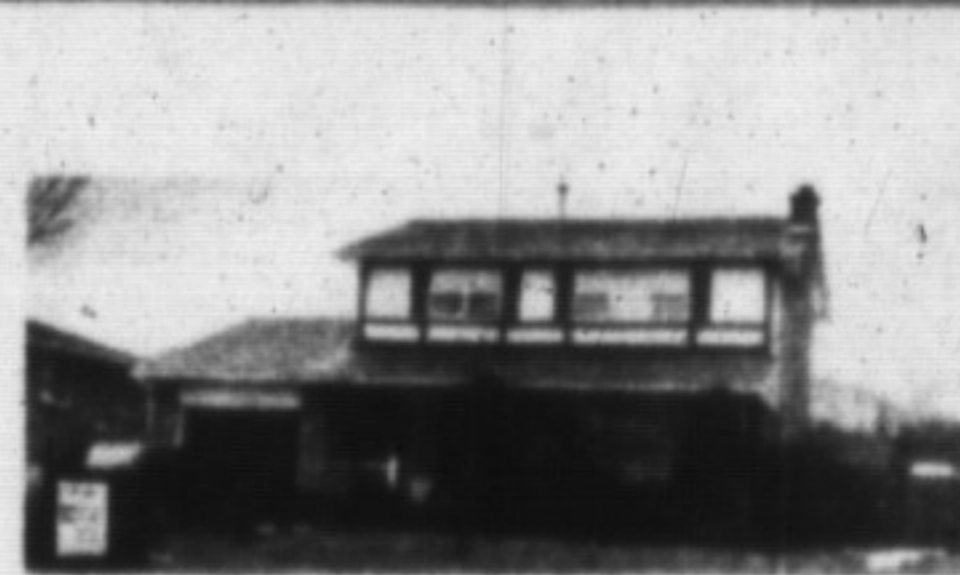
DEFINITE CURB APPEAL \$249,900. This squeaky clean home is on a lovely lot in Timberlea and features large kitchen overlooking family room, finished rec room, 2 baths, double garage, fenced yard with patio and neutral decor. To view call Karen Irvine * 878-8101.



SUPER STARTER \$199,900. This 3 bedroom home has many upgrades and a super large lot. Features include central air, upgraded brdim, large kitchen with walkout to new deck, huge master with semi-ensuite and prof. finished basement. Call Karen Irvine * 878-8101.



COUNTRY RANCHER - \$259,900. Just five minutes north of 401, lovely brick home with main floor family and laundry rooms, 3 baths, 2 fireplaces, super eat-in kitchen, dining room, central air, double garage, in-law suite potential! Call Jean Thomson * 878-8101.



WINNING COMBINATION Delightful 4 bedroom with oak floors, french doors and main floor office or playroom! Prof. finished rec room, custom fireplace, central air, verandah; large deck, super lot! Must be seen. \$249,900. Call Jean Thomson * 878-8101.



FAMILY LIFE THRIVES - \$218,900. In this four bedroom backsplit with large family room, 2 baths, hollywood style eat-in kitchen, nice size yard and close to public and high schools and shopping. Call for details. Barbara Crowe * 878-8101.



TREES TO PLEASE Private one acre surrounds this 3 or 4 bedroom sidesplit with main floor family room and fireplace, eat-in kitchen plus dining room and huge living room, early possession possible. \$299,000. Donna Syms * 878-8101.



COZY COMFORT Extra-large bedrooms, master ensuite, new windows, central air and large fenced lot are special features of this well maintained home. \$205,900. Donna Syms * 878-8101.



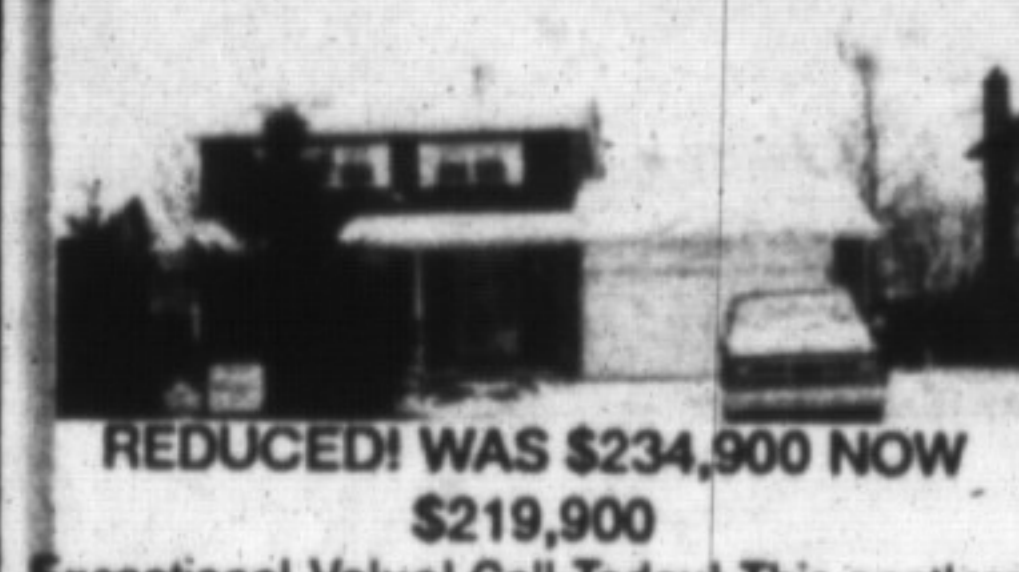
BEAUTIFUL DESIGNER KITCHEN Large modern bungalow on 2 acre lot, 3 bedrooms, 3 bathrooms, main floor family and laundry rooms, formal dining room overlooks trees and pond, huge lower level with walkout and double garage. \$388,000. Call Donna Syms * 878-8101.



1874 CAMPBELLVILLE SCHOOL-HOUSE Built in stone this rare gem has been restored with great care from a one room schoolhouse to 9 rooms and 3,200 sq. ft. of enjoyable living with the original school bell a top and a new 3 car coach house it sits on very private and secluded acre. Inge Winther * 826-9218.



OLD WORLD CHARM Prestigious estate home nestled on 2 1/2 wooded acre. Surrounded by 22 acres of natural woodlands. This atmospheric 5,000 sq. ft. 2 1/2 storey features: 5 bedrooms, 5 baths, 5 fireplaces, large formal rooms. Front and back staircases, sep. maids quarters etc. Inge Winther * 826-9218.



REDUCED! WAS \$234,900 NOW \$219,900 Exceptional Value! Call Today! This spotless 4 bedroom home offers a quiet crt. location and a large yard with extensive wood decking. Extras include leaded glass doors, new flooring, central air, remodelled bathrooms and a mortgage of \$100,000 @ 11% until 1995. Call Sandy Del Papa * 878-8101.



SUPER MORTGAGE! CHECK IT OUT! Priced at \$214,900 this spotless backsplit offers a \$150,000 mortgage at 11 3/4% until 1992. If you enjoy a cozy family home with fireplace in the rec room, huge yard, quiet court location and more - this home is for you. Call Sandy Del Papa * 878-8101.



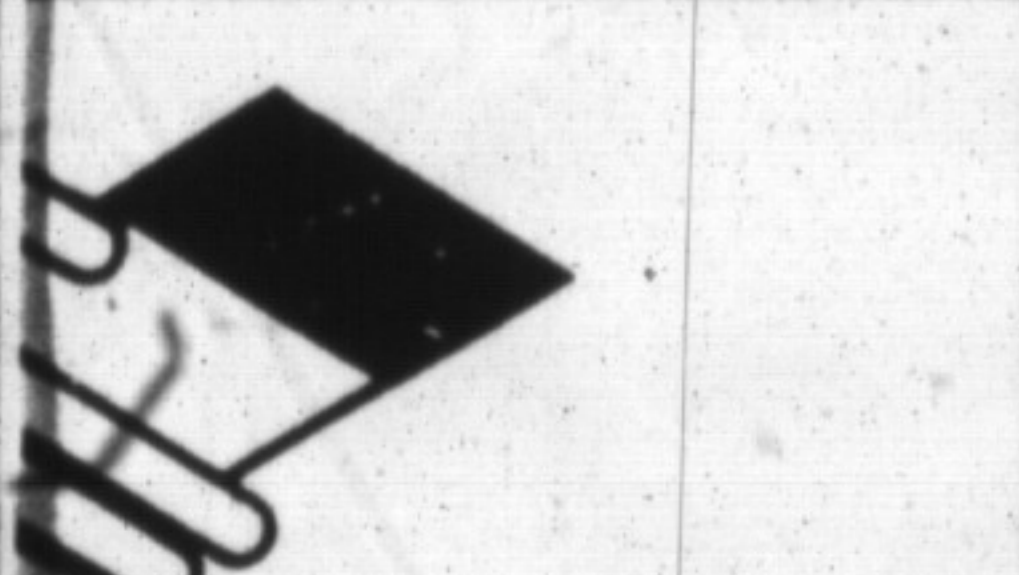
SPECTACULAR SETTING!! 19 ACRES \$659,000 This five bedroom home perched on the brow of the escarpment features the best of both worlds. Located only three minutes from Milton, you are close to all conveniences but still enjoy privacy and nature's bounty. Call Sandy Del papa * 878-8101 or 826-9218 Toronto.



BIG YARD QUIET STREET \$189,900. Ideal starter home for those who want their own space this 3 bedroom bungalow offers large kitchen with sliding doors to 24' x 18' deck, 2 baths, finished basement. Single car garage plus appliances. Lot size 68' x 120'. Joyce Hagevik * 878-8101.



ABUNDANT AMENITIES Perfect for horsemen or anyone who enjoys country living. This inviting rancher features country kitchen, main floor family room, walkout to private deck. Plus 5 stall barn. Call Sandi Kinsale * 878-8101.



ST. EAST

8-9218
0-263-4176

unts the most.

*Sales Representative



READY FOR INSPECTION - \$154,900 3 bedroom townhouse in desirable area "Laurier" complex features res log burning fireplace for those cozy evenings. Private backyard is fully fenced. Call Sandi Kinsale * 878-8101.



REDUCED \$499,900 This professionally decorated 3,400 sq. ft. home comes complete with american style country kitchen with built ins, den, sunken family room with stone fireplace, football field sized rec room in pine, five bedrooms, 4 baths, formal living room and dining room, tennis court set on 2 acres. Joyce Hagevik * 878-8101.



CHARMING BRICK AND STONE ESTATE HOME Set on 4 rolling treed acres. One 1/2 years new. Quality decor, custom made window treatments. Warm woods all enhance the beauty of this home. Elegant fireplace in living room, stone fireplace in family room, fabulous kitchen with built ins, den, guest room, pool & patio area. A home for those who want the west. \$875,000 Joyce Hagevik * 878-8101.



BIG HOME - BIGGER VALUE! \$259,900 Located on quiet crescent in Bronte Meadows. This 5 level sidesplit offers over 2,600 sq. ft. of finished living space. Well landscaped with gardens, decks, and above ground pool. Central air, multi baths, huge kitchen overlooking family room with fireplace. Challenges comparison. Joyce Hagevik * 878-8101.



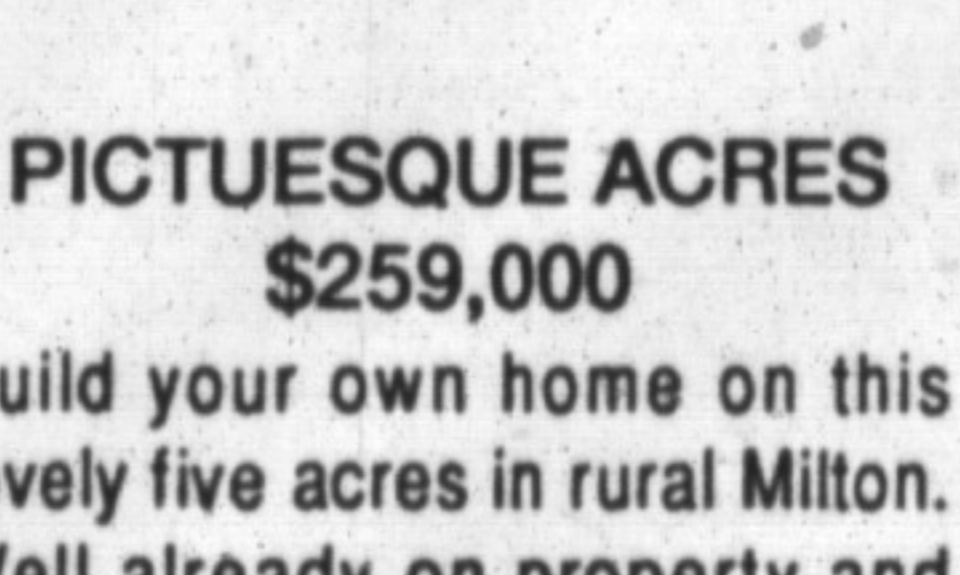
EXECUTIVE HOME Desirable location. Beautifully decorated, 4 bedrooms, main floor family room with fireplace. Spotlessly clean. Go train, schools, parks, shopping. You can have it all! For more information call Virginia Brazeau * 878-1221.



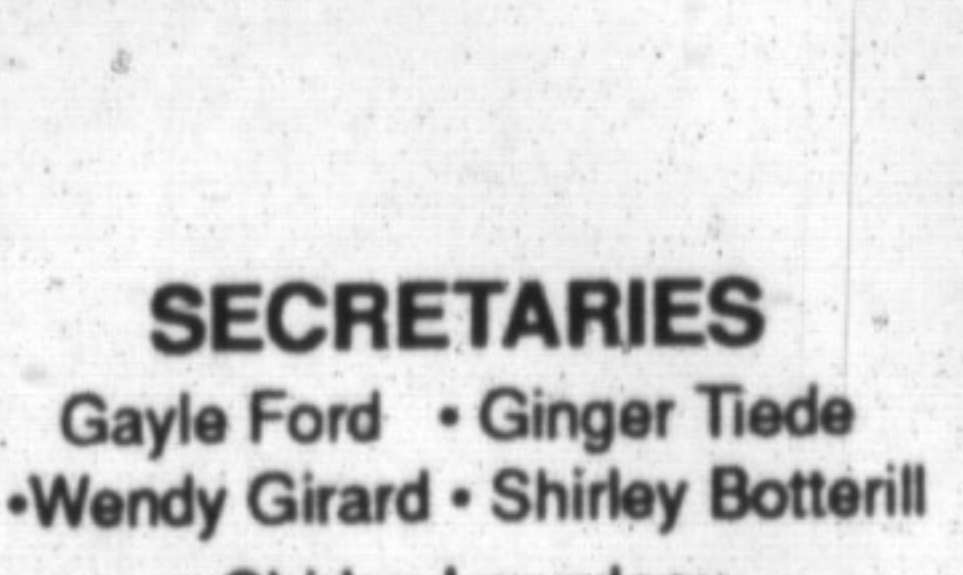
\$249,000 - ON 1/2 ACRE LOT Brick sidesplit features three bedrooms, 2 baths, master bedroom has ensuite, large rec room with fireplace, double car garage. Contact A. Lear-Costigan * 878-8101.



TIMBERLEA EXECUTIVE \$269,900 4 bedroom brick home + 2 car garage features main floor family room with fireplace and walkout. Basement nearly finished just waiting for your finishing touch. This home exceptionally clean. Call Norma or Ed Proveau * 878-8101.



PICTUESQUE ACRES \$259,000 Build your own home on this lovely five acres in rural Milton. Well already on property and building permit available. For information please call Norma or Ed Proveau * 878-8101.



SECRETARIES
Gayle Ford • Ginger Tiede
•Wendy Girard • Shirley Botterill
• Shirley Langdeau



an Chow*



Denise Kerslake*



Brenda Johnson*



Denzil Lawrence*



Inge Winther*



Andrea Lear-Costigan*



Margaret Swain*



Sandy Del Papa*