

A LEADER IN THE INDUSTRY



TIMELESS ELEGANCE...

Take a drive and view with me this 4 bedroom bi-level brick bungalow on the escarpment just 2 miles from Milton. Examine all amenities of this large open floor plan and host of fine features. \$539,900 Rudy Arbeiter * 878-8101 or 878-3558.



OPEN HOUSE APRIL 1, 1990.

YOU MAY MOVE IN JULY 31...

And it has a completely self-contained in-law suite. A unique offer: all appliances, light fix, window coverings included. Many more fine features too numerous to list. For your inspection phone Rudy Arbeiter * 878-8101.



A NICE HOME IN THE COUNTRY.....

Yet just 6 miles west of Milton: 3 bedroom brick bungalow on 1/2 acre, A/C, finished basement, 2 car garage, W/ELEC. garage opener. Very private location. Numerous fine features. To view this fine property call Rudy Arbeiter * 878-8101.



DON'T CRAMP YOUR STYLE

\$229,900
Lots of room in this 5 bedroom 2 storey, plus main floor family room & laundry, 3-baths, finished rec room, central vac, upgraded broadloom, inground pool and backing onto a park. Smart buy! - Call Barbara Crowe * 878-8101.



JUST MOVE IN

Spacious 3 bedroom home on fenced lot features extra large bedrooms with master ensuite, all new windows, central air. Price \$209,900. To inspect please call Donna Syms * 878-8101.



NATURE AT ITS BEST? YES!

On beautiful one acre of mature trees, 3-4 bedroom sidesplit, eat-in kitchen, sep. dining room, very large living room, family room features fireplace and walkout to double garage and park - like backyard. \$299,000. Donna Syms * 878-8101.



GREAT NEIGHBOURHOOD \$227,900

Nestled at the end of a quiet court, this 4 bedroom home boasts a large yard with extensive wood decking extras include: leaded glass doors, new flooring, central air, remodelled bathrooms and more. Call Sandy Del Papa * 878-8101.



ALMOST "TOP OF THE WORLD" \$659,000

Perched on the brow of the escarpment beside the craggy rock-face of Rattlesnake Point, this lovely home on 19+ acres offers privacy and a view unequalled. There's 5 bedrooms, new oak kitchen, pool and more! Call Sandy Del Papa * 878-8101.



QUIET CUL-DE-SAC! BIG YARD!

\$214,900 enjoy sitting by the fireplace in your cozy rec room or entertain formally in the spacious living room dining room area. Three bedrooms (the master with a remodelled semi-ensuite) and a spotless eat-in kitchen, complete the picture. Call Sandy Del Papa * 878-8101.



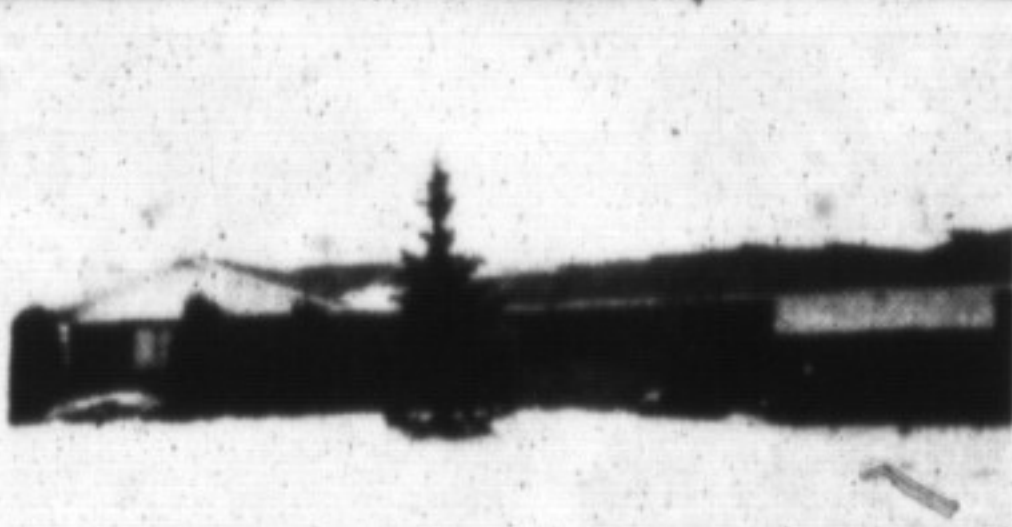
JOIN THE SMART MONEY

In this charming 3 bedroom home - a must to view. Spotless throughout, lovely country decor, pine accents, wood burning stove, fenced mature yard, new broadloom 1989, deck, spacious kitchen, and just a walk to the mall & all amenities. \$215,900. Marg Swain * 878-8101.



UNPARALLELED VIEWS

Await you in this prestigious "Robertson Built" executive home. Nestled on 2 acres amidst a neighbourhood of unique properties. Professionally landscaped. Approx. 2,600 sq. ft. of meticulous living and many upgrades \$499,900. Marg Swain * 878-8101.



\$439,000 - OVER 1 ACRE

Spacious 4 bedrooms brick ranch bungalow, features lovely main floor family room, fireplace, 2 baths rec. room, fireplace, double garage, large steel building on property well-maintained home. Contact A. Lear-Costigan * 826-9218.



\$249,000 - BRICK SIDESPLIT

On 1/2 acre lot on Twiss Rd features: 3 bedrooms, master bedroom with 3 pce ensuite, living room, fireplace, upgraded kitchen, new deck, central air, rec room with fireplace, garage. Contact A. Lear-Costigan * 878-8101.



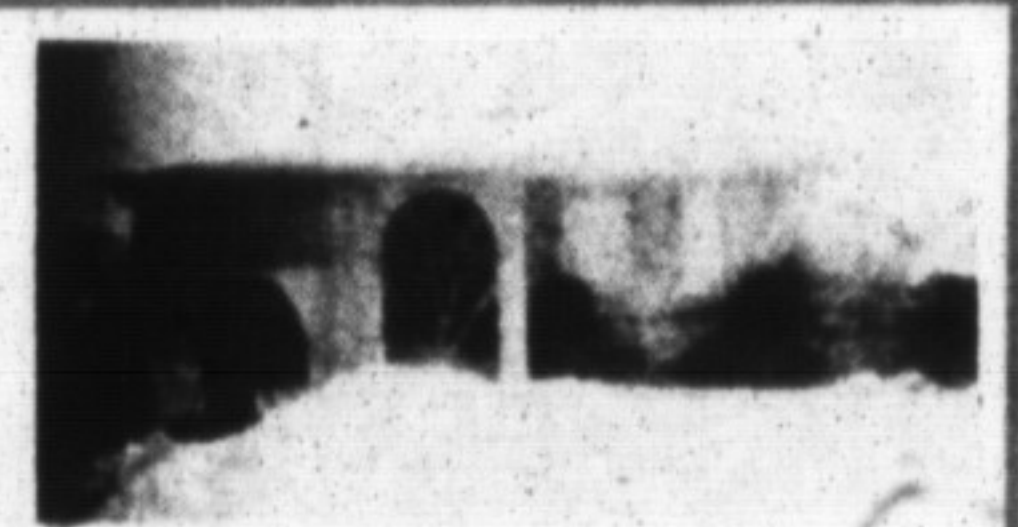
10% MTGE - SAVE THOUSANDS!!

5 minutes from 401 & 15 minutes from Milton "GO" - what a location & what a deal! This 3 bedroom, 3 bath home on a fenced, treed 3/4 acre has a large kitchen & huge deck, it's immaculate! Priced at \$319,900. Renee Harold * 878-8101.



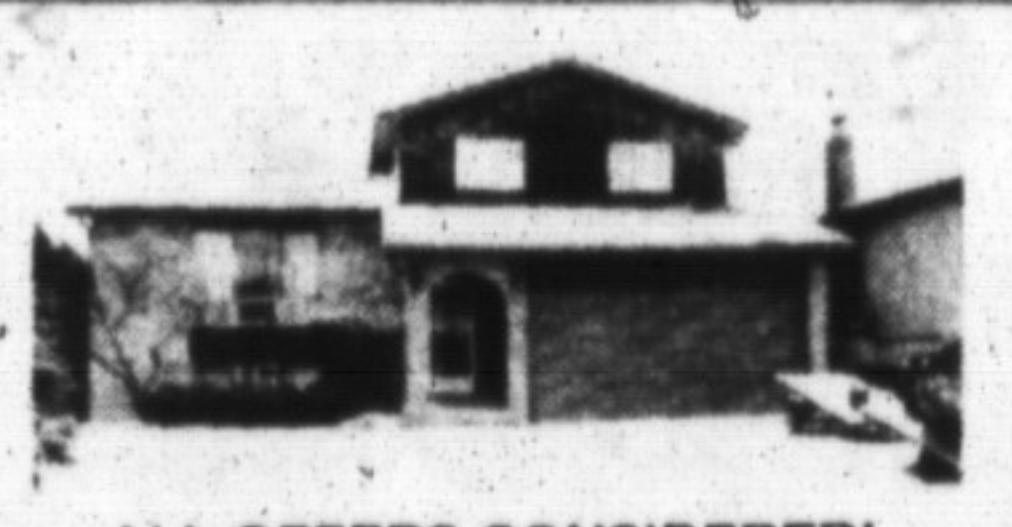
WELL...WELL...WELL...

Well-located near Mississauga/Oakville on 1/2 acre. Well-built energy efficient almost R2000 3+ bedroom home. Well-maintained New roof 1989, freshly decorated. Asking \$309,000. Call Renee Harold * 878-8101.



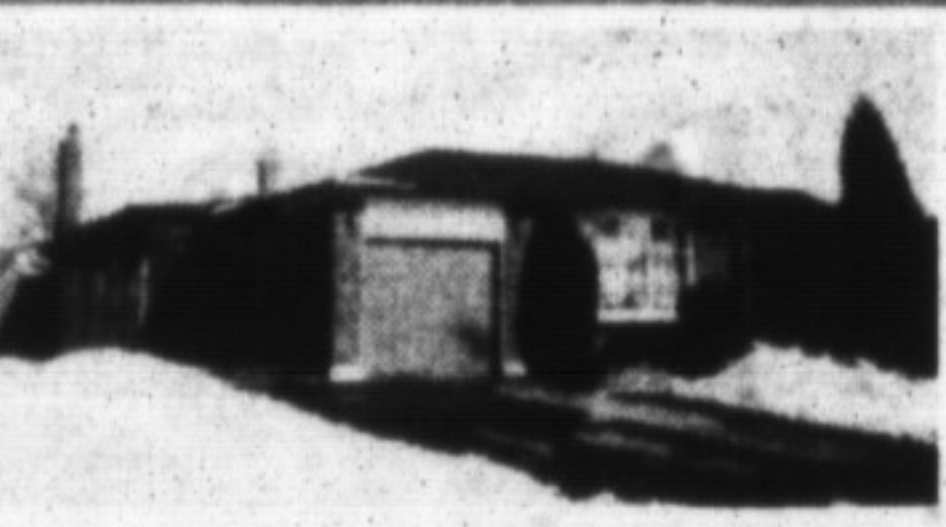
SUMMER IS COMING!

Swim & BBQ with privacy in your own inground pool, back of your 4 bedroom home. This backsplit features a large kitchen, 2 full bathrooms & a lower level finished. A must to see. \$234,900. Call Sandra Logie * 878-1881.



ALL OFFERS CONSIDERED!

Super value potential in this 3+ bedroom sidesplit in good location. Large eat in kitchen overlooking the main floor family room which has a fireplace & walkout to fenced back. Lower level is finished. Call Sandra Logie * 878-8101.



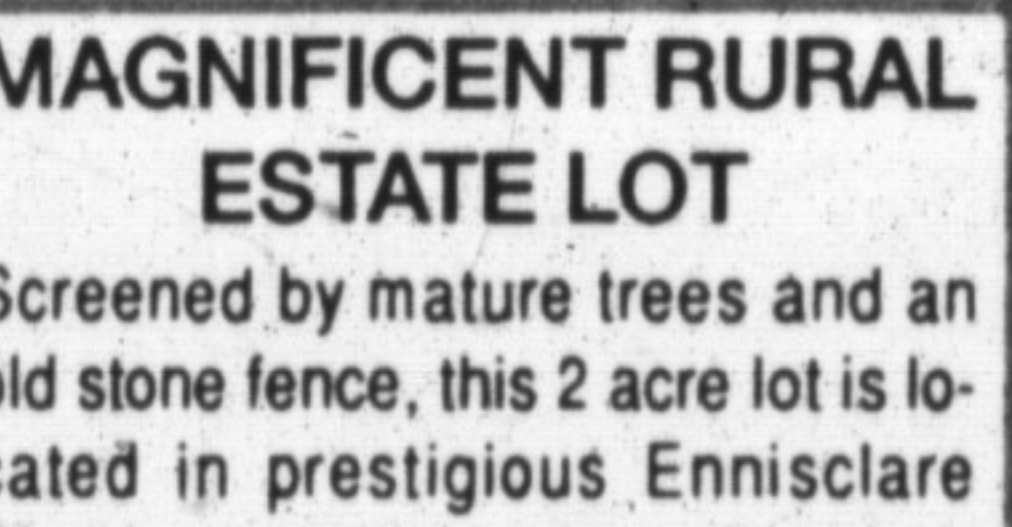
LET THE SUN SHINE IN \$269,900

Through any of the four sky-lights or 2 bay windows of this beautiful backsplit with huge addition, swimming pool, rec. rm. and modern oak kitchen featuring electric indoor BBQ and garburator. Mark Symonds * 878-8101 or 822-5886



32 ACRES - VACANT LAND

Located 10 miles north of Rockwood. 448 ft. on a paved road beautifully treed lot with a stream crossing the front. The levies have been paid. Asking \$199,900. Call Les Bunker * 878-8101.



MAGNIFICENT RURAL ESTATE LOT

Screened by mature trees and an old stone fence, this 2 acre lot is located in prestigious Ennisclore Woods, a very private and secluded rural estate surrounded by 90 acres of natural woodlands. Your choice of home can be built on this scenic lot. Inge Winther * 878-8101.

LOCAL FAMILY BUSINESS

Well established, profitable Video store. Family operated and controlled good location owner retiring will assist new owners to get established. Only interested parties to apply for details. Call Bill O'Neill * 878-8101.

A BUSINESS OPPORTUNITY FOR YOU!

Building restaurant business and equipment on 60 x 132 ft. lot in downtown Milton. 44 seat capacity & seating for 44 on patio for busy summer trade. Fully licensed and excellent parking. Offered at \$599,500 Call Norma or Ed Proveau * 878-8101.

LARGE EXECUTIVE HOME

4 bedroom all brick home has family room with fireplace, main floor laundry + 3 bathrooms. Close to schools and shopping in Timberlea area. Asking \$269,900 to view call Norma or Ed Proveau * 878-8101.

WHEN IT COMES TO PERFORMANCE - WE BELIEVE ACTIONS SPEAK LOUDER THAN WORDS, AND GUARANTEE OUR SERVICE IN WRITING. - NO ONE ELSE DOES!

There's a guarantee when you sell your home with Royal LePage. Guarantee of exceptional service. In writing. Signed by your Royal LePage representative. If we don't live up to our guarantee, you can cancel your listing.* You can't do better than that. Over the past 75 years Royal LePage has sold more homes for more Canadians than any other real estate company. We're the only company with Infohome™, our own national computer network that gives your home the exposure it deserves, both here and right across the country. We'll live up to all of our promises.

Guaranteed!
In Writing!
Only from Royal LePage.

It's you that counts the most.

*Guarantee outlines specific conditions.
Royal LePage Real Estate Services Ltd., Broker
Not intended to solicit properties already listed.



PRICE BREAK-REDUCED TO \$212,900

3 bedroom, 3 bath home in Timberlea features 2 car garage, main floor family room with fireplace and more. Spotless and awaiting its new family! Was \$219,900-now a super buy at \$212,900! Vendor says "sell". Call Barb LaFleche * 878-8101.



NEWLY LISTED - TIMBERLEA \$249,900

This 3 bedroom backsplit is on a large beautifully landscaped lot and is immaculate inside and out. Kitchen overlooks large fam. rm. with f.p. 2 baths, double garage, private patio and more. Call Karen Irvine * 878-8101



HOT OFF THE PRESS- JUST LISTED

Super 4 bdrm 2 storey home nestled on a quiet court. Extensive landscaping and decking, hollywood style kitchen with oak cupboards, spacious layout, knotty pine rec. room and much more \$242,900. Marg Swain/Denzil Lawrence 878-8101.



SECRETARIES

Gayle Ford • Ginger Tiede
Wendy Girard • Shirley Botterill
Shirley Langdeau

It's you that counts the most.

LAMONT LEONE - Manager**

Karen Irvine*	876-4154	Rudy Arbeiter	878-3558
Donna Syms*	878-3112	Audrea Lear Costigan*	
Les Bunker*	519-856-4352		878-9151
Denzil Lawrence*	878-1944	Bill O'Neill*	878-2679
Margaret Swain*	878-7687	Sandi Kinsale*	878-0392
Ed Proveau*	876-1707	Sandy Del Papa*	878-5229
Joyce Hagevik*	876-1084	Barbara Crowe*	878-7875
Inge Winther*	853-1990	Sandra Logie*	878-1881
Norma Proveau*	876-1707	Jean Thomson*	878-0767
Brenda Johnson*	878-5788	Renee Harrold*	878-4526
Paula Rasmussen*	854-0176	Mark Symonds*	822-5886
Denise Kerslake*	876-1735	Barbara LaFleche*	875-3303
Doeman Chow*	878-3989		** Broker
Virginia Brazeau*	878-1221		* Sales Representative