

ROYAL LEPAGE



SHOWN WITH PRIDE \$279,900
Original owners have lovingly cared for this large 4 bedroom home (approx. 2100 sq. ft.). Features include central air and vac, main floor family room and laundry, extra large bedrooms, 3 baths and charming decor. Call Karen Irvine * 878-8101.



A STATEMENT OF DISTINCTION
This stately brick and stone 2 storey 4 bedroom home commands your attention. Set on over 4 treed acres high on a hill with gorgeous view and lots of privacy. Inground pool and first class throughout. Discriminating buyers will appreciate the features this home has to offer. Joyce Hagevik * 878-8101.



INVESTORS OR HORSE LOVERS.....
Take note 62 acres plus barns century home and guest house. Property features pond, stream and 10 acres of hardbush. A lovely country property with endless possibilities. Call today for more information. Joyce Hagevik * 826-9218.



PROMISES A LOT, DELIVERS MORE
Oozing with "country character and charm" pine stairs and pine accents throughout. New broadloom '89, super mature lot and deck walking distance to mall, library and all amenities, wood burning fireplace, central air and vac, lots more. \$215,900 Marg Swain * 878-8101.



UNCOMMON BEAUTY, UNPRECEDENTED VALUE
This is an elite, meticulous executive contemporary split bungalow - approx. 2600 sq. ft., 2 plus acres, luxury and many upgrades throughout. 200 amp service, interlocking patio/walkways, extensive landscaping - Call for full details \$499,900 Marg Swain * 878-8101.



COMMUTERS SPECIAL - \$309,000
Well-maintained country home on picturesque 1/2 acre near Oakville/Mississauga borders. This energy efficient 3 plus bedrooms sidesplit has superb access to major highways. For details please call. Renee Harrold * 878-8101.



10% MORTGAGE - SAVE THOUSANDS!!!
5 minutes from 401 & 15 minutes from Milton "GO" - what a location, 3-bath home on a fenced, treed 3/4 acre has a large kitchen & huge deck. It's immaculate! \$319,900 Renee Harrold * 878-8101.



BLUE CHIP OFFERING - \$759,000
Nestled on a 2 - acre lot in beautifully scenic Campbellville, this home offers vaulted ceilings, plank pine floors, 3 fireplaces, library and formal livingroom. Large central kitchen with many built-ins. D. Lawrence or D. Kerslake. *



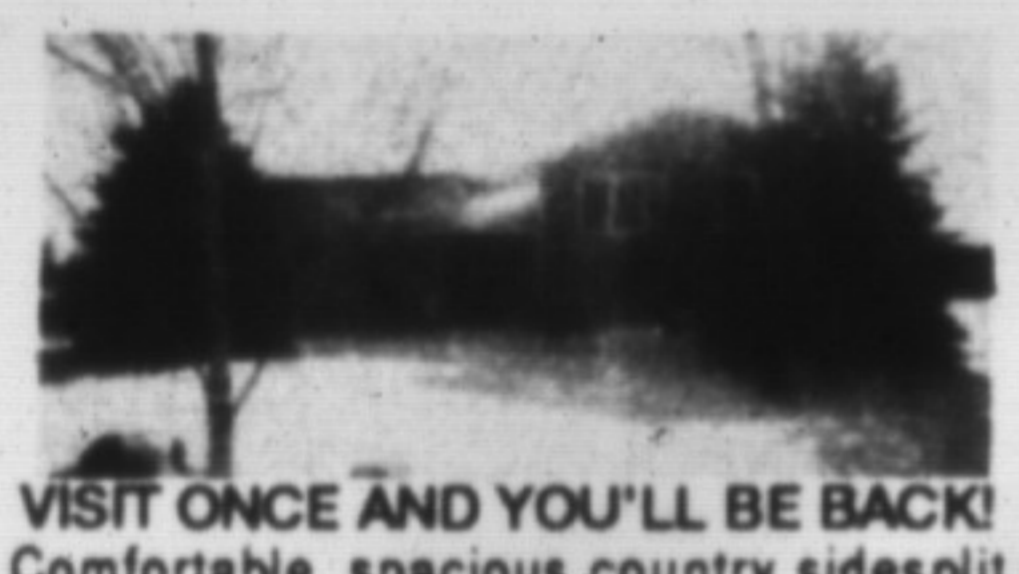
SPLENDID HOME
Custom-built three-level home stands on high point of a 5-acre lot. Excellent view of surrounding countryside. Curved interlocking drive & pond. Generous use of oak and marble. \$1,599,000. D. Kerslake * 878-8101.



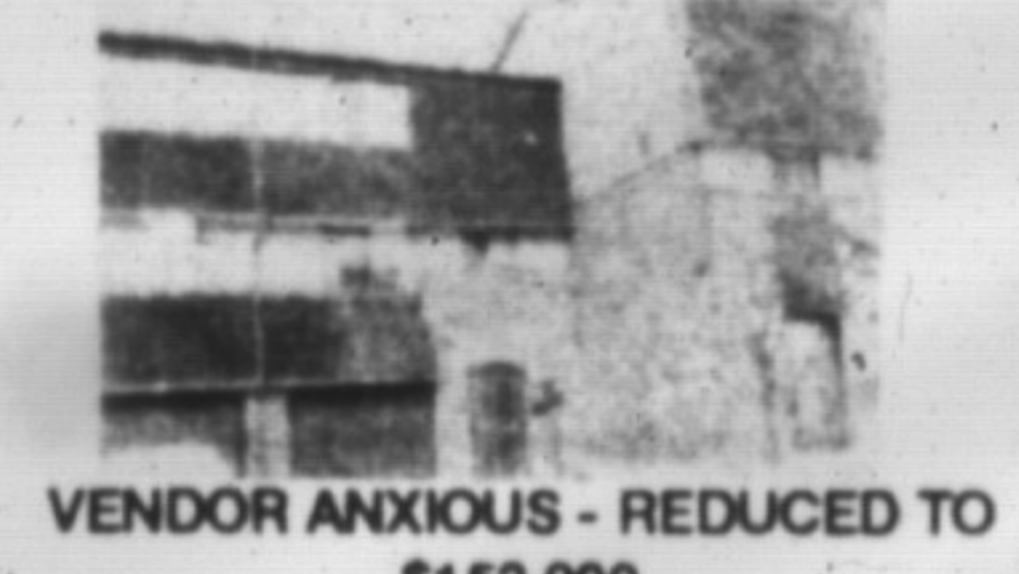
LET US BUILD YOUR DREAM HOME
Five lots to choose from. Bring your home plans or we will help you choose a suitable plan. Price will vary according to square feet. Model shown is \$395,000 or buy lot for \$169,900. D. Lawrence or D. Kerslake * 878-8101.



STARTER HOME - \$198,900
Two-bedroom home located in the heart of a quiet, picturesque village. Very pretty treed lot of approx. acre. Commercial lot available price at \$199,000. Call D. Lawrence or D. Kerslake * 878-8101.



VISIT ONCE AND YOU'LL BE BACK!
Comfortable, spacious country sidesplit located on well-landscaped .68 -acre lot. Newly decorated country kitchen and upgraded carpeting. Finished rec room with fireplace. \$258,000. D. Lawrence or D. Kerslake. * 878-8101



VENDOR ANXIOUS - REDUCED TO \$152,900
Looking for an offer on this comfortable Laurier-area townhouse. Walkout to fully fenced privacy area, 2 baths and bright kitchen. Vendor will assist in re-financing. Early possession available. D. Kerslake * 878-8101.



HIGHLY RECOMMENDED \$308,500
This 4 bedroom home in Timberlea shows to perfection and features superb decor, large master with full ensuite and walk-in closet, family room with attractive custom bookshelves, central air and vac. Call Karen Irvine * 878-8101.



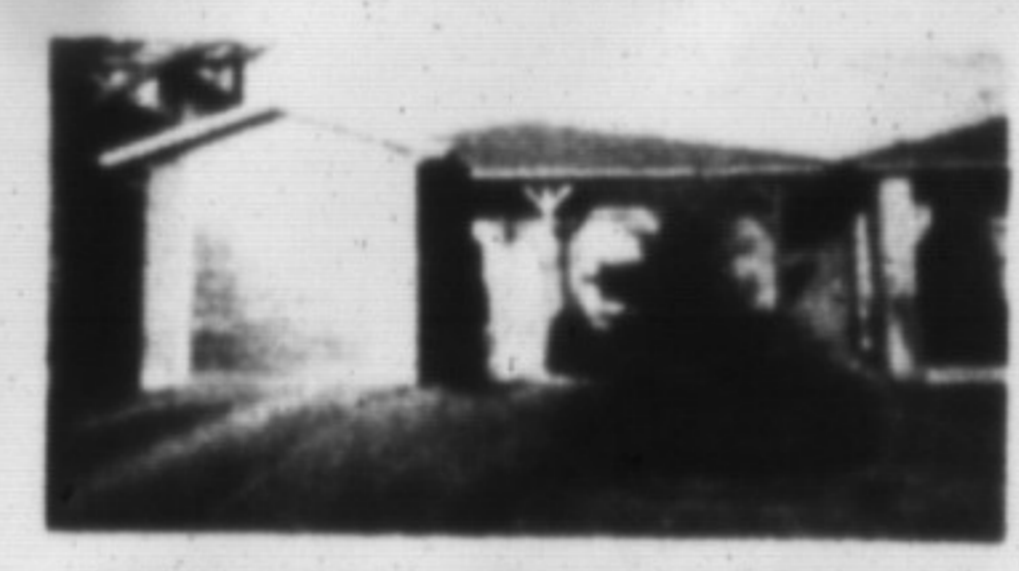
TAKE A CLOSER LOOK \$204,900
At this immaculate 3 bedroom home on a premium lot. Features include super big kitchen with w/o to new deck and deep lot, profession finished basement, large master with semi-ensuite, central air and upgraded brdm. Call Karen Irvine * 878-8101.



VIVE LA DIFFERENCE
Well maintained 2 storey with 4 bedrooms plus den, 3 baths main floor family room and laundry, central vac, upgraded broadloom, finished rec room with inground pool unusually good home and exceptionally low priced at \$229,900. Barbara Crowe * 878-8101.



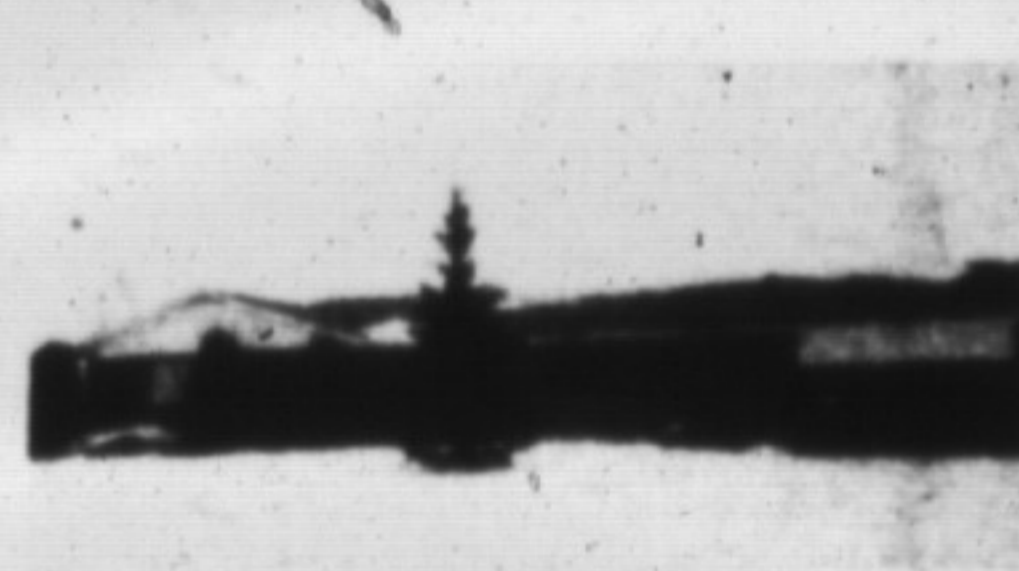
BRIGHT BACKSPLIT BEAUTY \$269,900
Situating on large lot, 3 bedrooms, 2 bathrooms, 4 skylights, and huge addition. New custom oak kitchen with built in elect. bbq ceramic floors hardware and brdm throughout 2 bay windows french doors and pool. Mark Symonds * 878-8101, 822-5886.



YOU'LL FEEL AT HOME \$218,900
When you see this well cared for bright and spacious 4 bedroom backsplit a large kitchen overlooking the family with a fireplace also features 2 baths and is close to public and high schools. Call Barbara Crowe * 878-8101.



\$249,000 - COUNTRY
Located on lovely half acre lot, features 3 bedrooms, master bath has ensuite, upgraded kitchen, central air, double garage, lovely view and more. A real charme please call A. Lear Costigan * 878-8101.



\$439,000
Spacious 4 bedroom ranch bungalow on acre lot offers main floor family room and rec room, central air, much more including large out building for the handyman. For more information call A. Lear-Costigan * 878-8101.



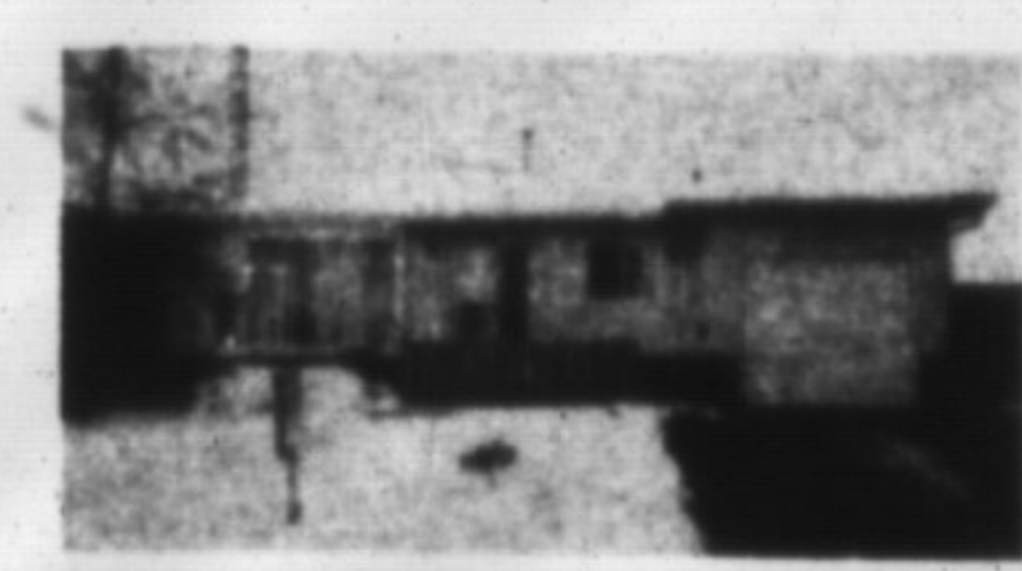
\$299,000 - COUNTRY
Convenient, secluded acre surrounds this 3 or 4 bedroom sidesplit, spacious rooms include main floor family room with fireplace, separate dining room, eat-in kitchen, very large sunny living room, double garage, walkout to park like backyard, all well-cared for and an early possession possible. Donna Syms * 878-8101.



\$209,000 - COMMERCIAL
3 bedroom home on large lot in center of Rockwood village, suitable for almost any business operation. For more information please call Donna Syms * 878-8101.



ATTRACTIVE FAMILY HOME
Charming 2 storey home - with custom oak flooring in living room, dining room and kitchen ceramic floors in bath and hallway; air conditioning and many more extras to inspect or for more details contact Bill O'Neill Price \$219,900. Bill O'Neill * 878-8101.



BACKSPLIT PLUS - PLUS - PLUS!
Plus central air and air cleaner: New windows, high eff. furnace above ground pool - deck - built on utility room, b/d w. fence lot and many more extras Price: \$216,900 for more details or to inspect call Bill O'Neill * 878-8101.



MILTON CONVENIENCE STORE
3700 sq. ft. building composed of 3 bedroom home with large bright rooms & main floor country store. Excellent traffic location & parking. Full basement with separate entrances. Offered at \$525,000. For further information call Ed or Norma Proveau * 826-9218.



COUNTRY BUNGALOW
Beautiful 2,300 sq. ft. home on 2 acres with pond features large, sunny modern kitchen surrounded by deck, oak floors in dining and family rooms, double garage and huge walkout basement, less than a year old. \$398,000. Donna Syms * 878-8101.



50 ACRE COUNTRY ESTATE
Nestled at the foothills of the beautiful escarpment and commanding a panoramic view this french country house with its sprawling wings and drive court offers large formal rooms throughout. Campbellville area. Inge Winther * 878-8101.



COUNTRY STORE - POST OFFICE
\$639,900. Located in a charming hamlet surrounded by large country estates. This 2 storey brick building features 2 large apartments, large wing, separate new storage building. All rented, 20 mins. from Mississauga. Call Inge Winther * 878-8101.



COMMERCIAL 3,500 SQ. FT. BUILDING
\$848,000 built in stone and featuring a classic century design to blend with the core of the business section in well-known Campbellville. This new building consist of 3 units, all leased, with parking area in front. Inge Winther * 878-8101.



HISTORY TO LIVE IN \$219,000
Circa 1860 stone clad home on a beautiful mature lot in Rockwood. Large country kitchen. Pine plank floors, Restoration with taste. Perfect starter or retirement nest for the artistic. Call Ed or Norma Proveau * 878-8101.

388 MAIN ST. EAST
878-8101
(Tor. Line) 826-9218
Toll Free 1-800-263-4176

SECRET
Gayle Ford
Wendy Girard
Shirley
It's you that