

RE/MAX

Miltowne Realty Corp.
22 Ontario St. South 878-2365

RE17 - The Canadian Champion, Wednesday, March 14, 1990



SANDRA A. BAILEY
Sales Representative

878-2365

Res. (519) 658-9040

Tor. Line 826-1030

OPEN HOUSE
Sun., March 18/90
2 - 4:30 P.M.



755 Roseheath

LOOK LOOK

You can move into this lovely 2 storey home in the spring. It offers many extras
- Remodelled kitchen
- Finished recreation room & wet bar
- Central air
- Professionally landscaped, large deck to enjoy it
Priced at \$212,800. For a personal viewing please call Sandra A. Bailey

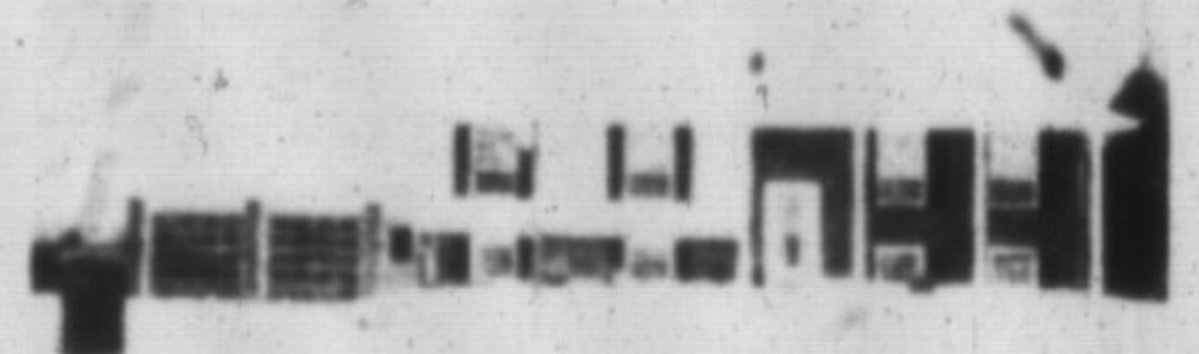


SHARON KERLEY

Sales Representative
Office 878-2365
Toronto 826-1030
Residence 854-0474

A TOWNHOME YOU WON'T WANT TO MISS

Just listed. Beautifully decorated throughout. New broadloom, baseboards and trim. Walk-out from living room. 2 pc ensuite off master bedroom plus additional 4 pc and 2 pc baths. All recent model appliances negotiable. Call Sharon Kerley.



PANORAMIC VIEW

Country living conveniently located 15 min. south of Milton. This home offers a custom designed greenhouse style kitchen, walkout basement has beautifully finished family room with pine wainscoting, fireplace and bar. Other features include a 16 x 32' inground pool, oversized double car garage and a beautiful escarpment view. Call Sharon Kerley \$395,000.



SUPER NEIGHBOURHOOD

This well cared for semi-detached home is located on a quiet crescent, convenient to schools and offers a spacious lot, neutral decor, main level fireplace and 1 1/2 baths. Call Sharon Kerley \$189,900.



ASSUMABLE AT 11%

This 3 bedroom townhouse is waiting your inspection.
- Eat-in kitchen
- Living & dining combination good size
- Patio doors to private yard
- Finished recreation room
Priced at \$146,800 - Call Sandra A. Bailey for a personal viewing.

OPEN HOUSE
SAT., 1 - 4:00 P.M.
341 Wilson Dr., Unit #75



SCHOOLS - PARKS WITHIN WALKING DISTANCE

Makes this 3 bdrm townhouse so desirable. As well as eat-in kitchen, new flooring, separate dining room, cosy fireplace, separate laundry room. A must to view. Please call Sandra A. Bailey. Price \$162,800.



SPECIAL

This 4 bdrm. backsplit in Timberlea has so much to offer.
- 50x150 lot size
- double car garage
- country kitchen
- inground pool
- central air
- cosy fireplace
Priced at \$282,800 - Call Sandra A. Bailey for a personal viewing.



SPRING INTO ACTION

View this 4 bedroom townhouse on a desirable area of Clarkson.
- Close to all amenities.
- There's more! Please call Sandra B. Bailey for a personal viewing. 826-1030 \$182,800.

DESIRABLE - I'LL SAY

Executive home - 35-40 minutes from Mississauga, 2 storey, 4 bedroom, 4 bathroom, 2 fireplaces. For a personal viewing please call Sandra A. Bailey, 826-1030 Tor. Line. \$255,800.

RE/MAX

Above the Crowd!



MIKE MORGAN

Associate Broker
878-2365
826-1030 (Tor. Line)
878-8093 (Res.)



YOU'LL BE SURPRISED

at incredible amount of living space, in this multi level home. Central air, fabulous, finished lower level, plus numerous other features. For further details call Mike Morgan.

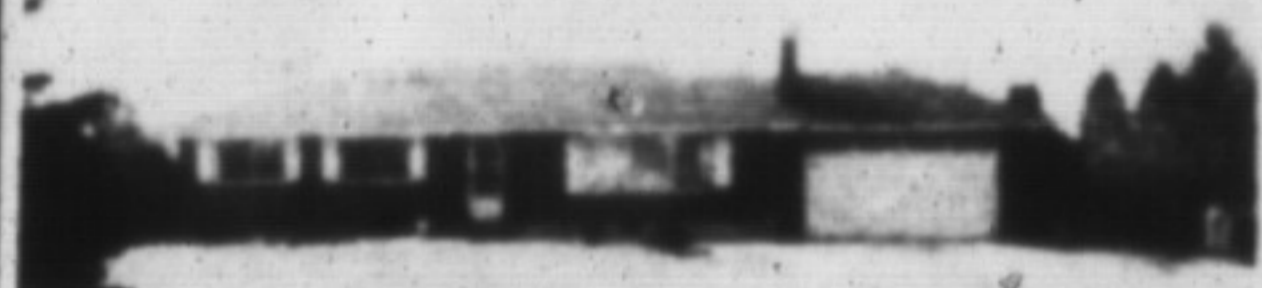
\$238,900.



YOUR DREAM KITCHEN

Over \$50,000. spent on renovation/upgrades of kitchen/eat-in area. Hear all about the endless features of this 3-bedroom sidesplit. Call Mike Morgan.

\$284,900.



11.3% MORTGAGE TIL SEPT. '93

3 bedroom quality-built brick bungalow on just over 1/2 acre. Gleaming hardwood floors, upgraded broadloom, finished rec. room. See it now, call Mike Morgan.

\$239,900.



COUNTRY STORAGE BUILDING

6000 sq. ft. storage building in North Milton, on 1-1/2 acres. Plenty of room for house at front of property. For further details call Mike Morgan.

\$289,900.



PEACEFUL

See this ever pleasing Cape Cod 2 storey with its glassed-in sunroom, pine panelled family room and Barzotti kitchen. Set on a treed 2 acres overlooking a pond. Call Mike Morgan.

\$499,900.



SOUTHWOLD ESTATES

Brick and cedar 3 bedroom bungalow with the finest quality workmanship on a secluded wooded 2.16 acres. Truly special. Call Mike Morgan.

\$539,900.



EXCEPTIONAL

Immaculate 2-storey, 4 bedroom, custom-built 2200 sq. ft. home in Freeton. For a list of all the outstanding features contact Mike Morgan.

\$329,700.



A STONE'S THROW

Very private custom-built backsplit on 1.64 acres. Close enough for town water, plus numerous other outstanding features. For further details on this quality, country home contact Mike Morgan.

\$399,900.



INVESTMENT OPPORTUNITY

Beautifully renovated older home with Main Street exposure and commercial zoning. Call Mike Morgan.

\$329,900.



GREAT LOCATION

Spacious, top quality backsplit with 4 bedrooms, 3 bathrooms and a kitchen overlooking the main floor family room with walkout. Just listed. Mike Morgan.

\$270,000.

IF YOU ARE GOING TO BUILD THIS YEAR

IT'S TIME TO BUY YOUR LOT
100' x 200' Building Lot with well on Highway #25 \$165,000.

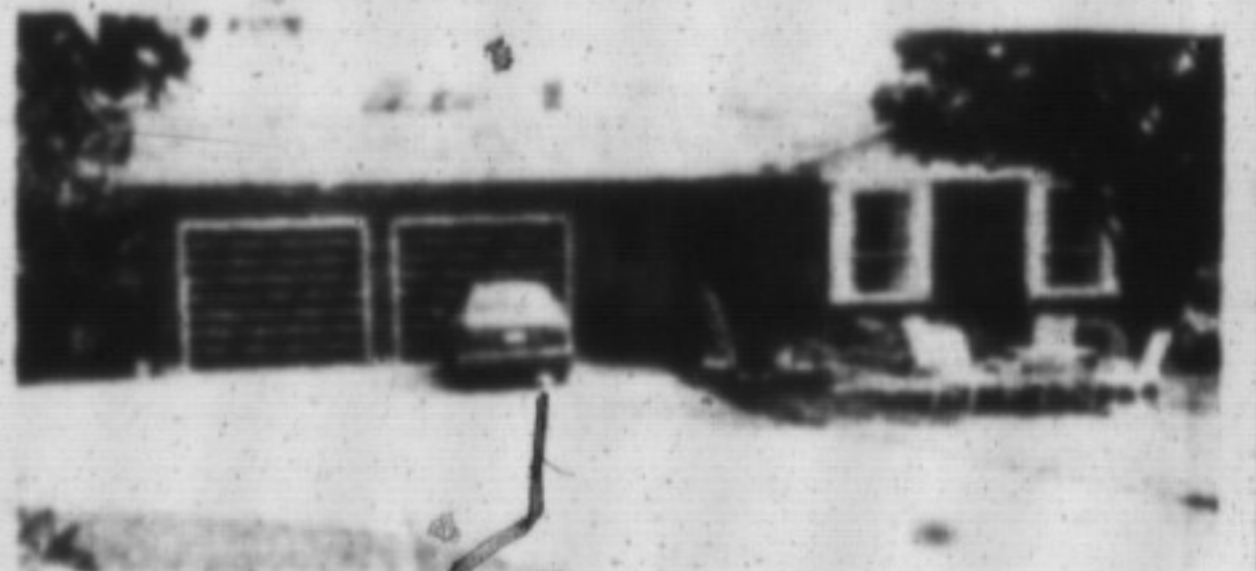
1.4 acres (166 x 370) Building lot in Moffat \$179,900.

Prime C1 Commercial Building Lot on Main St. \$695,000.



JEAN SNOWDEN

878-2365
878-3155



YEARNING FOR THAT COUNTRY FEELING?

This beautiful custom built home just minutes from town is set on a secluded rolling 1.6 acre lot with an escarpment view. The home offers up to five bedrooms, family room with beams and brick fireplace & much, much more. Call Jean for full details...\$399,900.



MOVE IN THE RIGHT DIRECTION

To an immaculate one-owner home with all the extras for comfortable living; a rec room with fireplace, large kitchen, sep. dining room, central air, central vacuum, large lot with mature trees...call Jean for full details...Just listed \$219,900.

If you're thinking of buying or selling or would like information on any aspect of Milton's Real Estate Market, please give me a call.