

The Canadian Champion, Wednesday, March 14, 1990—RE6

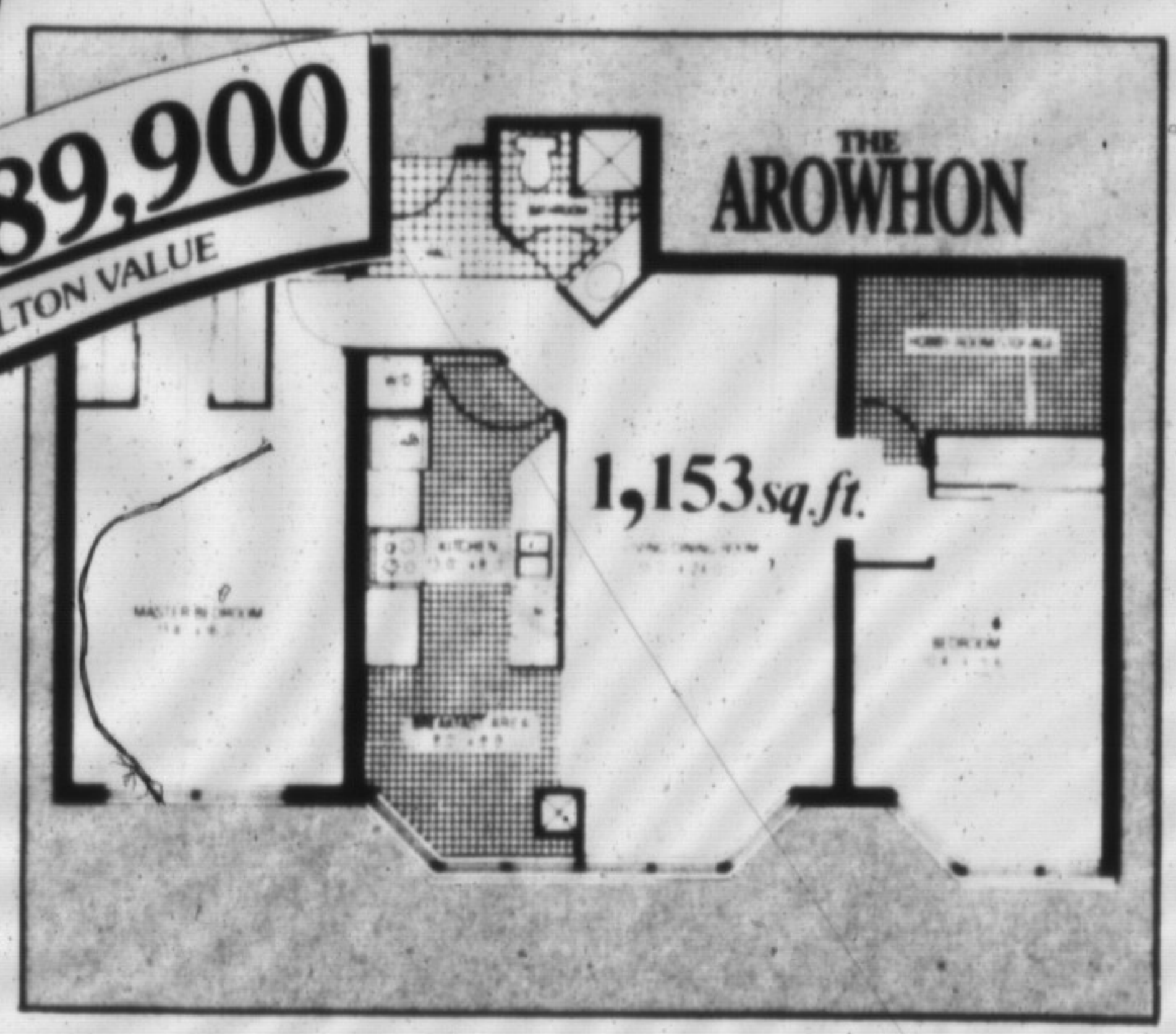
# THE \$64,000 QUESTION

IF YOU BUY BEFORE MARCH 31/90 ENJOY A FURTHER SAVING OF **\$20,000** MADE UP OF:

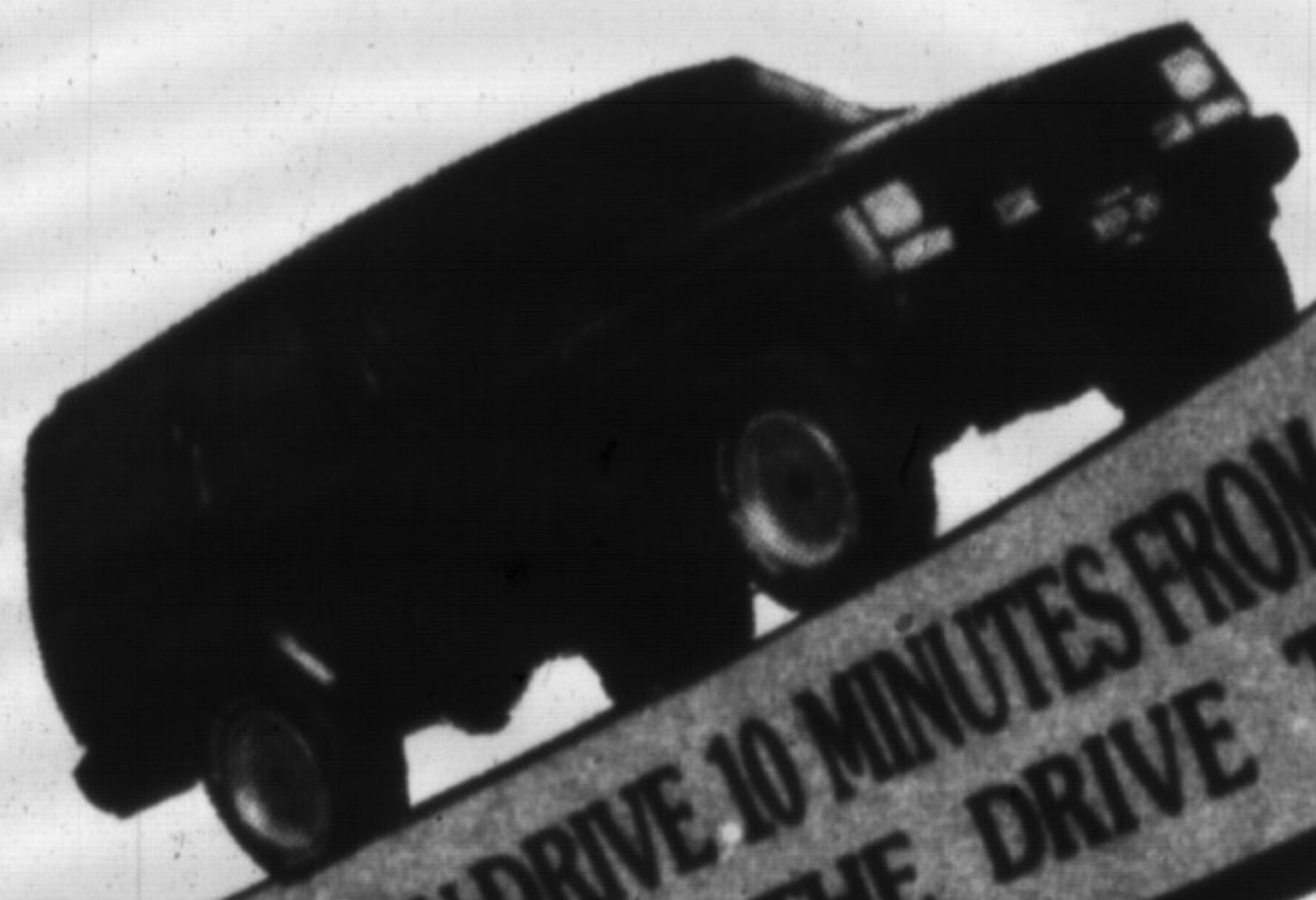
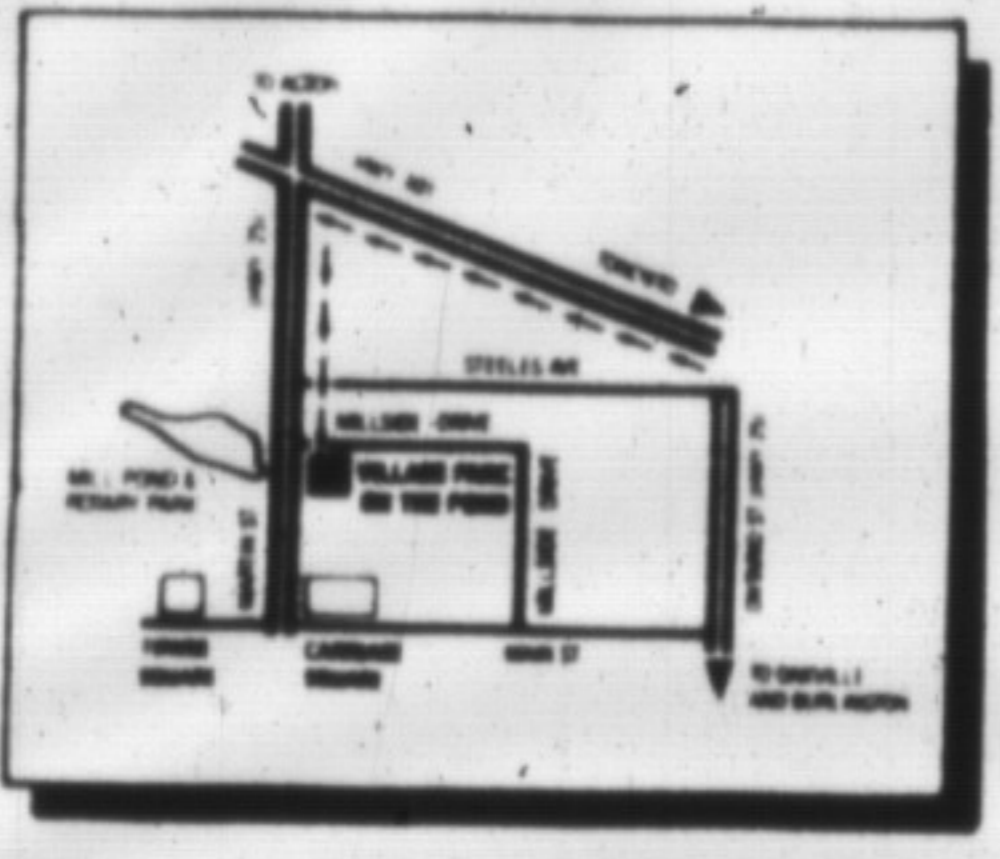
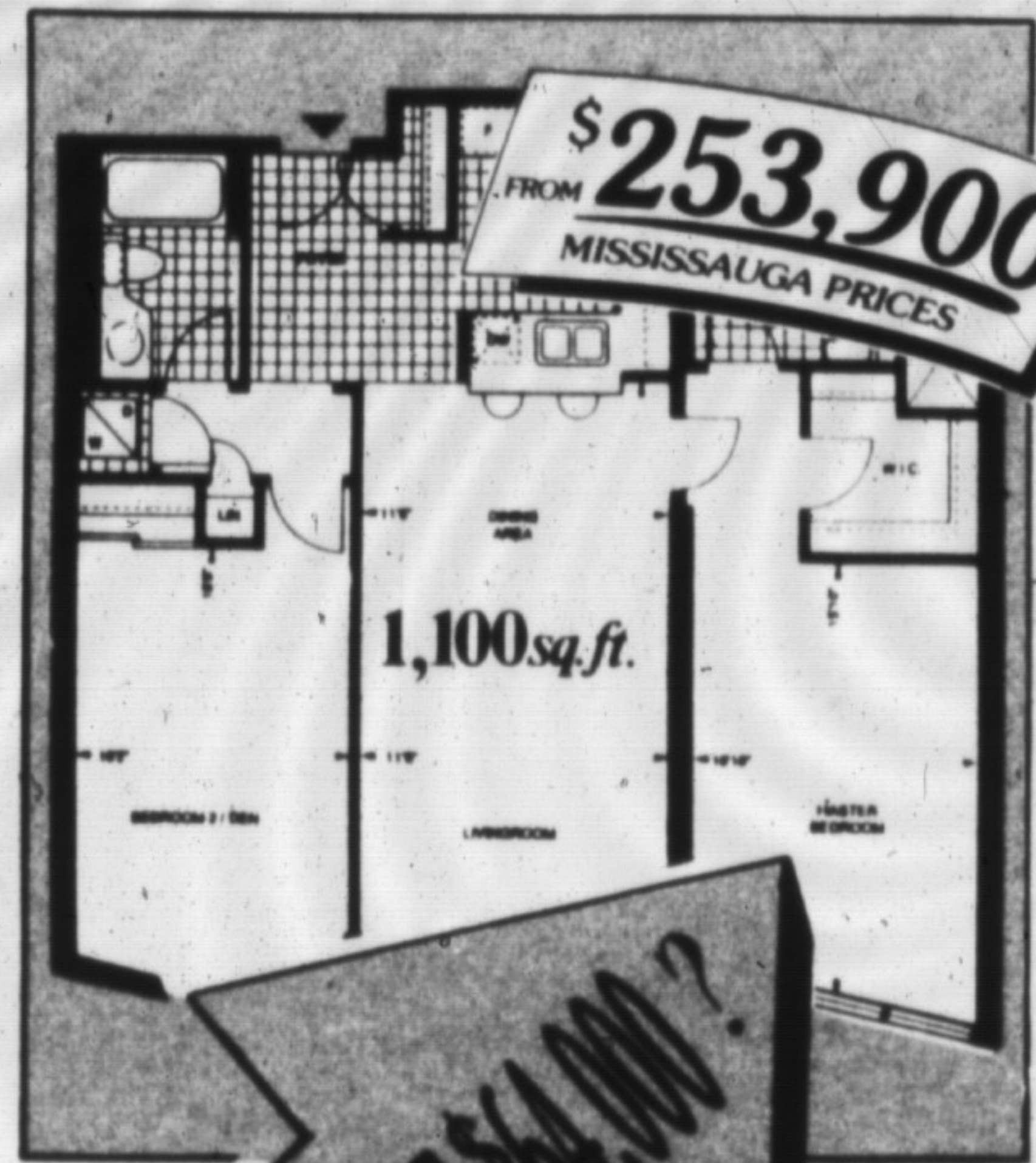
- **LESS** INTEREST PAID ON DEPOSIT.\*
- **LESS** MAINTENANCE FEES PAID FOR TWO YEARS.\*
- **PLUS** SPECIAL MOVE-IN BONUS\*

## \$169,900\*

**\$189,900**  
FROM MILTON VALUE



**\$253,900**  
FROM MISSISSAUGA PRICES



WOULD YOU DRIVE 10 MINUTES FROM MISSISSAUGA TO MILTON TO SAVE \$64,000?  
IT'S WORTH THE DRIVE TO MILTON!

*Village Parc*  
ON THE POND

Prices and Specifications subject to change without notice.

\*Details at Sales Center. \*\*Average Two Bedroom Condominium in Mississauga, February 1990.

PHONE: 875-0030 Milton  
360-6441 Toronto line