

Marketplace

RAINBOW TAXI LTD.

MILTON

ANYTIME, ANYWHERE

- Airport Specialists
- Parcel Delivery
- Flat Rates Available



Locally Owned & Operated

875-3015 or 875-3016

OPEN HOUSE
Sun., March 4 2-4pm
149 Britannia Rd.
(between Hwy. 25 & Trafalgar Rd.)

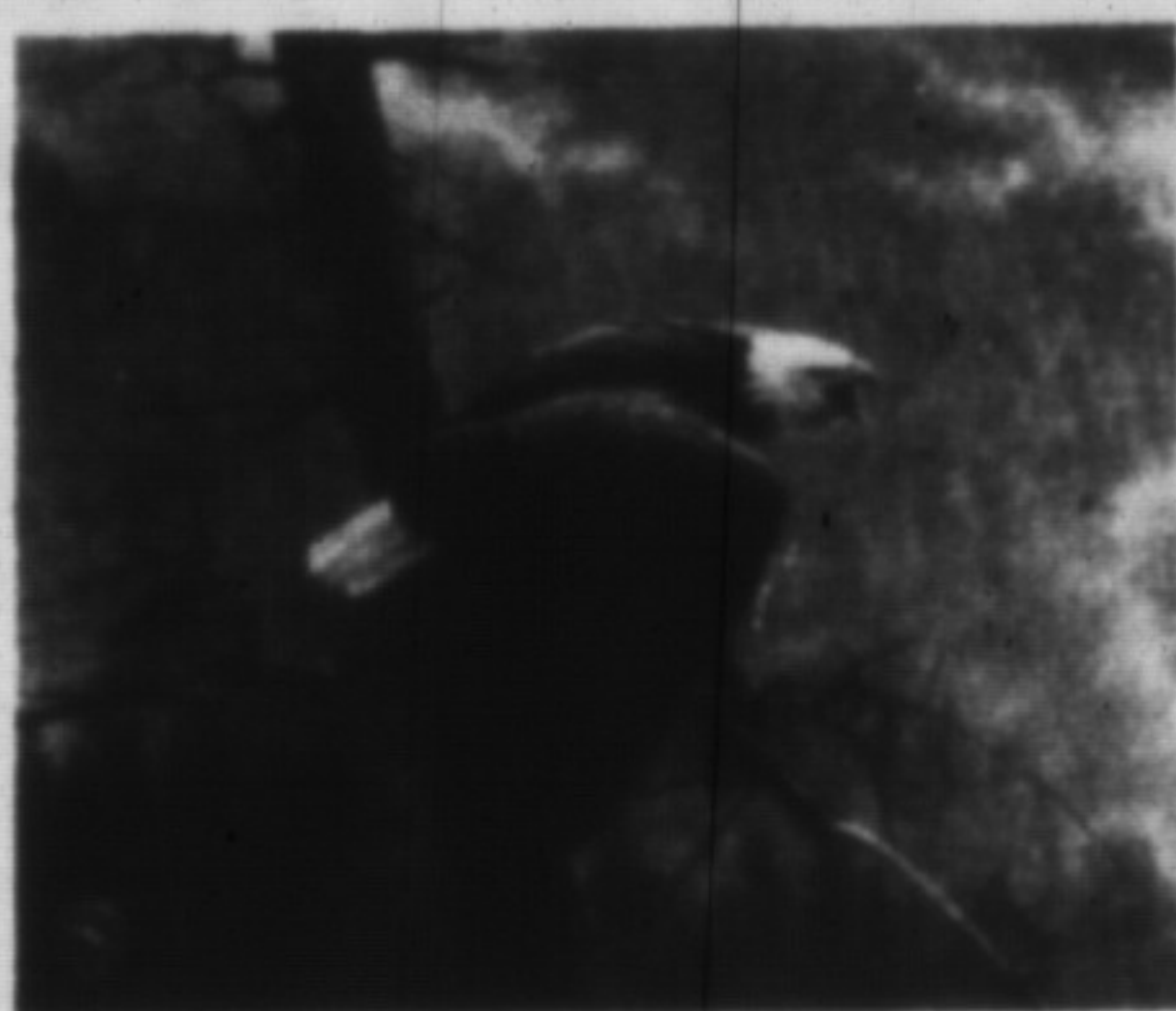


3 bedroom brick ranch on 150x150 country lot, lge. eat-in kitchen, dining room. Main floor family room with fireplace. Move in condition. Asking \$299,000. Call Freda Lawrence, RE/MAX Miltowne.

OFFICE 878-2365
RES 878-4860

Country Gallery

ART & ANTIQUES
presents: ROBERT BATEMAN



The Air, The Forest
& The Watch
Regular \$485**
Our Price

\$350⁰⁰

OPEN 7 DAYS A WEEK
(SUNDAYS 12 - 5)
CUSTOM FRAMING

PHONE
ORDERS
ACCEPTED

(416)

26 Main St. W., Milton (Next to L.C.B.O.)

875-1751

TIDY CAR

KEEPING CARS IN SHAPE WORLDWIDE

295 Main St. East

Milton

Cellular Phone Installations
from \$100⁰⁰

We Install Customized
RUNNING BOARDS

A Full Line of Custom Car & Truck Accessories

\$89⁰⁰ Value FREE

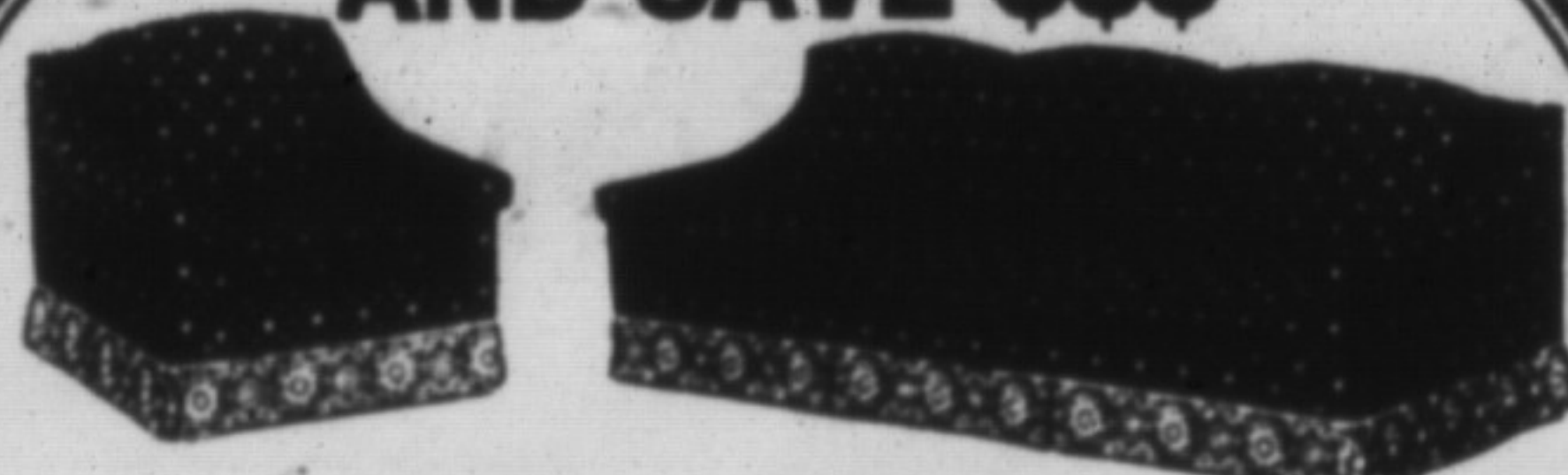
Phone for details

875-3367

- DRY CLEANING INTERIORS
- FABRIC PROTECTION
- VINYL ROOF REVITALIZING
- TOUCH UP PAINT
- SPLASH GUARDS
- WINDOW TINTING
- PRESERV-A-SHINE
- SUNROOFS
- RUST PROOFING
- CAR COVERS
- RUNNING BOARDS
- PIN STRIPING

SAME DAY SERVICE

**REUPHOLSTER
AND SAVE \$\$\$**



(Above upholstered by Stone's Craftsmen)

Come See Us
at the Milton Mall
All Week
Feb. 26 - March 3rd!
We will be in front
of Jack Fraser's.

- Camper & Boat Cushions
- Antique & Modern
- Restyling • Rebuilding
- Budget Terms
- Reasonable Labour
- Rates

- 5 Year Warranty on workmanship
- Free pick up & delivery
- Free in home estimates

**STONE'S
UPHOLSTERING**

5183 14th Sideroad
MILTON

FOR FREE IN HOME
ESTIMATE CALL
878-5322

ESTABLISHED
1974

North End Nissan's Savin' O' The Green!

(ON ALL IN-STOCK VEHICLES)



**TEST DRIVE
& WIN**

When you test drive
one of our cars, your
name will go into a
draw. You could win
100 litres of
Free Gas
& Much Much More

8.9%

or

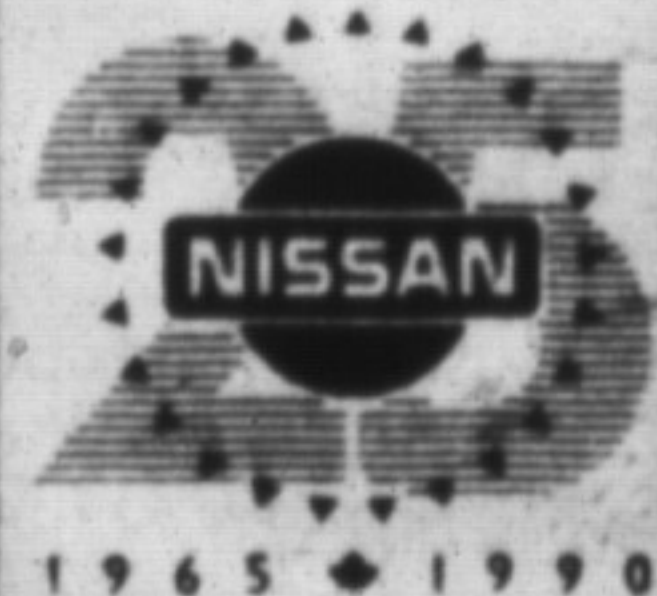
\$1,000

CASH BACK
on 1990 SENTRAS
& 1990 PICKUPS

WE HAVE 35
NEW VEHICLES
IN STOCK
& 40 USED
VEHICLES
IN STOCK

(20 of which are '89 & 90's
excellent used low mileage cars)

See Sales Person for Further Details!



1965-1990

NORTH END NISSAN

610 MARTIN STREET, MILTON

878-4137