

# RE/MAX

## Miltowne Realty Corp.

"Locally owned and operated"

22 Ontario St. South 878-2365

RE19—The Canadian Champion, Wednesday, February 28, 1990



**Gail Pullen**  
878-2365 Res.  
878-0110 office  
826-1030 Tor. Line



**LET'S MAKE A DEAL**

Chock full o' value is this 3 bedroom sidesplit backing onto parkland. Features a main floor fam. rm. with fireplace, central air, upgraded broadloom thru out, large unfinished rec. rm., plus walk-out to park. Reduced to \$212,900. Call Gail Pullen 878-2365.



**\$147,900.**

Super townhouse just beside IGA, 4 levels, 3 bedrooms, 3 baths, worth a look. Gail Pullen 878-0110, 826-1030.

FREDA LAWRENCE 878-4860	GAIL PULLEN 878-0110	RON FURIK 878-3337	LINDSAY McLAREN 854-2451
MAURICE MILJOUR 876-4577	PHIL PRESTIDGE 878-6924	SHARON KERLEY 878-6924	KEN NEWELL 878-5339
AUDREY NEWELL 878-5339	BETTY BRADING 878-6716	STELLA HALL 878-4339	JEAN SNOWDEN 878-3155
LORRAINE RANDALL 828-SOLD	SANDRA BAILEY (519)-658-9040	CLAYTON HACKENBROOK 875-0771	ALAN BROOKS 875-0067
WAYNE WARNER 878-1084	RICHARD HIERMAN 878-5806	BETTY INGLE 827-4286	RON MACNEIL 878-0198
LINA WARNER 878-1084	CAROL M. BROOKS 875-0067	MIKE MORGAN 878-8093	ANNE TAYLOR 854-9833
DOUG BUTSON 878-2054	CAROLE STONHILL 876-4913	PAUL PAGE 878-2995	

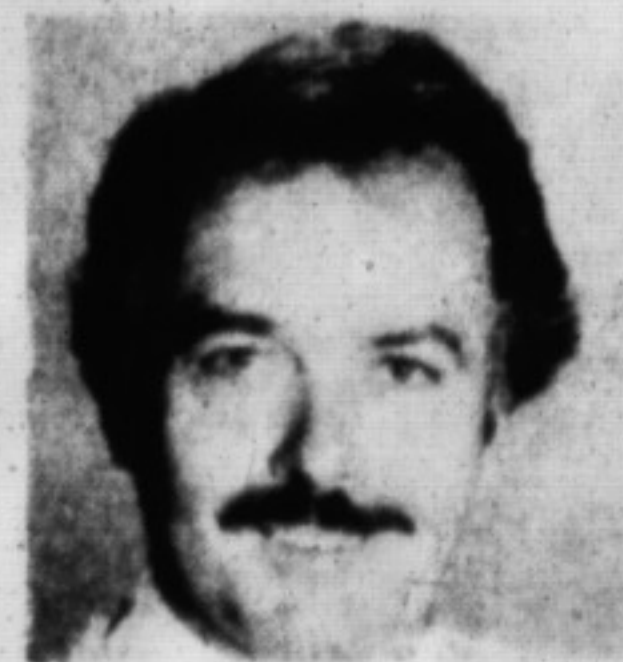


**PHIL PRESTIDGE**  
878-2365  
878-6924



**GRAND COUNTRY**

Located just southwest of Campbellville this 103 plus acre property offers a brand new custom built 5000 sq. ft. home, 3 car garage, paddocks for livestock, brand new industrial type out building. Call Phil Prestidge for complete details. List price \$1.95 million.



**MAURICE MILJOUR**  
Office  
878-2365  
Tor. Line  
826-1030

Broker Associate



**NEED MORE ROOM?**

Four bathrooms & four bedrooms are just the beginning. Add a main floor family rm and recreation area to give you a home for the entire family. Must also mention central air conditioning and central vac. Absolutely worth a look! Contact listing agent Maurice Miljour, Broker Associate 878-2365, Hm. 876-4577.

Contact Listing Agent  
Maurice Miljour, Broker Associate

EXECUTIVE HOME WANTED - @ 2500+ sq. ft. with finished bsmt. and inground pool.  
WANTED A THREE BEDROOM BUNGALOW with full bsmt. and double garage with long closing date.  
All Discussions will be private and confidential regarding matters of your home. Contact Maurice.



*Lorraine Randall*

878-2365  
826-1030  
Res: 824-SOLD

**I WANT YOUR BUSINESS!**

**FOR ABOVE THE CROWD SERVICE**  
Whether Buying-Selling-Relocating across the country or just in your neighbourhood. Ask for me - **WANT YOUR BUSINESS!!!**



**RAINBOW ENDS HERE!**

Golden value in this colorful four bedroom family home! Discover treasure! Call Lorraine at 878-2365 (She's got the map!) Main floor laundry, main floor family, rec room. Careful - it's loaded!

ASK FOR *only*  
*Lorraine Randall* \$235,500.



**ADMIRABLE ISN'T IT?**

How builder has overlooked no details in this quality three bedroom beauty! Main floor laundry, two fireplaces, TIMBERLEA. You be the judge! To examine masterpiece

ASK FOR *only*  
*Lorraine Randall* \$216,500.



**THE PRICE IS RIGHT!**

Don't need to guess! Only \$229,500. for this four bedroom Dorset Park home. MAJOR ADDITION. Find prime time value! To see it for yourself. Call

ASK FOR *only*  
*Lorraine Randall* \$229,500.

**ATTENTION PLEASE PURCHASERS WAITING FOR**

—Bungalow  
—country home near North Milton/Georgetown  
Speak to Lorraine for confidential consultation.



**SANDRA A. BAILEY**  
Sales Representative  
BUS. 878-2365  
RES. 1-519-658-9040  
TOR. 826-1030



**ASSUMABLE AT 11%**

This 3 bedroom townhouse is waiting your inspection.  
- Eat-in kitchen  
- Living & dining combination good size  
- Patio doors to private yard  
- Finished recreation room  
Priced at \$149,800 - Call Sandra A. Bailey for a personal viewing.



**SPECIAL**

This 4 bdrm backsplit in Timberlea has so much to offer.  
- 50x150 lot size  
- double car garage  
- country kitchen  
- inground pool  
- central air  
- cosy fireplace  
Priced at \$282,800 - Call Sandra A. Bailey for a personal viewing.



**HAVE YOU HEARD**

You can move into this lovely 2 storey home in the spring. It offers many extras  
- Remodelled kitchen  
- Finished recreation room & wet bar  
- Central air  
- Professionally landscaped, large deck to enjoy it  
Priced at \$219,800. For a personal viewing please Call Sandra A. Bailey



**SCHOOLS-PARKS WITHIN WALKING DISTANCE**

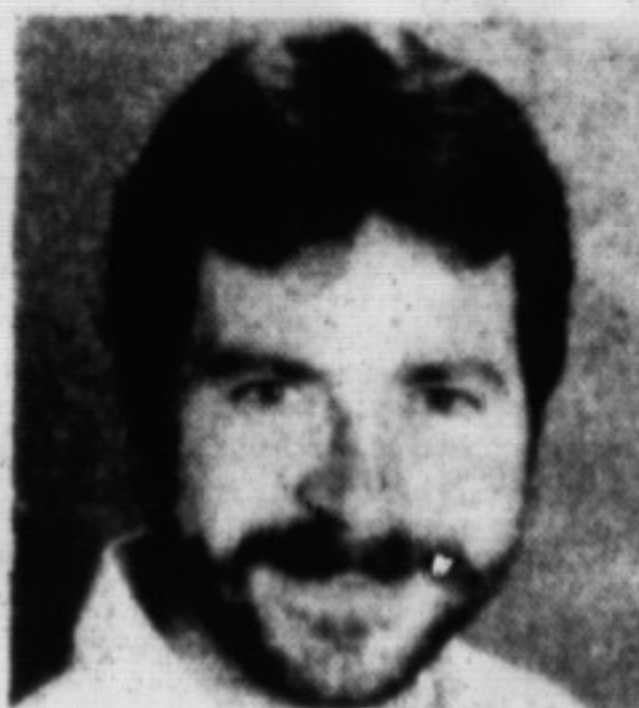
Makes this 3 bdrm townhouse so desirable. As well as eat in kitchen, new flooring, separate dining room, cosy fireplace, separate laundry room. A must to view. Please call Sandra A. Bailey. Price \$162,800.

**DESIRABLE-I'LL SAY**

Excutive home- 34-40 minutes from Mississauga-2 storey, 4 bedroom, 4 bathroom, 2 fireplaces. For a personal viewing please call Sandra A. Bailey, 826-1030 Tor Line. \$255,800.

**SPRING INTO ACTION**

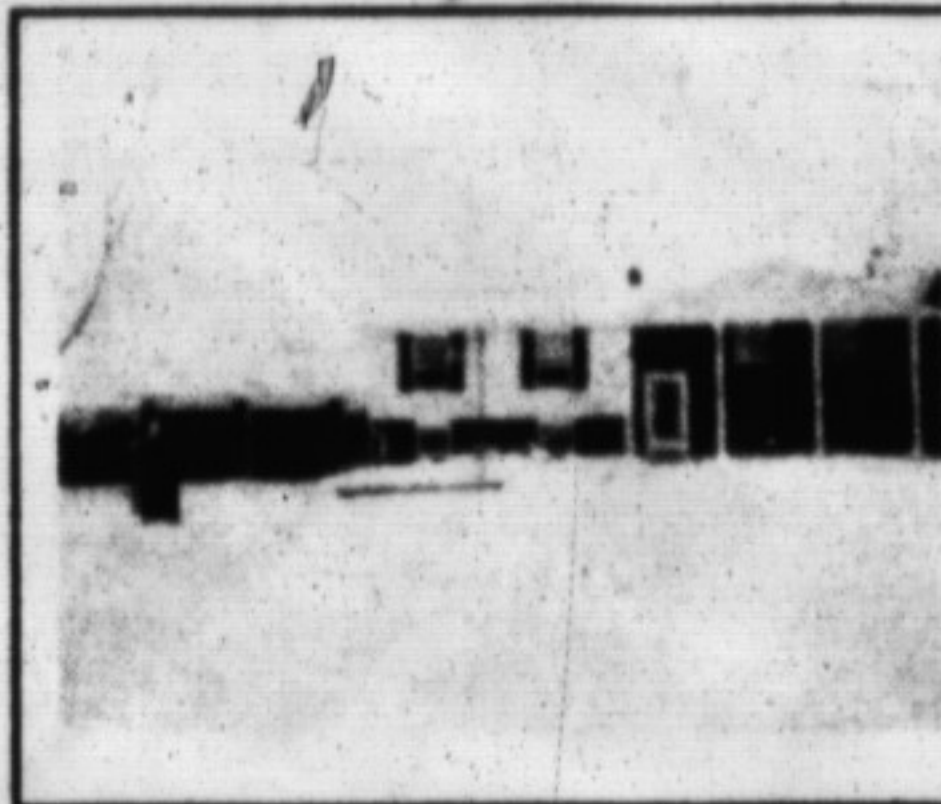
- View this 4 bedroom townhouse on a desirable area of Clarkson.  
- Close to schools/parks/shopping  
- There's more! Please call Sandra A. Bailey for a personal viewing. 826-1030 \$182,800



**CLAYTON HACKENBROOK**

OFFICE  
878-2365  
RES.  
875-0771

Associate  
Broker  
24 Hr. Pager  
878-2020  
Car Phone



**WELCOME TO PARADISE**

This beautiful home is located on a ravine lot approx 3/4 of an acre with a fantastic view of escarpment. I could write a book on all the upgrades and extras, including a greenhouse kitchen, walkout basement, designer oak cupboards, extensive renovations and a total of 5 bedrooms. Outside there's an oversized double garage, 16x32 inground pool and it's located just south of Milton For more details call Clayton Hackenbrook \$395,000.



**SUPER BUY FOR \$282,900.**

In this impressive country home located 15 mins. from Milton. Situated on approx. 1 acre and featuring a 16 x 34 inground pool, walkout bsmt. and a dble. garage. Inside there's a lrg. country kit., upgraded broadloom in L.R. & D.R., and a finished rec. with airtight stove. Start your tomorrows today. Clayton Hackenbrook.



**ACT FAST!**

This newly listed semi is located on a quiet cres. close to schools. You'll be impressed with the condition of this home which features a fireplace, neutral decor and a single garage. For further details please call Clayton Hackenbrook



I need an executive home in Timberlea around the \$300,000 range. For an evaluation with no obligation please call.