

Plants help chase away winter blahs

In the winter, one way to recapture the feeling of summer is to surround yourself with luscious greenery.

Each plant has its own basic need for light, humidity and water. The amount of water a plant requires depends on its size, the size of the pot, the environment and the time of year.

The intervals between watering for an individual plant vary with the season and changes in growing conditions. Fleshy-leaved plants can tolerate much drier conditions than thin-leaved varieties and a root cutting will take up much less water than a mature plant. With any plant, the larger the leaf surface and the more rapidly it is growing, the greater will be its need for frequent watering.

In winter, growth slows down, therefore overwatering should be avoided during this resting season. As the temperature and light intensity increase as winter progresses,

so does the need for water.

Plants in small pots and those which have not been repotted for some time need more frequent watering than those in large containers or ones which have been recently potted.

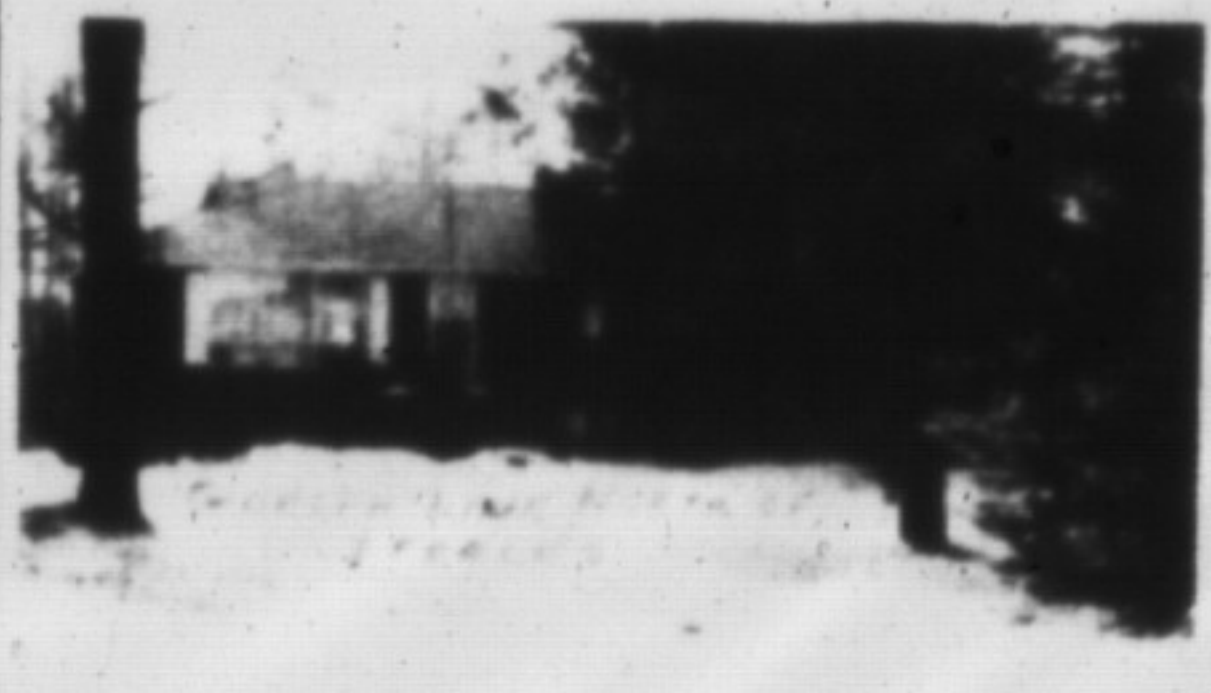
Plants in clay pots will need watering more often than those in plastic containers. Some plants need a partial drying period between watering, others do not.

The two most common causes for plant failures are overwatering and under-watering. Watering is a fairly simple task if you remember your plants should be potted in an appropriate, well-drained soil mixture.

The type of water you use will also affect your plant's ability to grow. Tap water from most systems has more chlorine in it than house-plants like, but if you let the water sit in an open container for a few hours, this gas will evaporate enough to make the water suitable.

A MEMBER OF THE REALTY FINANCIAL NETWORK

COLDWELL BANKER **BURNHILL REALTY LIMITED**
RESIDENTIAL REAL ESTATE



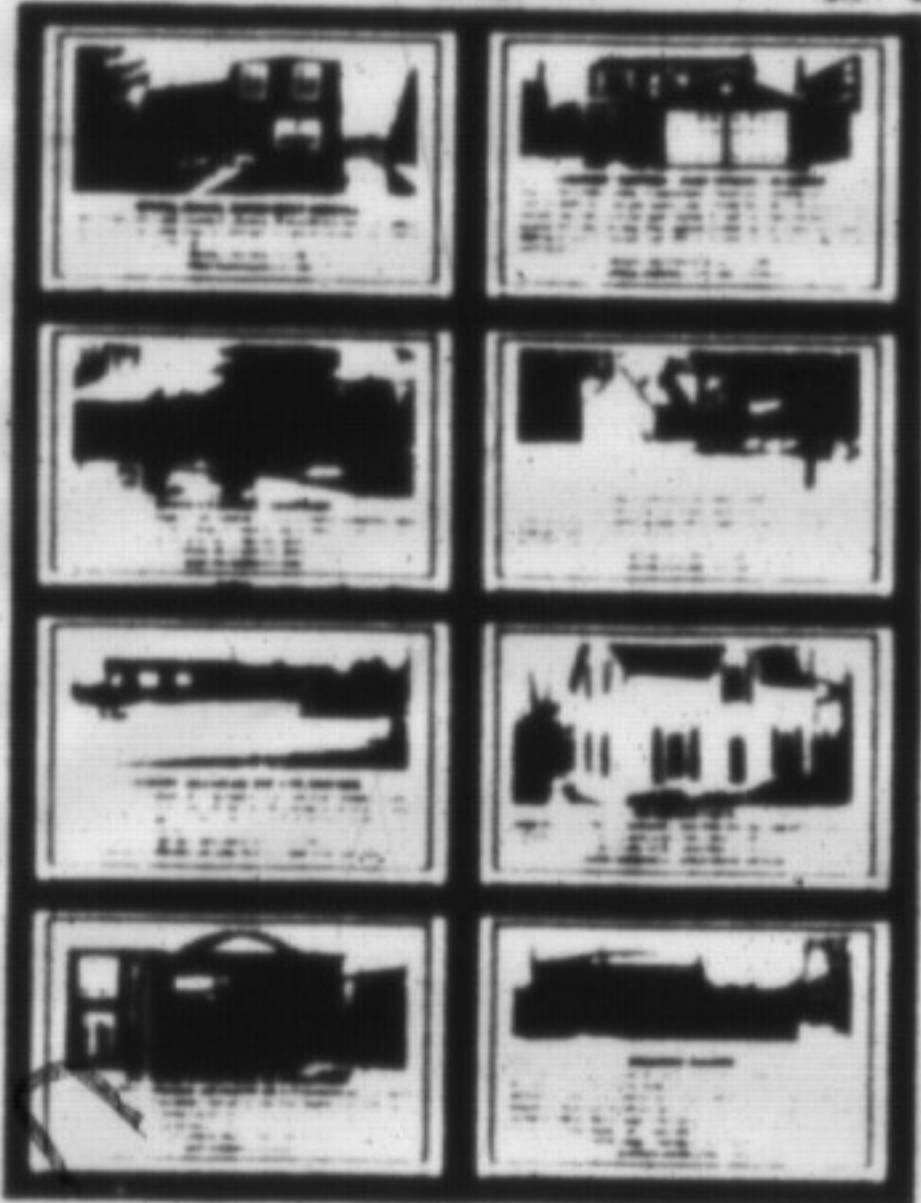
GUELPH LINE AND STEELES

Super bi-level ranch on 1/2 acre. 5/6 bedrooms or possible nanny/in-law set-up. FP & wood burning stove. Deck overlooks wooded area. Good well. \$254,000 or RENT \$1,500/mo. & utilities. Call HELEN MARSHALL, Sales Rep. (res.) 522-6909.

©1989 Coldwell Banker Residential Real Estate
Presented by An Independently Owned
and Operated Member of Coldwell Banker Affiliates of Canada Inc.
COLDWELL BANKER is a registered trademark of Coldwell Banker and Company

BEST HOMES

BEST HOMES

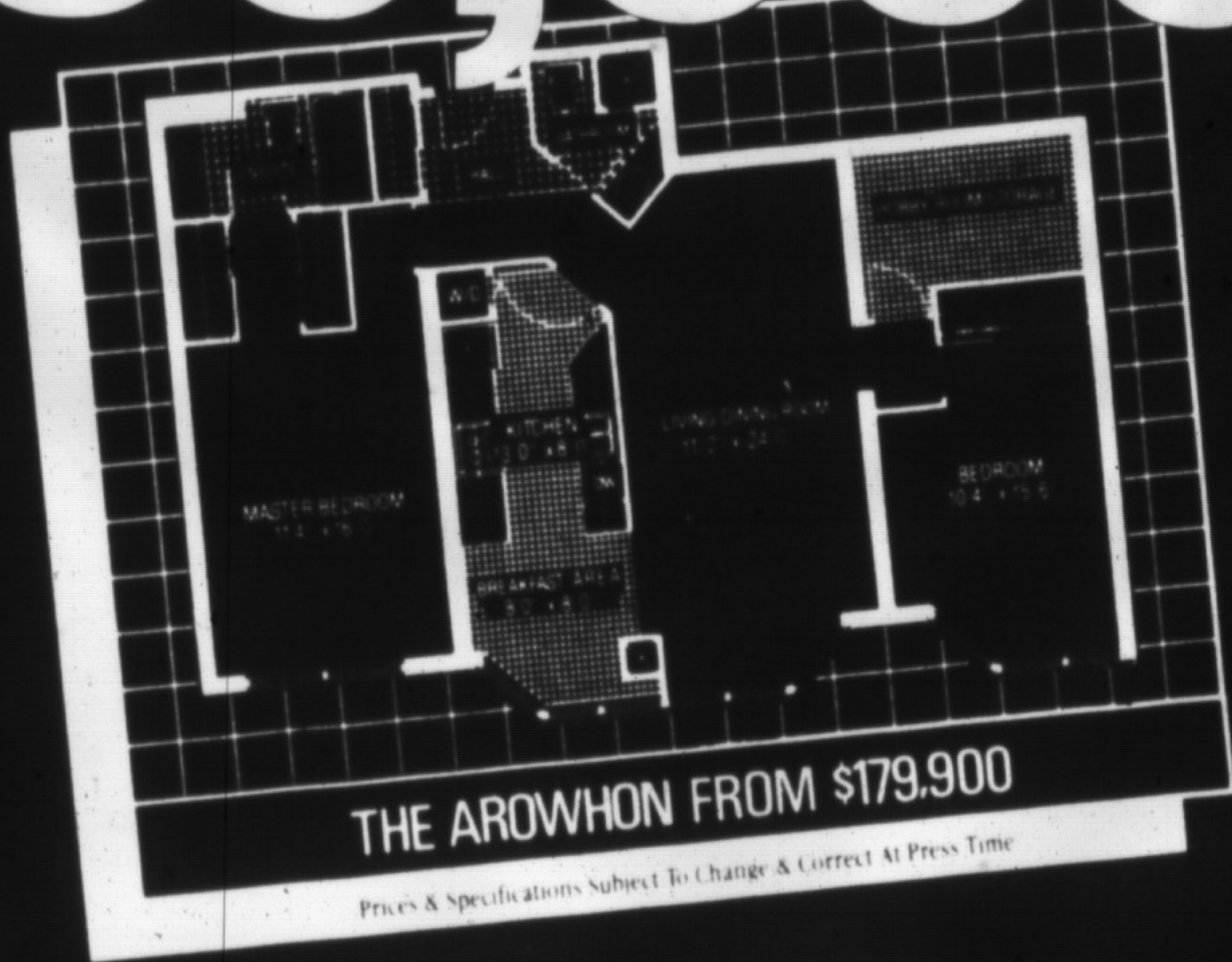


For advertising rates and information please call Andrea Downes at 878-2341

SAVE

\$60,000*

Interest paid on Deposits from Date of Purchase



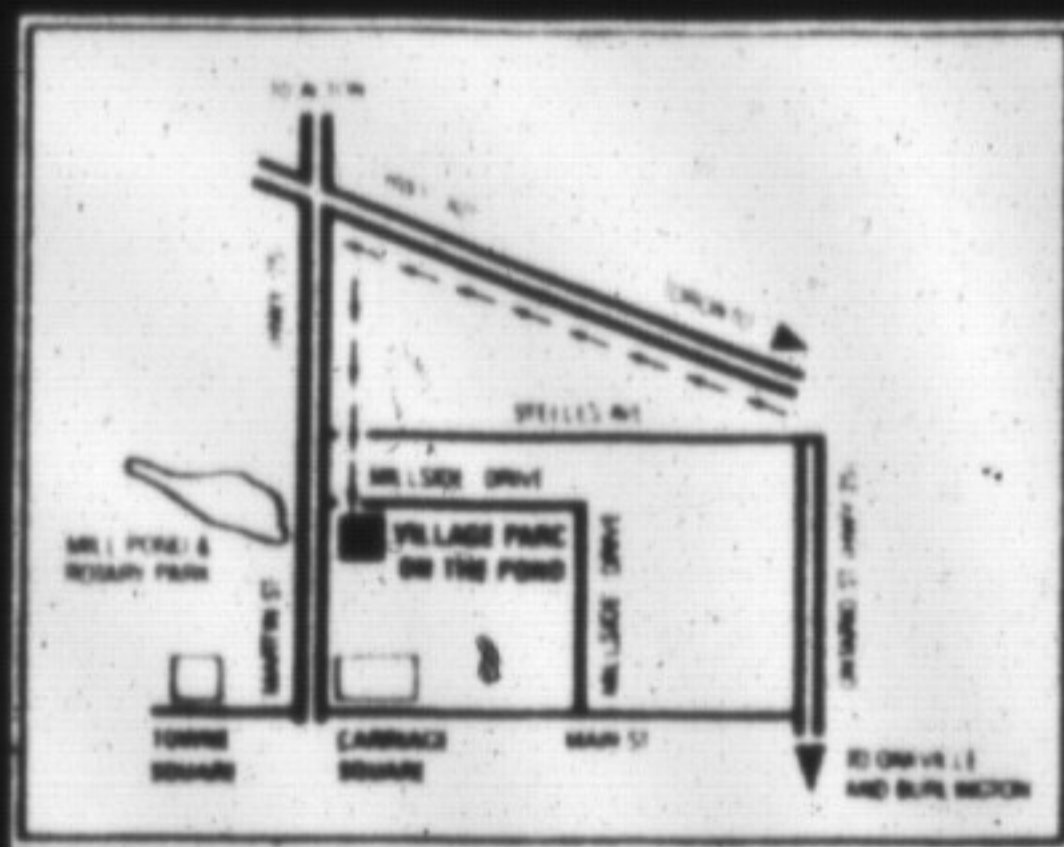
\$179,900

TWO BEDROOMS FROM

The Fastest Selling Condominium West of Toronto

Why buy a condominium in Mississauga when you can buy a similar residence in Milton for \$25,000 less? The advantages of living at Village Parc in The Pond in Milton are many, including:

- superb location with the GO Bus at your door and the GO Train to which you can walk in just minutes
- flexible deposit structure
- choice of paint and finishes from the day of purchase
- optional package with pool and spa
- central location, minutes and minutes from the best of both worlds.



*When you compare Village Parc to the average 1,300 sq. ft. in Mississauga, you can buy a comparable home for \$225,000 in Milton for \$179,900. It's a reality that this translates to a savings of up to \$45,000 over \$225,000 Village Parc in The Pond is a truly luxury in Milton.

*All measurements and specifications are approximate and subject to change without notice.

Sales Office Hours
Mon. - Thurs. 12 p.m. - 8 p.m.
Fri., Sat., Sun. 11 a.m. - 6 p.m.
Call Milton 875-0030
Toronto Direct 360-6441 FAX 878-7019

Village Parc
THE POND

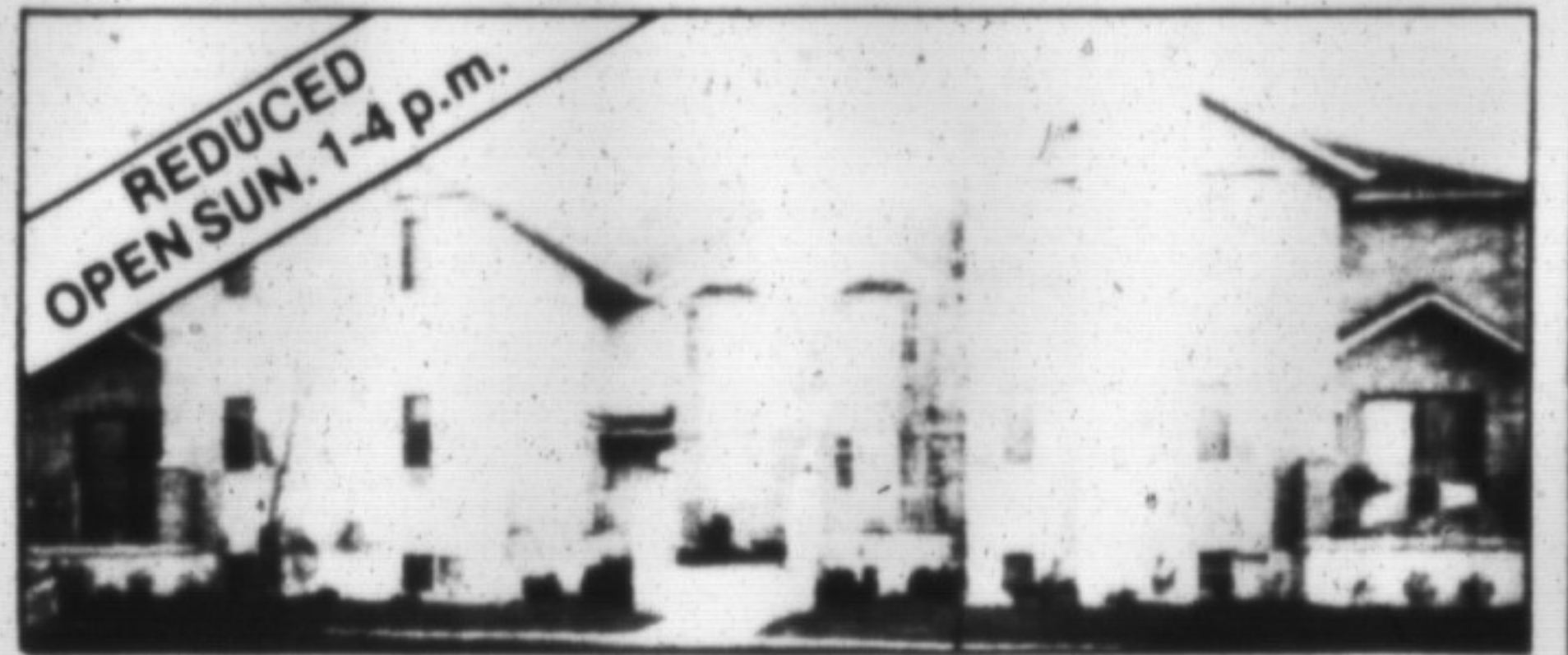
Exclusive Broker: Brethour Real Estate Corporation

KEN GIES

388-5133
REAL ESTATE LTD.



REDUCED
OPEN SUN. 1-4 p.m.



COMMUTER'S DELITE/RETIREE'S DREAM

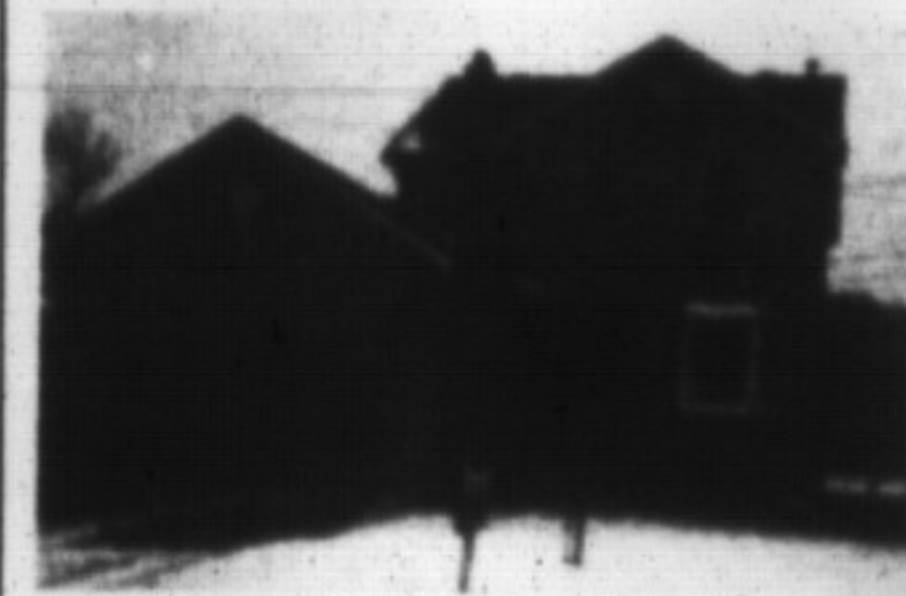
Private West Hamilton Mountain luxury condominium. 1 1/2 years new. 1,360 sq. ft., 3 bdrms., 3 baths, quality broadloom, oak railings and cabinets, central air, humidifier, roughed-in central vac., series 800 doors, wood-burning fireplace with brass doors, private patio, bay windows, neutral decor. Excellent value \$175,900. For appointment call days or evenings. 388-5133, Ken Gies.

Hwy. 403 to Mohawk Rd. East. Turn right onto Upper Horning Rd. and left on Elora Dr., unit 34.



Ilona Nicholson

TOWN LINE (CAMBRIDGE)



15 min. west of Milton. Lovely 4 yr old 2 storey home situated on a prime 1/4 acre lot, central vac., Mahogany trim, old kitchen cupboards, main floor laundry room 12'x24' deck, close to all amenities. \$195,900.

COMPARE COMPARE COMPARE!!!

12.8 acres located close to Campbellville & 401, stream, bush, open fields, pond & 1/2 mile jogging track. All levies paid. Priced right at \$329,000.

HORSE PEOPLE

Why are you still looking? Close to Mohawk or 401, 4 bdrm Century home & 2 bdrm sep brooms quarters. Paddock, 9 box stall bank barn, hot & cold water & so much more. For more info, call 854-9883.

HOMELIFE/REALTY CENTRE LTD.
YOU'LL FIND THE "GREENHOUSE"
LOCATED AT

3153 HURONTARIO ST., MISSISSAUGA
1 MILE SOUTH OF SQUARE 1

896-8966

SERVICE WITH INTEGRITY
IT'S WHAT EVERYONE'S LOOKING FOR!