

MILTON THIS IS YOUR ...

Marketplace

HALTON-PEEL STEAMATIC



STEAMATIC

- Air Duct Cleaning • Reduces air contaminants by 99%
- Air Duct Sealing • Reduction of dust and musty odours
- Air Vent Cleaning • Call Today!

ACTON 853-4451 MILTON 873-2469

TEL. 878-2341

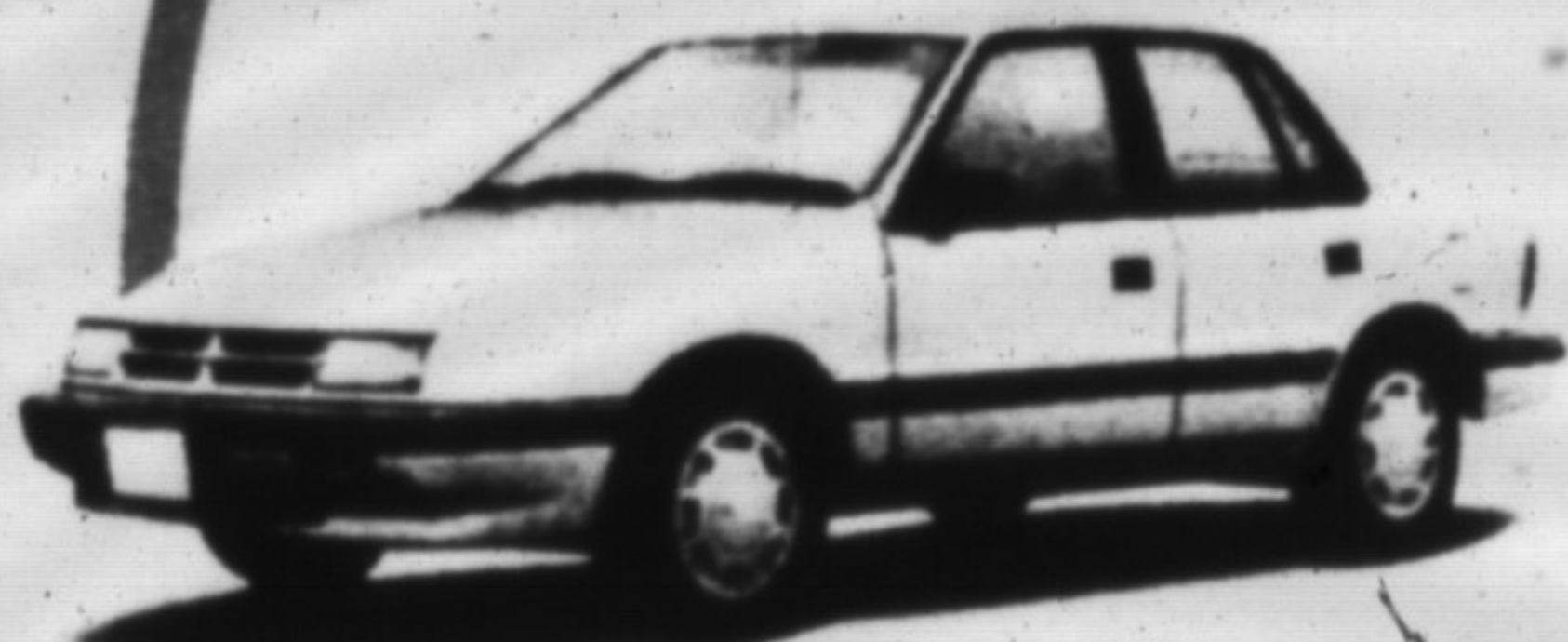
Friday, February 16, 1990

Milton, Ont.

MILTON CHRYSLER DODGE/ JEEP EAGLE

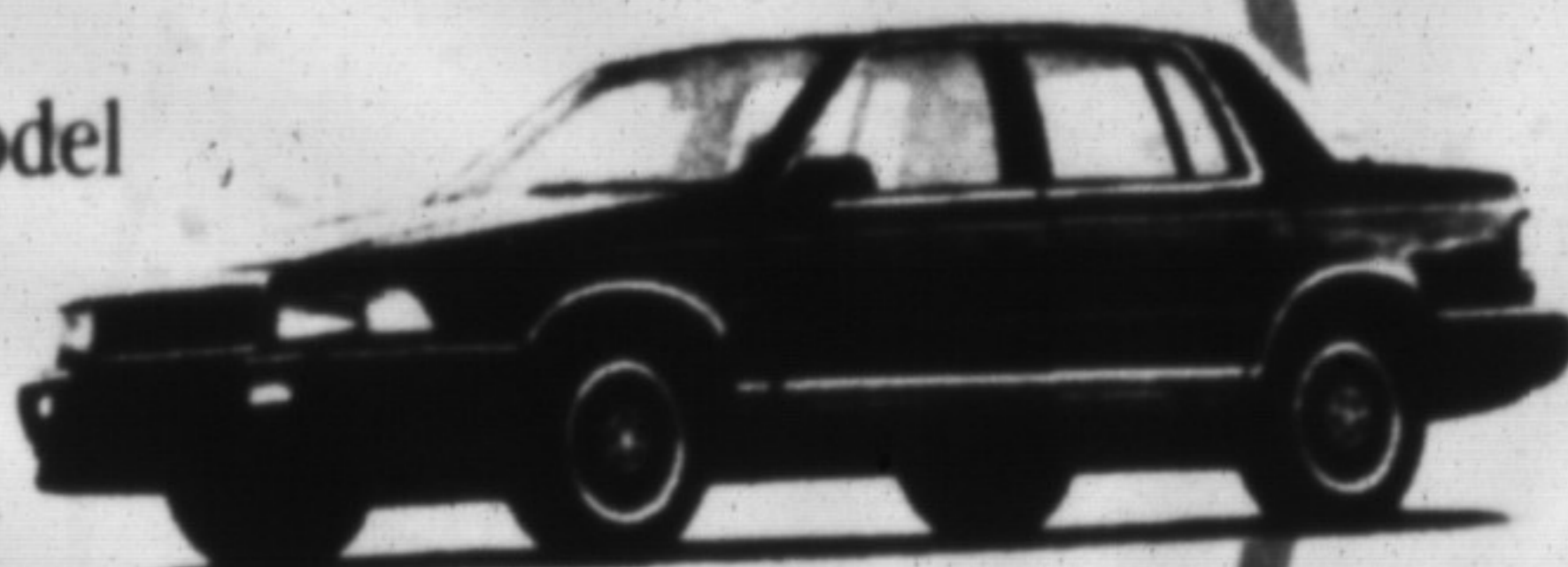


HAS THE GUARANTEED REBATE*



Plymouth Sundance/Dodge Shadow
\$750 GUARANTEED REBATE*
or choose 8.9% Factory Financing**

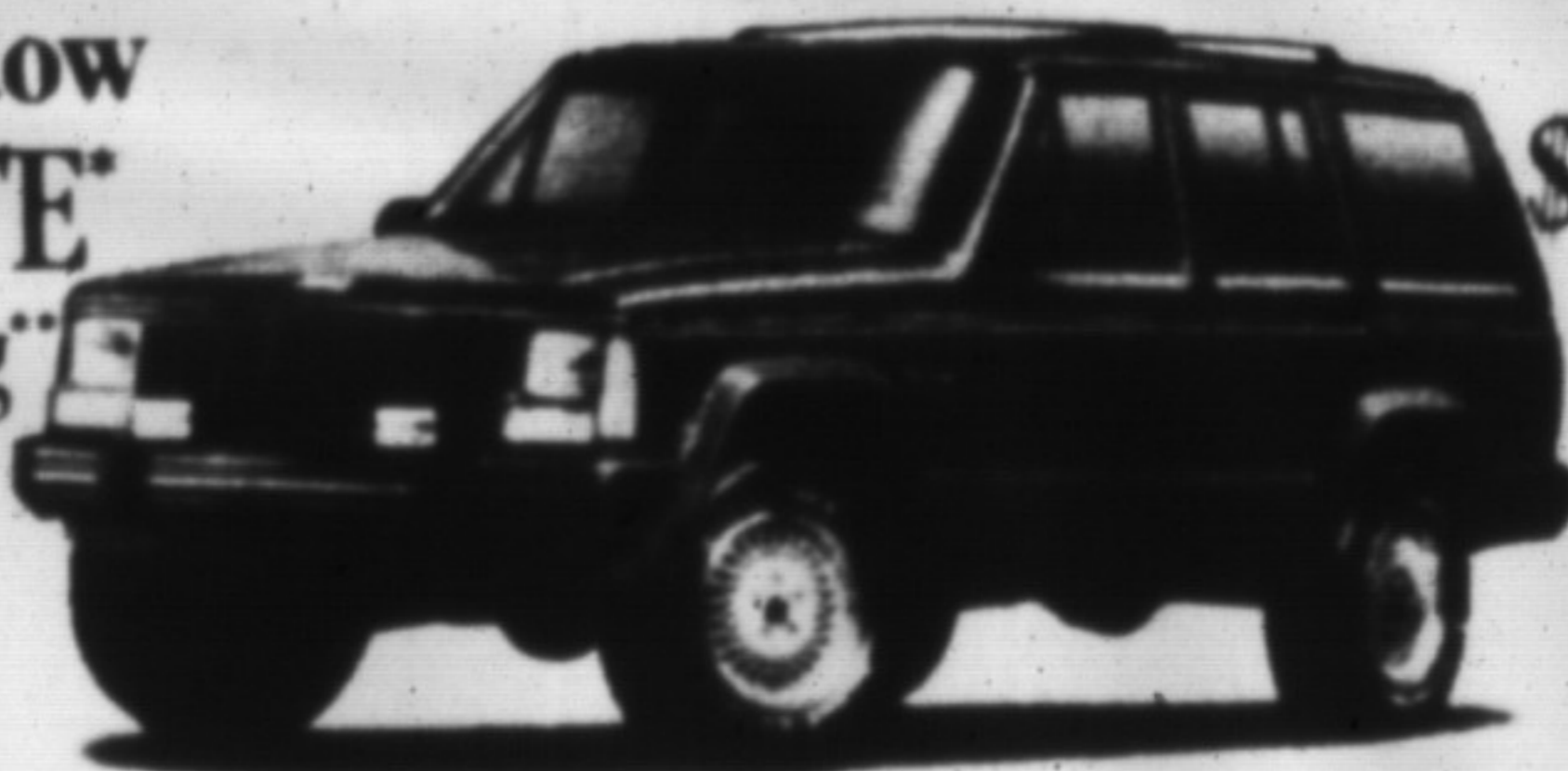
If the rebate goes up in the 1990 model year, Chrysler will send you a cheque for the difference!



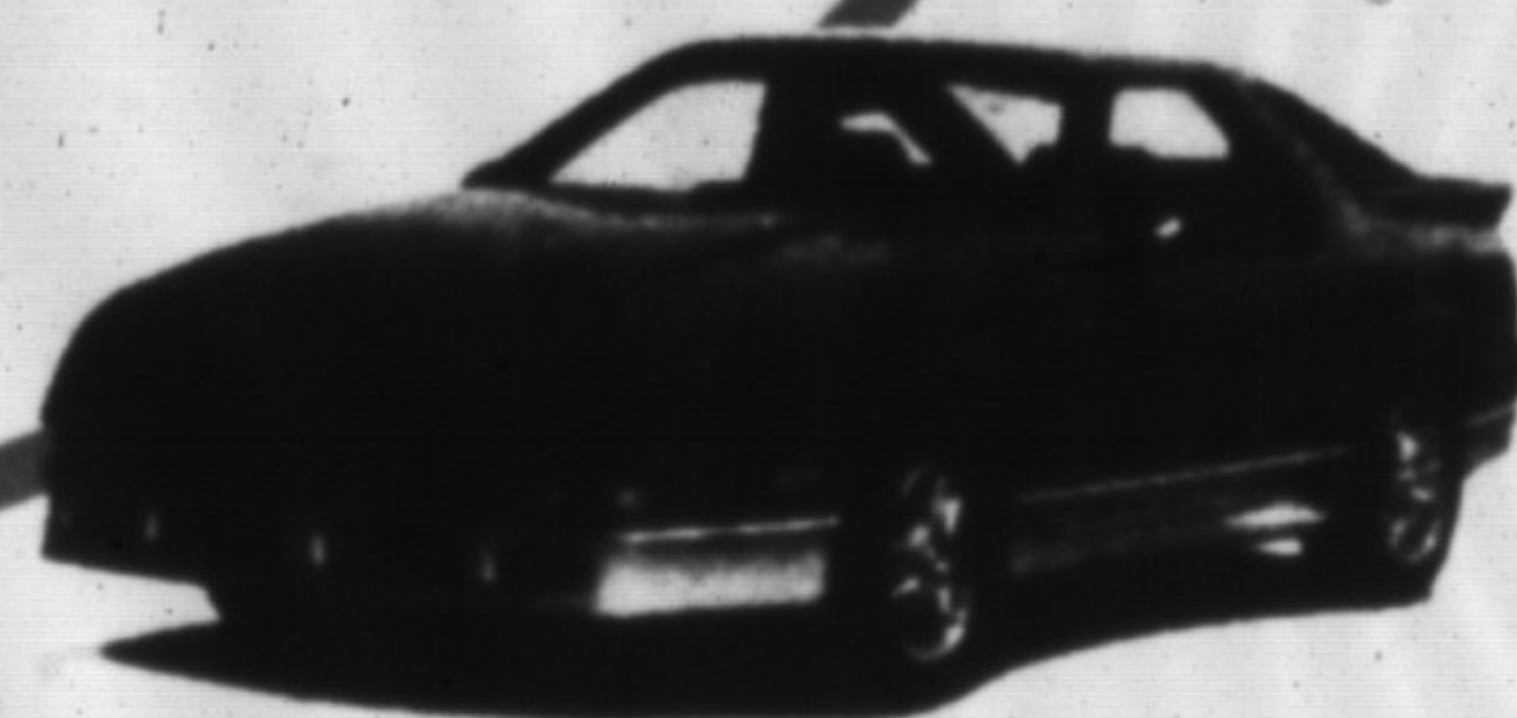
Dodge Spirit/Plymouth Acclaim
\$1000 GUARANTEED REBATE*
or choose 8.9% Factory Financing**



Eagle Summit
\$1000 GUARANTEED REBATE*
or choose 6.9% Factory Financing**



Jeep Cherokee/Wagoneer Ltd.
\$1000 GUARANTEED REBATE*



Chrysler Daytona
\$1000 GUARANTEED REBATE*
or choose 8.9% Factory Financing**

*Guaranteed period on selected vehicles expires September 30, 1990 and applies to 1990 models only.
**These offers are mutually exclusive and apply to purchase for personal use only. Qualified buyers choosing a reduced financing rate in lieu of cash rebate on selected vehicles are eligible for 6.9% financing over maximum 24-month term. For other selected vehicles, as well as longer term loans, other low financing rates are available as alternatives to cash rebates. See Dealer for details. Transactions are subject to Chrysler Credit Canada Ltd. approval on purchase and delivery at participating Chrysler Canada Ltd. Dealers from February 1, 1990 until such time as terminated by Chrysler Canada Ltd. Delivery must be taken from existing dealer inventory. Financing offers exclude fleet orders and retail lease vehicles. The offers cancel and replace any and all previous offers and may not be combined. Example: if the amount financed is \$10,000 on the purchase of an eligible vehicle for a term of 24 months, the financing rate would be 6.9% APR, with a monthly payment of \$447.27. Total cost of borrowing is \$734.48. Total amount to be repaid \$10,734.48. Assuming a rebate of \$2,000 as the alternative, should you choose a reduced financing rate instead of cash rebate, registration requires that the amount of the rebate not taken be included in calculating the cost of borrowing in order to arrive at an effective interest rate. In the example given, the cost of borrowing, including the rebate not taken, would be \$2,734.48, resulting in an effective rate of 79.9%. For 6.9% APR/36 mos. and 8.9% APR/48 mos. on selected 1989 vehicles, the following would apply, respectively to the preceding example: Cost of borrowing, \$1,431.06, \$2,151.20. Monthly payments, \$317.53, \$253.15. Cost of borrowing, including rebates not taken, \$3,431.24, \$4,151.36. Effective interest rates 24.87%, 22.26%. For 8.9%/24 mos., 9.9%/36 mos. and 10.9%/48 mos. financing rates on selected 1990 vehicles, assuming a rebate of \$1,000 as the alternative, the following would apply to that same example: Cost of borrowing, \$953.36, \$1,589.20, \$2,382.56. Monthly payments \$456.39, \$322.20, \$257.97. Cost of borrowing, including rebate not taken, \$1,953.36, \$2,589.20, \$3,382.56. Effective interest rate: 19.62%, 17.79%, 16.62%. Buyers must pay for transportation, license and other fees such as registration. Retail lease vehicles are eligible for cash rebates only. Special leasing rates, as an alternative to rebates, are available on selected models. See Dealer for details.



81
ONTARIO
ST.



TODD LANDRY



DOUG MAINPRIZE



RAY DUNBAR



RICK PELLART

878-8877