

BEST HOMES

The Canadian Champion

Milton, Ontario

February 7, 1990



GOING, GOING, GONE! ONLY \$299,000.
This 3 bedroom custom country home on a 1/2 acre lot is a rare commodity in today's housing market. If you are looking for a superior country home, close to all conveniences please call.

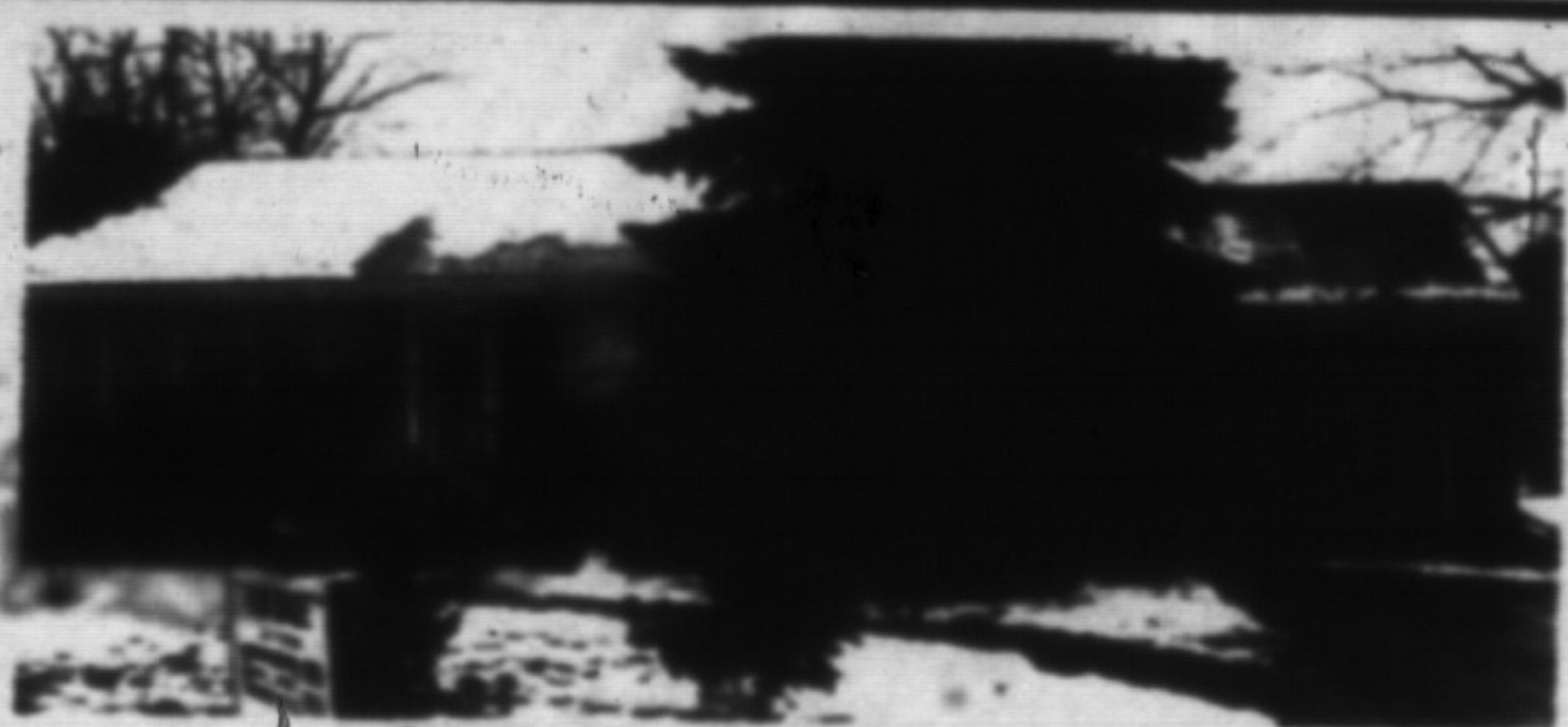
ROYAL CITY REALTY LTD.
ROSS RUNNALLS 876-1156



LAURIER "HUTTON" ROBERTSON CRESCENT

Magnificent 4 bdrm. home, 4 washrooms, "Enormous Greenhouse Kitchen", main flr. family rm., den and laundry rms., French drs., 12' x 25' pegged oak entranceway, oak spiral staircase, central air and vac. Inground pool and all luxuries that make life easy. Plus separate 2 bdrm. apt. or in-law/nanny suite. 2800 sq. ft. main flr. but just under 5000 sq. ft. finished living space, all backing onto parkland.

RE/MAX MILTOWNE REALTY CORP.
CAROLE STONHILL 876-2365, 876-4913



CHARLES STREET CHARMER

Quality built brick bungalow with ravine lot is just steps from downtown! Living & dining rooms enhanced by large windows & cozy fireplace. Super rec. room with garden w/o. cent. air, cent. vac. ... Must be seen!

ROYAL LEPAGE REAL ESTATE SERVICES Ltd.
JEAN THOMSON 878-8181



TALK ABOUT ATTRACTIVE

This is a very unique home with a main floor family room with an air tight stove, a formal dining room and living room with a fireplace, a master bedroom with a fireplace and much more on your own private country acre. Listed "For Sale" at \$469,900. Call

ROYAL CITY REALTY LTD.
WAYNE CASSON 876-1156



COUNTRY AS FAR AS THE EYE CAN SEE

All brick ranch bungalow 3+ 1 bedrooms, 4 pc. and 2 pc. ensuite, country kitchen, main floor family room with floor to ceiling fireplace, enclosed summer room, dble. car garage. Lot 150 x 150, close to Oakville, Miss. & 401. Asking only \$299,000. Please call.

RE/MAX MILTOWNE REALTY CORP.
FREDA LAWRENCE 878-2385, RES. 878-4880, TOR, 826-1030



NO CONDO FEES

Large lot (70' x 180'), 3 bedrooms, main floor laundry, upgraded windows, sliding glass doors off kitchen to patio. Check the price \$174,900.

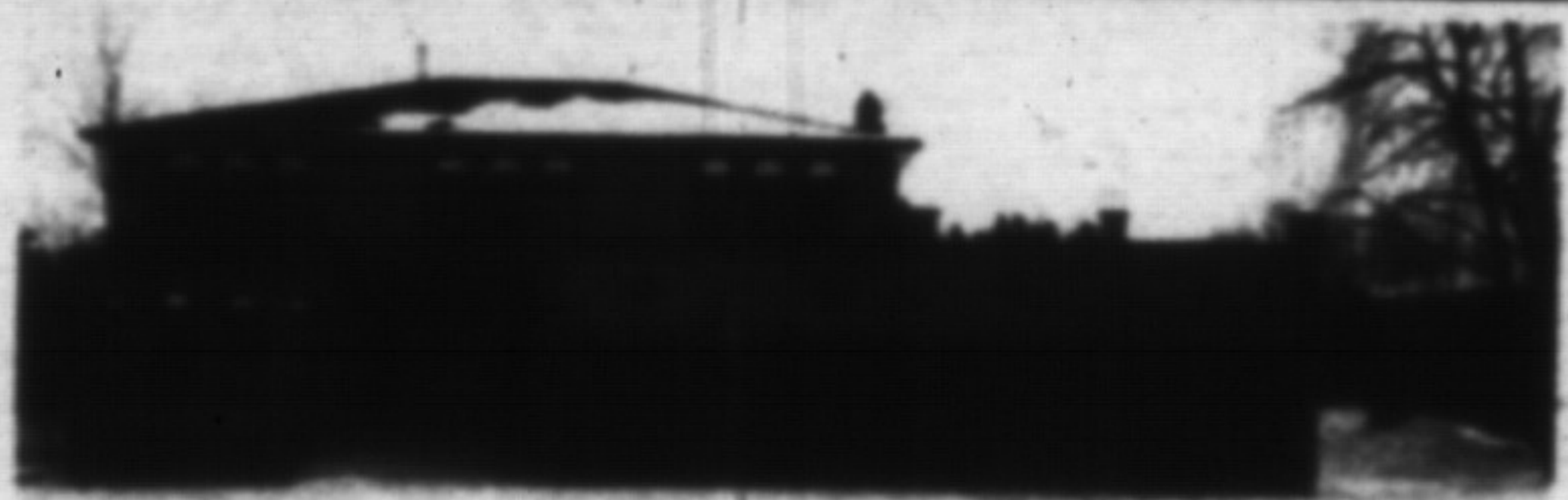
CENTURY 21 GOLDEN REAL ESTATE
DIANE GIBBONS or JAMES SNOW 878-8495



BACKING ONTO PARK IN TIMBERLEA

Only \$242,000.00. Affordable split level link offers 3 bedrooms plus, an extra large kitchen, main floor family room and a main floor laundry room with exit to back yard, also has walkout to double garage and much, much more. Don't miss your opportunity to see this.

NRS MILLPOND REALTY INC., REALTOR
JEFF WRIGHT 875-2677



COUNTRY MANOR

On a tranquil, treed 2 acres. Gorgeous new custom built 3600 sq. ft. home features ceramic & oak hardwood floors thruout. Huge kitchen with an abundance of solid oak cabinets. As you open the doors you are greeted with a magnificent foyer graced with circular oak staircase. Very impressive! Centrally located to Milton, Mississauga & Brampton. 3 min. to 401. Asking \$509,000. For more exciting details, call Heather 854-2294.

COUNTRYWIDE CAMPBELLVILLE REALTY INC.
HEATHER ASHBEE 854-2294