

THE ONTARIO MARCH OF DIMES OFFERS PRACTICAL SUPPORT TO PERSONS WITH PHYSICAL DISABILITIES TO OVERCOME EVERYDAY BARRIERS.

BE A PART OF THE SOLUTION. JOIN THE THOUSANDS OF PEOPLE ACROSS ONTARIO WHO GIVE TO THE MARCH OF DIMES.

60 OVERLEA BLVD
TORONTO, ONTARIO
M4H 1B6

PLEASE GIVE AS GENEROUSLY AS YOU ARE ABLE.

WHO SAYS A DIME DOESN'T GO VERY FAR ANYMORE?



ONTARIO MARCH OF DIMES

Developing the ability in Disabled Adults

MOTHERS-TO-BE



DATE: FEBRUARY 12th
PLACE: BRIARWOOD INN
OAKVILLE
TIME: 7 p.m.

A BABY SHOWER

If you are expecting an addition to the family you will want to attend. Look what WELCOME WAGON has in store for you:

- Demonstrations
- Exotic gifts for every Mom-to-be
- Special Displays
- Numerous Door Prizes
- FREE ADMISSION

MILTON MOTHERS ARE INVITED TO JOIN US!

EXHIBITORS: * CANADIAN BABY PHOTO
GOLDS GYM * MB FASHIONS * ROYAL LEPAGE
MILUPA * TORONTO DIAPER * STORK NEWS
GYMBOREE * TO LOVE A CHILD * U.S.C.
AQUAFINE * DISCOVERY TOYS * HUGGIES

For a free invitation to our upcoming show or more information please call EDEN 827-5806

OTHER SHOWERS BEING HELD:

TORONTO
FEB. 18th
663-4359

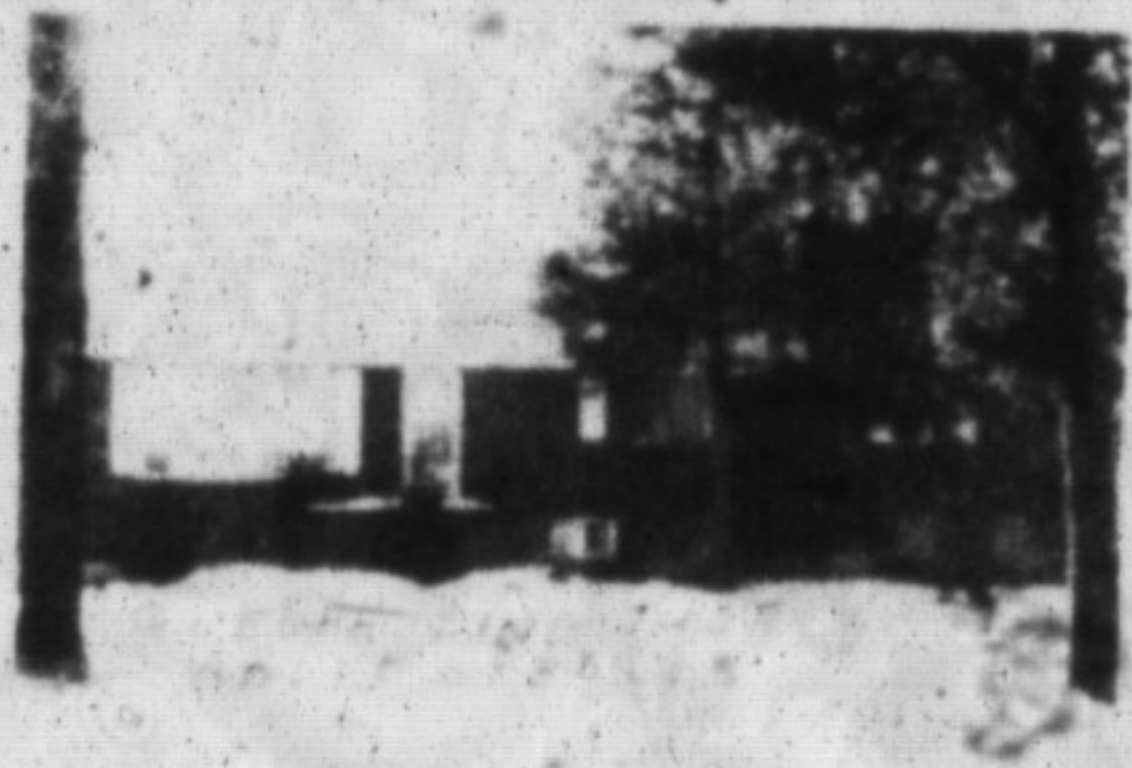
SCARBOROUGH
APRIL 8th
364-9010

COLDWELL BANKER

BURNHILL REALTY LIMITED
RESIDENTIAL REAL ESTATE



639-2693
795 Brant St.



FOR SALE OR FOR RENT

Get away from the hustle. Terrific bi-level ranch on 1.2 acre, backing onto wooded area. Spacious rooms, good well. Close to "GO" Bus & Hwy. 401. \$254,900 or \$850/mo. + 1/2 utilities. HELEN MARSHALL, Sales Rep. (RÉS.) 522-6909.

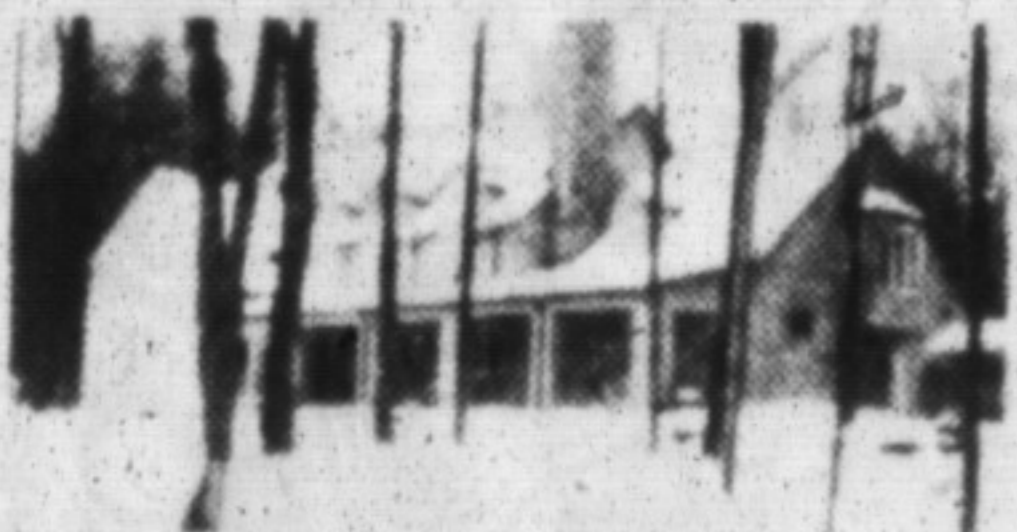
RE/MAX

Miltowne Realty Corp.
Campbellville
854-0777

Tor. Line: 542-0166
Res.: 854-9833



Anne Taylor
Associate Broker
Town and Country



CAMPBELLVILLE MANOR HOUSE
\$895,000

A magnificent English Manor estate home nestled on 5+ acres of scenic escarpment land south of Campbellville. Five bedrooms plus nanny's quarters, extensive use of natural textures, a fine executive home within an hour of Toronto.

38+ ACRES PUSLINCH \$650,000

Magnificent property of great natural beauty designated rural definite estate lot potential with easy access to Hwy 401. Rolling wooded slopes, three ponds, rustic bi-level home with eight walkouts, pool. Professional standard barn with foaling stalls, dressage ring, paddocks. For the serious horseman and/or investor.



MUSKOKA SETTING IN KILBRIDE \$589,000

Have your home and cottage in one package! Lovely 8+ acre property with good road frontage, two natural ponds, small barn. Stunning and unique professionally designed open plan home with 4 bedrooms, two story living room with beamed cathedral ceiling, interesting nooks and crannies. If you like something out of the ordinary, take a look!



COMMERCIAL-CAMPBELLVILLE \$575,000

Tremendous potential — 3 apartments, 3 store fronts, potential for more and (important!) Plenty of parking central Main St. location with good income flow.



COMMERCIAL-CAMPBELLVILLE \$299,000

Get in on an investment property on the ground floor. Apartment plus five rentable retail spaces in central village business location.



OLD MILTON

For lease, lease with option or purchase. Three bedroom solid home backing onto open space and walk to Main St. \$189,000 for sale or \$1,200 to rent.

OAKVILLE FREEHOLD EXECUTIVE TOWNHOMES

Under construction soon to be completed. Walk to Glen Abbey Golf Course. Good access to Toronto via QEW. Range between \$255,000 and \$280,000.

BUILDING LOT—
ABERFOYLE \$129,900

Scenic one acre with good stand of evergreens, small river runs through property good access to Hwy 401.

17 YEARS AS A LEADER IN THE FIELD



The Fastest

Selling Condominium West of Metro

PRE-CARNIVAL PRICES

Village Parc on the Bend is proud to be participating in the Milton winter carnival featuring skating and winter fun, happening on Sunday February 12, 1990.

But now, come to Village Parc for our special pre-carnival prices. You can save up to \$60,000. When you compare square foot price for square foot price, why pay upwards of \$220 square foot in Mississauga when you can buy a comparable home at Village Parc in Milton for \$160 square foot!

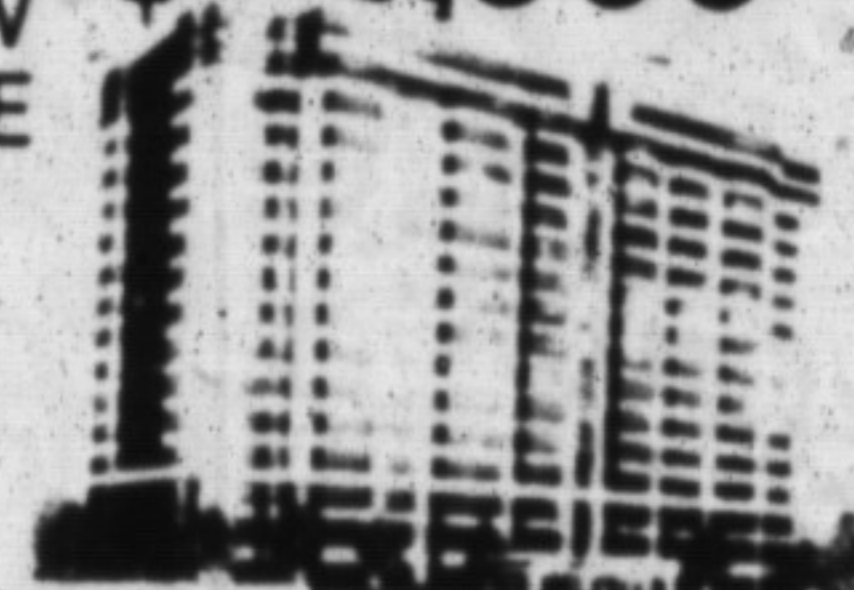
At Village Parc, you get: • a superb-pastoral location with the GO Bus at your door and the GO Train to whisk you downtown in minutes • fabulous suite designs, beautifully finished • a flexible deposit structure • interest paid on your deposit from the date of purchase.

Now, come take advantage of our fabulous pre-carnival values!

PHONE: 875-0030 Milton
360-6441 Toronto line

Village Parc

SAVE \$60,000

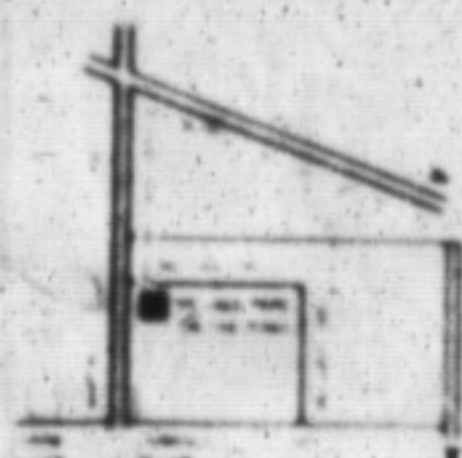


JUST ONE ONE BEDROOM UNIT

\$149,900

TWO BEDROOM HOMES FROM \$179,900

FOR US ONLY



ASK ABOUT OUR SPECIAL LIMITED TIME OFFER \$1,200 BONUS!