

Lifestyle

Wednesday Jan. 31, 1990

RAINBOW TAXI LTD.
MILTON
 ANYTIME, ANYWHERE
 • Airport Specialists
 • Parcel Delivery
 • Flat Rates Available



875-3015 or 875-3016

Community Notebook

Playing Around: An opportunity to meet other mothers and their preschoolers can be found at St. David's Church on Guelph Line in Campbellville every Monday morning from 9:30 to 11. There is no charge for this play group for preschoolers and refreshments are provided. To find out more call 854-0239.

Create a Basket: Try your hand at making a woven basket to take home from Crawford Lake Conservation Area. Sydney Fitzpatrick will teach the art of basketry beginning at 1 p.m. on Sunday, Feb. 4. The Conservation Centre is open from 10 a.m. to 4 p.m. For information call Crawford Lake at 854-0234 or 336-1158.

Girls of Summer: It's time to get ready for the summer and the local girls T-Ball and softball leagues can help. Registration for both programs will be held at Milton Mall Friday, Feb. 16 from 5 to 9 p.m. and Saturday Feb. 17 from 9 a.m. to 5 p.m. and again on Saturday, Feb. 24 from 9 a.m. to 5 p.m. T-Ball is open to girls born 1978-1984. Softball is open to girls born 1973-1980.

Tour the World: Free tickets can be reserved in advance for this Saturday's Kids News program at Milton Public Library. The theme is "Around the World in 60 Minutes" and will include a various film presentations beginning at 2 p.m. To reserve call 875-2665.

HRCA Inaugural Meeting: Halton Region Conservation Authority members will be officially sworn in at the organization's 1990 Inaugural Meeting on Thursday, Feb. 15 at 7:30 p.m. The meeting will be held at the HRCA administration office, 2596 Britannia Rd. W., Burlington. R.S.V.P. by February 9, 336-1158.

Tinkerbell Needs Time: Training is provided to volunteers at Tinkerbell Nursery where there is an urgent need for community support. Those who can spare a couple of hours a week to work with developmentally handicapped youngsters are asked to contact Penny Willes at 878-9737.

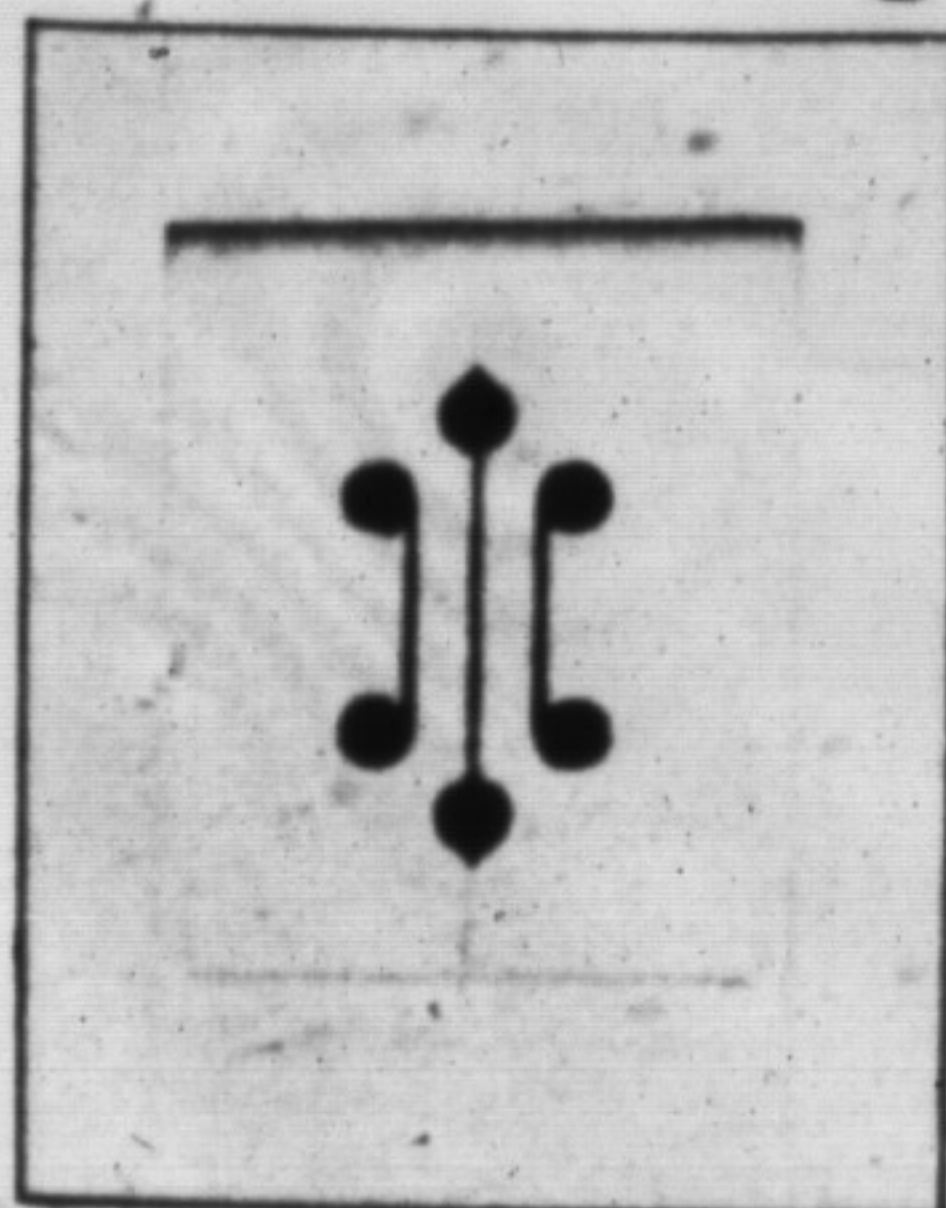
Have a Big Show: In an effort to increase public awareness of the Big Sisters organization, representatives are available to present a slide show describing the program. Groups interested in having a presentation should contact the Big Sisters Association of North Halton at 878-0378.

Blind are Unique: The theme for this year's White Cane Week is "The Uniqueness of Blindness". The week runs from February 4-10 and focuses on access to information. The aim of the week is to promote a greater understanding of the specialized skills needed by blind people to compensate for their vision loss. The week is co-sponsored by the Canadian Council of the Blind and the Canadian National Institute for the Blind (CNIB).

Employer Award: Nominations are sought for the best employer of the year (1990) by the planning sub-committee for National Access Awareness Week, June 10-16. The award is meant to honour employers who go out of their way to hire and promote people with disabilities within their companies. Persons wishing to make nominations are asked to call or write to: The Canadian Hearing Society, 3034 Palstan Road, Suite 201, Mississauga, Ontario L4Y 2Z6 or 896-7667.

Win prizes, enter...

Heritage Hunt



1.



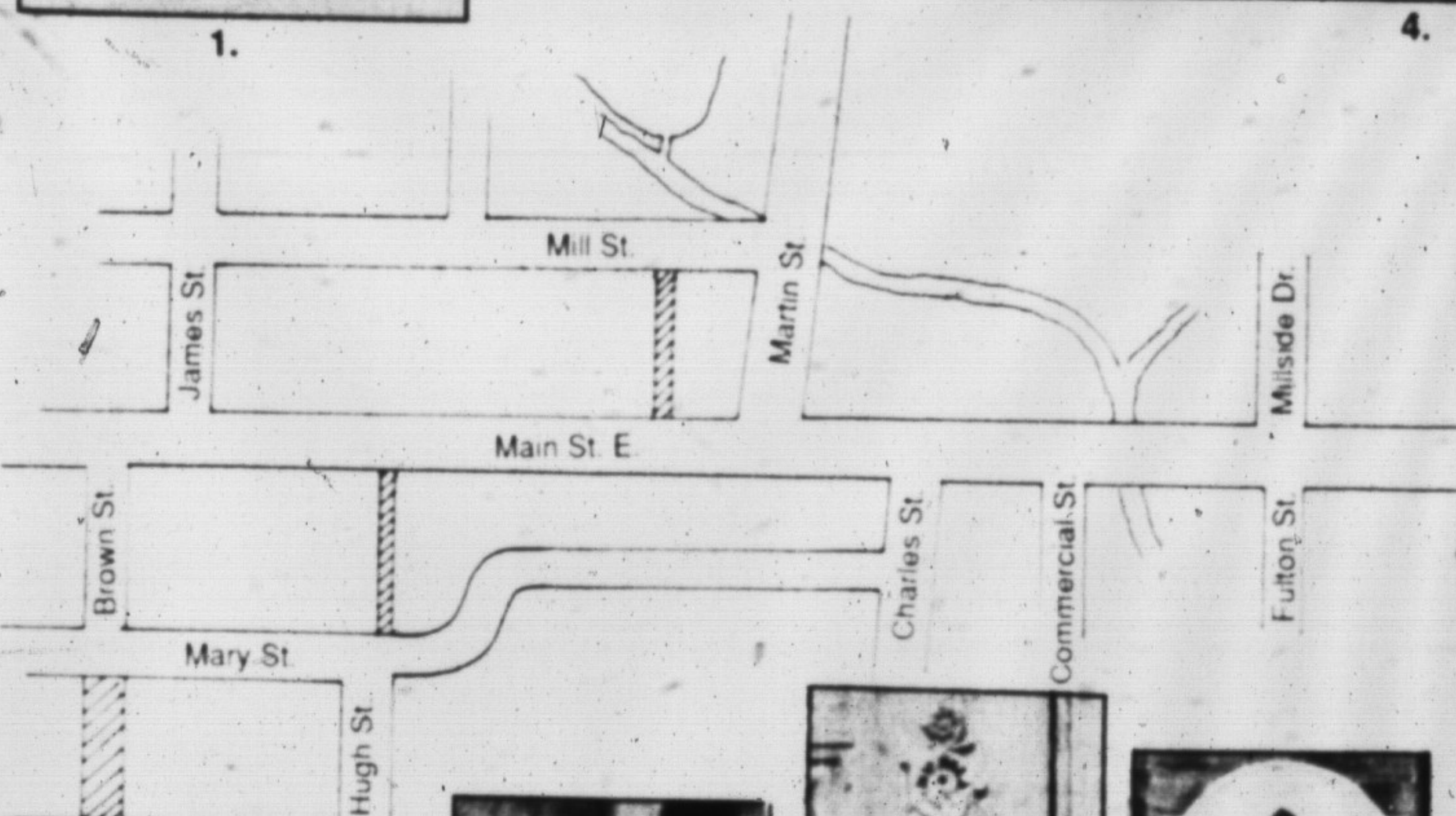
2.



3.



4.



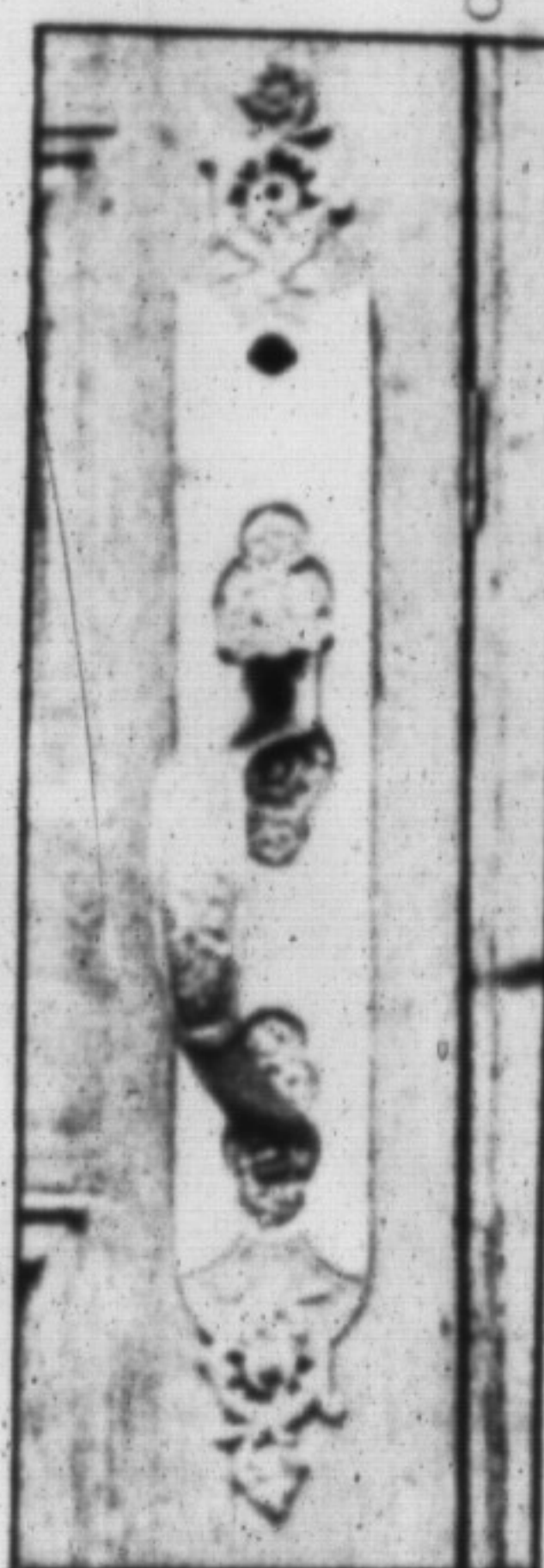
5.



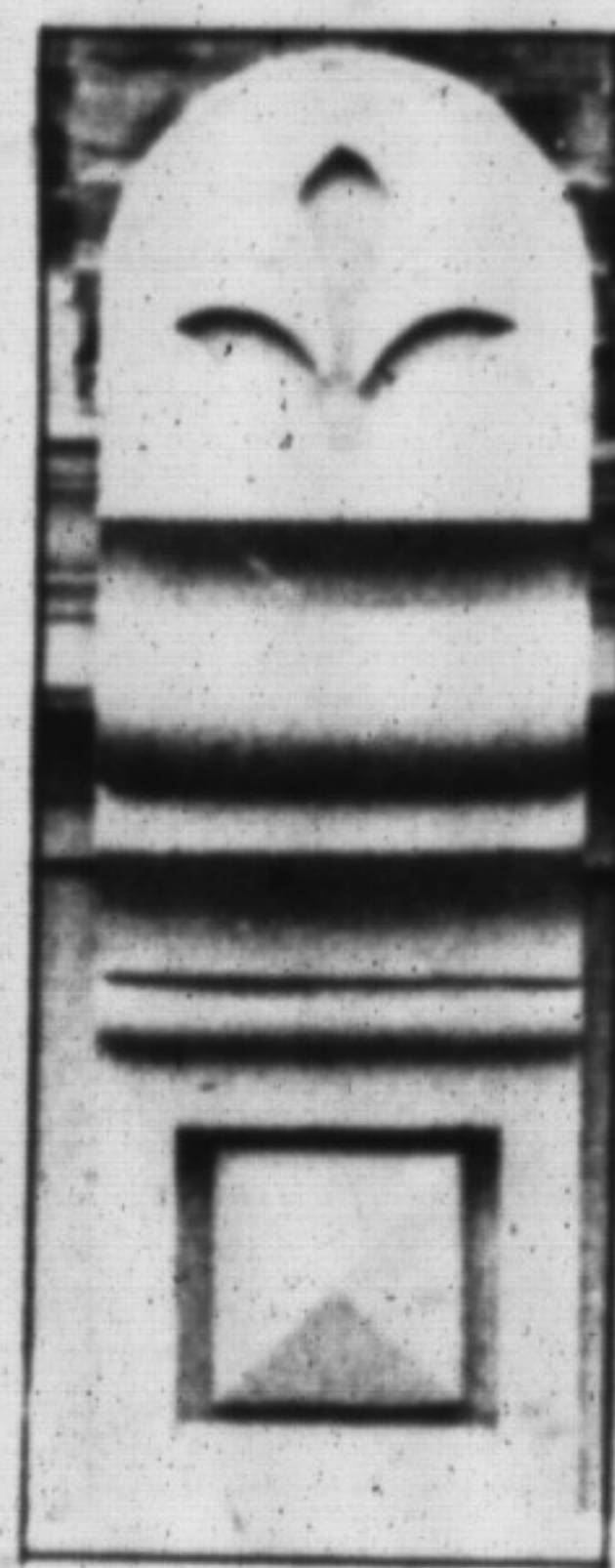
6.



7.



8.



9.



10.

Heritage Hunt rules

• You don't need to be an expert on Milton's architecture or history to play. Simply identify the buildings where the above pictures are located by name or address.

• Submit your completed form to The Champion office, 191 Main St. E., by noon Friday, Feb. 16. Your name will be entered in a draw for one of four prizes for adults (dinner gift certificates) and children (prizes to be announced).

• Contest answers will be posted at a photo display at Hugh Foster Hall Sunday, Feb. 16 from 2-4:30 p.m. during heritage celebrations. The draw takes place at 3:30 p.m.

• The Town of Milton's Local Architectural Conservation Advisory Committee (LACAC), the Milton Historical Society and The Champion challenge you to discover your community's heritage. Have fun!

HERITAGE HUNT '90 ENTRY FORM

Name	Phone	Age
1.	6.	
2.	7.	
3.	8.	
4.	9.	
5.	10.	

Mail/Deliver to Champion office before Friday noon Feb. 16

FOR THAT SPECIAL VALENTINE

Place your Valentine Message in the February 14, 1990 edition of The Champion.



NAME _____
 ADDRESS _____
 PHONE _____

MESSAGE

\$5.00 (max. 15 words)
 Just drop your message in our mail slot with your payment, and we will be happy to place your message.

The Champion

191 Main St.
 878-2341