

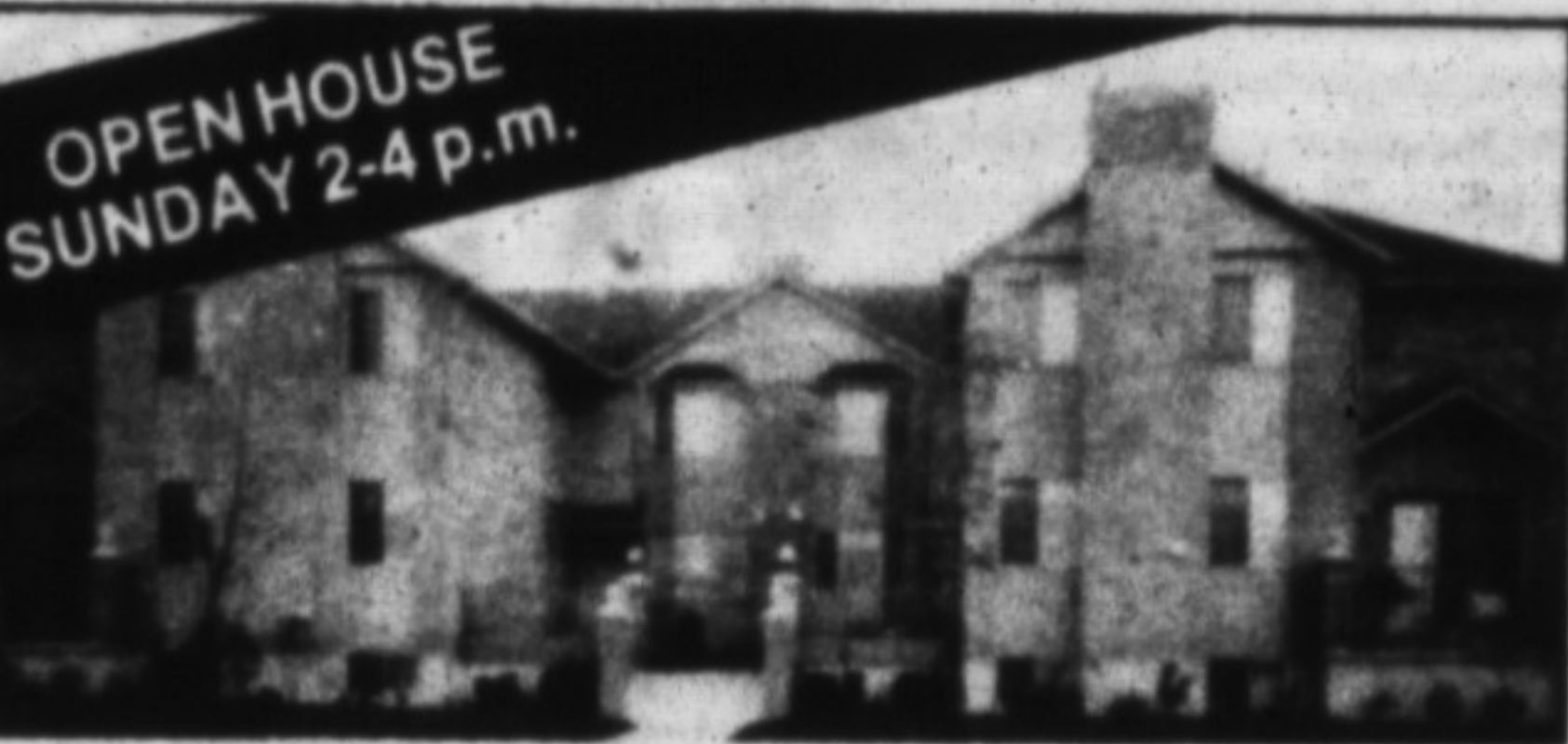
In the Matter of Subsection 2 of Section 35 of the Assessment Act
Extension of Time for Return of Annual Assessment Rolls

Pursuant to section 35 of the Assessment Act, I hereby further extend to the 27th day of February, 1990, the day upon which the assessment rolls for the year 1989 are required to be returned pursuant to the provisions of the said Act in all municipalities and localities in the Province of Ontario except the City of Welland and the municipalities located in the Regional Municipality of Sudbury, the County of Kent, the County of Prince Edward and the County of Renfrew.

And notice is hereby given that the final date for lodging a complaint with the Assessment Review Board in respect of any assessment contained in the assessment rolls that are required to be returned on the 27th day of February, 1990 is further extended to the 20th day of March, 1990.

Remo Mancini
 Minister of Revenue

KEN GIES 388-5133 **R**
 REAL ESTATE LTD.



OPEN HOUSE SUNDAY 2-4 p.m.

PRIME ACCESS TO HWY. 403
 Private West Hamilton Mountain luxury condominium, 1 1/2 years new, 1,360 sq. ft., 3 bdrms., 3 baths, quality broadloom, oak railings and cabinets, central air, humidifier, roughed-in central vac., series 800 doors, wood-burning fireplace with brass doors, private patio, bay windows, neutral decor. Excellent value \$179,900. For appointment call days or evenings. 388-5133, Ken Gies.

Hwy. 403 to Mohawk Rd. East. Turn right onto Upper Horning Rd. and left on Elora Dr., unit 34.

Miltowne Livery

Limousine Service

Super Stretch and Formal Limousines

- Airport Service
- Weddings
- Sight-seeing Tours
- Sports Events
- Concerts/Theatre
- Business Trips
- Night on the Town
- Corporate accounts welcome



"A special service for a special occasion"
 878-3351

JAY PEAK, VERMONT
THERE IS A SNOW DIFFERENCE!



When it comes to snow, we're #1 in the East.

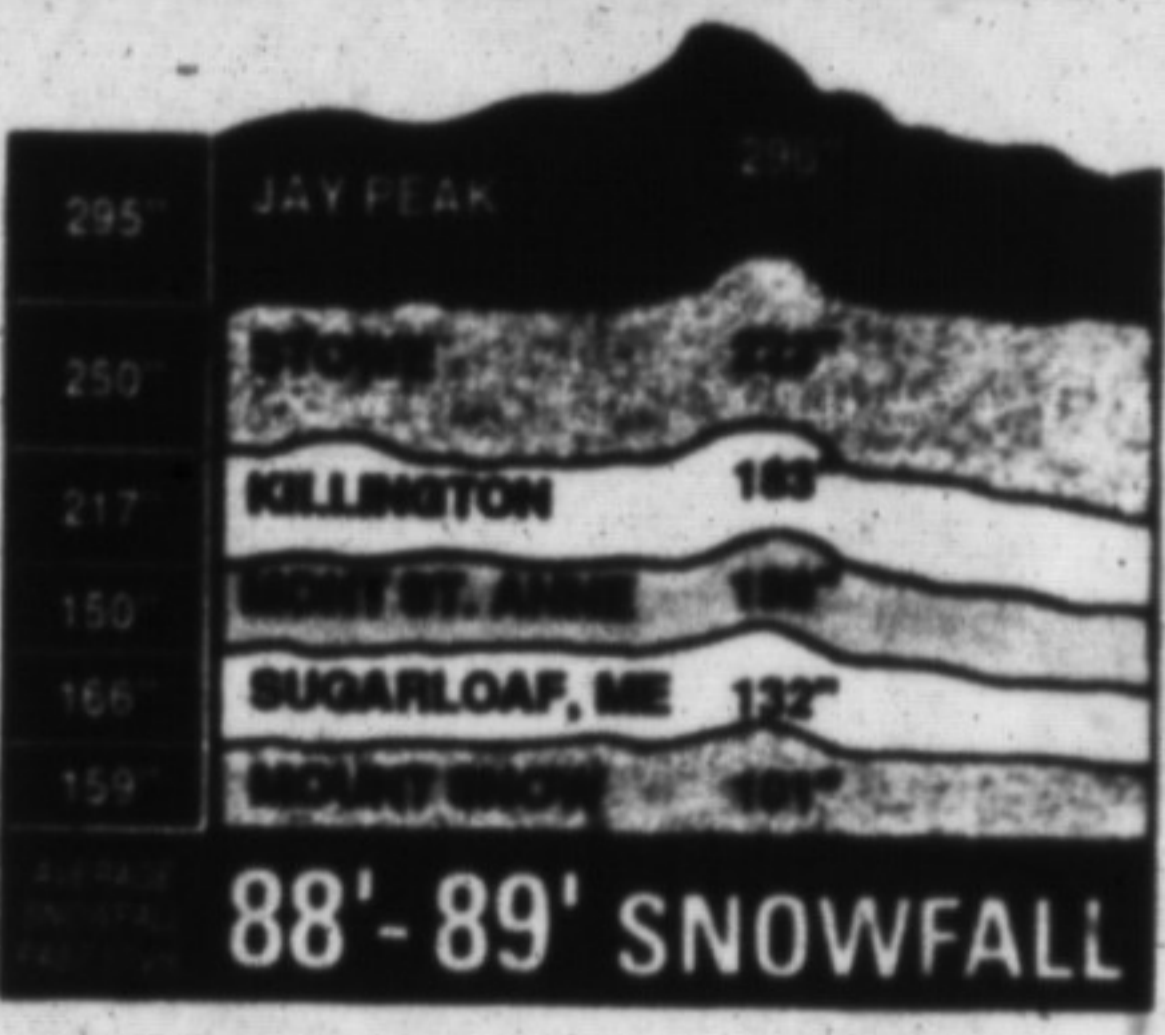
In addition to great skiing the Jay area offers accommodations to please everyone. There are full service hotels, modern motels, private chalets, charming country inns, rustic bed and breakfasts, elegant condominiums and economical dorms. Some of the inns in the Jay Peak area are rated among the best in the State of Vermont. Jay's greatest asset is its friendly people who extend to you their warmest hospitality in true Vermont tradition. They're one reason why so many skiers return, year after year. That, and all that snow!

The Jay area offers an array of fine dining from elegant gourmet to romantic candlelight, from nostalgic New England country inns to casual carry outs. Every appetite can be more than satisfied at Jay Peak.

CALL 1-800-654-5754
 and our Jay Area Accommodations Expert will answer all your questions.

Write for our **FREE BROCHURE.**
 Jay Peak Centre Reservations, Box 242, Jay, Vermont 05459 or Call 1-800-654-5754

NAME _____
 ADDRESS _____
 CITY _____
 PROVINCE _____
 P.C. _____



- Closest Vermont area to Canada.
- Canadian \$ at par specials throughout the area.
- Low January rates begin Jan. 1, 1990.
- Over 80% snowmaking coverage.
- 2,150 vert. ft. 50 miles of varied terrain.
- Numerous children ski & stay free offerings.
- Free learn to ski programs midweek in January.

HYUNDAI OWNERS
 For Service Call
873-1818



MacLachlan College & Preparatory School

MacLachlan is a private co-educational school providing elementary and secondary education in a small class setting.

The school places priority on a highly personalized form of education providing the opportunity for each student to realize his or her full potential.

Applications are now being accepted for September placement in the Upper or Lower School.

Registration and transportation enquiries:
 337 Trafalgar Road, 844-5928

Oakville

STOP SMOKING LIGHT LASER is the safe, fast and easy way to quit.

ONE TREATMENT is all you usually need.

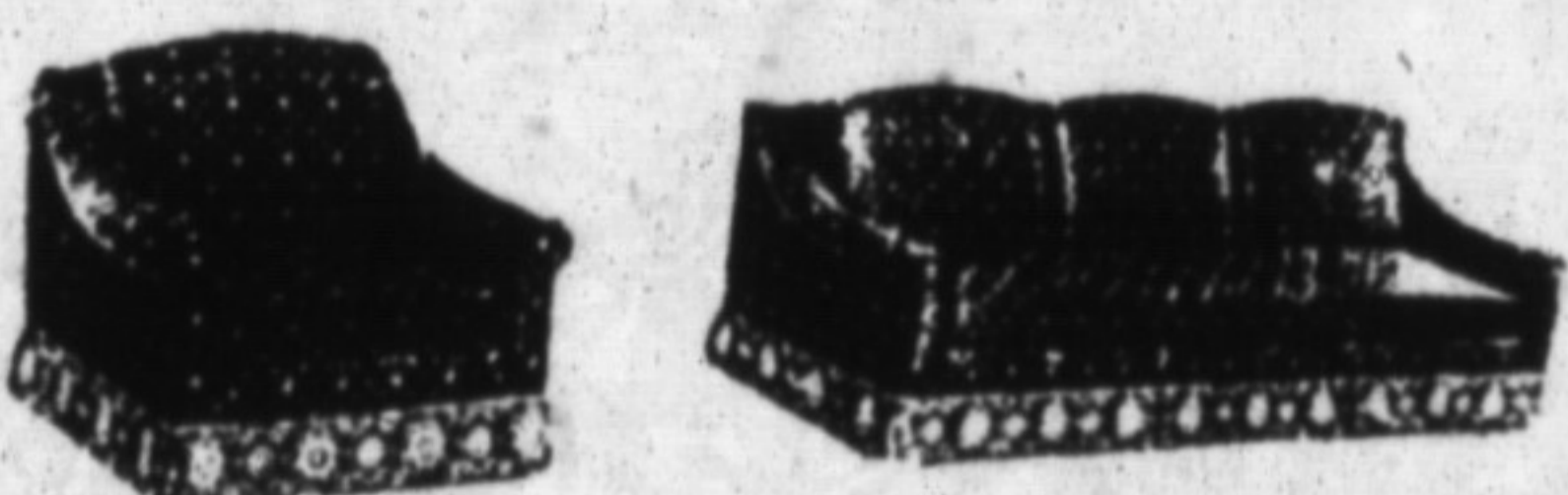
only \$100⁰⁰

For an appointment call:
The Light Laser Way

878-5029

Evenings or Weekends
 6 p.m. to 10 p.m.

REUPHOLSTER AND SAVE \$\$\$



Big Big Savings From Our In Stock Rolls of Fabrics
THOUSANDS OF YARDS IN STOCK

- Camper & Boat Cushions
- Budget Terms
- Antique & Modern
- Reasonable Labour Rates
- Restyling
- Rebuilding

- ☑ 5 Year warranty on workmanship
- ☑ Free pick up & delivery
- ☑ Free in home estimates



FOR FREE IN-HOME ESTIMATE CALL

5183 14th Sideroad, **878-5322**
 Milton

Country Gallery

ART & ANTIQUES

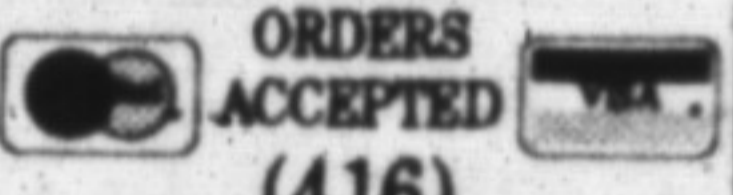
presents: **ROBERT BATEMAN**



The Air, The Forest & The Watch
 Regular '485"
 Our Price

\$350⁰⁰

OPEN 7 DAYS A WEEK
 (SUNDAYS 12 - 5)
 CUSTOM FRAMING



(416)

26 Main St. W., Milton (Next to L.C.B.O.)

875-1751

POLARIS
 Believe It.

Snow Check

Don't be disappointed —
 Guarantee yourself delivery on a new 1991 Polaris by reserving it now.
PLUS SAVE AT LEAST \$200!

DOWN PAYMENT \$200 SNOW CHECK DOWN

1991 POLARIS MODELS

- Indy StarLite \$2,949 +
- Indy Lite \$3,799 +

Your \$200 non-refundable down payment by March 31, 1990 will reserve the 1991 Polaris Indy StarLite or Indy Lite of your choice PLUS you'll receive a FREE Indy Lite Jacket.

Complete the purchase by October 15, 1990 and your Polaris dealer will deduct your \$200 down payment plus a Snow Check Down Payment BONUS of an additional \$200 from the suggested retail price at the time of delivery. Polaris will guarantee availability of the model you choose.

In addition to the Snow Check Down Payment Bonus, you will also qualify for any programs in effect at the time of delivery, which are offered by Polaris or your Polaris dealer, providing the purchase is completed by October 15, 1990.

OFFER EXPIRES MARCH 31, 1990

*Snow Check Bonus payments are not available to principals or employees of Polaris Industries, authorized Polaris distributors, or authorized Polaris dealerships.
 *Polaris Industries Inc. • At participating dealers • Void where prohibited by law.
 • Manufacturers suggested retail prices do not reflect freight, set-up or taxes.
 Snowmobiles purchased under the Snow Check program must be registered in the customer's name as shown on the Snow Check.
 Maximum of 3 Snow Checks per customer.

YOU'RE THE WINNER WHEN YOU BUY FROM

THE RACER'S EDGE

32 BRONTE ST. S., MILTON, ONT. L7Y 1Y8 PHONE (416) 878-8212 TOR (416) 826-0407



Believe It.

THE NO FEE HASSLE FREE RRSP

RICHARDSON GREENSHIELDS

Investment advisors to Canadian enterprise and enterprising Canadians

Bill Pope
 Account Executive
 845-7147

281 Robinson Street
 Oakville, Ontario L6J 8G8