

RE/MAX

Miltowne Realty Corp.

"Locally owned and operated"

22 Ontario St. South 878-2365

RE7 - The Canadian Champion, Wednesday, January 17, 1990

Above the Crowd!



FREDA LAWRENCE
OFFICE
878-2365
TOR. LINE
826-1030
RES.:
878-4860



FAMILY PLEASIN

Make your family happy with this 4 bedroom home backing onto parkland. Features include greenhouse kitchen, dishwasher, main floor family and family room. Central air and garage. Asking only \$299,000.



MOVE FAST

The bungalow is partially built on a 111 x 199 foot lot just south of Carleton Place. Features include main floor laundry and family room, fireplace, all wood kitchen cupboards, central air & vacuum, double garage. Asking \$283,000.

BUILDER SAYS:
"Will build to suit"
On a 111' x 266' lot.
For particulars call Freda.



Gail Pullen
878-2365 Res.
878-0110 Office
826-1030 Tor. Line



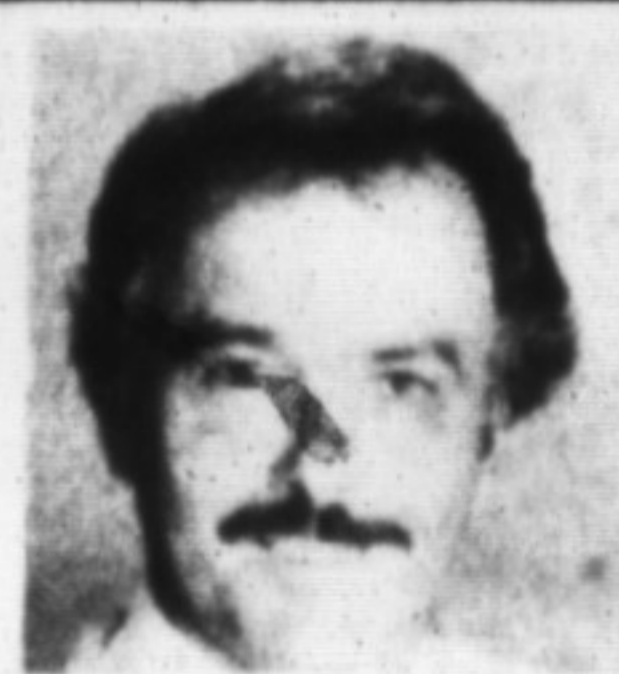
SIZZLING STARTER

Take advantage of this red hot deal on a 66' x 132' lot and located in older Milton. This 1-1/2 storey alum./wood home has pine flooring, 3 bdrms., den, fam. rm., main floor laundry room, worth a visit to see and priced to sell at \$179,000. Call Gail 878-0110.



START A FAMILY TREE!

Backing onto parkland this 3 bdrm. sidesplit features a main floor fam. rm. with fireplace, central air, upgraded broadloom thru out, large unfinished rec. rm., plus much more. Asking \$214,900. Call Gail Pullen 878-2365.



MAURICE MILJOUR
Office
878-2365
Tor. Line
826-1030

Broker Associate



YOUR WISH IS MY COMMAND

It can come true in this particular home with professional landscaping plus interlock brick walkway, insulated and dry walled garage with auto. door opener and brass lights, enclosed front entranceway with tile flooring. Inside you'll find new quality broadloom throughout the entire home, kitchen with extra cupboards, ceramic backsplash and built-in dishwasher, cozy family rm. with gas fireplace, heat pump for efficiency, central air, central vac., four large bedrooms, a beautifully finished recreation area and a dream of a fourth bathroom with a sunken jacuzzi tub, corner shower & smoked mirrors. This home is in move in condition! \$325,900.

Contact Listing Agent
Maurice Miljour, Broker Associate



DOUG J. BUTSON
Office 878-2365
Tor. Line 826-1030
Res: 878-2054

OPEN HOUSE KINGSLEIGH COURT LISTING
Jan. 21 1-4 PM



On 50 x 125 lot, priv. patio, Tall spruce, sep. garage, immac. interior has eat-in kitchen, bright corner windows, gas fireplace, cent. air, washroom on two fin. levels. Excellent

family neighbourhood with door step bus serv., park and 3 public schools. Great home investment at \$197,500. Closing flexible.

RETAIL/WAREHOUSE SPACE

17 Wilson Dr. - 1630 Sq. Ft. @ \$11/sq. ft. Oak Trim, Dusty Rose walls, Gray carpet, Offices for Bank, insurance, Sales, Etc.
Ontario & Derry Rd. - 900 Sq. Ft. @ \$11/sq. ft. Hi-traffic, good business mix, great for antiques, masseuse, wicker furniture, etc.
500 Steeles Ave. - 7700 Sq. Ft. @ \$10/sq. ft. complete bldg. with offices, showroom, warehouse, store front. Excellent for Auto related sales & service.



MIKE MORGAN

Associate Broker
878-2365
826-1030 (Tor. Line)
878-8093 (Res.)



PICTURESQUE

A long paved driveway winding through mature trees leads you to the manicured lawns surrounding this quality built brick bungalow. 3 bdrms., 4 washrooms, fireplace in the main floor FR and finished rec. room with built-in bar are only a few of the many features. To complete this fine package there is a 20' x 40' inground pool, 3 car garage and a 50' x 40' barn all on 10 acres. Don't miss the opportunity. Call Mike Morgan \$499,900.



SECLUSION

Privately tucked away on 1.64 acres, close enough to town to be serviced by town water is this custom-quality built backdrop that sparkles inside. Outstanding attractions include the ceramic floor entranceway through the eat-in kitchen, new broadloom in the living room-dining room and huge family room with beamed ceiling, reclaimed brick fireplace with heatalators and access to the well landscaped patio area. The view alone will entice you into the country life. For more information please call Mike Morgan \$429,900.



GREAT POTENTIAL

If your hobbies or interests require a large enclosed area then consider this 6000 square foot building located in North Milton. Equipped with drilled well, washroom and septic system, floor drains and a full overhead door. Being just over 1-1/2 acres and the building located towards the rear of the property, the property lends itself ideally to erecting a house in the front of the lot. For more details and location please call Mike Morgan \$289,900.



A MUST TO SEE

You should start planning to live in this top quality Harding home. Plan to use the 4 large bedrooms and the large eat-in kitchen. Then plan to enjoy the plush upgraded broadloom, central air conditioning, brick fireplace in the living room and a recreation room finished to perfection. Plan those summer gatherings on the large pressure treated deck overlooking the park. Don't fail to plan... call now. Mike Morgan. \$239,900.



TOP OF THE LINE

You'll be impressed at the care that has been taken to turn this house into a great family home. The separate living room has a corner fireplace, there is a separate dining room and the kitchen has a centre island and a walkout to a large lot. A fully finished rec. room and play area together with central air ensure all the comforts for great living. Call Mike Morgan. New Listing. \$199,900.



THE COMPLETE PACKAGE

You can have it all in your next home. This beautiful two storey 4 bedroom home with 3 washrooms is newly decorated and sparkles from top to bottom. Comfort features include maintenance free exterior, central air, central vac and main floor family room with a walkout. The large rear yard has a 16' x 32' inground pool with a separately fenced play area. A must to see. Call Mike Morgan. Just listed, \$239,900.

BUILDING LOT
1.4 Acres \$179,900.

BUILDING LOT
100' x 200' \$165,000.

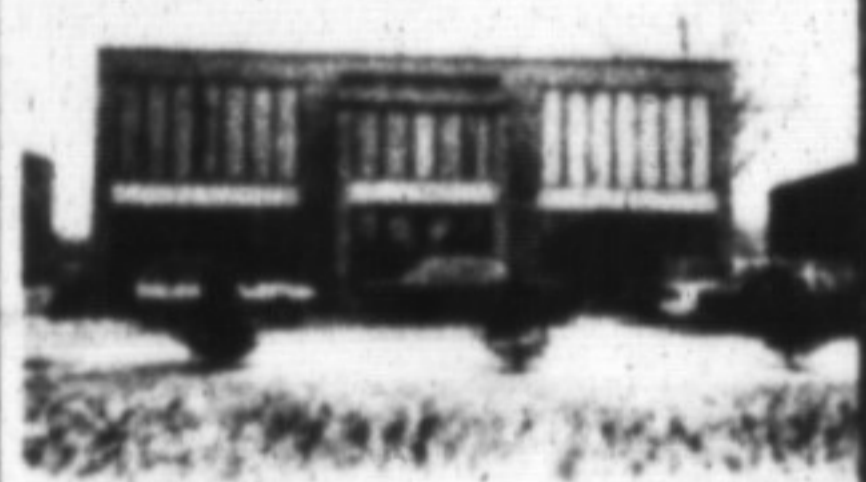


Residential & Investment Properties
878-2365
PAUL PAGE
Associate Broker



"TAKE A SECOND LOOK"

This 5 level back split has many features such as: Large living room, dining room, spacious Hollywood kitchen with lots of cupboards, master bedroom with 5 piece semi on suite, family room with fireplace and walk out to large deck, main floor laundry room, 4th bedroom or office, 4-piece washroom or F.P. level, rec. room fully finished with fireplace and wet bar, double garage with entrance to inside, yard has wooden privacy fence. All this for only \$234,900.



For Lease Industrial - 2500 sq. ft.
For Lease Industrial - 1564 sq. ft. to 10,000 sq. ft.
For Lease Commercial - 1700 sq. ft. Main St.

Above the Crowd!