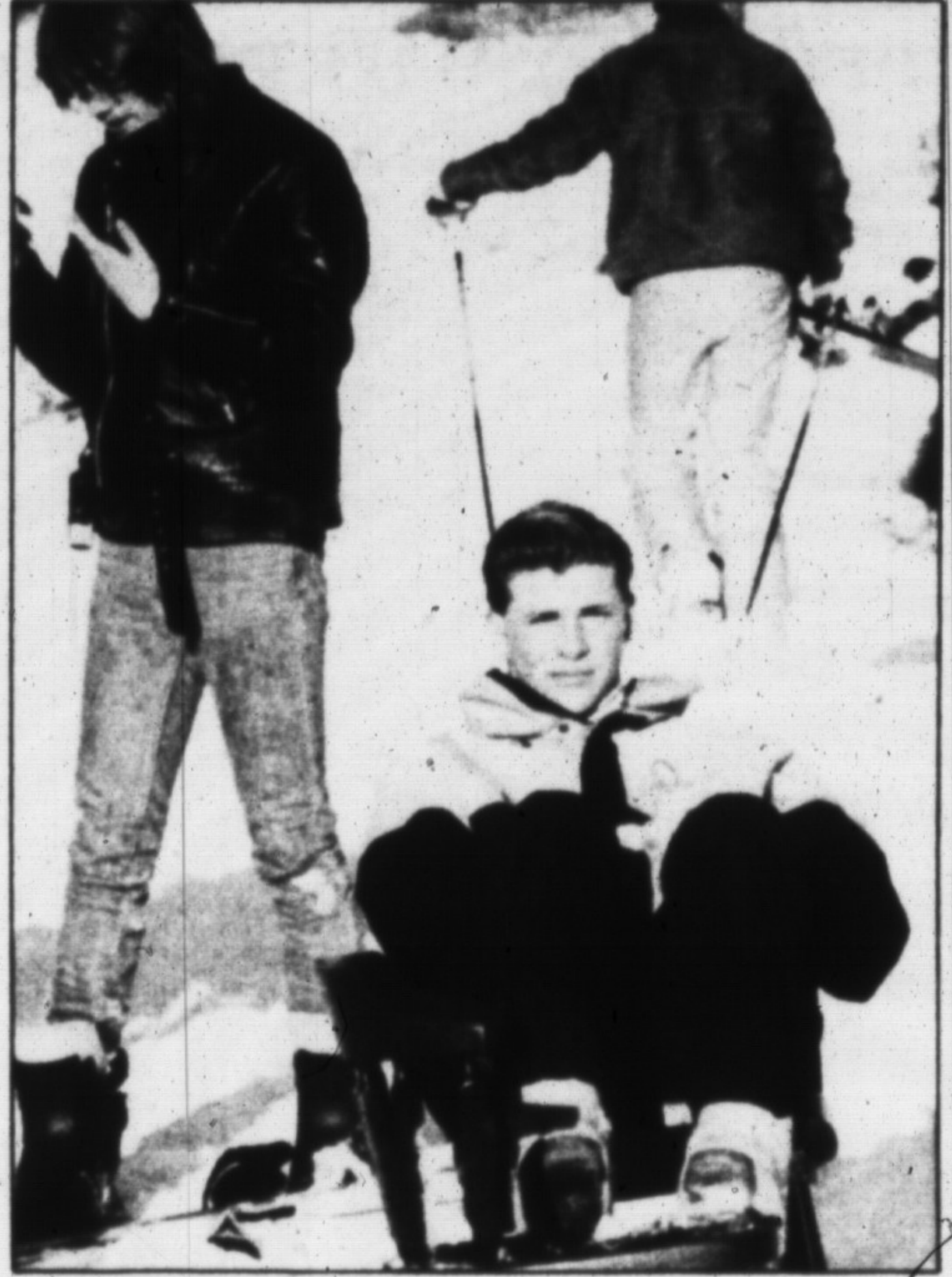




## Who needs summer?

With the weather co-operating the way it is, Glen Eden Ski Area at Keiso Conservation Area is experiencing one of its busiest seasons. Skiers were out in full force this past weekend taking advantage of the snowy slopes and the relatively mild weather. Some participants received tips on how to improve their skiing while others just relaxed and soaked in the sun. Resorts across the province are reporting a near record year which got off to an early start last month. The popular facility is located south of Highway 401, off Tremaine Road. For more information, call 878-5011.

— Photos by John Warren



## DESIGNER DAY

**JANUARY 17, 1990  
AT THE TORONTO FURNITURE MARKET**

The Toronto Furniture Market is "the" meeting place for the furniture industry, and for the first time, the Design trade will have their own day:

Wednesday, January 17, 1990 is Designer Day, from 9 am to 5 pm.

Come and see over 325 exhibitors of the newest Designs, Colours, and Fabrics in Furniture, Lighting and Accessories.

**The International Centre  
6900, Airport Road, Mississauga  
Free Parking, Free Registration, Use Entrance "B"  
For information call 677-8883**

**Kelso  
Travel**

Div. of Jonesmith International  
388 MAIN STREET EAST, MILTON

878-0618  
Fax 878-0304  
Tor. Line 821-0856

## ENGLAND, IRELAND, SCOTLAND and WALES

We are delighted to present this exclusive, 21-day tour, Fully-escorted from Canada and practically all-inclusive, the itinerary provides highlights of each country as well as special features such as: a day at the Royal Bath and West agricultural show in Somerset; a visit to the award-winning Outdoor Museum in Yorkshire; a ride on one of the famous "Great Little Trains of Wales"; a visit to the Insh National Stud and a day trip to the Aran Islands. By flying into England and out of Ireland, the repetition of a ferry ride back to Britain is avoided as well as the hassle of Customs clearance. We have attempted to make the tour as leisurely as possible with 2 and 3 night stops. It is our intention to give good value for money spent and believe this tour offers that and more! We would be pleased to have you join us.

Brochure available at our office or call and make arrangements for tour escort, June Beoney, to meet with you in our office or in the comfort of your home.

**FABRICLAND**  
CANADA'S LARGEST FASHION FABRIC DISTRIBUTOR

# JANUARY '90 CALENDAR SALE

CLIP &  
SAVE THIS  
CALENDAR!



SUNDAY	MONDAY	TUESDAY	WEDNESDAY	THURSDAY	FRIDAY	SATURDAY
<b>DAILY SPECIALS!</b> Offers valid only on date specified on calendar.			10 Entire In-Store Stock! <b>NOTIONS</b> (excluding only patterns, stuffing & basting products & promotional items) 1/2 Our Reg. PRICE	11 Entire In-Store Stock! <b>BROADCLOTH</b> 115cm wide, polyester-cotton blend. Our Reg. 4.49m <b>2.49</b> m	12 Entire In-Store Stock! <b>FUN FUR</b> Assorted widths & styles. Our Reg. from 8.98 - 24.98 m 1/2 Our Reg. PRICE	13 Entire In-Store Stock! <b>UPHOLSTERY &amp; UPHOLSTERY VINYL</b> Assorted widths & styles, individually priced. 1/2 Our Reg. PRICE
14 <b>FINAL 2 DAYS!</b>	15 Entire Regular Stock! <b>INTERFACING</b> Assorted types, individually priced. 1/2 Our Reg. PRICE	16 Special Selection! <b>LINING</b> Includes towel & premier. Our Reg. 3.49-5.49m 1/2 Our Reg. PRICE	<b>FALL WINTER BLOWOUT FLYER SALE STARTS WED. JAN. 17TH! PICK UP YOUR COPY TODAY!</b>			

Sale in effect Jan. 16/90 only. Hurry in for best selection. Look for the red sale tags. Sorry, no special orders. Offers not valid with any other discounts. Please note: In some locations some items may be sold at a price lower than our regular chain-store price, in order to match selected competitors' regular prices. Where this competitive pricing occurs, the advertised savings will be off the regular chain-store price.

**547 Main St. E.  
Milton  
878-0931**

MASTERCARD VISA CHEQUES

**FABRICLAND**  
CANADA'S LARGEST FASHION FABRIC DISTRIBUTOR  
The Best in Selection and Price Anywhere

District Health Councils



## Halton District Health Council

A five-year plan for the organization, delivery, and co-ordination of **MENTAL HEALTH AND SUBSTANCE ABUSE SERVICES** in Halton Region is being prepared by the District Health Council.

Individuals or groups wishing to provide input into this process are invited to send written submissions to:

**David B. Coulson & Associates  
Health Services Consultants  
c/o Halton District Health Council  
700 Dorval Drive, Suite 503  
Oakville, Ontario L6K 3V3**

Submissions should be submitted by  
**February 28, 1990**