

RE/MAX

Miltowne Realty Corp.

"Locally owned and operated"

22 Ontario St. South 878-2365

RE—The Canadian Champion, Wednesday, January 3, 1990



Above the Crowd!



BETTY BRADING
878-2365 Office
878-6716 Res.



DEAR SANTA... "PLEASE SELL OUR HOME"

Says anxious vendor of this immaculate 3 bedroom backsplit with 3 baths, proximity to schools and shopping as well as a large wood deck you'll love. We're ready to talk! Call Betty Brading if \$236,900 sounds compelling.



RICHARD HIERMAN
Sales Representative
Office 878-2365
Toronto 826-1030
Residence 878-5806



DOUG J. BUTSON
Office 878-2365
Tor. Line 826-1030
Res: 878-2054



NEW BEGINNING

In the recently renovated 1-1/2 storey home close to the hub of town has an in-law suite with separate entrance. Kitchen appliances on both levels are included as well as washer & dryer. Featuring a smart, modern eat-in kitchen and two baths, this home is an excellent investment opportunity. \$204,900.



SOUTH CAMPBELLVILLE
New England styling - Low outside maintenance - 1.97 acre estate potential just far enough from Hwy. 401 noise - Excellent water supply and lots of space for pool, tennis, crts, duck pond, circular dr. etc. - Stoney wall covered with raspberry canes on west lot perimeter is a beginning! Reduced \$339,000.



KINGSLEIGH COURT LISTING
If a down payment of \$27,000 and \$1,800 per month for mortgage, taxes, heat and hydro sounds affordable, then we should be showing you this comfortable brick bungalow. Rare in its neighborhood, you'll love the bright corner windows in the eat-in kitchen, the living room gas fireplace with stone mantel, the finished lower level with 2 pce washroom, the central air, the separate garage, the tall spruce and pine on the 50 x 125 lot. An excellent investment at \$197,500.

FOR RENT

Freestanding building in Village of Campbellville. Excellent location for craft or antique store, lawyer or insurance office. \$800/mth including utilities.

Call Richard for details on these opportunities.



LINDSAY J. McLAREN
Office: 878-2365
Res: 854-2451
Pager: 878-2020
Tor. Line: 826-1030



BROOKVILLE ESTATES

Gorgeous, quality built approx. 3300 sq. ft. bungalow on a very private lot in a prestigious subdivision features a fantastic living room, dining room, den, custom kitchen, solarium, central air, central vac, 2+1 garage and interlocking drive. Too many quality features to mention, so call for more information.
LINDSAY J. McLAREN Asking \$579,900.



PRESTIGIOUS SUBDIVISION

Unique colonial style 1-1/2 storey home on a very quiet private 2 acre lot, 2 storey front foyer leading to sunken living room. Kitchen has many built in appliances with centre island. Walk out from dining room to deck. Laundry room with separate entrance leading to finished area over garage ideal for in-law suite. Exclusive Brookville Estates. Please call
LINDSAY J. McLAREN Asking \$459,900.



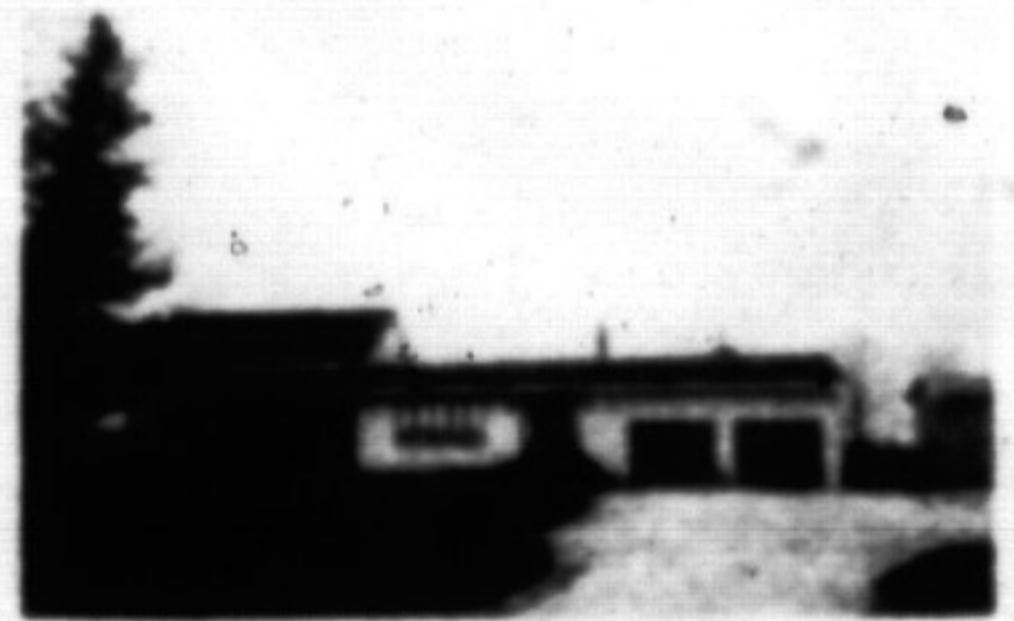
ACTON CHARMER

Backing off treed property is this 1-1/2 storey frame home in Acton. Featuring an 80' x 100' lot, four piece bath, hardwood floor and eat-in kitchen, large living room, dining room could be a third bedroom. Home has recently been redecorated.
LINDSAY J. McLAREN Asking \$165,900.



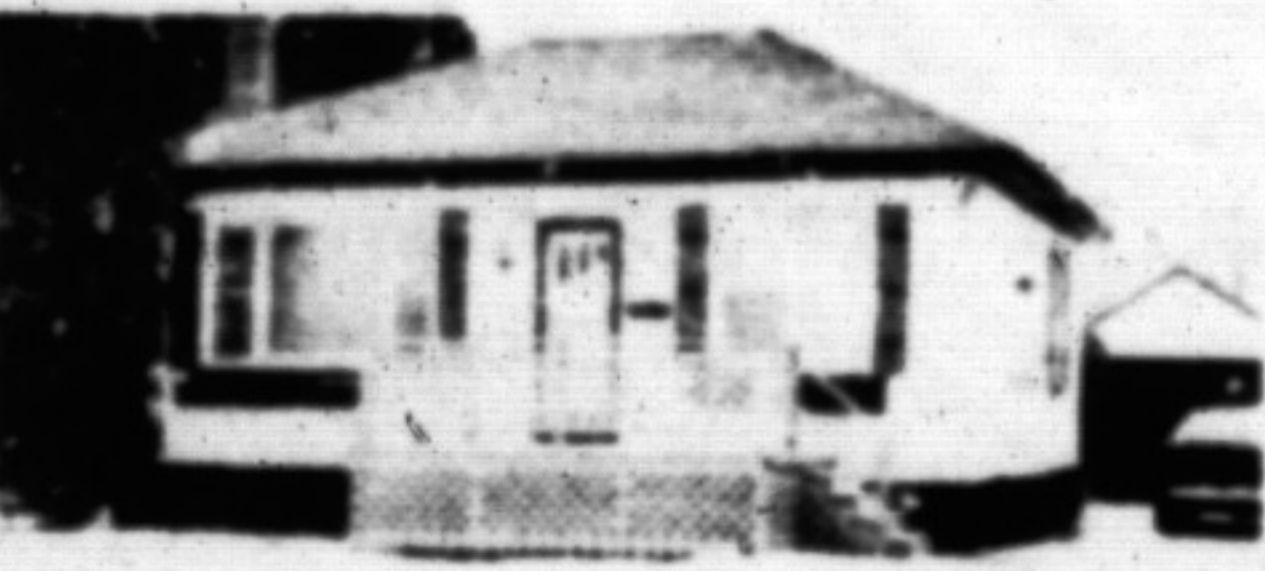
HISTORICAL VICTORIA STREET

Restored 1 3/4 brick home with 4 bedrooms, 2 baths and 3 fireplaces in older Milton is one of Milton's historical homes. Featuring 3,000 sq. ft. plus, an enormous formal living room with fireplace, large dining room, main floor family room with vaulted ceiling, brick fireplace, bar and walkout to deck. Kitchen has custom cupboards with built-in laundry area. MBR with fireplace. Other spacious bedrooms, central air conditioning and air cleaner. An excellent home for family or entertaining complete with historical charm. For more information or an appointment to view, call
LINDSAY J. McLAREN WAS \$479,900. NOW \$439,900



CAMPBELLVILLE 41 ACRES

A beautiful 41-acre parcel of open land with a pond just 10 minutes to the 401 at Campbellville. A long laneway leads up to the older 1-1/2 storey home complete with 4 bedrooms, 3 baths, indoor pool, main floor family room, 2-car garage and a separate heated 6-car garage. This picturesque property also features an 8 box stall horse barn. Don't miss this opportunity for the charm of rural living call
LINDSAY J. McLAREN Asking \$535,000.



MATURE SUPER STARTER

Updated & renovated bungalow with 2 bedrooms, 4 piece bath, finished basement, single garage and a large deck and backyard. Own your own home NOW!
Call
LINDSAY J. McLAREN Asking \$174,900.



5284 BRITANNIA ROAD
LINDSAY J. McLAREN Asking \$675,000.



Stella Hall
878-4339
Res.

Carole Stonhill
876-4913
Res.

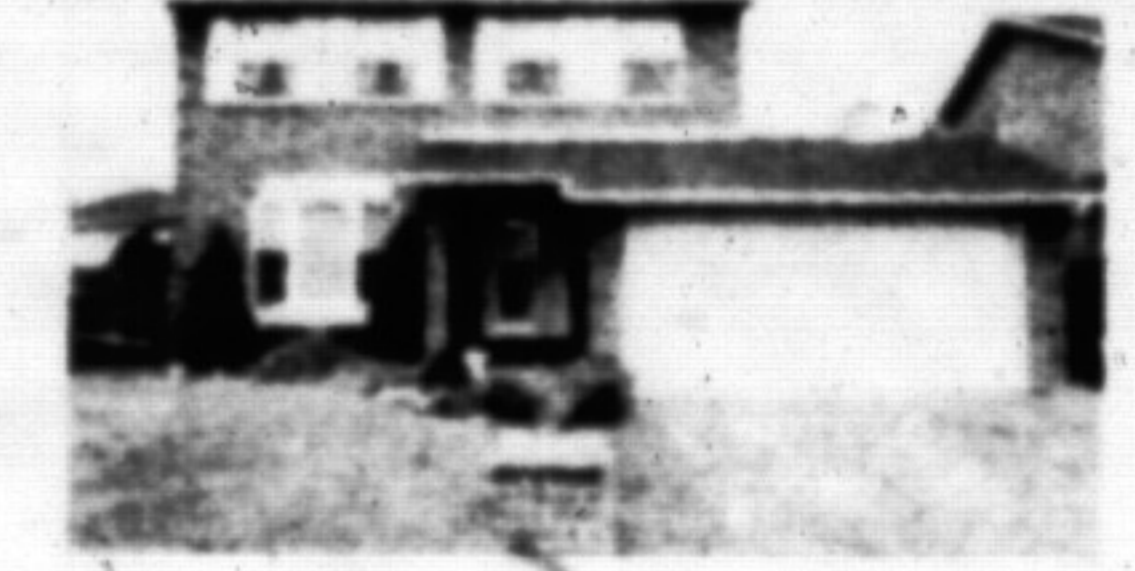


Office: 878-2365
Tor. Line: 826-1030



GOT A LIST? CHECK IT HERE!

Lovely raised bungalow situated in a prestigious area of Milton features: 3 bedrooms, central air, central vac, built-in dishwasher, oak kitchen cupboards, partly finished basement with washroom and potential for 4th bedroom, interlocking brick patio, enclosed entranceway — all on a huge family lot. Asking \$269,900. Call Carole or Stella.



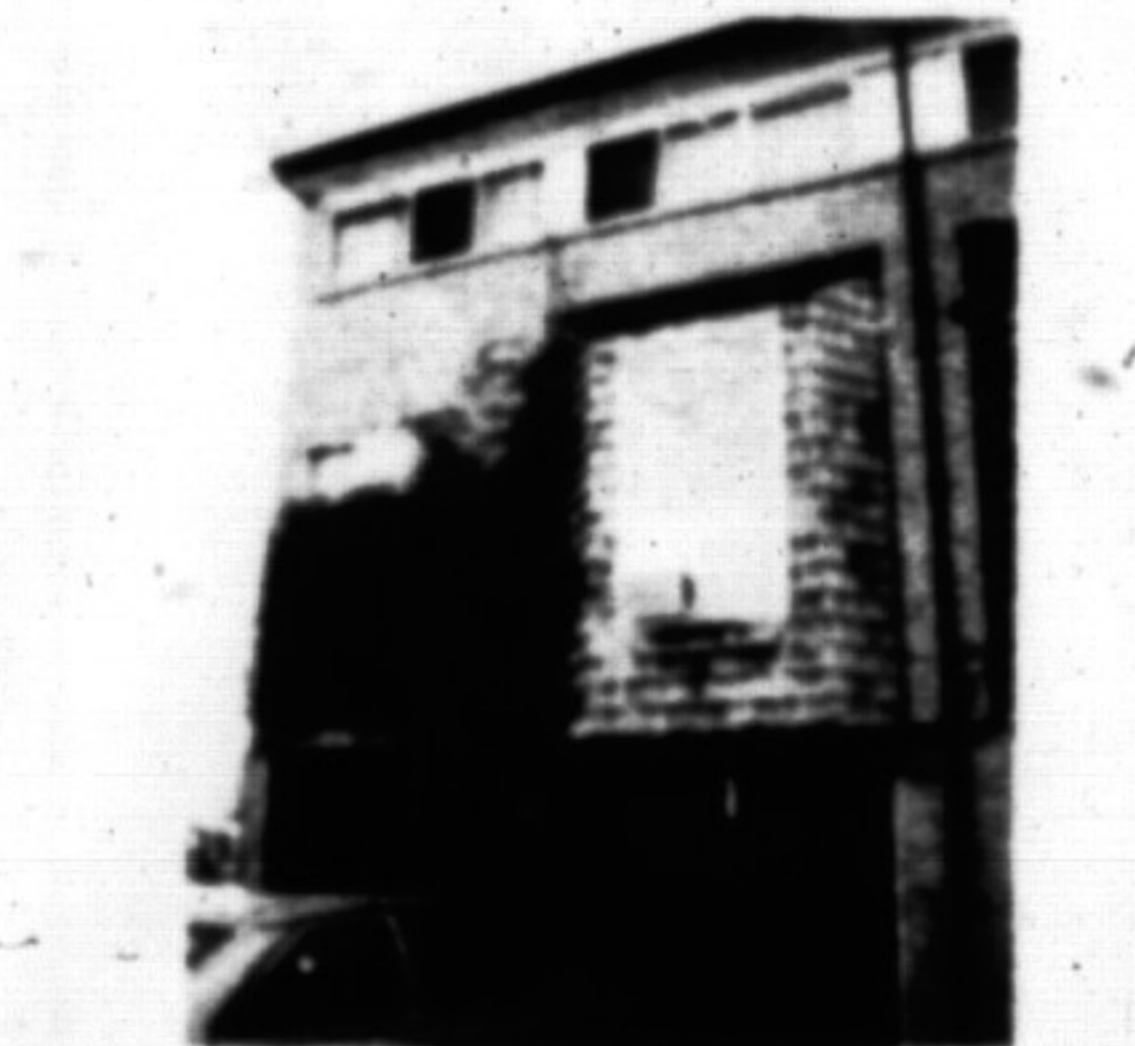
ALL YEAR YOU'LL LOVE THIS

Immaculate 3 bedroom all brick home, features extra large master bedroom with semi ensuite, finished rec. room with wet bar, and open fireplace situated on lovely lot & wrap around deck ideal for entertaining those special guests. \$245,900.



BE THERE

Let location work for you in this 3+1 bedroom brick backsplit on a beautifully landscaped lot in a prestigious area of town. Featuring an interlocking front porch, rec. room, main floor family room, 3 baths, double garage, air conditioning, fireplace and 16 x 32 oval inground pool. Don't miss this opportunity. Asking \$289,900. Call Carole or Stella.



NOTE: POTENTIAL LANDLORDS

Investors please call to see this lovely end unit, offering 3 bdms., main floor laundry room, big eat-in kitchen, finished family room, tenant would like to stay; no lease, present rent \$975. monthly + utilities. A sure price pleaser. So call today.



NEW YEAR'S COMES BUT ONCE A YEAR

And so do prices like this one! Check out all the pluses of this 1300 sq. ft. Laredo Model, 2 storey link located on Roseheath Drive, 3 bedrooms, upgraded broadoom, new kitchen cupboards, new central air. To view call and ask for Stella Hall.

PLEASE CALL STELLA HALL OR CAROLE STONHILL FOR ALL DETAILS OR INFORMATION ON THESE FINE HOMES