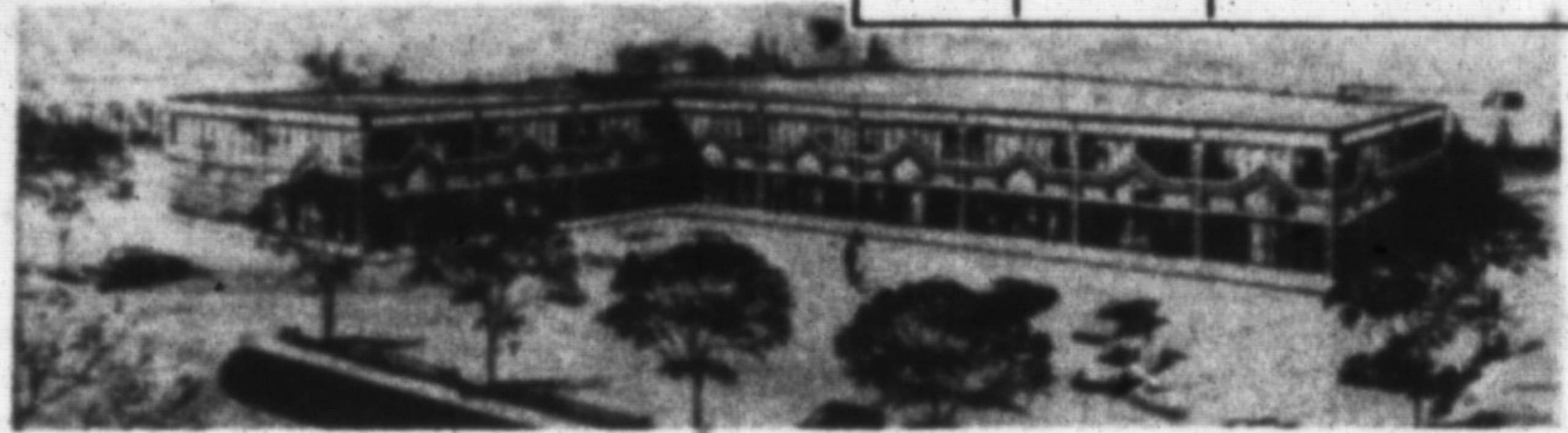
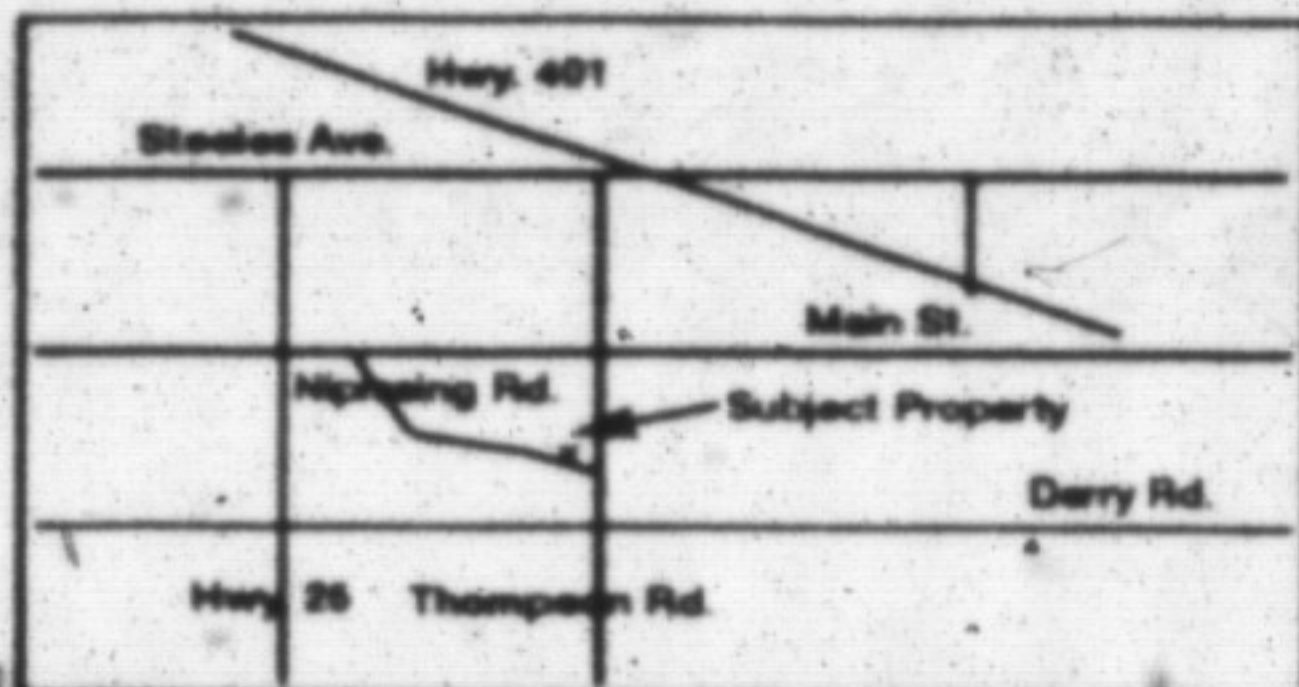


**NOW LEASING  
IMMEDIATE OCCUPANCY**



- Prestigious Two Storey Corner Complex
- Centrally Located Near Industrial, Commercial & Residential Areas
- 5 Minutes from Downtown Core
- Easy Access to All Major Routes & Services

- 27,600 sq. ft. of "High Tech" Design
- Tempered Mirrors & Clay Brick

**IDEAL FOR:**

- Commercial/ Retail outlets
- Professional/Business/ Medical Offices
- All Financial Services

**• BONUS!!!**

- 200 sq. ft. Office suites with common secretarial facilities (up to 10% of Complex)
- Attractive Lease Terms Available
- Extensive Parking up to 115 Spaces (Approx)

**For Complete Details Call:**

**896-1177**

and ask for

Linda Pinizzotto or Gary Johnston  
**Homelife Experience Realty Inc.**  
Mississauga

**876-1156**

**826-6390 (Tor. Line)**  
and ask for Lawrie Given  
**Royal City Realty Ltd.**  
Milton

**FURLONG COLLINS MANDERSON & GUNDING**

Offices in Milton,  
Brampton,  
Halton Hills

**878-8123**

Your full  
service  
Law Firm

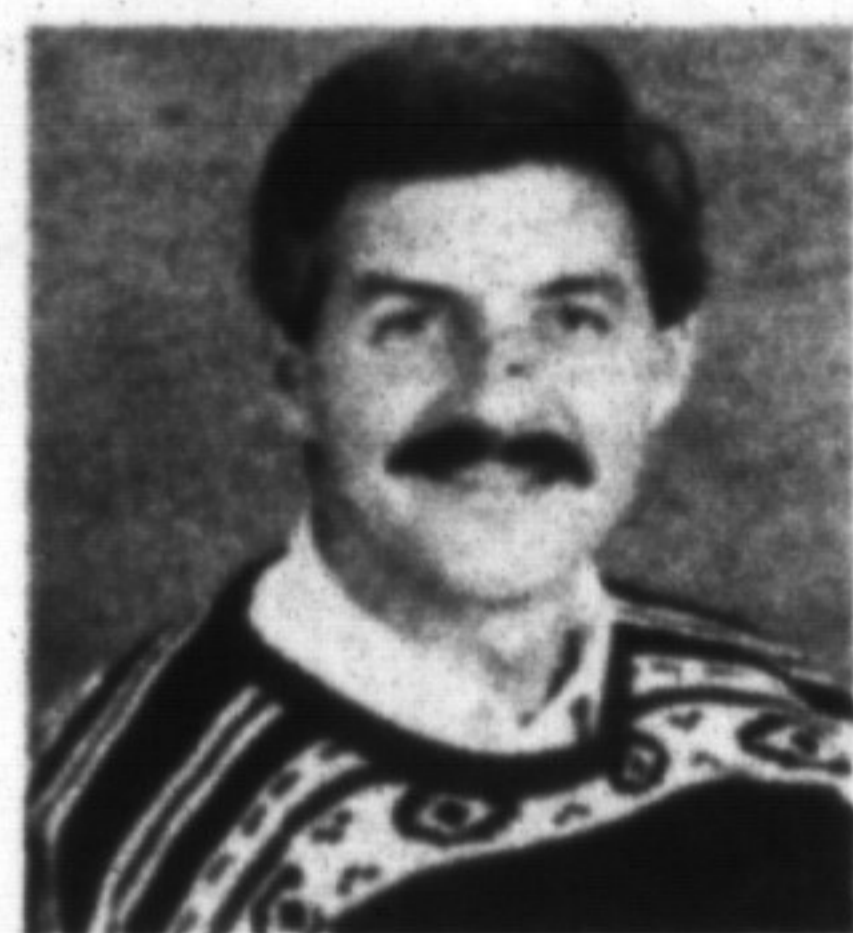
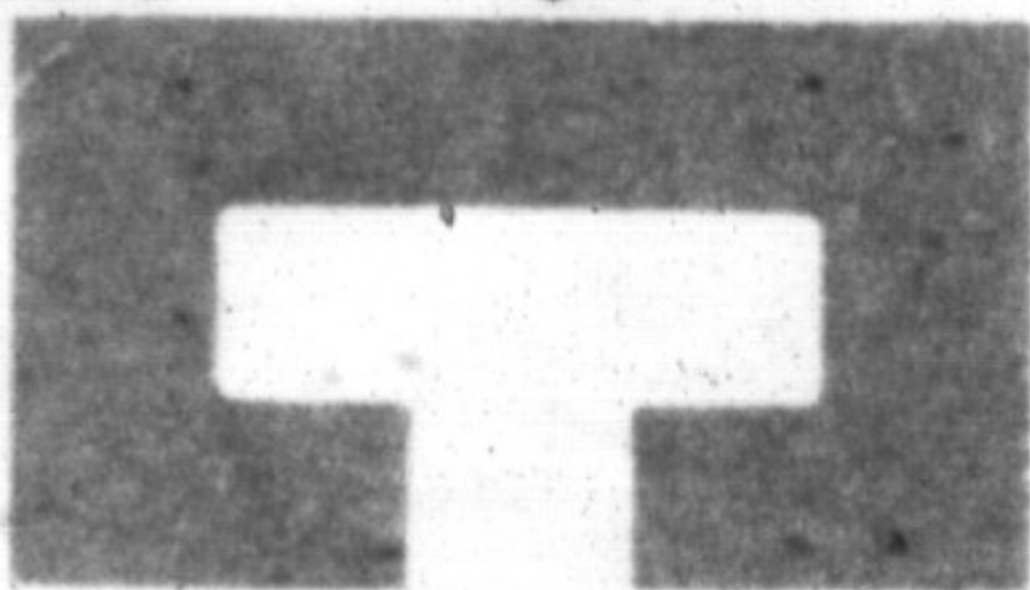
**MORTGAGE RATES THIS WEEK**

BANKS	VARIABLE RATE	6 MONTHS	1 YEAR	2 YEARS	3 YEARS	4 YEARS	5 YEARS
Cdn. Imperial	13 <sup>1</sup> / <sub>2</sub> wop	13 <sup>1</sup> / <sub>2</sub> wop	13 <sup>1</sup> / <sub>2</sub> wop 12 <sup>1</sup> / <sub>2</sub>	12 <sup>1</sup> / <sub>2</sub>	12	12	12
Bank of Montreal	13 <sup>1</sup> / <sub>2</sub> wop	13op	13 <sup>1</sup> / <sub>2</sub> wop 12 <sup>1</sup> / <sub>2</sub>	12 <sup>1</sup> / <sub>2</sub>	12	11 <sup>1</sup> / <sub>2</sub>	11.70
Laurentian Bank	n/a	13 <sup>1</sup> / <sub>2</sub> wop 13	13 <sup>1</sup> / <sub>2</sub> wop 12 <sup>1</sup> / <sub>2</sub>	12 <sup>1</sup> / <sub>2</sub>	12	11 <sup>1</sup> / <sub>2</sub>	11 <sup>1</sup> / <sub>2</sub>
National Bank	n/a	13 <sup>1</sup> / <sub>2</sub> wop 13	13 <sup>1</sup> / <sub>2</sub> wop 12 <sup>1</sup> / <sub>2</sub>	12 <sup>1</sup> / <sub>2</sub>	11 <sup>1</sup> / <sub>2</sub>	11.85	11 <sup>1</sup> / <sub>2</sub>
Bank of N. S.	13 <sup>1</sup> / <sub>2</sub> wop	13op	13 <sup>1</sup> / <sub>2</sub> wop 12 <sup>1</sup> / <sub>2</sub>	12 <sup>1</sup> / <sub>2</sub>	12	12	12
Royal Bank	13 <sup>1</sup> / <sub>2</sub> wop	13 <sup>1</sup> / <sub>2</sub> wop 13	13 <sup>1</sup> / <sub>2</sub> wop 12 <sup>1</sup> / <sub>2</sub>	12 <sup>1</sup> / <sub>2</sub>	12	12	12
Toronto-Dominion	13 <sup>1</sup> / <sub>2</sub>	13	13 <sup>1</sup> / <sub>2</sub> wop 12 <sup>1</sup> / <sub>2</sub>	12 <sup>1</sup> / <sub>2</sub>	12	12	12
<b>TRUST COMPANIES</b>							
Cabot Tr	n/a	13op	13 <sup>1</sup> / <sub>2</sub> wop 13	12 <sup>1</sup> / <sub>2</sub>	12 <sup>1</sup> / <sub>2</sub>	12 <sup>1</sup> / <sub>2</sub>	12 <sup>1</sup> / <sub>2</sub>
Canada Trust	13 <sup>1</sup> / <sub>2</sub> wop	13op	12 <sup>1</sup> / <sub>2</sub>	12	12	12	12
Central Guaranty Trust	13 <sup>1</sup> / <sub>2</sub>	13 <sup>1</sup> / <sub>2</sub> wop 13 <sup>1</sup> / <sub>2</sub>	13 <sup>1</sup> / <sub>2</sub> wop 13 <sup>1</sup> / <sub>2</sub>	13	12	12	12
Co-operative Trust	n/a	13 <sup>1</sup> / <sub>2</sub> wop 13	13 <sup>1</sup> / <sub>2</sub> wop 12 <sup>1</sup> / <sub>2</sub>	13op 12 <sup>1</sup> / <sub>2</sub>	12 <sup>1</sup> / <sub>2</sub> wop 11 <sup>1</sup> / <sub>2</sub>	11 <sup>1</sup> / <sub>2</sub>	11 <sup>1</sup> / <sub>2</sub>
First City Trust	n/a		12 <sup>1</sup> / <sub>2</sub>	12 <sup>1</sup> / <sub>2</sub>	11 <sup>1</sup> / <sub>2</sub>	11 <sup>1</sup> / <sub>2</sub>	11 <sup>1</sup> / <sub>2</sub>
General Trust	n/a	13 <sup>1</sup> / <sub>2</sub> wop 13	13 <sup>1</sup> / <sub>2</sub> wop 12 <sup>1</sup> / <sub>2</sub>	12 <sup>1</sup> / <sub>2</sub>	12	12	12
Guardian Trust	14 <sup>1</sup> / <sub>2</sub> wop	12 <sup>1</sup> / <sub>2</sub> wop	12 <sup>1</sup> / <sub>2</sub>	12 <sup>1</sup> / <sub>2</sub>	11 <sup>1</sup> / <sub>2</sub>	11 <sup>1</sup> / <sub>2</sub>	11 <sup>1</sup> / <sub>2</sub>
Household Trust	n/a	12 <sup>1</sup> / <sub>2</sub>	12 <sup>1</sup> / <sub>2</sub>	12 <sup>1</sup> / <sub>2</sub>	12 <sup>1</sup> / <sub>2</sub>	12 <sup>1</sup> / <sub>2</sub>	12 <sup>1</sup> / <sub>2</sub>
Montreal Trust	n/a	13op	13op 12 <sup>1</sup> / <sub>2</sub>	12	12	12	12
National Trust	13 <sup>1</sup> / <sub>2</sub>	13	13 <sup>1</sup> / <sub>2</sub> wop 12 <sup>1</sup> / <sub>2</sub>	12 <sup>1</sup> / <sub>2</sub>	12	12	12
Premier Trust	n/a		13 <sup>1</sup> / <sub>2</sub> wop 12 <sup>1</sup> / <sub>2</sub>	12 <sup>1</sup> / <sub>2</sub>	12	12	12
Royal Trust	n/a	13op 12 <sup>1</sup> / <sub>2</sub>	13 <sup>1</sup> / <sub>2</sub> wop 12 <sup>1</sup> / <sub>2</sub>	12 <sup>1</sup> / <sub>2</sub>	12	12	12
Standard Trust	n/a		12 <sup>1</sup> / <sub>2</sub>	12 <sup>1</sup> / <sub>2</sub>	12	12	12
Vanguard Trust	n/a	13op 13	13 <sup>1</sup> / <sub>2</sub> wop 12 <sup>1</sup> / <sub>2</sub>	12	11 <sup>1</sup> / <sub>2</sub>	11 <sup>1</sup> / <sub>2</sub>	11 <sup>1</sup> / <sub>2</sub>
Duca Credit Union	n/a	12 <sup>1</sup> / <sub>2</sub>	13op 12 <sup>1</sup> / <sub>2</sub>	12	12	12	12
Jet Power Credit Union	13 <sup>1</sup> / <sub>2</sub> wop	13op	12 <sup>1</sup> / <sub>2</sub> wop	12 <sup>1</sup> / <sub>2</sub>	11 <sup>1</sup> / <sub>2</sub>		11 <sup>1</sup> / <sub>2</sub>

NOTES: \*\* INTEREST RATE CHARGED SUBJECT TO ADJUSTMENT DURING TERM OF MORTGAGE  
PLEASE CONSULT INSTITUTIONS FOR TERM OF YEARS AVAILABLE  
R.O.R. RATES ON REQUEST R.V.O. RENEWALS ONLY  
op OPEN n/a NOT APPLICABLE  
- NOT QUOTING

RATES TAKEN:  
**DECEMBER 8, 1989**  
FISCAL AGENTS SPECIALIZES IN TRUST AND LOAN INVESTMENTS, AND ALSO SUPPLIES FREE CONSUMER INFORMATION ON THESE INVESTMENTS. PHONE 844-7780

RE3—The Canadian Champion, Wednesday, December 20, 1989



**Canada Trust Realtor**

The Canada Trust Company

**GEORGES A. JANSEN**

TOWN & COUNTRY SALES REPRESENTATIVE

Milton, Georgetown, Campbellville

North Milton, Rockwood, Acton, Guelph

Oakville, Burlington, Toronto

Fax Number

(416) 875-2211

(516) 853-2640

(416) 842-1920

(519) 853-3242

May my family and I take this opportunity to wish you, all my neighbours and friends, a very Merry Christmas and a New Year filled with health and happiness.

**"SEASON'S GREETINGS"**

from our House  
to Yours



Sincerely,

*Georges A. Jansen*

**P.S. Don't forget large or small, I list and sell them all. No property too small or too large. A hard to beat combination of nationwide realtors, banking, relocating and trust services.**