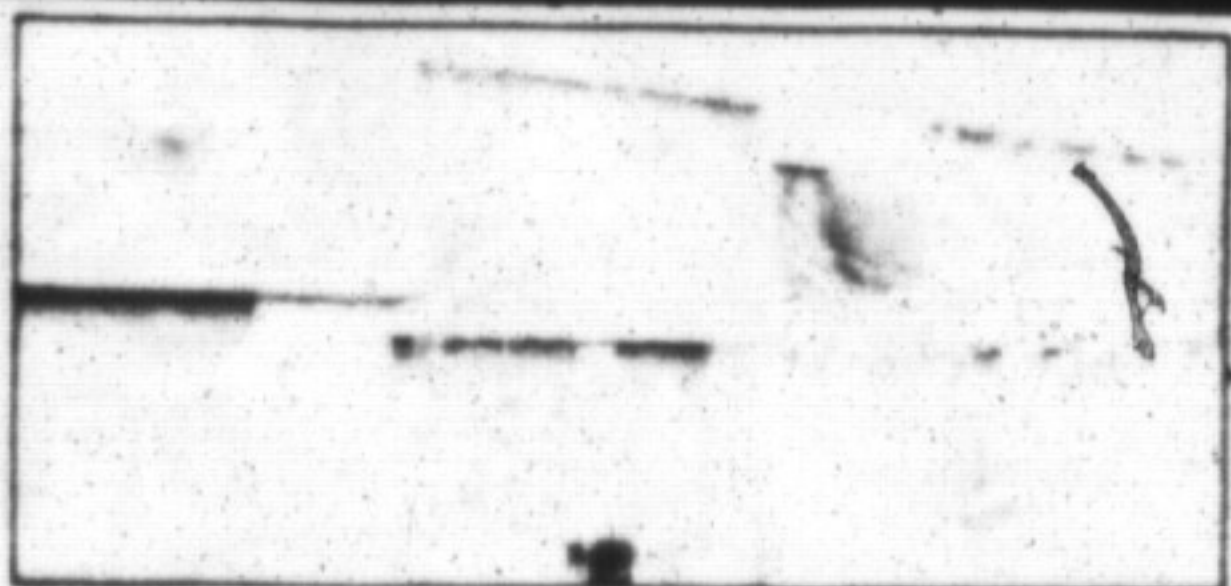


Real Estate

Canada Trust/Realtor



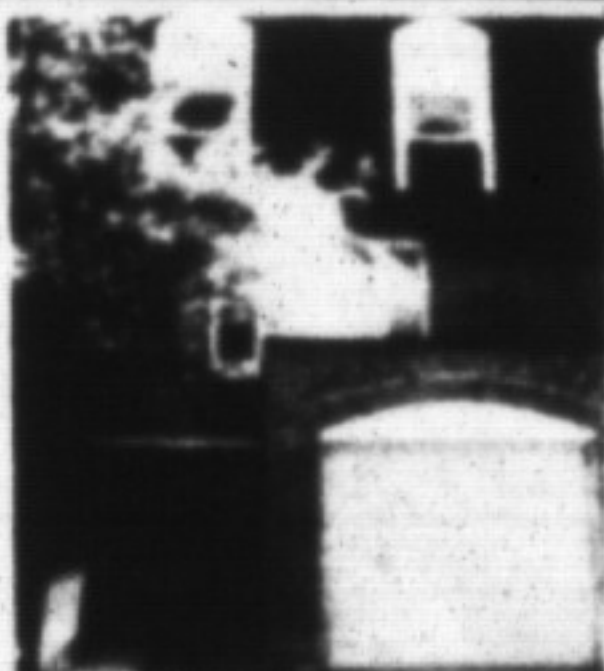
MILTON SPECIAL

\$158,900 — 3-bedroom townhouse, immaculate condition, finished rec. room, beautiful broadloom, excellent financing. Immediate possession. WALTER LUCAS 842-1920.

The Canada Trust Company
312 Lakeshore Rd. E.
Oakville
842-1920



Doug Meal, Sales Rep.
Res. 877-8279
Toll Free Pager 1-551-9094



THIS TOWNHOUSE IS A '10'

Well-maintained 3 bedroom townhouse, private rear yard, 90% finished basement. Newly decorated kitchen, maple flooring through hall & dining room. Includes own garage, also 4 pc. & 2 pc. bath. Asking \$154,900. A pleasure to view. Make an offer. Call Doug Meal 873-0300. NRS9169

NRS NATIONAL REAL ESTATE SERVICE

CHRISTIE & WOODS REAL ESTATE LTD.

189 Main Street, Milton 878-2095



ALL BRICK BUNGALOW!

Located in the Heart of Milton on a nice treed lot. This home offers 3 bedrooms, large eat-in kitchen, complete in-law suite with a separate entrance, a huge four car garage and six appliances. Call Tim Nevins 875-1263 or 878-2095.



STEP INSIDE IT'S GORGEOUS

2500 square feet
Town Water — no well to run dry
Victorian oak trim
Ceramic in kitchen and bathrooms
Barzotti Oak cupboards
Oak flooring in Dining Room
1/2 Acre Lot
PLUS, PLUS, PLUS...
Call Marg for details soon
875-2443



SO MUCH CLASS

All that you would expect in a home of this calibre is here. Large kitchen with Barzotti oak cupboards, lead you to the deck which invites you to view the beautiful countryside with mature trees nestled on one acre lot. For your personal inspection call Marg at 875-2443.



IMMACULATE CONDITION

This 3 bedroom home is complete with 2 full baths, central air, central vac, family room, professionally finished rec room with wet bar. Ready for immediate possession. Call Tim Nevins 876-1263 or 878-2095.

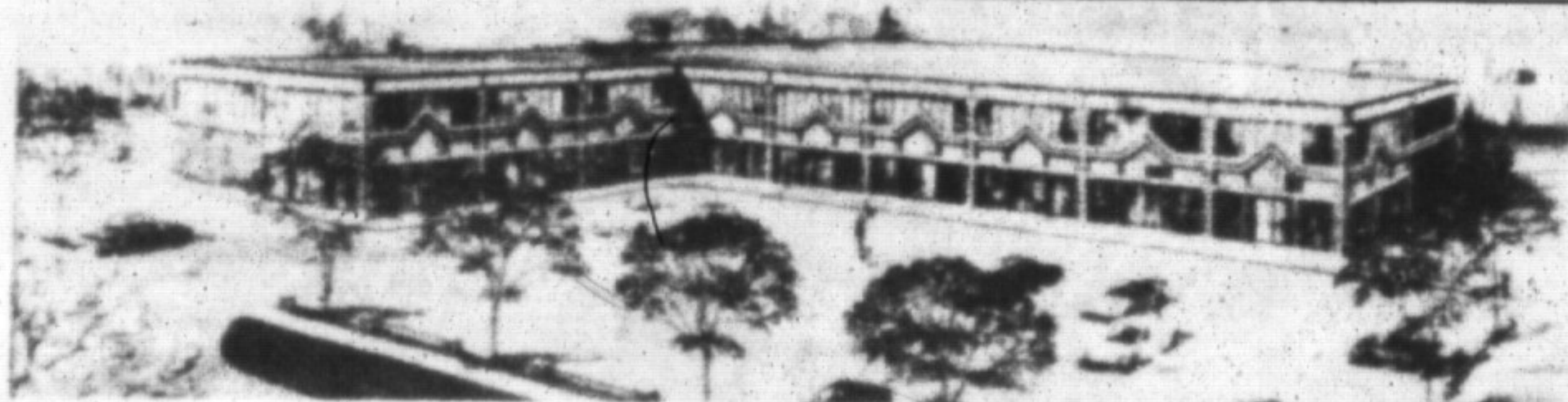
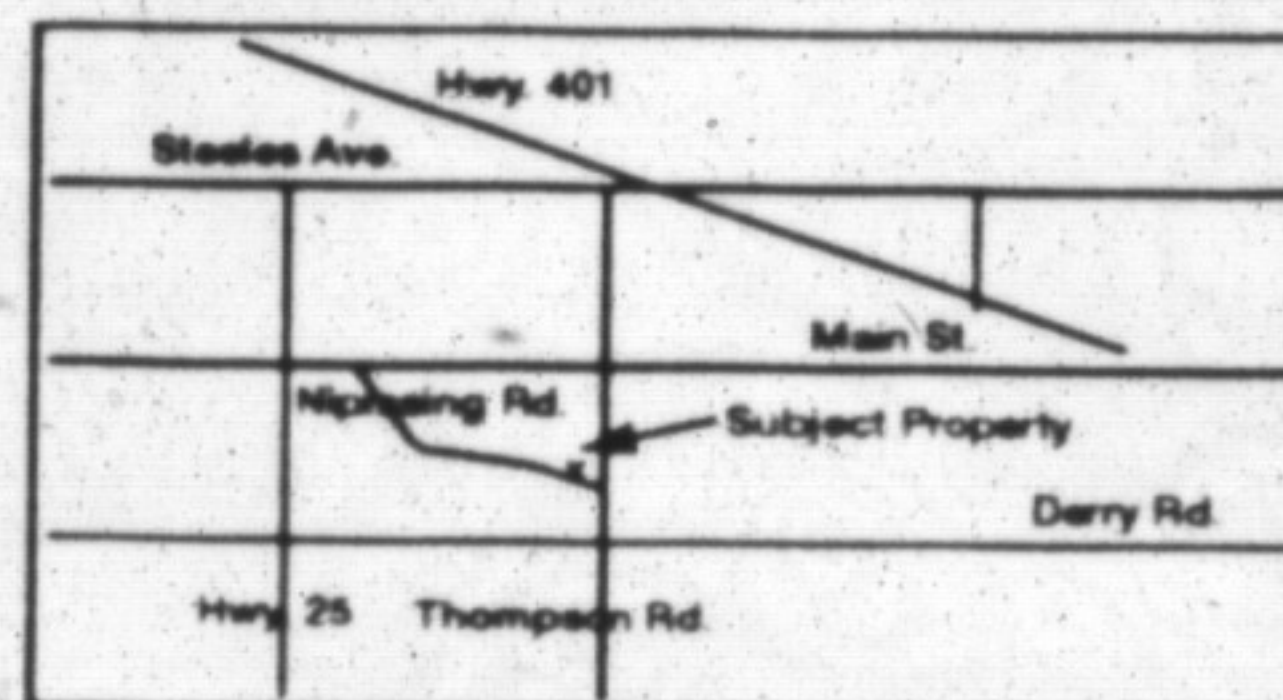
WANTED! WANTED! WANTED!
Fairly new bungalow approx. 2500 sq. ft.+. South of 401 preferred, Campbellville area. Willing to pay \$600,000. Call Marg if you can help. 875-2443.

THINKING of selling in the Spring? **NOW** would be a good time to check on market conditions, so if you need any realty information give Cam Gall a call for an up to date market evaluation or any Real Estate questions you need ANSWERED. 876-2856

Yvonne Christie—Broker/Owner—878-2095

Tim Nevins 875-1263 Cameron Gall 876-2856
Allan Christie 878-2095 Margaret Christie 875-2443

NOW LEASING IMMEDIATE OCCUPANCY



- Prestigious Two Storey Corner Complex
- Centrally Located Near Industrial, Commercial & Residential Areas
- 5 Minutes from Downtown Core
- Easy Access to All Major Routes & Services
- 27,600 sq. ft. of "High Tech" Design
- Tempered Mirrors & Clay Brick

IDEAL FOR:

- Commercial/ Retail outlets
- Professional/Business/ Medical Offices
- All Financial Services

• BONUS!!!

- 200 sq. ft. Office suites with common secretarial Facilities (up to 10% of Complex)
- Attractive Lease Terms Available
- Extensive Parking up to 115 Spaces (Approx)

For Complete Details Call:

896-1177

and ask for

Linda Pinizzotto or Gary Johnston
Homelife Experience Realty Inc.
Mississauga

876-1156

826-6390 (Tor. Line)

and ask for Lawrie Given
Royal City Realty Ltd.
Milton

FURLONG COLLINS MANDERSON & GUNDING

Offices in Milton,
Brampton,
Halton Hills

878-8123

Your full
service
Law Firm

MORTGAGE RATES THIS WEEK

BANKS	VARIABLE RATE	6 MONTHS	1 YEAR	2 YEARS	3 YEARS	4 YEARS	5 YEARS
Cdn. Imperial	13 1/2%	13 1/4%	13 1/4%	12 1/4%	12	12	12
Bank of Montreal	13 1/2%	13%	13 1/4%	12 1/4%	12	11 1/4%	11 1/4%
Laurentian Bank	n/a	13 1/4%	13 1/4%	12 1/4%	12	11 1/4%	11 1/4%
National Bank	n/a	13 1/4%	13 1/4%	12 1/4%	11 1/4%	11 1/4%	11 1/4%
Bank of N. S.	13 1/2%	13%	13 1/4%	12 1/4%	12	12	12
Royal Bank	13 1/2%	13 1/4%	13 1/4%	12 1/4%	12	12	12
Toronto Dominion	13 1/2%	13	13 1/4%	12 1/4%	12	12	12
TRUST COMPANIES							
Cabot Tr.	n/a	13%	13 1/4%	12 1/4%	12 1/4%	12 1/4%	12 1/4%
Canada Trust	13 1/2%	13%	12 1/4%	12	12	12	12
Central Guaranty Trust	13 1/2%	13 1/4%	13 1/4%	13	12 1/4%	12	12
Co-operative Trust	n/a	13 1/4%	13 1/4%	13%	13 1/4%	11 1/4%	11 1/4%
First City Trust	n/a	13	12 1/4%	12 1/4%	11 1/4%	11 1/4%	11 1/4%
General Trust	n/a	13 1/4%	13 1/4%	12 1/4%	12	12	12
Guardian Trust	14 1/2%	12 1/4%	12 1/4%	12 1/4%	11 1/4%	11 1/4%	11 1/4%
Household Trust	n/a	12 1/4%	12 1/4%	12 1/4%	12 1/4%	12 1/4%	12 1/4%
Montreal Trust	n/a	13%	13%	12	12	12	12
National Trust	13 1/2%	13	13 1/4%	12 1/4%	12	12	12
Premier Trust	n/a	13 1/4%	13 1/4%	12 1/4%	12	12	12
Royal Trust	n/a	13%	13 1/4%	12 1/4%	12	12	12
Standard Trust	n/a	12 1/4%	12 1/4%	12 1/4%	12	12	12
Vanguard Trust	n/a	13%	13 1/4%	12	11 1/4%	11 1/4%	11 1/4%
Duca Credit Union	n/a	12 1/4%	13%	12	12	12	12
Jet Power Credit Union	13 1/2%	13%	12 1/4%	12 1/4%	11 1/4%	11 1/4%	11 1/4%

NOTES: ** INTEREST RATE CHARGED SUBJECT TO ADJUSTMENT DURING TERM OF MORTGAGE
PLEASE CONSULT INSTITUTIONS FOR TERM OF YEARS AVAILABLE
R/O R. RATES ON REQUEST R/O RENEWALS ONLY
OP. OPEN N/A NOT APPLICABLE
NOT QUOTING

RATES TAKEN

DECEMBER 8, 1989

FISCAL AGENTS SPECIALIZES IN TRUST AND LOAN INVESTMENTS, AND ALSO SUPPLIES FREE CONSUMER INFORMATION ON THESE INVESTMENTS. PHONE 844-7700