

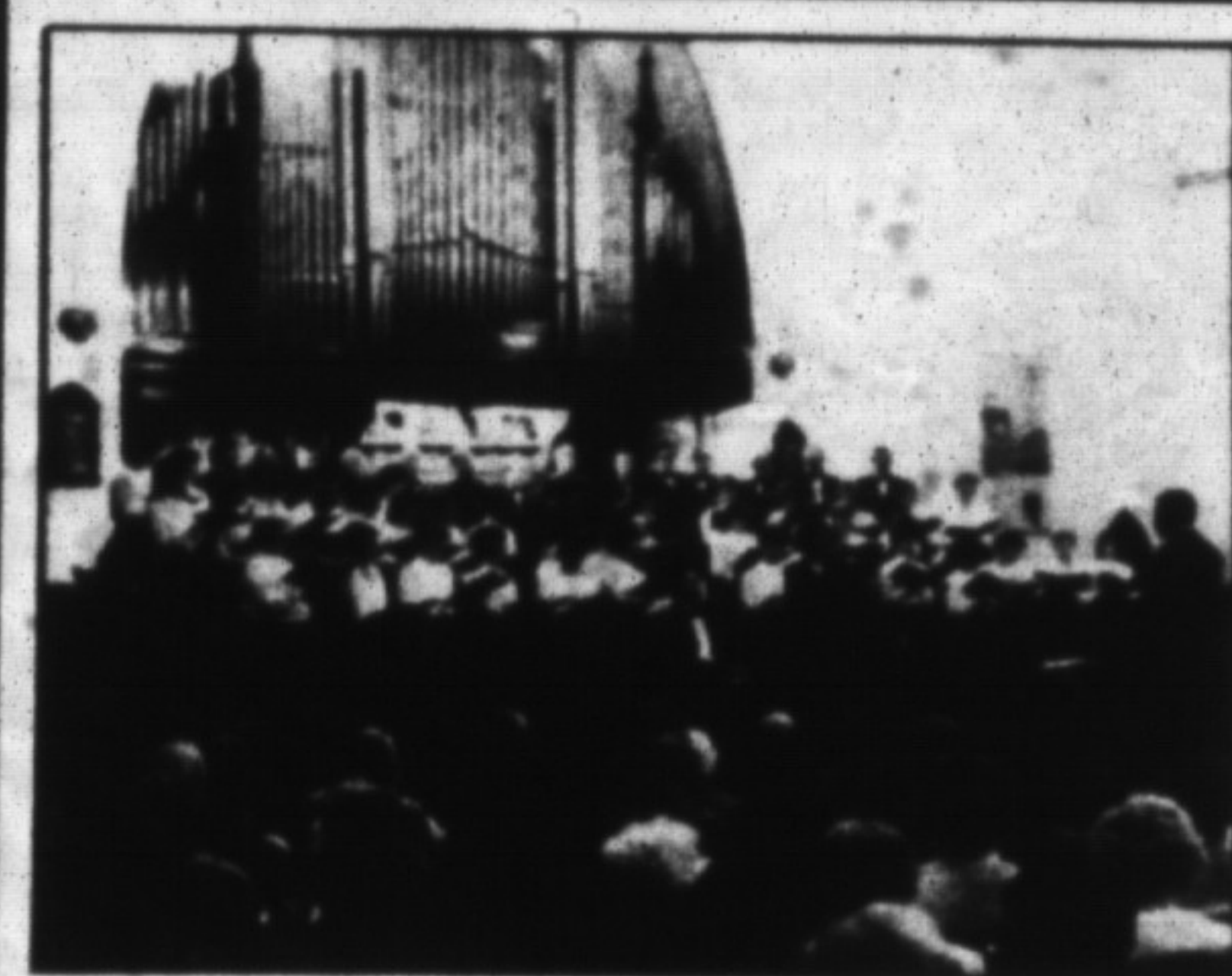
DINNER SHOW
DECEMBER 14
at



BAYRISCHER HOF
FAMILY RESTAURANT
324 Steeles Ave., East, Milton
878-1110

TICKETS NOW ON SALE
at the Restaurant or Call to Reserve
\$19.95 DINNER AND SHOW

Arts & Entertainment



Photos by JON BLACKER

Festive note

The Christmas season has officially begun in Milton with the presentation of the annual Christmas concert by the local 50-voice choir. Milton Choristers performed Handel's *Messiah* at St. Paul's United Church on Sunday and will present a family concert this Sunday at the same location beginning at 3 p.m.



E.C. Drury High School Horticulture Program Annual

CHRISTMAS SALE

Friday, December 8th
10:00 am. - 8:00 pm.
E.C. Drury Greenhouse

Christmas Plants	Centrepieces
Christmas Crafts	Baked Goods
Wreaths	Tropicals
Cook Books	Childrens Books
Best Sellers	Posters

FLORAL ARRANGEMENTS
Poinsettia Special \$5.50 (6" wrapped)

The PREMIER MILTON Cinemas 876-3333
FREE PARKING
121 CHISHOLM RD. MILTON W. OF HWY. 25 • S. OF 401

THEATRE AVAILABLE FOR CHRISTMAS RENTALS
HELD OVER 3RD WEEK

MICHAEL J. FOX
CHRISTOPHER LLOYD
Getting back was only the beginning.

BACK TO THE FUTURE II
Daily 7:00 & 9:00 p.m.
SUN. MATINEE 2:00 p.m.

HELD OVER 2ND WEEK

YULE CRACK UP!
CHEVY CHASE
CHRISTMAS VACATION
Daily 7:00 & 9:00 p.m.
SUN. MATINEE 2:00 p.m.

STARTING FRIDAY — SEPARATE ADMISSION

THE BEAR
Daily 7:00 p.m. ONLY
SUN. MATINEE 2:00 p.m.

HARLEM NIGHTS
Daily 9:00 p.m. ONLY
SUN. MATINEE 2:00 p.m.

ADMISSION PRICES
ADULTS FRI. TO SUN. \$6.00
MON. TO THURS. ONLY \$4.00

At Ebenezer United

Carol sing part of church concert

An evening of Christmas music and carols will be held at Ebenezer United Church Sunday.

The 7:30 p.m. community concert will feature a choir from St. George's Anglican Church, under the direction of Dr. Gerald Manning.

It's the perfect time to hold such a concert, said Stanley Saunders, convening member of Ebenezer and conductor of Brantford Symphony Orchestra.

"At this time of year, the feelings of fellowship are strong and we felt it appropriate to host such a concert with an ecumenical concept in mind," he said.

The 30-voice choir will perform festive anthems by composers such

as John Rutter. In addition, the concert will feature a traditional caroling and members of the congregation will lead readings of the seven lessons of the Christmas story.

Choir master and organist, Dr. Manning is a well recognized musician in Guelph. He has served as musician in three Guelph churches during the past 20 years.

As well, he is currently an associate professor in the department of English language and literature and serves as chairman of the music department at the University of Guelph.

Mr. Saunders hopes the event will draw the same enthusiasm a similar concert attracted during the summer.

"Our summer concert featuring the American Youth Chorale filled the church and the overwhelming response leads us to believe the community welcomes this kind of musical celebration," he added.

Tickets, which cost \$3, can be reserved by calling 854-2361 or (519) 856-4169.

The church's 166-year-old congregation has a long history of community participation dating back to the first settlers in 1823. Plans for a new addition include a community child care centre.

Ebenezer United Church is located on Guelph Line in Nassagaweya, six kilometers north of Highway 401.

Prizes for poetry

If you feel you have a talent to write creative poetry, the annual American Poetry Association (A.P.A.) contest could be an inspiration. The grand prize winner receives \$1,000 and the first prize is \$500.

A total of 152 poets will win cash and publication prizes worth \$11,000. The deadline for entries is Dec. 31.

Poets may enter the contest by sending up to six poems, each no more than 20 lines. Entry is free and everyone is welcome to enter.

"Ten Canadians have won prizes in our recent contests, so we are eager to see more work from Canadian poets," said Robert Nelson, publisher for the association.

Each poem is also considered for publication in the *American Poetry Anthology*, which is a collection of the most recent poetry of today.

Send poems with name and address on each page, to American Poetry Association, Dept. CT-91, 250-A Potrero St., P. O. Box 1803, Santa Cruz, CA. 95061.



Photo by JON BLACKER

It's in the cards

Catherine Mitchell uses Tarot cards to forecast Jerry Bouchard's future at a Psychic Fair Saturday. The fair, sponsored by members of the International Psychic Society, was held at the Herigate Inn last Friday, Saturday and Sunday.