

# Century 21

420 MAIN ST., MILTON  
878-8495

Toronto Line 821-4764

GOLDEN REAL ESTATE LIMITED



**BRIGHT AND BEAUTIFUL**

High ceilings, a bay window, restored pine flooring and very tasteful decorating as yours to enjoy in this 3 or 4 bedroom home. Included in the asking price of only \$219,900, are a top quality wood stove backed by a full brick wall, a garden shed, a ceiling fan and all window coverings. Please call JUNE WARNER at 878-8495 for an inspection.



**JUST LISTED! 744 ROSEHEATH**

This beautiful home shows like a doll house, with a bright kitchen, family room with fireplace, three bedrooms plus, central air and more! Asking \$204,900. Please call SCOTT B. PRIOR at 878-8495. Open House - Sat. & Sun. 1-4 p.m.



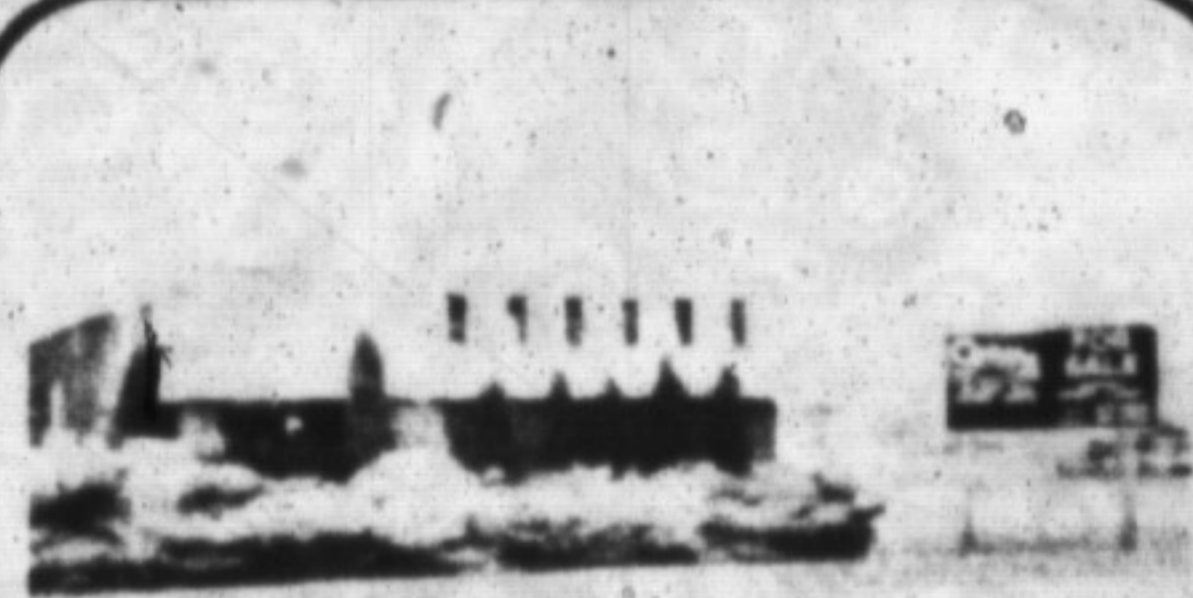
**CUSTOM QUALITY IN TOWN**

The large custom built home in one of our most desirable neighbourhoods, offers the high quality workmanship the educated buyer will appreciate. Highlights such as main floor laundry and family room with fireplace, a 4th bedroom or study and master ensuite bath only begin to describe the features of this one-owner home. Listed for sale at \$299,900. For your personal viewing please contact JAMES D. SNOW at 878-8495.



**WARM NEIGHBOURHOOD**

This 4 bedroom side-split with large family room is enhanced by the large yard and lovely neighbourhood. Priced at \$259,900. For your personal viewing, please call JIM KERR at 878-8495.



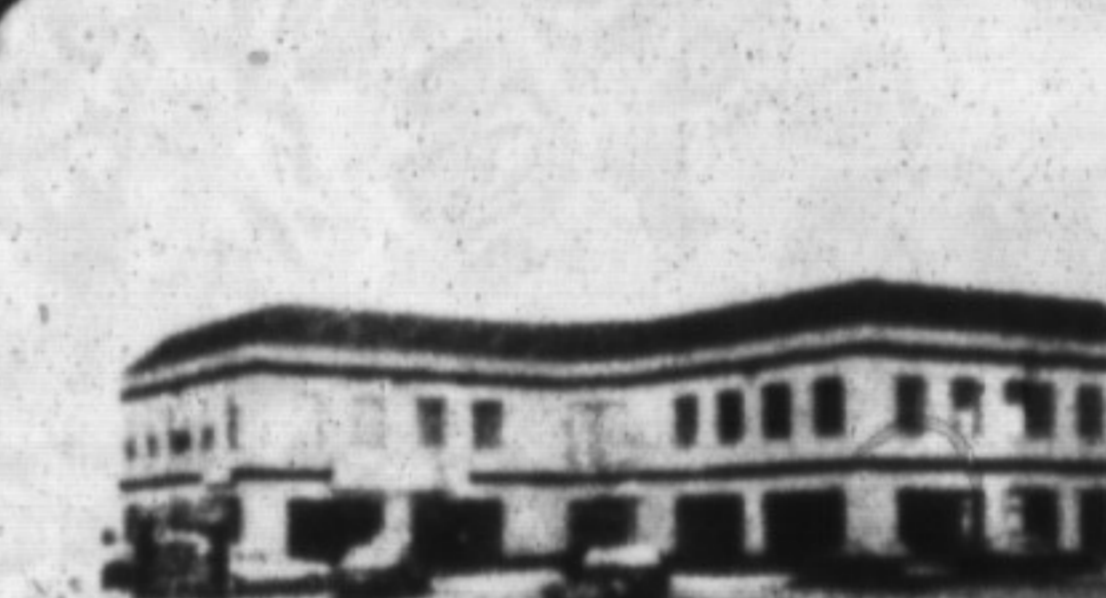
**PRIME MILTON INDUSTRIAL**

\* 7 plus acres  
\* UP to 50% Commercial potential  
\* Highway 25 & 401 location  
\* 20,000+ sq. ft. of buildings  
Please contact ERNIE ZAMMIT at 878-8495 for further details or your personal viewing.



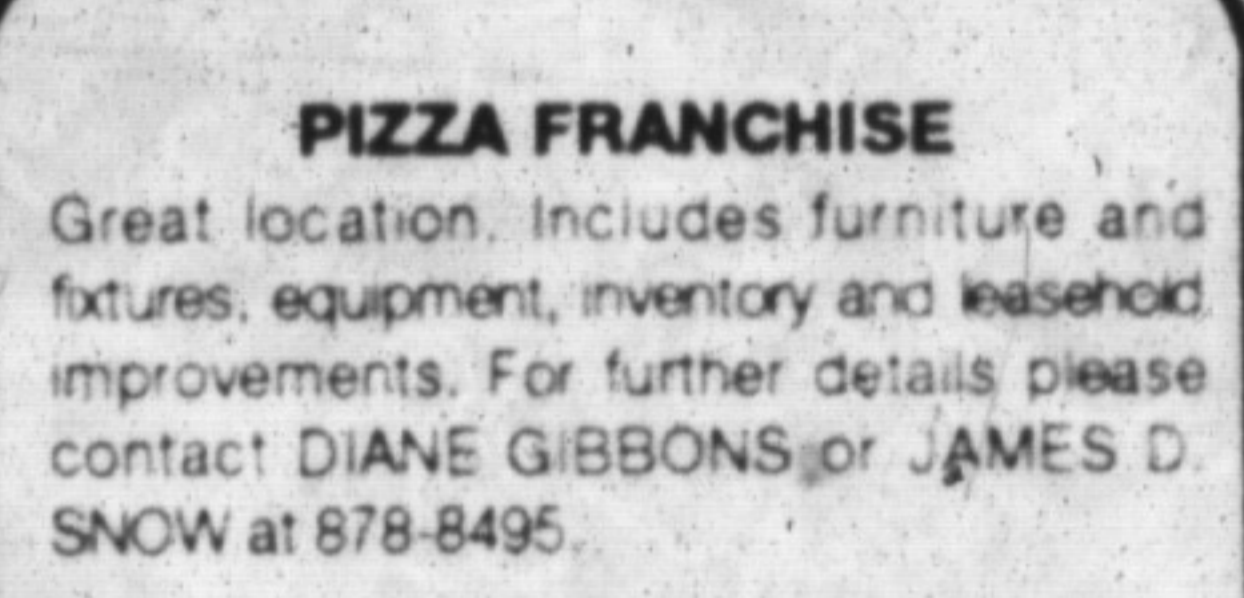
**BY THE POND**

Historic 2 storey on Martin St. with legal non-conforming 3 bedroom apartment zoned R-3. Good potential for Doctor, Lawyer etc. Listed at \$345,000. For further information please call ERNIE ZAMMIT at 878-8495.



**FOR LEASE**

Prime Medical/Profession Centre. Derry Rd. location next to hospital, Milton. 5,000 - sq. ft. available. Can size to suit \$16.00 sq. ft. Contact DON PELZ at 878-8495.



**PIZZA FRANCHISE**

Great location. Includes furniture and fixtures, equipment, inventory and leasehold improvements. For further details please contact DIANE GIBBONS or JAMES D. SNOW at 878-8495.

**FULLY SERVICE INDUSTRIAL**

2.9 acres vacant M-2 industrial with water and sewers, near major companies. Survey available. Asking \$1,300,000. Contact JAMES D. SNOW for further details at 878-8495.



**SUPER INVESTMENT PROPERTY**

Excellent site for R-6 development, currently zoned R-3. Present zoning allows home profession (lawyer, dentist, etc.). Well maintained bungalow on .62 acres will provide interim income. Asking \$310,000. Please contact JAMES D. SNOW at 878-8495.



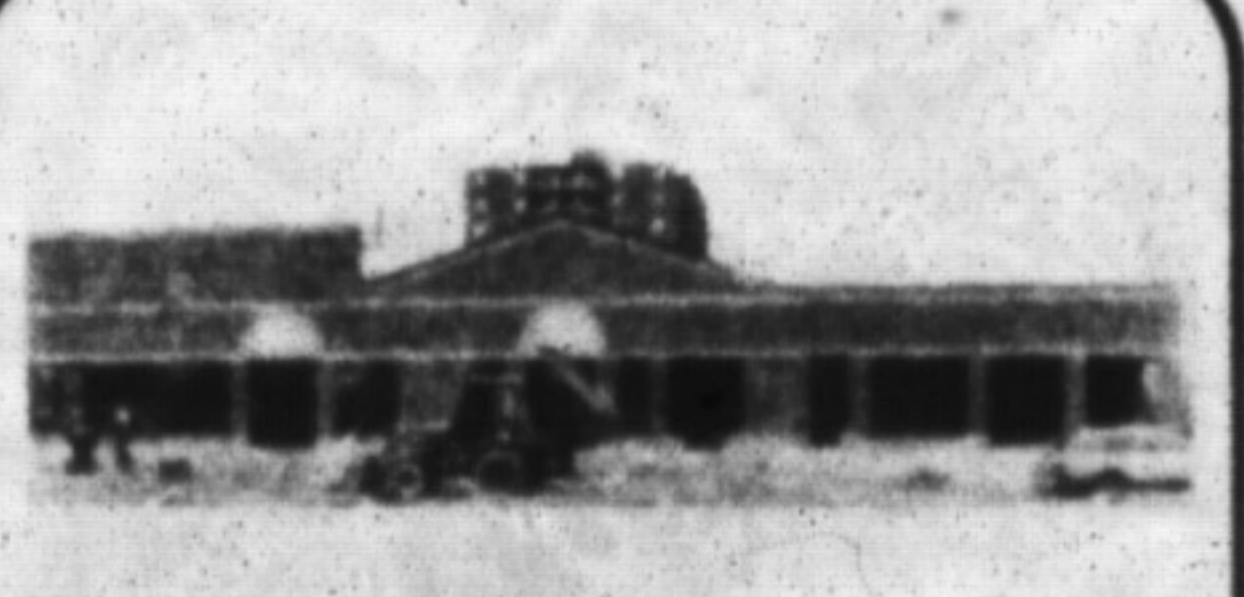
**BUILDING ON .64 ACRES**

Main Street location, Milton. Century home many uses are possible. Contact JAMES D. SNOW at 878-8495.



**TIMBERLEA**

4 Bedrooms  
3 Bathrooms  
2 Car Garage  
ONE Super Buy  
Please call DIANE GIBBONS at 878-8495 for further details.



**COMMERCIAL SPACE FOR LEASE**

Centrally located. This plaza offers excellent exposure and heavy traffic count. Ground floor commercial and 2nd floor office space. Please contact SCOTT B. PRIOR at 878-8495.



**BUSINESSES FOR SALE**

\* Dry cleaners downtown Milton. Good location. \$135,000.  
\* Children's clothing store. Exclusive clientele. Busy traffic area in Milton.  
For further information on these opportunities, please call SCOTT B. PRIOR at 878-8495.

**INDUSTRIAL BUILDING LOT**

1st class location M-2 zoning. Ready to go 124.68' x 157.48'. Asking \$239,900. For further details please contact SCOTT B. PRIOR at 878-8495.



**NEW LISTING**

Looking for a split level, well here's one with 4 bedrooms, 2 baths, family room with fireplace, new broadloom in '88 and a fully fenced yard with inground pool, for those hot summer days. Lot size 50'x120' and listed at only \$259,000. For your personal viewing please contact JOAN TATTRE at 878-8495 or (res) 876-1575.



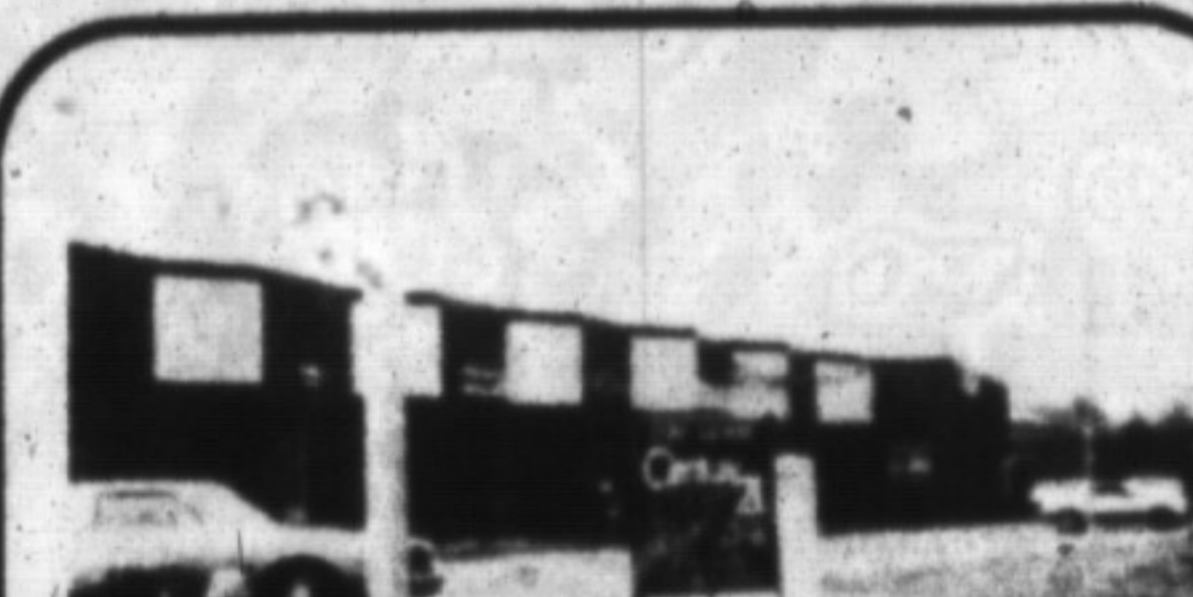
**NEW COMMERCIAL PLAZA**

At last, Milton's newest and most modern plaza will be built and ready for occupancy in April '90. For all the leasing details please contact SCOTT B. PRIOR at 878-8495.



**ESTABLISHED RESTAURANT**

Established restaurant business listed at \$115,000. Located north-west of Milton in growing community. Contact JAMES D. SNOW at 878-8495.



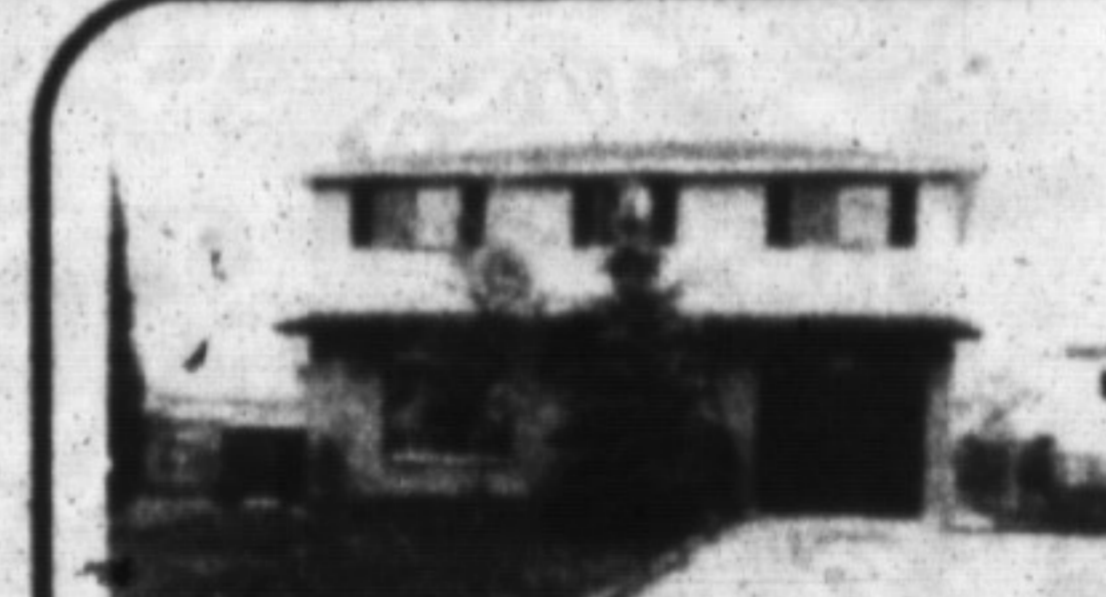
**THOMPSON & MAIN STREET**

3 units for lease. Available immediately. Main crossroad intersection exposure. For further information contact ERNIE ZAMMIT at 878-8495.



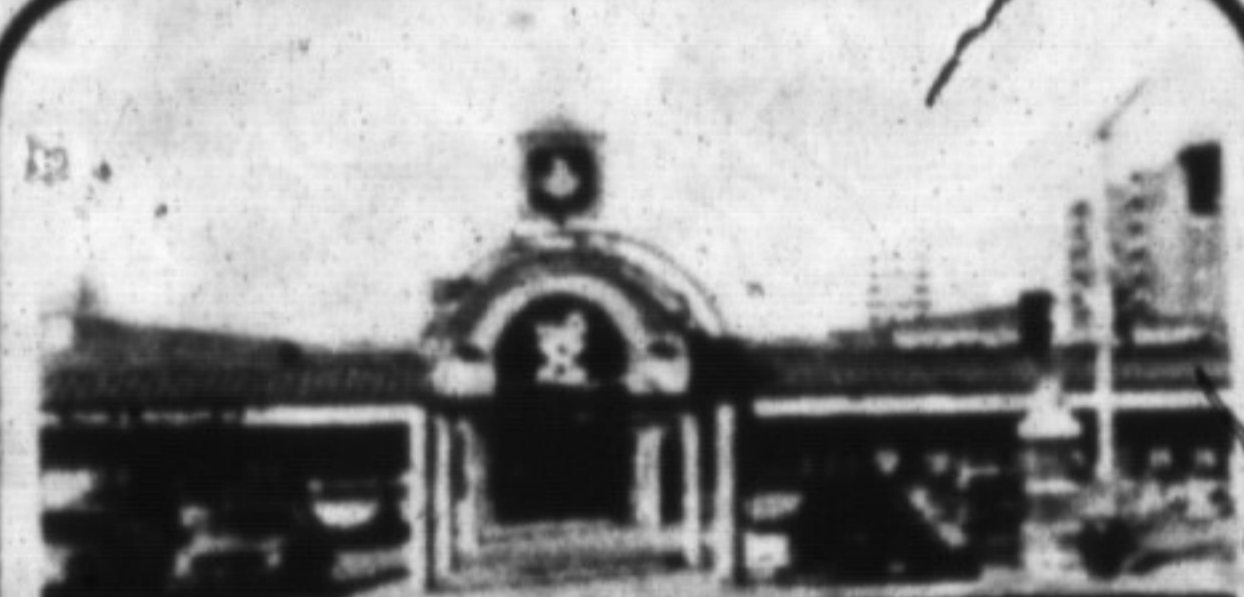
**QUIET CUL-DE-SAC LOCATION**

Elegant upgraded 3300 sq. ft. 2 storey brick house on a private cul-de-sac. End unit on ravine lot. Shows well - priced to sell at \$440,000. REDUCED to 389,900. For further details, please contact DON PELZ at 878-8495.



**ENJOY THIS CHRISTMAS**

in your new home. Included are 4 bedrooms, eat-in kitchen, fireplace in living room, good sized master bedroom, freshly painted and new broadloom throughout. Listed at only \$214,800. Please call JOAN TATTRE at 878-8495 or (res) 876-1575 for further details.



**\$14.00 SQ. FT. COMMERCIAL**

Carriage Square is a prestigious shopping centre development at Main & Martin Streets, in the heart of the old town of Milton. Carriage Square offers retailers the opportunity to capitalize on this growing market. Don't let this unique opportunity to be a part of it pass you by. For further information please contact LORRAINE/JIM KERR or RON TWISS at 878-8495.

420 MAIN ST., MILTON  
878-8495

Jim Kerr 878-8495  
Lorraine Kerr 878-8495  
William Lenizky 853-3797  
Joe Manchisi 335-5489  
Don Pelz 878-1029  
Nova Sparks-Austin 878-6728

Charles Kerr 338-7248  
Dawn Pope 878-8495  
Scott B. Prior 876-1251  
James D. Snow 878-2172  
Joan Tatrine 876-1575

Bill Gear 335-9689  
Diane Gibbons 335-5489  
Douglas Jones 878-4957  
Carlo Giangrande 876-1031  
Ron Twiss 878-4056

Lynn Wardle 876-1554  
June Warner 853-2918  
Sonja Williamson 875-1924  
Ernie Zammit 878-9475  
Paddy Gill 878-0085

Toronto Line 821-4764

Office Staff: Marie Austen, Jennifer Maunder, Barbara Wood, Tracy Young