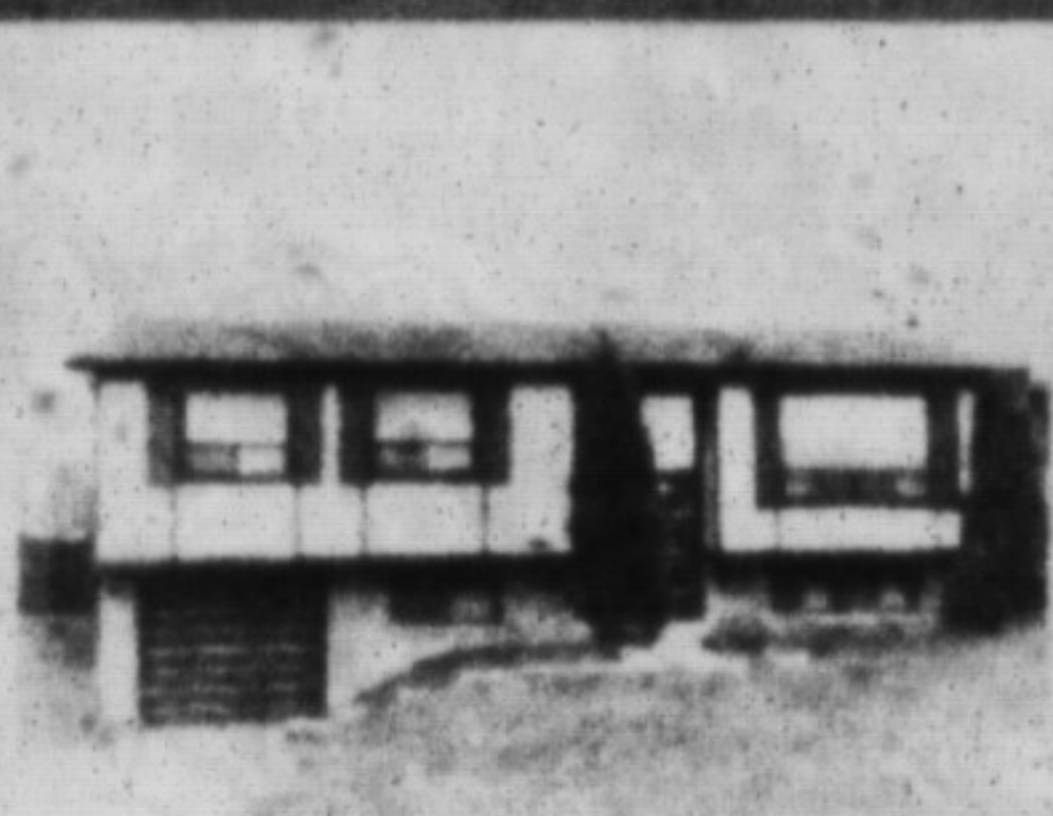




# A LEADER IN THE INDUSTRY



**YULE BE IN BY CHRISTMAS**  
Wrap up this 3 bdrm. raised bungalow early. Place a red bow on the upgraded oak kitchen cupboards for mom. Hang your stockings on the mantle of your fireplace & let your lights shine bright as all the windows have been totally upgraded. Let's talk turkey on this one!! \$195,500. Joyce Hagevik 878-8101.



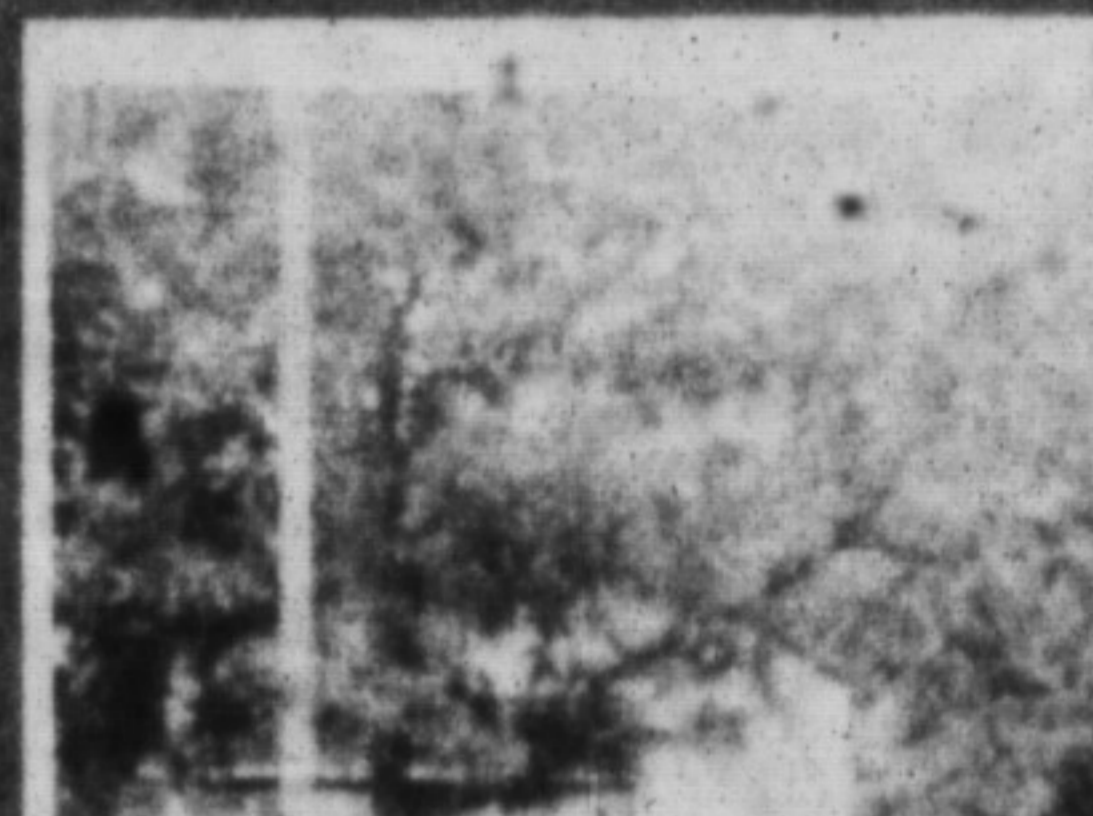
**NO TRICKS—ONLY TREATS.**  
In this fabulous 5 level 4 bdrm. sidesplit family sized kitchen overlooks fam. rm. & fireplace, plus sliding door which leads to Japanese style gardens, terraced decks and above ground pool. Lower level completely finished adding den, games room or play room. Loads of extras and upgrades. Prime location. Realistic price \$278,000. Joyce Hagevik 878-8101.



**A HOME FOR ALL SEASONS**  
Delightfully private garden with inground pool & superb landscaping, cozy fireplace family room, professionally decorated & grows to perfection! Loaded with extras and priced to sell at \$259,500. Call Jean Thomson 878-8101.



**MUST BE SEEN—\$204,900!**  
Delightful open concept home with huge living room, cozy family room with custom fireplace & pine accents, finished rec. room! Prof. decorated in fine prints, central air, fenced garden. Call Jean Thomson 878-8101.



**COMMERCIAL ZONING**  
Located in centre of village of Rockwood. For more information please call Donna Syms 878-8101.



**NEED A QUICK CLOSING?**  
We can accommodate you in this super semi. \$177,900. Value for your \$'s. Fireplace in living room, spacious eat-in kitchen, 120 ft. deep lot, finished rec. room, long paved driveway, super location. Call now. Marg Swain 878-8101.



**NEW LISTING! \$154,900.**  
Attractive 3 bdrm. townhouse. Well maintained & decorated, ensuite bath, view of escarpment, 5 appliances included. To view call Ed or Norma Proveau 878-8101.



**103 ACRE FARM PROPERTY**  
Excellent land investment, partly wooded and fenced with 2 ponds and 2 storey 5 bdrm. brick house, bank barn and silo located near Hwy 401 just north of Milton. \$1,300,000. A. Lear-Coetgan, 8926-9218.



**A NICE COUNTRY HOME**  
Many extras, this 4 bdrm. home in the country but close to town. Extra large family room with patio doors to deck with hot tub. Fenced back yard with inground pool. Nice shade trees on large lot. Reduced \$299,900. Denzil Lawrence 878-8101, 826-9218.



**KISS THE LANDLORD GOODBYE!**  
Here's your opportunity to own a comfortable 3 bedroom home in Timberlea. Features include 4 and 2 piece bathrooms, finished recreation room with fireplace and spacious country kitchen with walkout to deck and fenced yard. \$208,500. Call Barb LaFleche 878-8101 to view.



**A HOME YOU WON'T WANT TO LEAVE**  
Spic and span year round home offers superb pool setting with outdoor built-in barbecue in large private yard. Central air, office, playroom & 2 4-piece baths are just a view of the indoor features. \$279,900. Denise Kerstake 878-8101.



**SAVE! SAVE! — NOW \$298,900.**  
This Georgetown country home on a huge lot is priced well below replacement cost. See it to appreciate the quality and size of its 3+ bdrms., eat-in kitchen & separate dining & living rooms. Renee Harrold 878-8101.



**A SURE WINNER \$269,900.**  
Careful buyers, be sure to see the traditional 4 bdrm. beauty, choice location, brick walkway & patios, fully fenced pie-shaped lot, main floor family rm. & laundry, 3 washrooms & more. Call today. Sandy Del Papa 878-8101.



**IT'S A SMALL PRICE—\$239,900!**  
You'll pay for the 5 bdrm. home, main floor fam. & laundry, 3 baths, finished rec. room, upgraded broadloom, central vac, alum. eaves, soffits & fascia and inground pool & must to view call Barbara Crowe 878-7875.



**TOWNHOUSE BARGAIN**  
\$143,500.00. Why pay for decorating you are not really happy with. Buy this home and decorate to please yourself. It has 3 bedrooms, 1-1/2 baths and an unfinished basement. Les Bunker 878-8101.

**JUST LISTED INDUSTRIAL SITE**  
\$450,000. Superb location on Nipissing Rd. with good access to 401. Zoned M-1 this 1 acre (approx.) parcel is rectangular with about 179 ft. frontage. For more details contact Sandy Del Papa 878-8101.

**4500 SQ. FT.— FOR LEASE**  
Zoned C-3 on Highway 26 (just north of 401 behind Chateau Restaurant) incl. 2 front offices, 3 transport truck service bays with 13.6 ft. overhead doors, 2 washrooms & mezzanine (sm. office & storage) call Sandy Del Papa 878-8101.

**SUCCESSFUL FAMILY BUSINESS**  
\$86,000. Video Rentals games etc. Busy indoor mall; all stock & chattel. Owner retiring will assist new owner to get established. For more details of business and chattels contact Bill O'Neill 878-8101.

**BUSINESS LOCATION**  
500 sq. ft. of space for your office or storefront business. Good downtown traffic location. \$500.00. per month. For details call Ed Proveau 878-8101.



**OPEN HOUSE SUNDAY, OCT. 29, 1:30-4 P.M. 753 COULSON JUST LISTED—MOVE IN BEFORE CHRISTMAS!**  
Open presents before the fire in the main floor family room. Serve turkey in the separate dining room. This home is spotless, spacious and features 3 oversized bedrooms, 3 baths and more. Quiet Timberlea location. Asking \$226,900. Call Barb LaFleche 878-8101 for your personal inspection.



**SPOTLESS NEW LISTING**  
Don't miss the opportunity to view the value in this 3 bdrm. townhouse. Bright eat-in kitchen, separate dining rm., private fenced rear yard, track lighting. Very nice decor and much more \$149,900. Marg Swain 878-8101.

**388 MAIN ST. EAST  
878-8101  
(Tor. Line) 826-9218  
Toll Free 1-800-263-4176**



**SECRETARIES**  
Gayle Ford • Shirley Langdeau  
Wendy Girard • Shirley Botterill  
Ginger Tiede

- LAMONT LEONE — Manager\*\***
- Karen Irvine\* 876-4154
  - Donna Syms\* 878-3112
  - Les Bunker\* 519-856-4352
  - Denzil Lawrence\* 878-1944
  - Margaret Swain\* 878-7687
  - Ed Proveau\* 876-1707
  - Joyce Hagevik\* 876-1084
  - Inge Winther\* 853-1990
  - Norma Proveau\* 876-1707
  - Brenda Johnson\* 878-5788
  - Paula Rasmussen\* 854-0176
  - Rudy Arbeiter\* 878-3558
  - Audrea Lear Costigan 878-9151
  - Bill O'Neill\* 878-2679
  - Sandi Kinsale\* 878-0392
  - Sandy Del Papa\* 878-5229
  - Barbara Crowe\* 878-7875
  - Sandra Logie\* 878-1881
  - Jean Thomson\* 878-0767
  - Renee Harrold\* 878-4526
  - Mark Symonds\* 822-5886
  - Barbara LaFleche 878-1406

**It's you that counts the most.**