

RE/MAX

Miltowne Realty Corp.
 22 Ontario St. South 878-2365

Gary Thomas
 Broker/Owner

FREDA LAWRENCE 878-4860
 LORNE GUNDLACK 878-3155
 MAURICE MILJOUR 676-4577
 AUDREY NEWELL 878-5339
 LORRAINE RANDALL 828-SOLD
 WAYNE WARNER 878-1084
 LINA WARNER 878-1084
 ANGELIKA BEISNER 878-7057
 DOUG BUTSON 878-2054

RICHARD HIERMAN 878-5806
 CAROL M. BROOKS 875-0067
 CAROLE STONHILL 876-4913
 LINDSAY McLAREN 854-2451
 KEN NEWELL 878-5339
 REJANE PETROFF 875-1515
 JEAN SNOWDEN 878-3155
 ALAN BROOKS 875-0067

STELLA HALL 878-4339
 CLAYTON HACKENBROOK 875-0771
 BETTY INGLE 827-4286
 MIKE MORGAN 878-8093
 PAUL PAGE 878-2905
 GAIL PULLEN 878-0110
 PHIL PRESTIDGE 878-6924
 BARBARA MORGAN 878-8093
 BETTY BRADING 878-6716



DOUG J. BUTSON

Office 878-2365
 Tor. Line 826-1030
 Res: 878-2054



CAMPBELLVILLE CAPE COD

A Bright country commuter home on 1.97 acre lot. Space for pool, tennis courts etc. Quiet but not secluded. Away from Hwy 401 noise but still easy access. Well is 10 gal./min. Excellent future investment @ \$359,900.

MILTON LOT

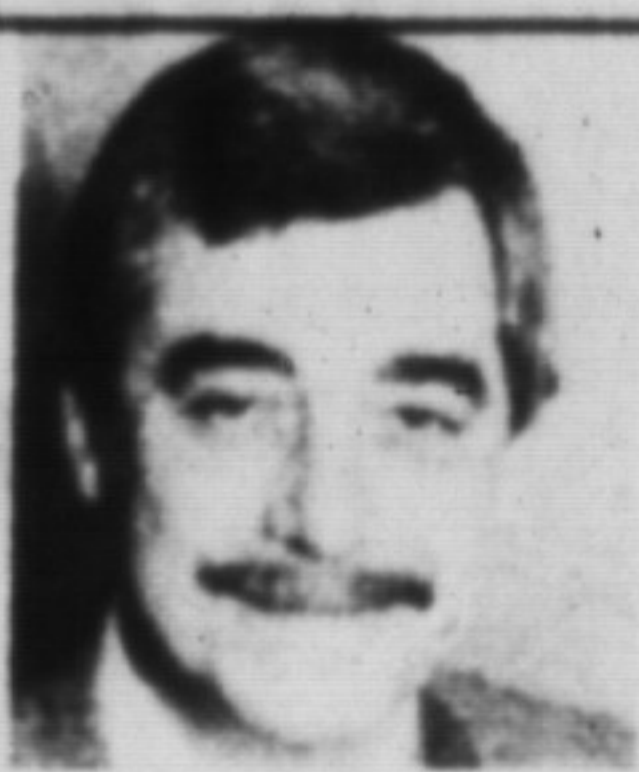
64 X 152
 \$165,000

SERVICE BUSINESS

One man
 Main St. operation
 all equip. and stock
 \$28,000

COMMERCIAL FOR LEASE

COMMERCIAL FOR LEASE
 1630 sq. ft. oak trim Offices - Wilson Drive
 7700 sq. ft. Office/Warehouse - Steeles Avenue
 1856 sq. ft. Vet. Clinic - Retail Sales Office - Derry Road.



Your Town & Country Connection

Wayne & Lina Warner

25 years of Real Estate knowledge to work for you!



Associate Broker

878-2365
 Bus.

878-1084
 Home

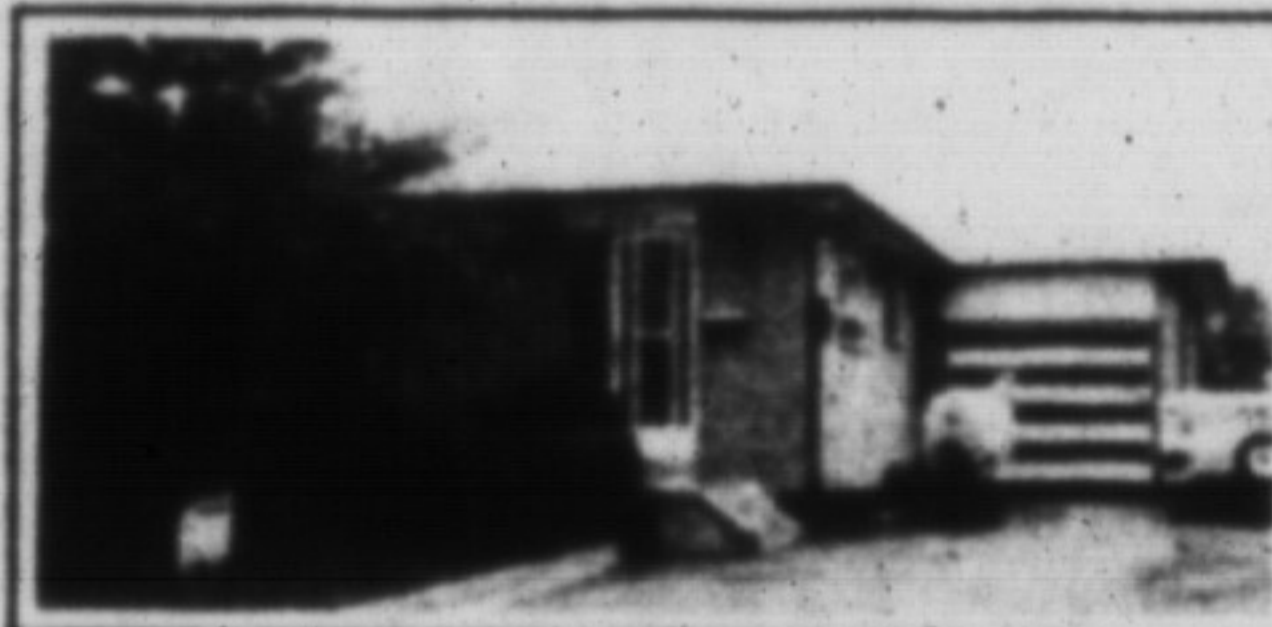
826-1030
 Tor. Line

Sales Representative



REDUCED TO \$179,900

This spacious and comfy air conditioned, 4 bedroom home is exactly what a large family needs... and close to schools.



A PLEASANT SURPRISE \$224,900.

awaits you at this unique bungalow. Features such as upgraded kitchen, ceramic flooring, inground kidney shaped pool with poured concrete patios and extra bedrooms on the lower level are just a few extras this lovely home has to offer. Call for an appointment with Lina or Wayne.



PRIDE OF OWNERSHIP HALTON HILLS \$314,900.

This lovely raised bungalow is a rare find on 2.3 acres and minutes to 401. Features include a spacious country kitchen with laundry facilities, picture windows, Florida room, separate dining room and fully finished lower level with walkout.

LINDSAY J. McLAREN

Office: 878-2365

Res: 854-2451

Pager: 878-2020

Tor. Line: 826-1030



PRESTIGIOUS SUBDIVISION

Unique colonial style 1-1/2 storey home on a very quiet private 2 acre lot. 2 storey front foyer leading to sunken living room. Kitchen has many built in appliances with centre island. Walk out from dining room to deck. 4 bdrms. Laundry room with separate entrance leading to finished area over garage. Ideal for in-law suite. Exclusive Brookville Estates. Please call

LINDSAY J. McLAREN Asking \$459,900.



SCENIC ENGLISH TUDOR

Located just south of Campbellville and up a winding maple lined driveway sits this impressive English Tudor home with its very own pond, tennis courts & inground pool. If surroundings make a home, this lushly landscaped scenic 4 acres in prestigious Campbellville Estates is the perfect executive residence. Some of the features include a formal living room and dining room, main floor laundry, fireplaces. To view this wonderful home please call

LINDSAY J. McLAREN Asking \$795,000.



HISTORICAL VICTORIA STREET

Restored 1 3/4 brick home with 4 bedrooms, 2 baths and 3 fireplaces in older Milton is one of Milton's historical homes. Featuring 3,000 sq. ft. plus, an enormous formal living room with t/p, large dining room, main floor family room with vaulted ceiling, brick fireplace, bar and walkout to deck. Kitchen has custom cupboards with built-in laundry area. MBR with t/p, 3 other spacious bedrooms, central air conditioning and air cleaner. An excellent home for family or entertaining complete with historical charm. For more information or an appointment to view, call

LINDSAY J. McLAREN WAS \$479,900. NOW \$439,900



SUPER VALUE

Located on a paved road just one mile south of Campbellville set on a 1/2 acre this country home is an excellent starter home with great potential. Featuring 3 bedrooms, large living room, 4 piece full basement, woodstove, eat-in kitchen, 4 piece bath and a separate 25' x 22' garage. Call for more details

LINDSAY J. McLAREN Asking \$171,900.



878-2365

Res: 335-8888

or: 826-1030

Gary Thomas
 Broker/Owner



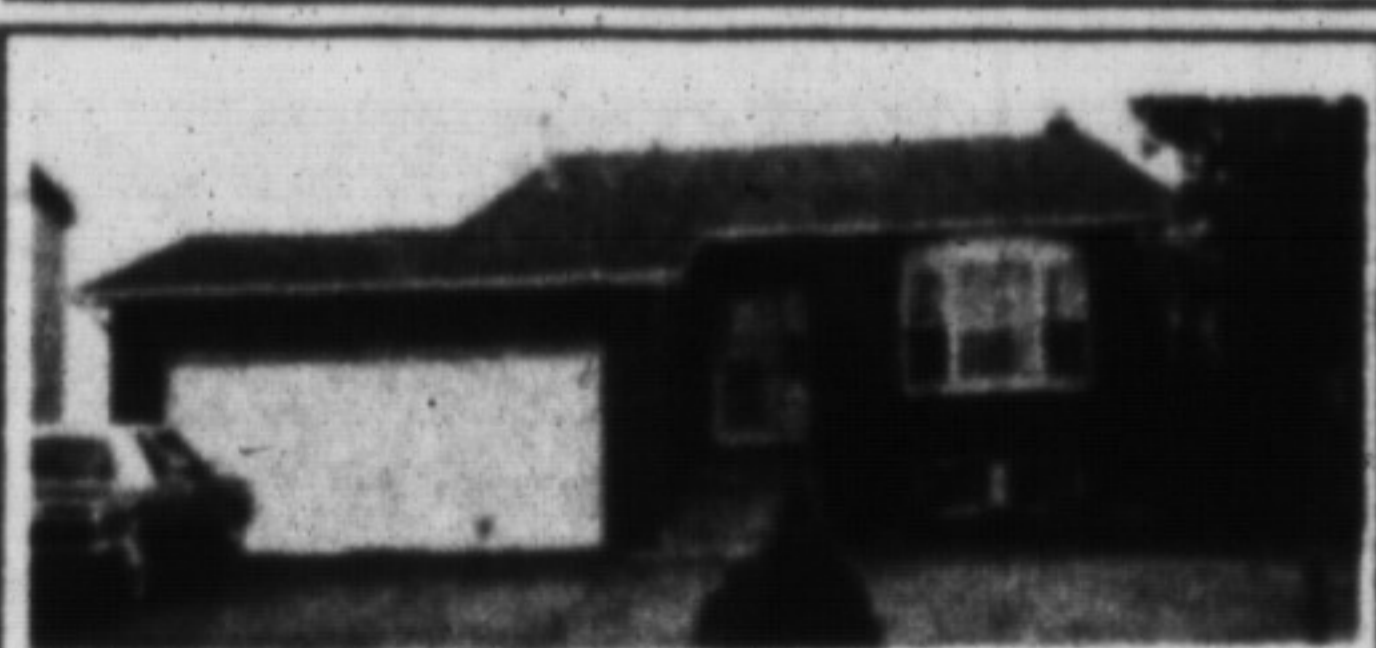
REDUCED \$379,000 ZONED INDUSTRIAL

Attractive ranch on 150' x 200' country lot. New parquet floor in living room and dining room, double granite F.P. Finished rec room and den, 2 1/2 car garage, mature spruce tree wind break. Call Gary Thomas for more details



WELCOME HOME

Very desirable area situated close to public and separate schools. Brick and aluminum raised bungalow, 3 main floor bedrooms, 4th bedroom or den in basement, family room on main level, 1, 1/2 baths, cedar deck and fenced yard. Gary Thomas 878-2365.



SUPER SUBDIVISION

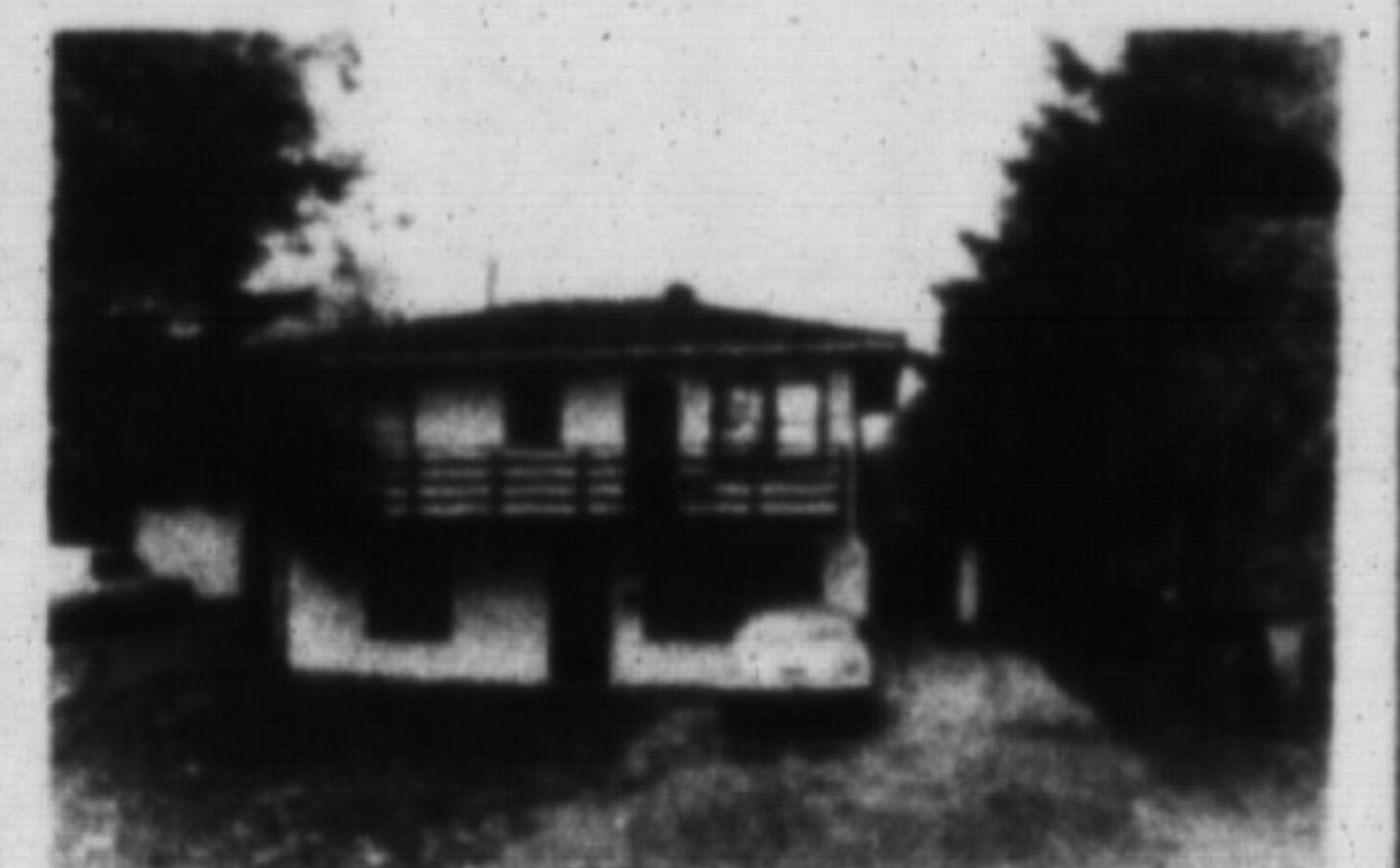
Timberlea backsplit on lovely street of fine homes, showroom condition, upgraded broadloom, 3 bedrooms, family room with fireplace, a walkout to fully fenced yard, interlocking walkway, paved drive and double garage \$244,500. Call Gary for viewing.



FAMILY APPROVED

This three bedroom semi in a young family area is within walking distance of grades 1-13. Spacious rooms, walkout from eat-in kitchen, 2 baths, proximity to schools, parks and shopping, single car garage and the practical comfort of central air conditioning all make this home a "must see" for younger families who wish to be close to what's happening. For more information call:

LINDSAY J. McLAREN Asking \$175,900.



WOODWARD AVE DUPLEX

Excellent investment opportunity with separate apartments on each floor located in mature area of town close to schools. For more details please call

LINDSAY J. McLAREN Asking \$189,900.