

BEST HOMES

The Canadian Champion

Milton, Ontario

October 25, 1989



CAMPBELLVILLE CAPE COD

Bright country commuter home on 1.97 acre lot space for pool, tennis courts etc. Quiet but not secluded- away from Hwy 401 but still easy access. Well is 10 gallons/minute. Excellent future investment. Asking \$359,900.
REMAX MILTOWNE REALTY CORP.
DOUG BUTSON 878-2365



GOING...GOING...BETTER HURRY...

Set on a quiet court close to park & school, this immaculate bungalow offers an eat-in kitchen with ample cupboards, sep. dining room, sunken living room with fireplace, and rec room plus huge games area in the basement. Complete family enjoyment. \$205,000.
REMAX MILTOWNE REALTY CORP.
JEAN SNOWDEN 878-2365



CUSTOM QUALITY IN TOWN

This large custom built home in one of our most desirable neighbourhood, offers the high quality workmanship the educated buyer will appreciate. Highlights such as main floor laundry and family room with fireplace, a 4th bedroom or study and master ensuite bath only begin to describe the features of this one-owner home. Listed for sale at \$299,900. For your personal viewing contact:

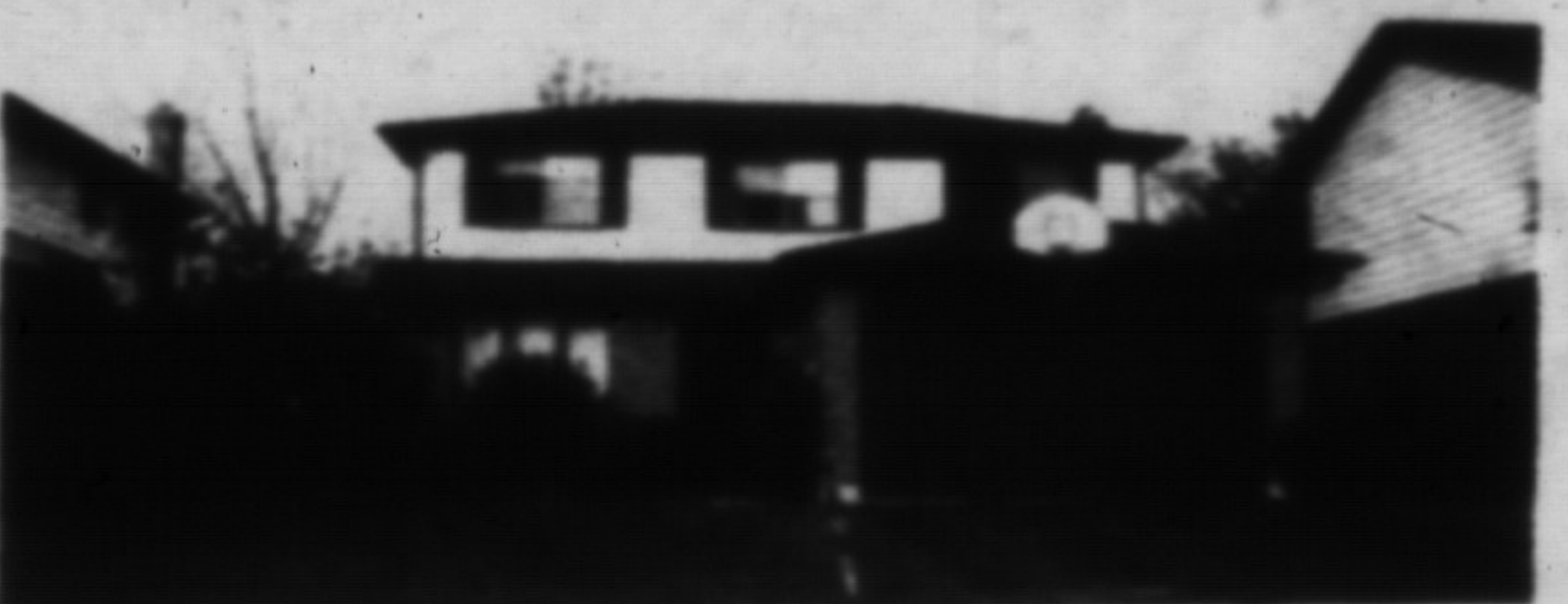
CENTURY 21 GOLDEN REAL ESTATE LIMITED
JAMES D. SNOW 878-4495 OR TOR. LINE 821-4764



JUST LISTED - PERFECT FOR CHILDREN

This 3 bedroom unit backing onto park features a walk-out from the kitchen, separate dining room and roomy master bedroom with double closet. Close to shopping. Offered at \$149,900. Call our office for more details about #65.

REALTY WORLD
W.J. McCRUDDEN 878-1133



LIFE AMONGST THE BIRCHS

Enjoy Christmas by the fire in this large 4 bedroom home with main floor family room, 3 baths and many upgrades, pool sized lot, quiet street in prime area. Call for further details. \$239,900.

ROYAL CITY REALTY LIMITED
CAROLE D. BUDWORTH 878-1158



NEED A QUICK CLOSING?

WE can accommodate you in this super semi. \$177,900. Value for your \$'s. Fireplace in living room, spacious eat-in kitchen, 120 ft. deep lot, finished rec. room, long paved driveway, super location.

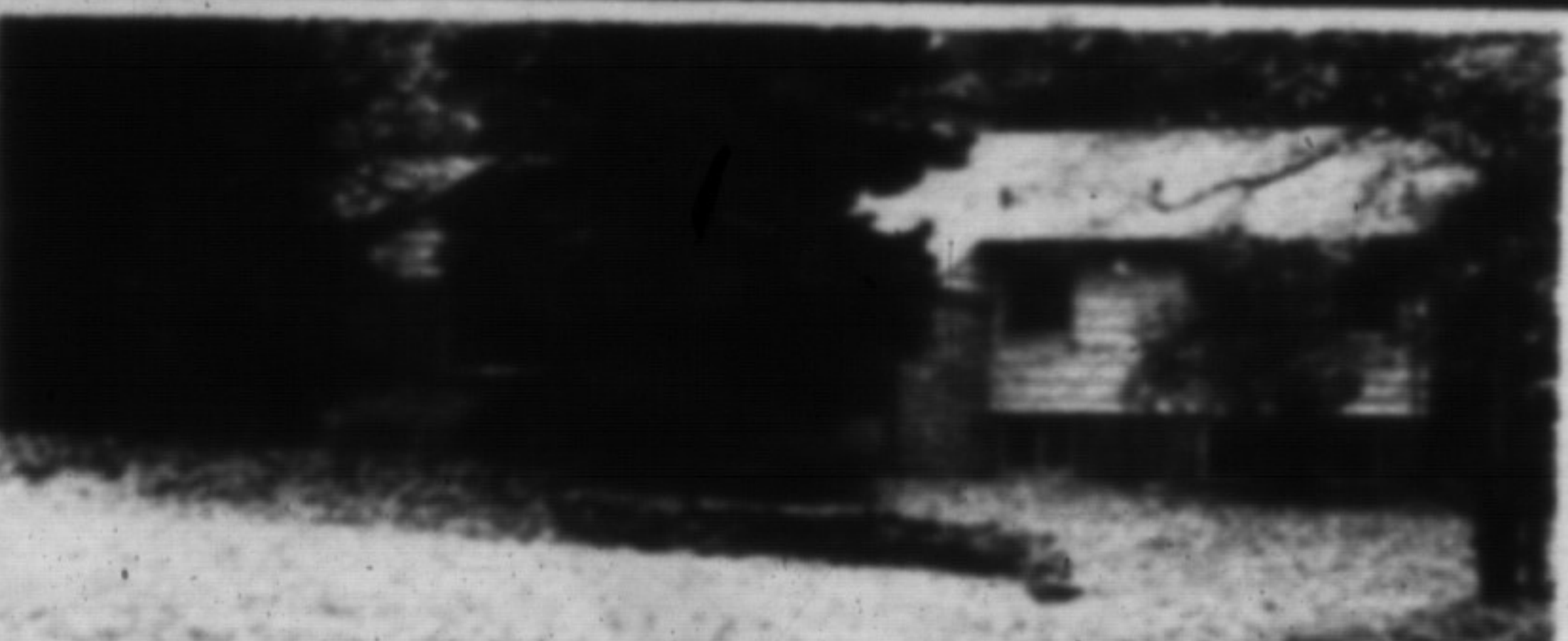
ROYAL LEPAGE
MARG SWAIN 878-8101



CAMPBELLVILLE

In a class by itself. Built by one of Milton's prestigious builders, this truly elegant home awaits your inspection. Enormous kitchen with walkout to large deck. Bevelled French doors on the main floor. Beamed ceiling and fireplace in the family room. Corner jacuzzi in master ensuite. Central air and much more.

CHRISTIE & WOODS REAL ESTATE LTD.
MARG CHRISTIE 878-2095 OR 875-2443



OPEN HOUSE SUN. OCT. 29 1-4

STREAM, RAVINE, LARGE TREES...

Located min. from Milton. This spectacular 6 acre property, surrounded by prestigious estates is definitely country. Has a 3 bdrm. home plus a 900 sq. ft. sep. & self contained bldg. Ideal for ge-uest house. Asking only \$499,900.

Countrywide Campbellville Realty Inc.
KATHLEEN PERFECT 854-2294