

# MARTEL



### CUSTOM BUILT 5 BDRMS.

This unique executive home is 3,100 sq. ft. it is being built on a 74 x 150 lot with many mature trees. If you want a brand new home that is walking distance to the lake and shopping this is for you. There is still time to choose your favorite colors. \$534,900. For details call JUNE or DAN DELIC to view at 842-0214 home 338-7707 business.



### LOTS OF LOT ONLY \$299,900

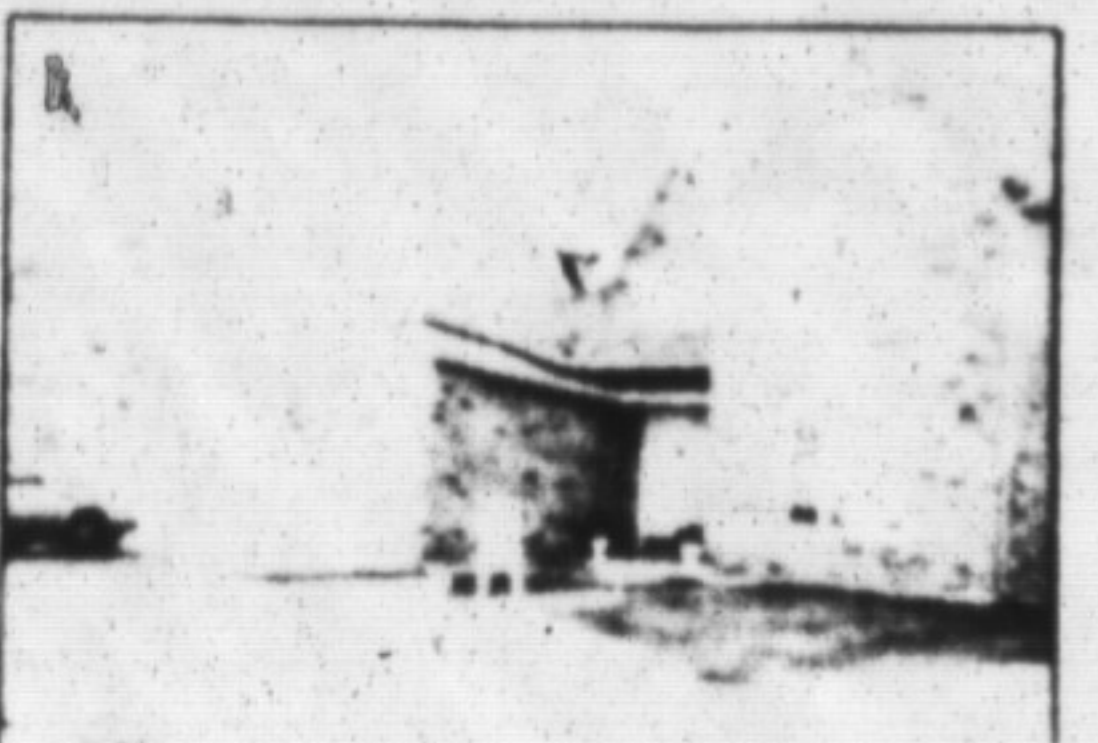
This charming 1 1/2 storey home is in mint condition. The 100 x 273 property is impressive with its many mature trees. Located in a desirable area is available call JUNE or DAN DELIC to view at 842-0214 home 338-7707 business.



NEW LISTING

### HOME SWEET HOME

Fenced and landscaped. This home is perfect for the family seeking location. Schools are across the street and stores close by. Main floor den with fireplace and finished rec. room with bar are only a few of the features. \$192,500. Call DAN or JUNE DELIC to view 338-7707 or res. 842-0214 business.



### QUALITY AND ELEGANCE

Located on a quiet road and close to three major highways. This 3,000 sq. ft. home has many upgrades, walk out from kitchen to large deck, granite tiles, marble fireplace. Florida living in kitchen, main floor den. \$399,900. For more information call June or Dan Delic at 338-7707 or res. 842-0214.



JUNE or DAN DELIC  
Office: 338-7707  
Res: 842-0214



We're Your Home Team  
2163 SIXTH LINE  
OAKVILLE

## FURLONG COLLINS MANDERSON & GUNDING

Offices in Milton,  
Brampton,  
Halton Hills

# 878-8123

To Keep You Informed:  
**MORTGAGE RATES THIS WEEK**

Your full  
service  
Law Firm

BANKS	VARIABLE RATE	6 MONTHS	1 YEAR	2 YEARS	3 YEARS	4 YEARS	5 YEARS
Cdn Imperial	13 1/2%	13 1/2%	13 1/2%	12 1/2%	11 1/2%	11 1/2%	11 1/2%
Bank of Montreal	13 1/2%	13 1/2%	13 1/2%	12 1/2%	11 1/2%	11 1/2%	11 1/2%
Laurentian Bank	n/a	13 1/2%	13 1/2%	12 1/2%	11 1/2%	11 1/2%	11 1/2%
National Bank	n/a	13 1/2%	13 1/2%	12 1/2%	11 1/2%	11 1/2%	11 1/2%
Bank of N.S.	13 1/2%	13 1/2%	13 1/2%	12 1/2%	11 1/2%	11 1/2%	11 1/2%
Royal Bank	13 1/2%	13 1/2%	13 1/2%	12 1/2%	11 1/2%	11 1/2%	11 1/2%
Toronto-Dominion	13 1/2%	13 1/2%	13 1/2%	12 1/2%	11 1/2%	11 1/2%	11 1/2%
<b>TRUST COMPANIES</b>							
Calbot Tr.	n/a	13 1/2%	13 1/2%	12 1/2%	11 1/2%	11 1/2%	11 1/2%
Canada Trust	13 1/2%	13 1/2%	13 1/2%	12 1/2%	11 1/2%	11 1/2%	11 1/2%
Central-Guaranty Trust	13 1/2%	13 1/2%	13 1/2%	12 1/2%	11 1/2%	11 1/2%	11 1/2%
Co-operative Trust	n/a	13 1/2%	13 1/2%	12 1/2%	11 1/2%	11 1/2%	11 1/2%
First City Trust	n/a	13 1/2%	13 1/2%	12 1/2%	11 1/2%	11 1/2%	11 1/2%
General Trust	n/a	13 1/2%	13 1/2%	12 1/2%	11 1/2%	11 1/2%	11 1/2%
Guardian Trust	14 1/2%	13 1/2%	13 1/2%	12 1/2%	11 1/2%	11 1/2%	11 1/2%
Household Trust	n/a	13 1/2%	13 1/2%	12 1/2%	11 1/2%	11 1/2%	11 1/2%
Montreal Trust	n/a	13 1/2%	13 1/2%	12 1/2%	11 1/2%	11 1/2%	11 1/2%
National Trust	13 1/2%	13 1/2%	13 1/2%	12 1/2%	11 1/2%	11 1/2%	11 1/2%
Premier Trust	n/a	13 1/2%	13 1/2%	12 1/2%	11 1/2%	11 1/2%	11 1/2%
Royal Trust	n/a	13 1/2%	13 1/2%	12 1/2%	11 1/2%	11 1/2%	11 1/2%
Standard Trust	n/a	13 1/2%	13 1/2%	12 1/2%	11 1/2%	11 1/2%	11 1/2%
Vanguard Trust	n/a	13 1/2%	13 1/2%	12 1/2%	11 1/2%	11 1/2%	11 1/2%
Duca Credit Union	n/a	13 1/2%	13 1/2%	12 1/2%	11 1/2%	11 1/2%	11 1/2%
Jet Power Credit Union	13 1/2%	13 1/2%	13 1/2%	12 1/2%	11 1/2%	11 1/2%	11 1/2%

NOTES: \*\* INTEREST RATE CHARGED SUBJECT TO ADJUSTMENT DURING TERM OF MORTGAGE.  
PLEASE CONSULT INSTITUTION FOR TERM OR YEARS AVAILABLE.  
R.D.R. RATES ON REQUEST R.D. RENEWALS ONLY  
op. OPEN N/A NOT APPLICABLE  
NOT QUOTING

RATES TAKEN  
OCTOBER 4, 1989

FISCAL AGENTS SPECIALIZES IN TRUST AND LOAN INVESTMENTS AND ALSO SUPPLIES FREE CONSUMER INFORMATION ON THESE INVESTMENTS. PHONE 844-7790

# NRS NATIONAL REAL ESTATE SERVICE



### RATED "PQ" PERFECTLY GRAND!

Century home on 95 x 123 foot lot. The home features 10' ceilings on the main floor and 9' upstairs. Extensive renovations include new Belvedere kitchen, 3 new bathrooms. (Guest bathroom features a whirlpool tub and marble tile), new porch, upgraded wiring, new plumbing, second staircase - and much more. Outdoors is a 3 car garage with 300 sq. ft. loft. If you love older homes but like modern convenience - call today to view this home. Ask for Barbara Malakou at 875-2677.

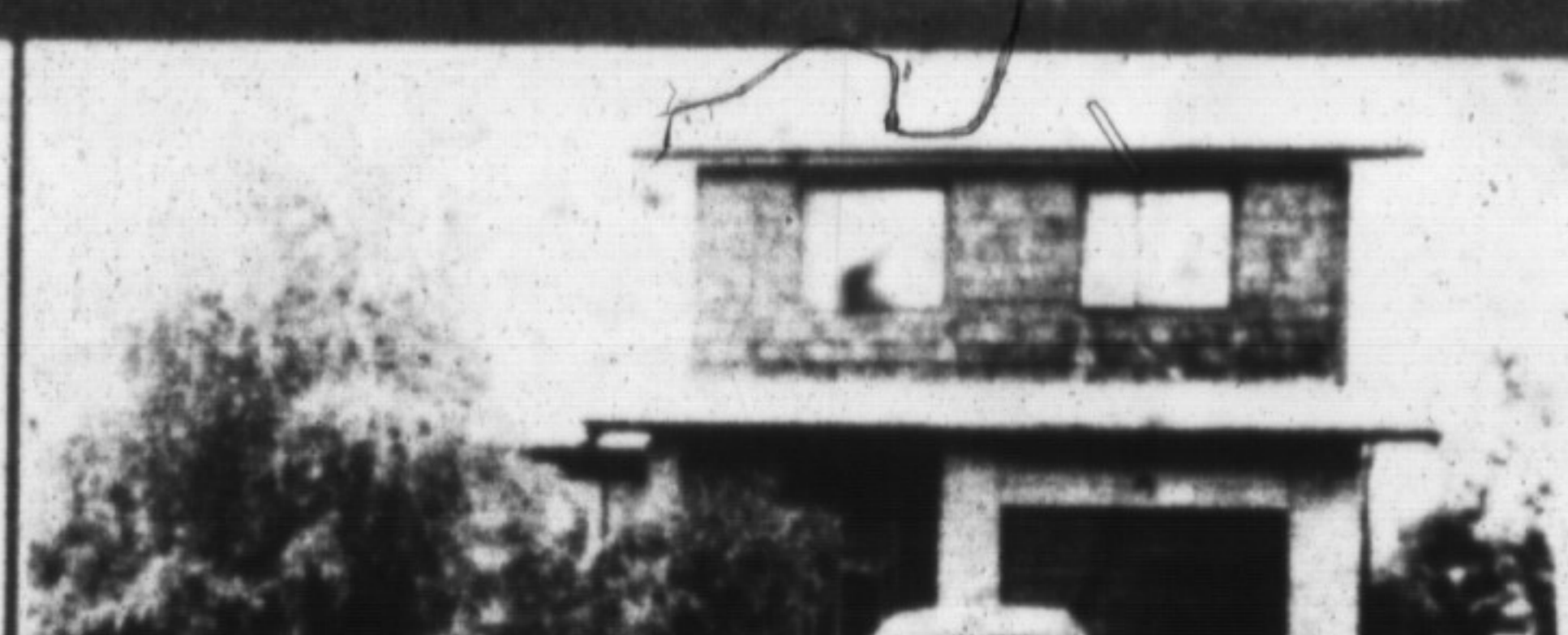
### DICK'S PICKS

- Your own business on Main Street with a solid brick building and paved rear lot parking - now reduced to only \$205,000. and available immediately.

- 3 bedroom backsplit in Timberlea area with inground pool and close to all schools - now reduced to \$232,500.

- 4 bedroom 2 storey - Dorset Park - large home, large lot - nice location - \$214,500.

For information on the above listings please call  
Dick Belford at 875-2677.



### "PSSSSSSST!! WANT A GOOD BUY?"

4 bedrooms, 1 1/2 baths, main bathroom upgraded with new cupboards, new shower and jacuzzi tub. Upgraded eat-in kitchen. Lovely pine paneled recreation room with bar and wood burning stove. Close to schools and parks. 5th bedroom or office in basement. Fenced yard with partially covered, pressure treated deck. Priced at only \$229,500. For your personal inspection please call Iv R. Darbin at 875-2677 or Res. 878-4866.



### IF IT'S CHARACTER YOU WANT.....

then you need to see this beautifully restored 2 storey detached home in the older established part of Milton. It boasts classic pine floors restored throughout. High ceilings, 3+ bedrooms, all tastefully appointed. For additional information or to view this classic beauty please call Deborah Gibson at 878-3565/875-2677. Priced at \$226,900.

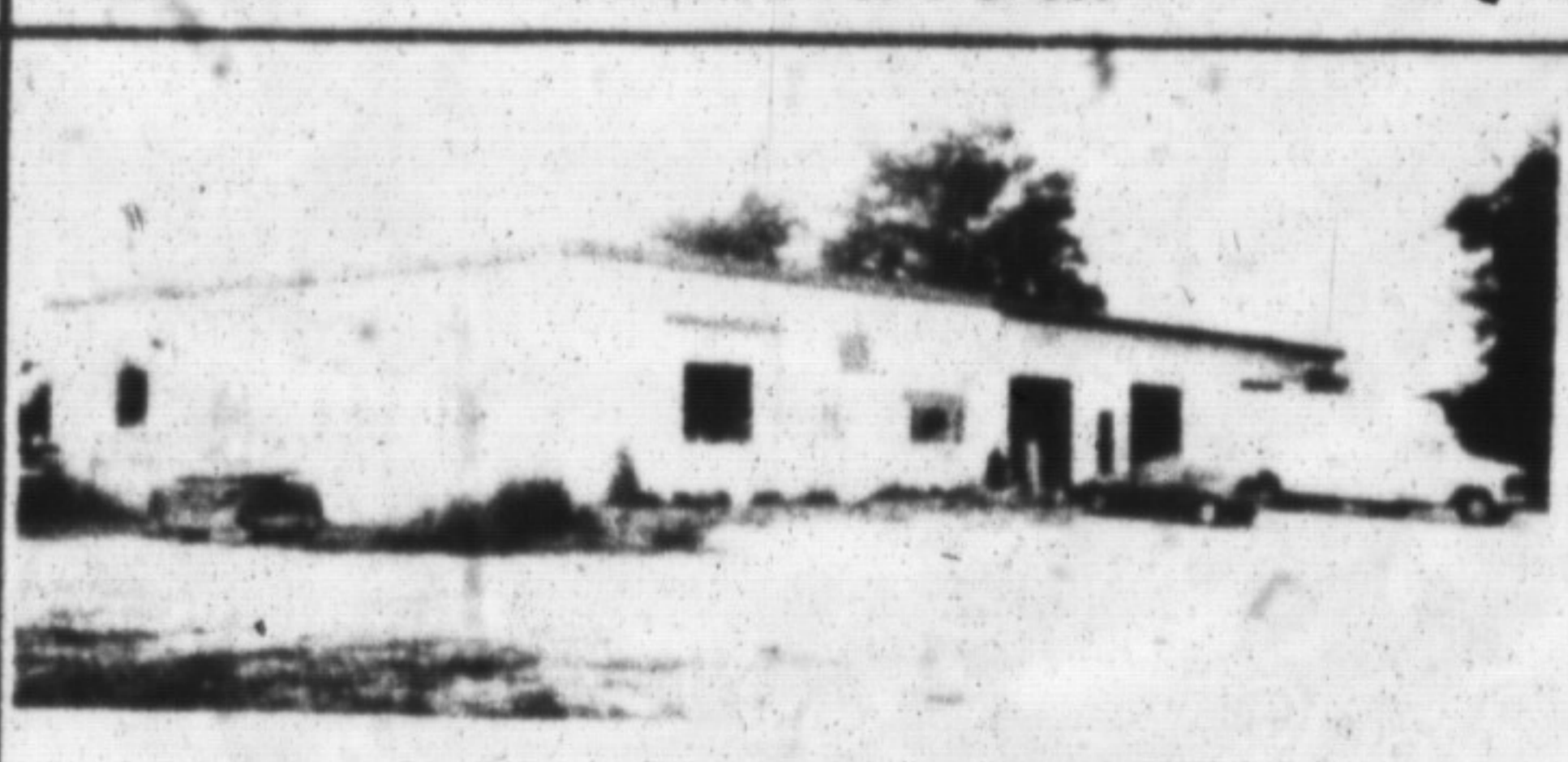
### SEMI-DELUXE

This is your dream come true; 3 bedrooms, 1 1/2 baths, eat-in kitchen, separate living & dining rooms, finished basement, central air & much more. All this for ONLY \$182,900.

### PRIDE IN OWNERSHIP

starts from the first day you move into this Spacious Harding Home; 3 bedrooms, large kitchen, combination living and dining rooms. Also a main floor family room with fireplace and walkout to built on Florida room. All this and much more for only \$245,000.

To view these properties simply call Jeff Wright  
at 875-2677 or 878-5110.



### "3+ ACRES, 1M-1 6000' BUILDING, \$865,000.

7 miles from Milton on Highway 25 includes super two family house. Building has four separate units. Drive in doors. Finished showroom with 3 offices. 550 volts. Expansion potential. Large gravelled parking area. Outside storage. Excellent for rental investment or manufacturing. family business. Call Gar Aepden 875-2677 or toll free page 1-551-7011.

# NRS MILLPOND REALTY INC., REALTOR

AN INDEPENDENT MEMBER BROKER

350 Main Street East, Milton, Ontario L9T 1P6

Telephone: (416) 875-2677