

JOYCE SCOTT REAL ESTATE INC.

**JSR**

"THE PERFECT BLEND OF LIFESTYLES"

"JOYCE BOULEVARD"



**REALTORS REMARKS:** This beautiful 3 bdrm. home is loaded with extras. European designed kitchen, Breakfast room walk out to Sun room. Rec. room requires no furniture. Its all built in even comes with pictures on wall. Luxurious wet bar with hot/cold water, exercise ladder. Extras too numerous to mention. Exceptionally well maintained home. Price \$235,900.

- \* Immaculate
- \* Separate Dining room
- \* Breakfast room or Family room
- \* Workshop
- \* European Style dream kitchen
- \* Central Vac.
- \* Roof Shingles
- \* Guaranteed 25 yrs.

ARCHITECTURAL DESIGNED LANDSCAPING

To show these properties is to sell these properties....

Call JOYCE SCOTT.....TODAY!

Joyce Scott Real Estate Inc.

878-1526

"BEAVER COURT"



**REALTORS REMARKS:** Extensive work has gone into this easy care for landscaping. Immaculate condition. Lovely brick fireplace enhances the Living room. The kit lends a pleasant bright atmosphere while cooking with walk out to a beautiful designed deck and patio. Built in a pleasing Grey brick and contrasting with Rustic Red Tile walkway.

- \* 3 bedrooms
- \* Central Air
- \* Finished Rec.
- \* Large Lot
- \* 47.44' x 118.29' yard
- \* Separate dining room
- \* Brick Barbecue
- \* Fully fenced

Price \$189,900



Owner/Broker

# The fall is the right time to fix overgrown gardens

Oftentimes new homeowners inherit a mature and overgrown garden. When a garden has been allowed to become overcrowded and unruly, it will require a lot of work to get it back into presentable condition.

Instead of starting fresh and clearing everything away, it's best to make as few changes as possible until you know what is there. Don't start digging haphazardly with a spade and fork, tossing everything out.

A reliable way to go about finding what grows where and when is to devise some

sort of map-calendar, so you can keep track of what is happening over a period of at least one year. Chart the start of each plant's flowering by jotting down its location, size, colour and whether or not it is overcrowded or can be dug up later and divided.

The fall is the time to follow through on your replanting project. In the meantime, you can order some of the new plants you may want to bring into the landscape.

Most perennials can be improved by being dug out and divided into smaller clumps. Those which bloom in the spring or early summer should be dug out and divided in the fall.

Those which produce their flowers in the fall, should be dug out and divided in the spring. If you plan to change an area which has been planted with a creeping, ground-covering plant variety, these plants may be lifted, divided and reset in the spring.

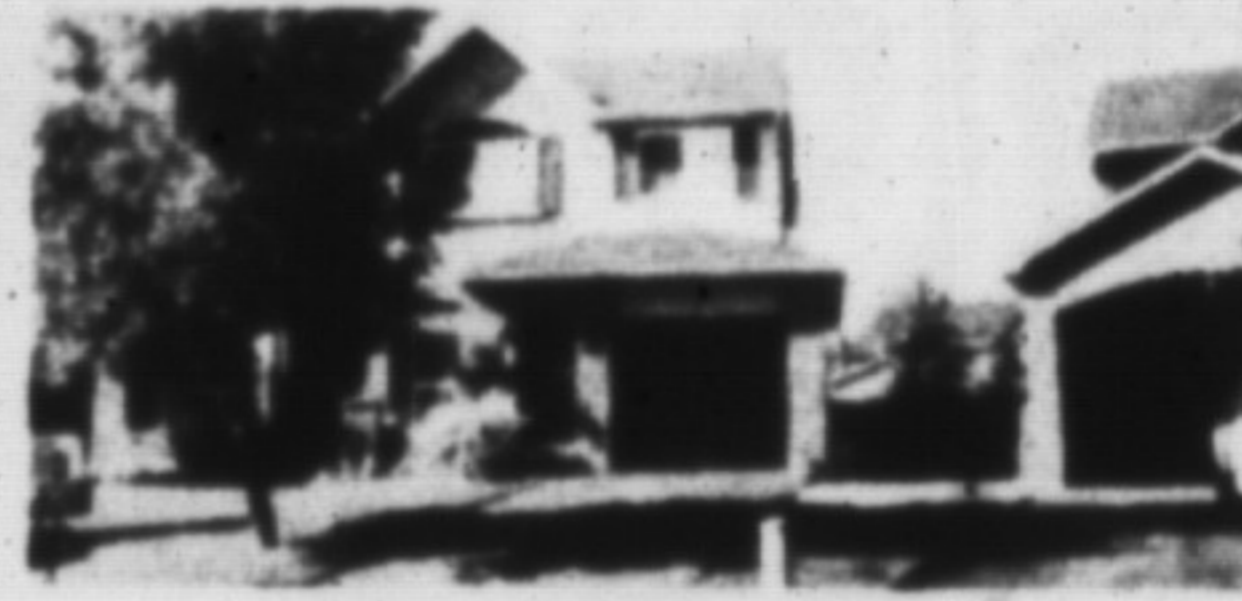
When re-designing an older garden, the shrubs and trees must be considered along with the flowering perennials and foliage plants. An orderly state can often be restored to an overgrown garden with some heavy pruning in the early spring before new growth begins.

Most hedges may be cut to 12 inches from the ground. Small trees and branches may be topped back and lateral branches given a thinning and shortening. Those shrubs which grow in a clump formation and have developed weak canes and shoots will survive when they are cut right back to the ground level.

When a shrub has been given a drastic pruning, it will require two to four years to come back to its original healthy form, but many times a more vigorous, healthy shrub is created because of the well-established root system.

For shrub roses and the climbers, the heavy, old canes should be cut out right at the soil level to allow young shoots to develop faster. With roses, the time for cutting-back is either in the early spring or immediately after blooming.

**White Oaks REALTY**  
LIMITED REALTOR  
1131 Nottingham Gate Oakville



**AN ELEGANT HOME**  
New cushion floors, professionally decorated, upgraded Ray wall cupboards, interlocking brick walkways plus so much more. Please call Margaret McCarron 825-3820.

825-2525

**CHRISTIE & WOODS REAL ESTATE LTD.**  
189 Main Street, Milton 878-2095

**CAMPBELLVILLE**  
In a class by itself. Built by one of Milton's prestigious builders, this truly elegant home awaits your inspection. Enormous kitchen with walkout to large deck. Beveled French doors on the main floor. Beamed ceiling and fireplace in the family room. Corner jacuzzi in master ensuite. Central air & much more. For your personal inspection call Marg Christie 878-2095 or 875-2443.

**SOLD by Tim Nevins**  
**794 COULSON AVE.**  
Make that move to a detached home with 3 bedrooms, 2 baths, finished basement, backing onto a park. Call Tim Nevins at 875-1263 or 878-2095. \$212,000.

**SOLD by Tim Nevins**  
**ALL BRICK EXECUTIVE**  
3 bdrms., fam & LR w/F.P., Prof. finished basement wet bar plus 4th bdrm., 2 walkouts to pool sized lot. Central vac and air plus many more upgrades. Call Tim Nevins at 875-1263 or 878-2095.

**ALL BRICK CUSTOM HOME**  
To be built on a treed lot in Milton. 4 bedrooms, fireplace, main floor family and laundry room. You can pick your own colours. Call Tim Nevins for all the details. 875-1263 or 878-2095.

**SOLD**  
**VENDOR TRANSFERRED LOOKING FOR OFFERS**  
Don't miss out on this opportunity to own this beautiful 2 storey home. Situated on a quiet avenue and backs onto a park. This 3 bedroom home has been freshly painted and trimmed. Finished rec. room, w/o to deck and large master bedroom with double closet are but some of the features this home has to offer. It is a must see. Priced to sell at \$192,500. Don't hesitate to call Cam Gall today for your personal inspection. 878-2856 or 878-2095.

**ATTENTION LAND OWNERS!**  
If you are the owners of 50-100 acres of land we may have an immediate buyers. Thinking about selling then give Yvonne Christie a call 878-2095.

**LOTS**  
Building Lot in town, private crescent nicely treed. \$124,900. Call Tim or Marg 878-2095.  
3/4 acre Lot on Woodward Street. Close to downtown. \$159,000. - **SOLD** by Tim and Marg.

Yvonne Christie Broker Owner 878-2095  
Tim Nevins 875-1263  
Allan Christie 878-2095  
Cameron Gall 876-2856  
Margaret Christie 875-2443

**HOMELIFE**  
**SERVICE WITH INTEGRITY**  
**HOMELIFE REALTY CENTRE LTD.**  
is now offering **MORTGAGES**  
- 1st, 2nd, 3rd, & refinance mortgages  
- up to 90% financing  
- quick service and approvals  
- competitive rates  
**FOR ALL YOUR MORTGAGE NEEDS**  
**CALL SANDY NOW**  
**896-2482**  
Thinking of Expanding Your Horizons?  
**WANTED**  
- Career-minded Real Estate People with a WINNING ATTITUDE and a desire to learn are needed at **HOMELIFE REALTY CENTRE LTD.**  
- No Desk Fees  
- House Mortgage Dept., Appraisal Dept. excellent commission split up to 100%  
- National Referral Service  
- great office location and facilities  
- excellent Training Program to develop your Real Estate Marketing skills  
**FOR AN APPOINTMENT CALL:**  
**896-8966**  
3153 HURONTARIO ST. MISSISSAUGA  
1 MILE SOUTH OF SQUARE 1  
**IT'S WHAT EVERYONE'S LOOKING FOR!**

**Doug Meal, Sales Rep.**  
Res. 877-6279  
Toll Free Pager 1-551-9094  
**THIS TOWNHOUSE IS A '10'**  
Well-maintained 3 bedroom townhouse, private rear yard, 90% finished basement. Newly decorated kitchen, maple flooring through hall & dining room. Includes own garage, also 4 pc. & 2 pc. bath. Asking \$154,900. A pleasure to view. Make an offer. Call Doug Meal 878-0300. NRS9169  
**NRS NATIONAL REAL ESTATE SERVICE**

**RE/MAX COUNTRY SPECIALISTS INC.**  
An Independent Member Broker  
**454-2907**  
**MILTON HORSE COUNTRY**  
Pick a winner! Brick Victorian Circa 1900 restored with a mid-western flair. Outstanding 2 storey pine kitchen with wide plank pine floors. Spacious living room, dining room, 2 wood stoves, 3 bedrooms, 2 baths, bank barn has 14 new stalls. All on 67.2 gorgeous acres. Close to 401 and Mohawk. Bet on your future. \$675,000.  
**Call CAM or GLORYA EADES**  
Sales Rep. Broker  
**(416) 454-2907**  
**(519) 927-3214**

If I had a hammer...you could build a dream on this 12.5 acre lot just 5 mins. to Hwy. 401. Asking \$329,900. Call Iona Nilsson at 888-8888 res. 854-9883