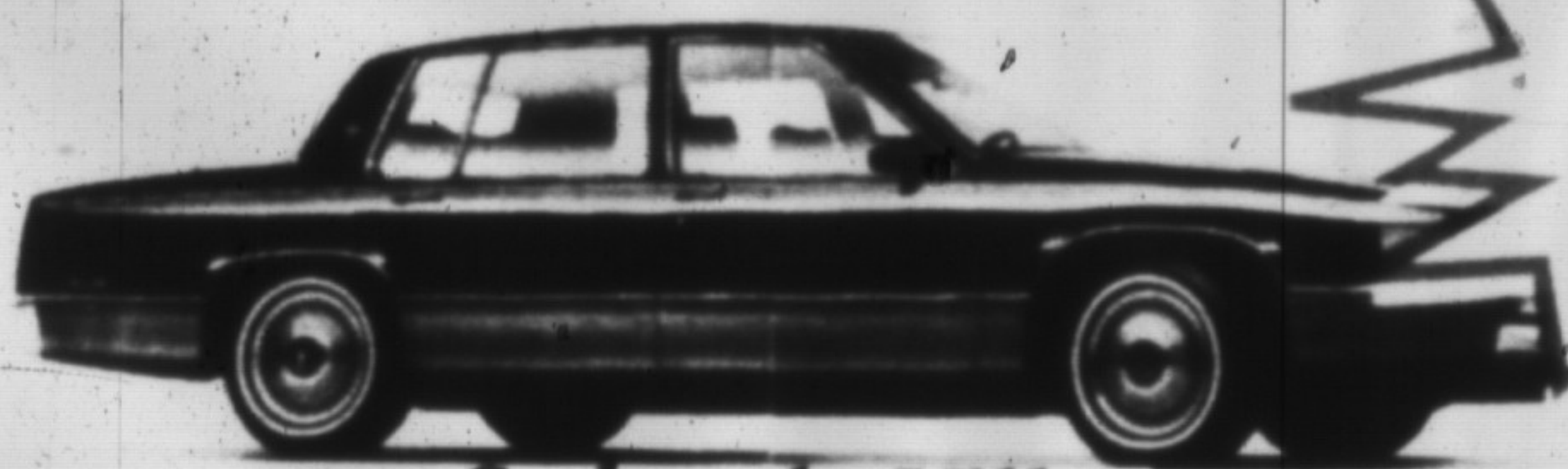


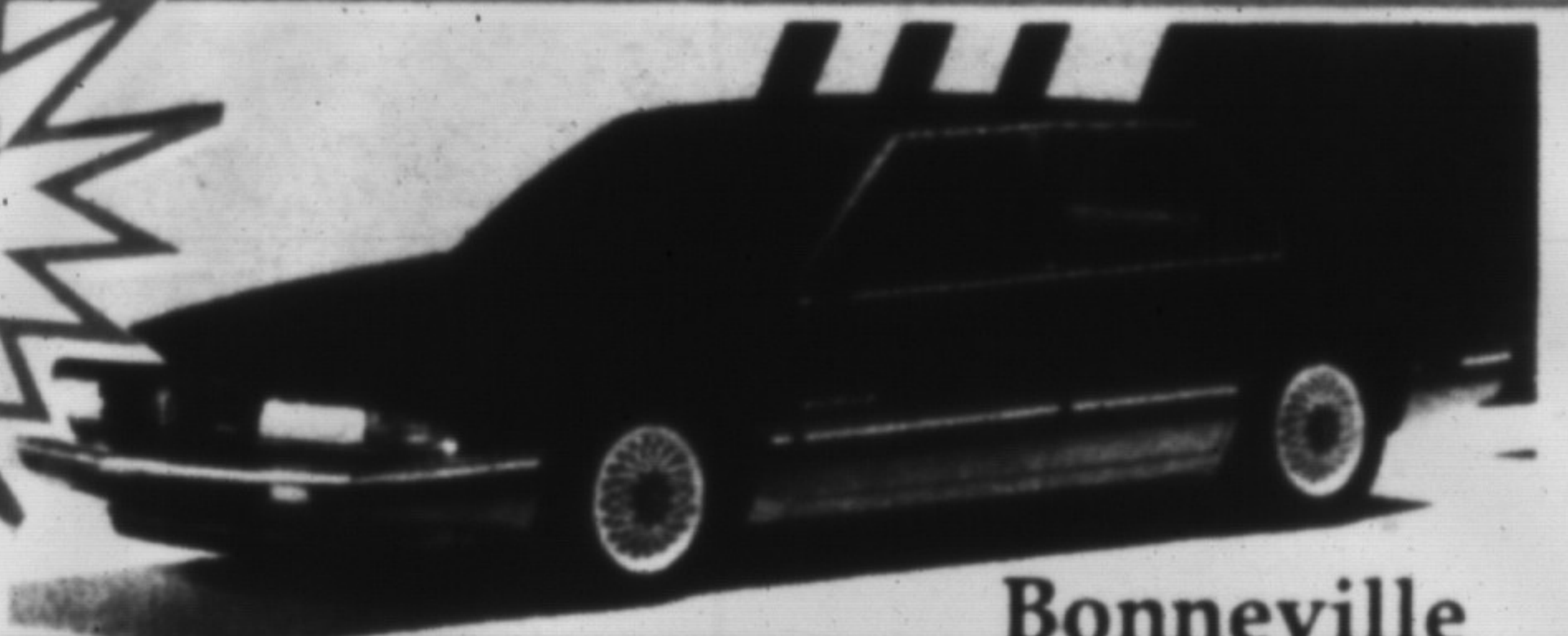
1990 Auto Preview

OFFICIAL ANNOUNCEMENT
September 28th, 29th, & 30th

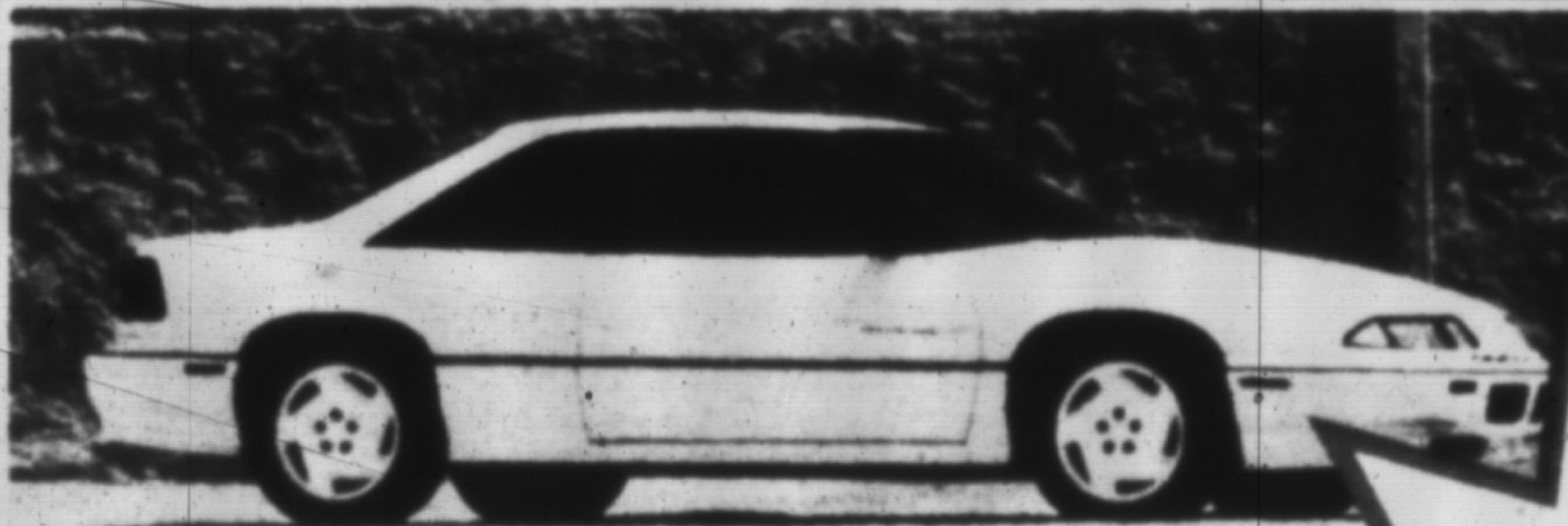


Sedan de Ville

Soon to arrive the All New 1990 "People Carrier" Transport



Bonneville

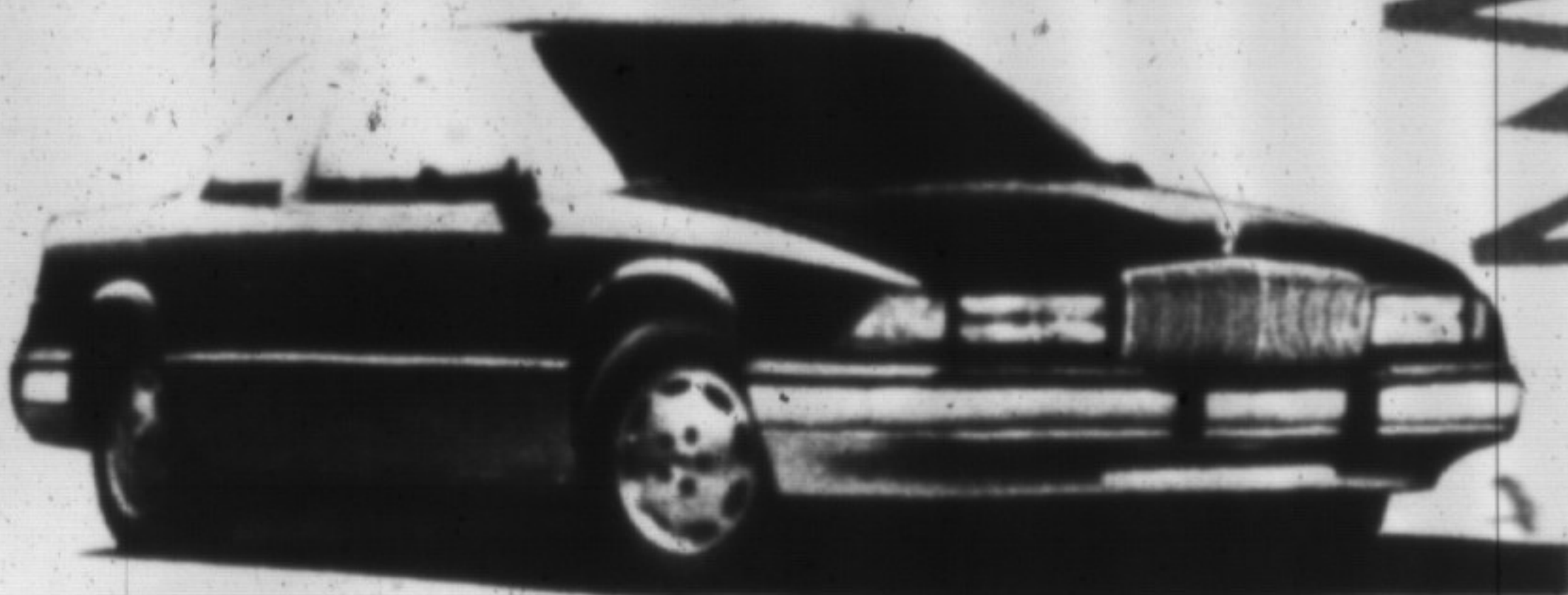


Grand Prix

New for 1990!
4 Door Grand Prix and Regal



Sunbird



Regal



Tempest



Grand Am

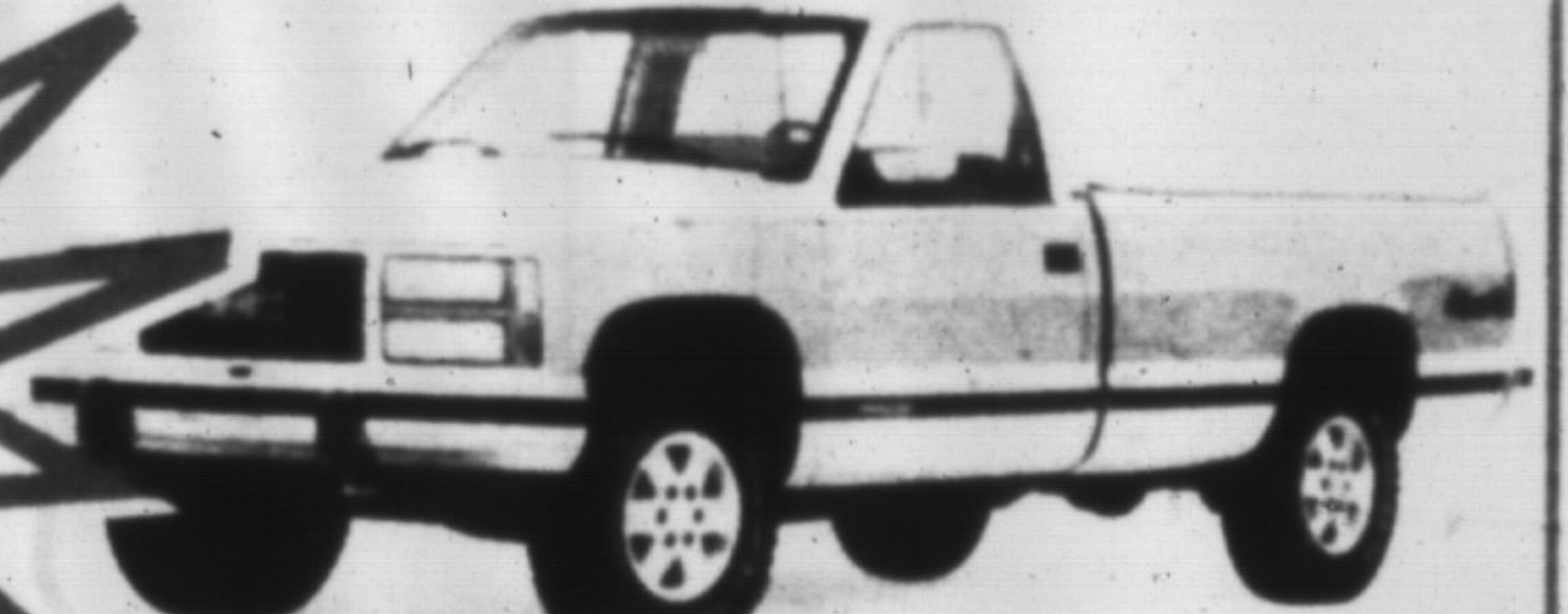


Le Sabre



S-15 Jimmy

A picture says a thousand words. A test drive will say much more!



Sierra GMC Truck

**ALL 1989 MODELS
PRICED TO SELL**

ALL ARE INVITED!

*Coffee &
Donuts*

Murray Wilson

Hours:
Thurs: 9 a.m. - 9 p.m.
Fri: 9 a.m. - 6 p.m.
Sat: 9 a.m. - 5 p.m.

409 MAIN STREET EAST

878-2355