

BEST HOMES

The Canadian Champion

Milton, Ontario

September 20, 1989



A PLEASURE TO VIEW

JUST LISTED. This nicely landscaped brick and aluminum split level has much to offer. Ceramic floor in entrance & washroom, finished rec. room with brick walls & bar, fireplace, air conditioning, air cleaner, tool shed, garage and more. Asking \$224,900. To see for yourself call Ross Cescon and arrange an appointment to view #59.

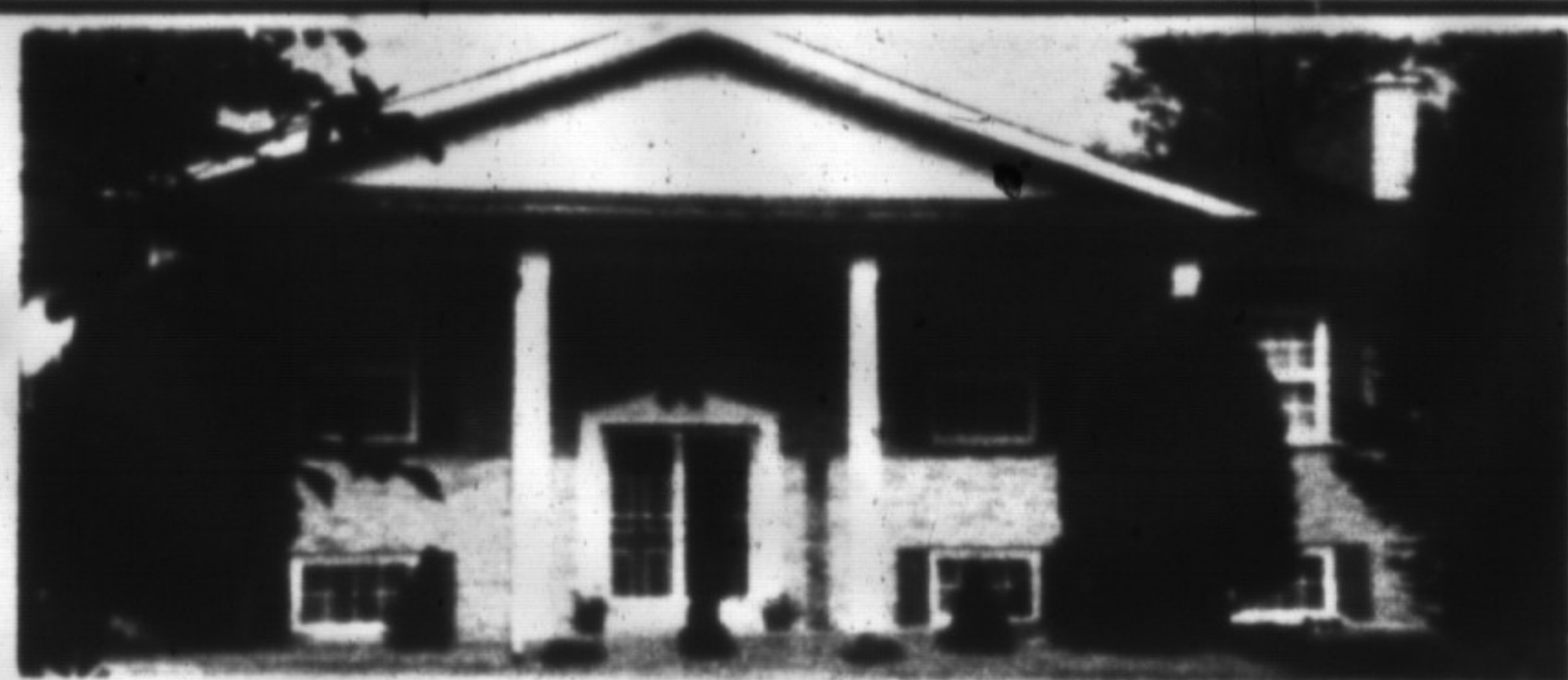
REALTY WORLD—McCrudden Real Estate Inc.
876-1133



EXECUTIVE ESCARPMENT ESCAPE

Approximately 4700 sq. ft. of gracious country living (4 acres). Custom home featuring sunken living room and dining room, European kitchen, Florida/spa room, recreation rooms, study or 5th bedroom, viewing windows, balconies, gardens throughout. Easy access to Toronto, Hamilton, Guelph. Offered at \$599,900. For your personal viewing please call

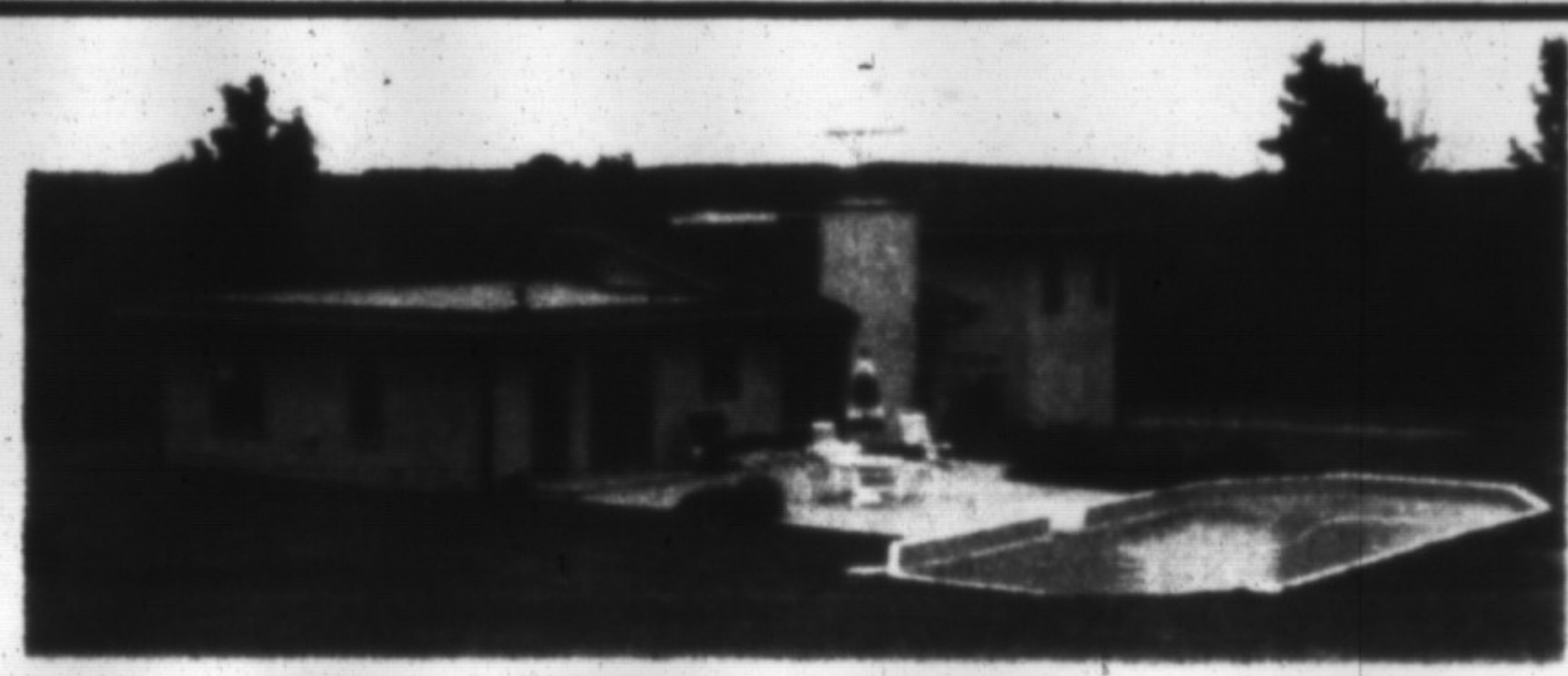
CENTURY 21 GOLDEN REAL ESTATE LIMITED
NOVA SPARKS AUSTIN 878-8495



FORMAL AND ELEGANT

Down the paved drive, behind the trees sits this 4 acre manicured estate. A 3500 sq. ft. home including a 3 bdrm. in-law or maid's suite. Pond plus many other exciting features. Asking \$549,900.

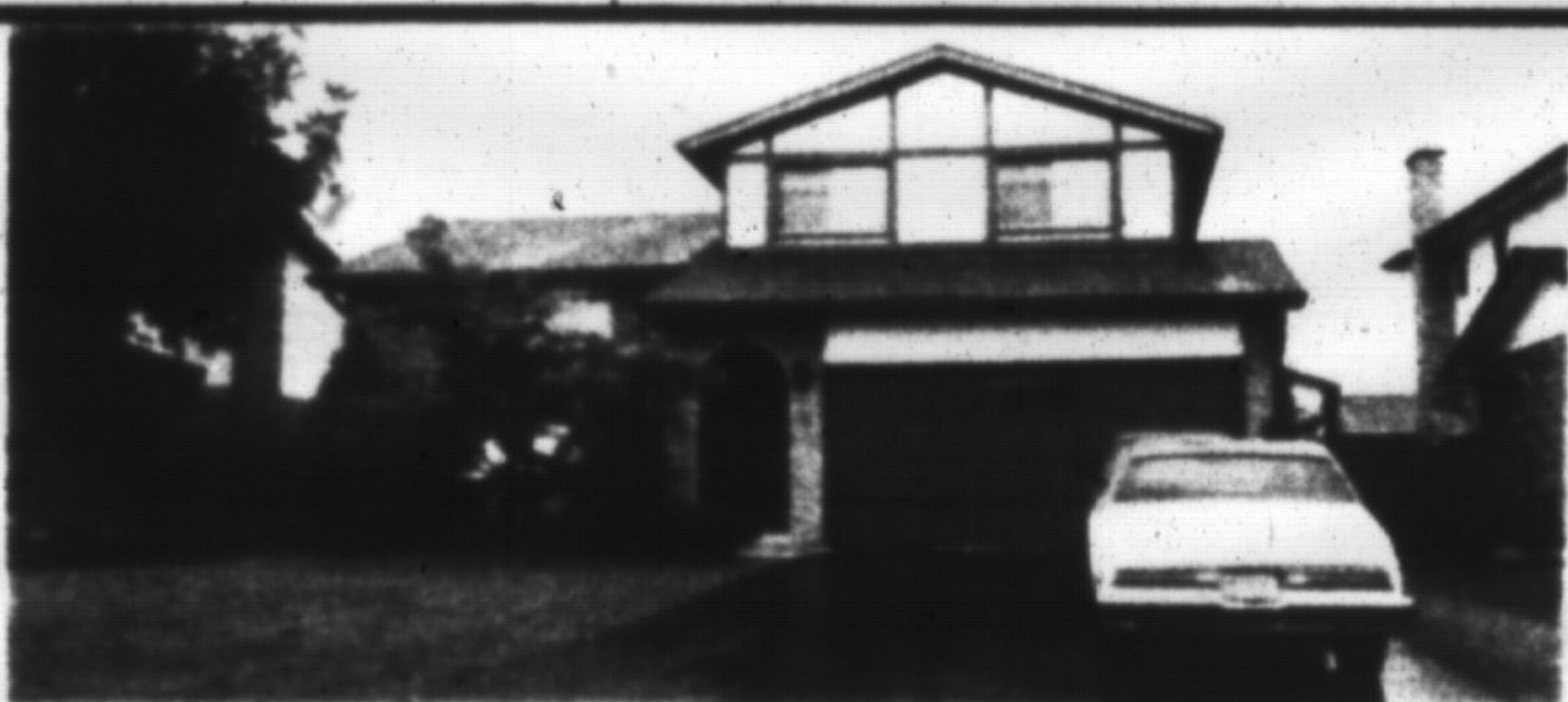
COUNTRYWIDE REALTY INC.
SYLVIA BURSEY 854-2777



UNPARALLELED VIEWS

This contemporary executive home is situated high on a hill on 2 acres of park like surroundings. Cathedral ceilings, beautiful custom built pine kitchen, interlocking patio/walkways, 52 x 20 ft. inground pool and much more. The ideal choice for the discriminating buyer. \$519,900.

ROYAL LEPAGE REAL ESTATE SERVICES
MARG SWAIN 878-8101



BEAUTIFUL RUSTIC 26 ACRES

Just N. of 401 on No. 25 and 15 Sideroad W., Milton. \$449,900. Sitting high on escarpment with Bruce Trail running nearby. Fresh springfed pond on property, spacious and bright 3 bdrm. bungalow, 30 x 30 shop/garage and small barn.

ROYAL CITY REALTY LIMITED
BARBARA GLENN 876-1156



PRESTIGIOUS NEIGHBORHOOD

Spacious 3 bedroom home, main floor family room with fireplace, eat-in kitchen, separate living/dining room and a finished basement. Only \$254,900. Call today!

ROYAL CITY REALTY LIMITED
JOHN (JP) PEARS 876-1156



ELMWOOD CRESCENT

Established area embraces this solid brick home with mature treed lot close to all amenities and offers 3 bedrooms, combination living room and dining room, finished basement and oversized garage. This home is a must to see with lots of charm with its hardwood floors and wainscoting. For your appointment call today.

RE/MAX MILTOWNE REALTY CORP.
BETTY INGLE 878-2365



PRIME LOCATION & BUILDINGS PLUS 64.17 ACRES

Century farm owned and operated by family for 165 years, located at 8th Sideroad and Twiss Road in an area of beautiful new executive homes. Original 1832 stone house plus new 3 bedroom raised bungalow plus 5 barns/drivesheds, streams, etc. Magnificent property for the right purchaser or investor.

RE/MAX MILTOWNE REALTY CORP.
CAROLE STONEHILL 878-2365