

ROYAL CITY REALTY

LIMITED

The Canadian Champion, Wednesday, September 13, 1989—RE19



EV REICHENBACH
873-2349



BARBARA GLENN
(519) 853-0923



LAWRIE GIVEN
876-1961



EVA GOODING
1-659-1582



SHARON KERLEY
854-0474



SHERYL J. GRAY
875-1121



RON FURIK
878-3337



TERESA MILLS
878-5998



NEW LISTING - TIMBERLEA

Call Katrina Walton today to be first to view this appealing 3 bedroom home. This attractive residence offers many fine features and is priced just right for the money-conscious buyer at \$189,900. 8576-1156 M-9240



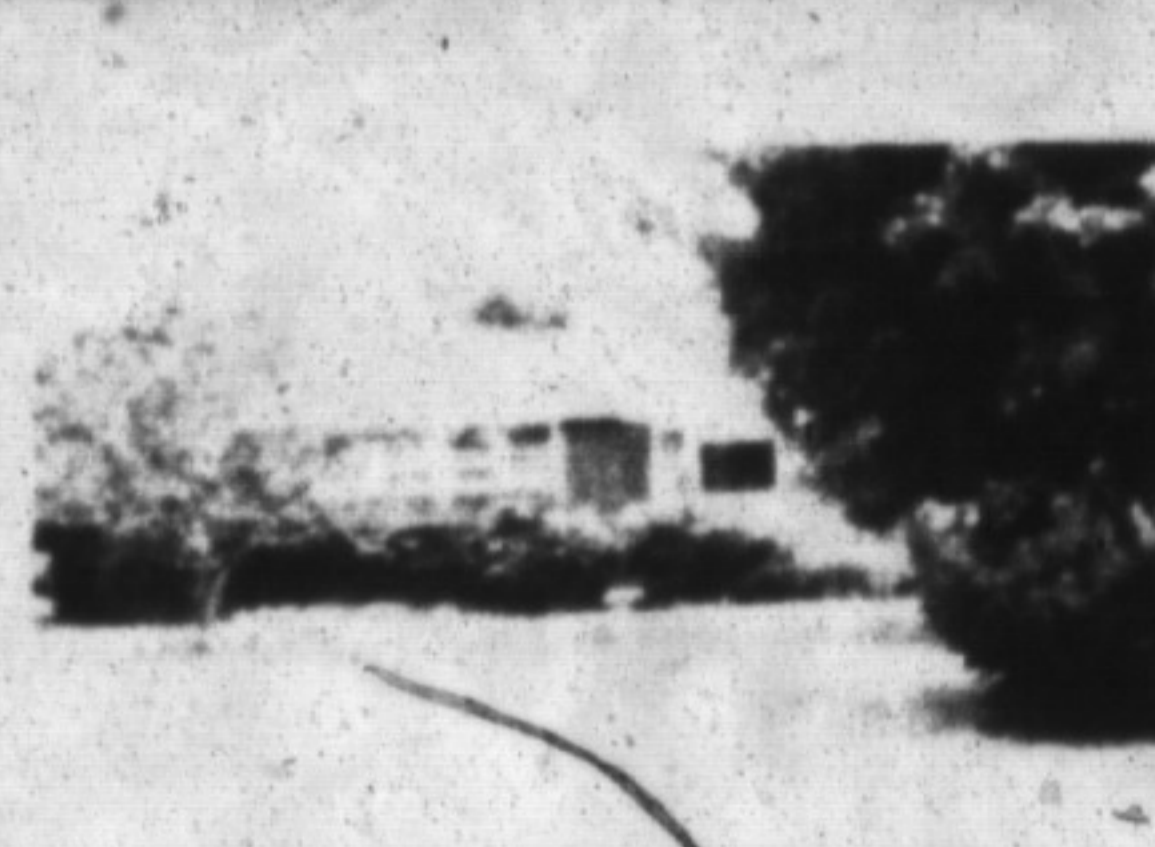
WHEN THE ORDINARY WON'T DO

Check out this updated country bungalow with historic appeal. Situated on just over an acre of land in Campbellville. Interior has been renovated with new flooring, pine trim, lavish bath. Exterior has alum siding & new windows. Asking \$239,900. Call Gladys Cranford for private showing. M-9232



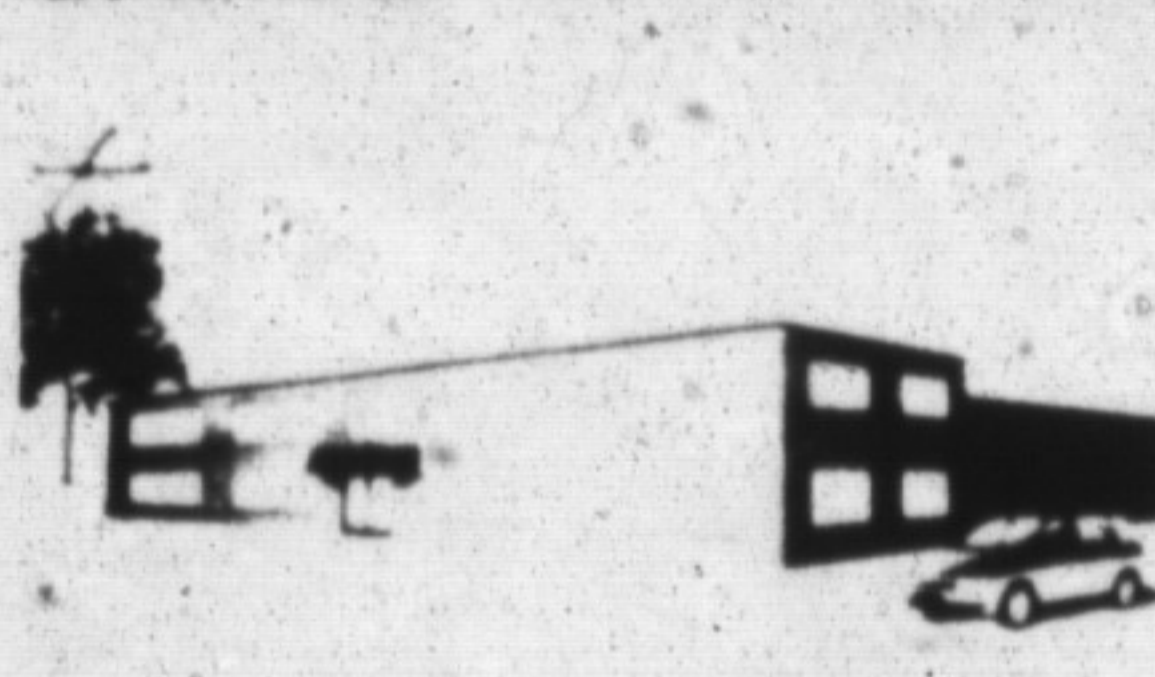
FRESHLY DECORATED TOWNHOUSE

Listed "FOR SALE" at \$149,900. This town home comes complete with new carpet in the recreation room, freshly painted throughout, new flooring in the kitchen and main entrance. Call Wayne Casson to view this immaculate home. M-9239



COUNTRY PLEASURE BUT

Close to town. Call me about this new listed all brick bungalow 2-4 baths, 2 kitchens, finished basement, 4th bedroom in basement, central air. All on almost 3/4 of an acre. Call Sheryl Gray for further info. M-9221



GENERAL INDUSTRIAL USE

On Nipissing Rd. in Milton. Half acre, fully serviced lot. Vendor will build to suit for either sale or lease, up to 10,000 sq. ft. Renderings and site plan available. Call Lawrie Given. M-9165



ROCKWOOD BOUND?

Take time to inspect this new home being built on a premium lot. This attractive home comes complete with three washrooms, two fireplaces, sunken living room and more. Asking \$309,900 for this Drayton model. Call Wayne Casson to view. M-9232



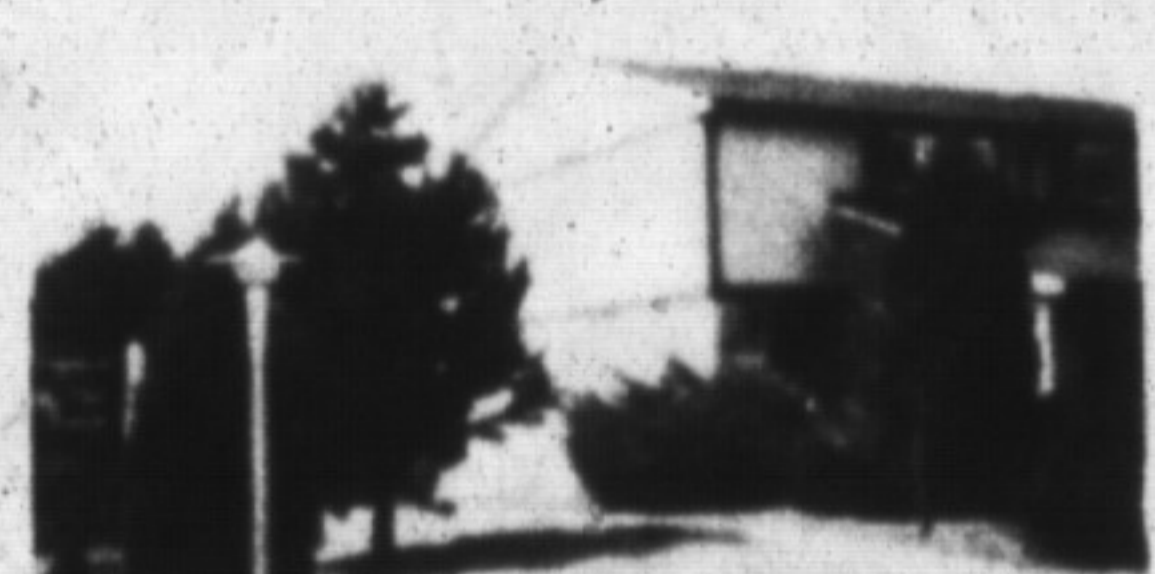
LANDREX BUILT NEW HOME

The attractive bungalow comes complete with a premium lot in a new subdivision in Rockwood. Priced to sell at \$259,900. Call Wayne Casson to view this Belmont model. M-9233



DON'T WAIT!

This industrial condo is waiting for the right investor. Approx. 1600 sq. ft. in a prestigious complex. Contact Bert Davis 876-1156 for more information. (Listed \$135,000) M-9219



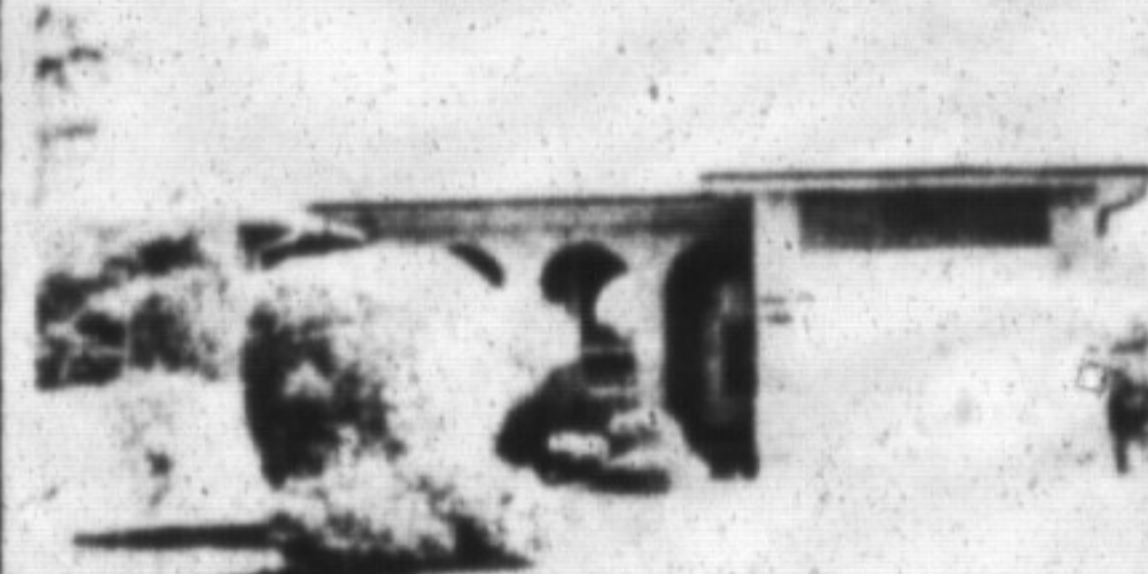
BEAT THE RENT RACE!

* 3 bdrm "end unit"
* eat-in kitchen with appliances
* lg master w/wall to wall closets
* single garage and driveway
* walkout to private yard
* walk to schools and shopping
* listed at \$152,900
Call Bert Davis 876-1156 M-9111



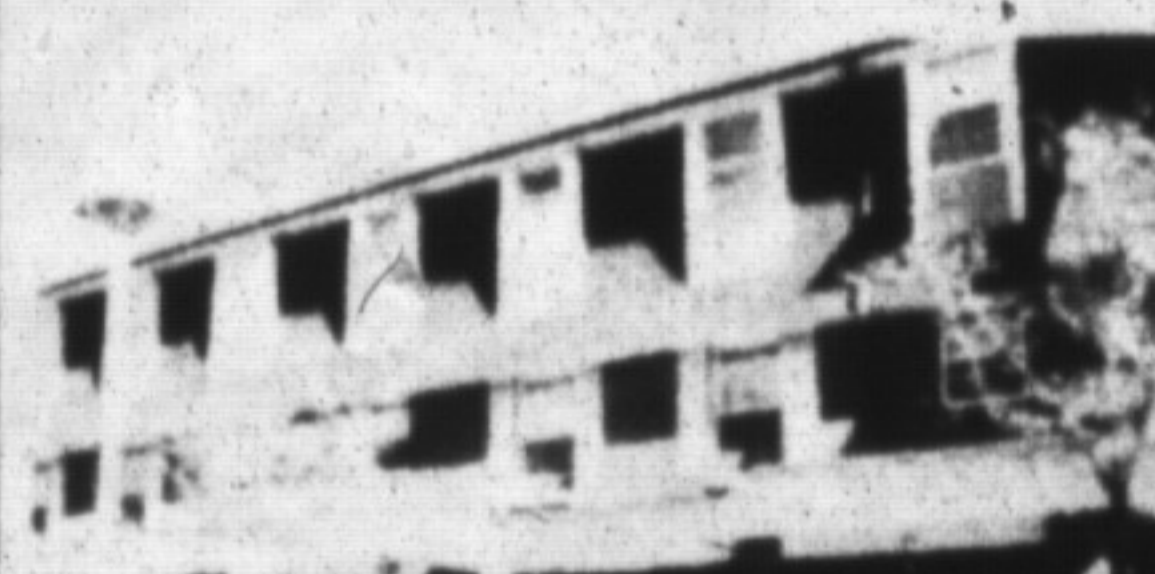
DON'T MISS THIS ONE

Located just north of Milton, the two year old bungalow offers three bedrooms, two washrooms, large kitchen with walkout to deck, separate living room, full basement (insulated), gas heating, lot 125 ft x 200 ft and super view. Listed at \$254,900. Contact Bill Curme. M-9186



BACKSPLIT SPLENDOR

There's plenty of room to work in the kitchen or play in the yard, walking distance to schools and shopping this home features a semi ensuite, games room, a kitchen that overlooks the family room and much more. Call Bert Davis 876-1156. M-9226



WHAT MORE COULD YOU WANT

This 3 bdrm townhouse is a great buy. Features washer, dryer, freezer, frg, stove, and even a dishwasher. Upgraded carpet. Move in and relax. Yours for only \$154,900. Call Muriel Tucker 876-1156. M-9149



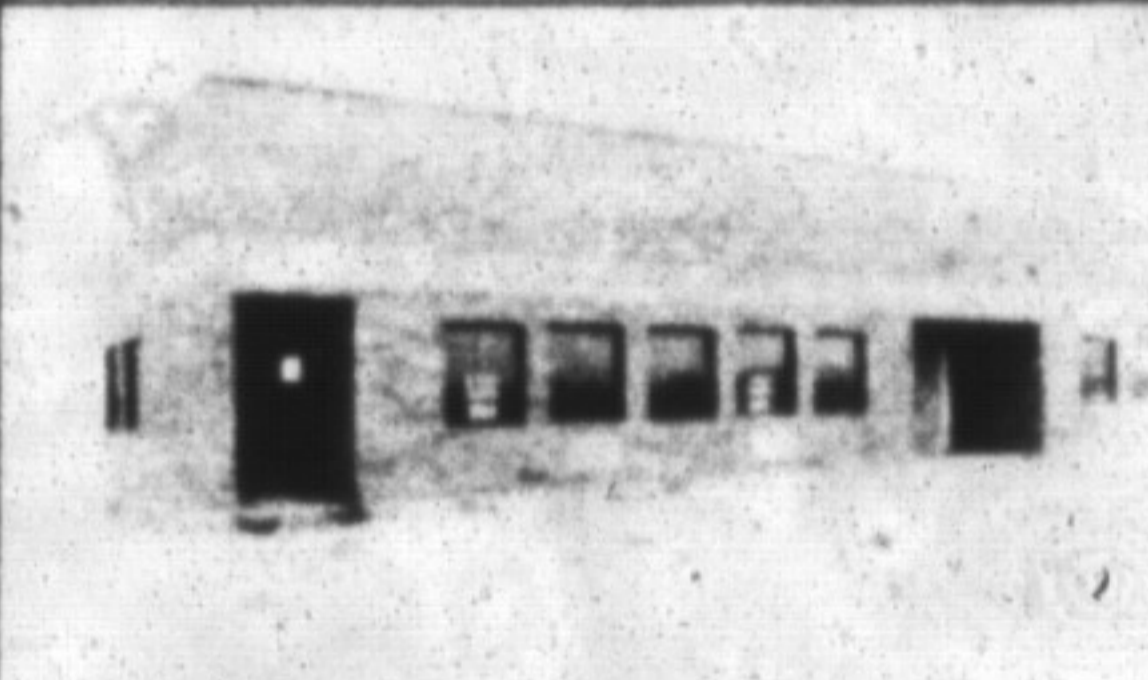
3 BEDROOM HOME \$189,900

Waiting for you a lovely home. Featuring fireplace, fenced yard, garage, move in and enjoy the dutch clean home. Call Muriel Tucker 876-1156 for appointment. M-9210



WANT A QUICK CLOSING

Buy this 4 bdrm 2 bath home and pick your moving day. Features fenced yard, double garage and good sized driveway, central air, fireplace. Open and spacious living \$228,500. Call Muriel Tucker 876-1156. M-9135



NEED INDUSTRIAL SPACE!!

* End two units
* High ceilings
* Ground level entry
* Lrg roll-up doors
* Great road exposure
* Easy highway access
* Call Bert Davis to view. M-9223



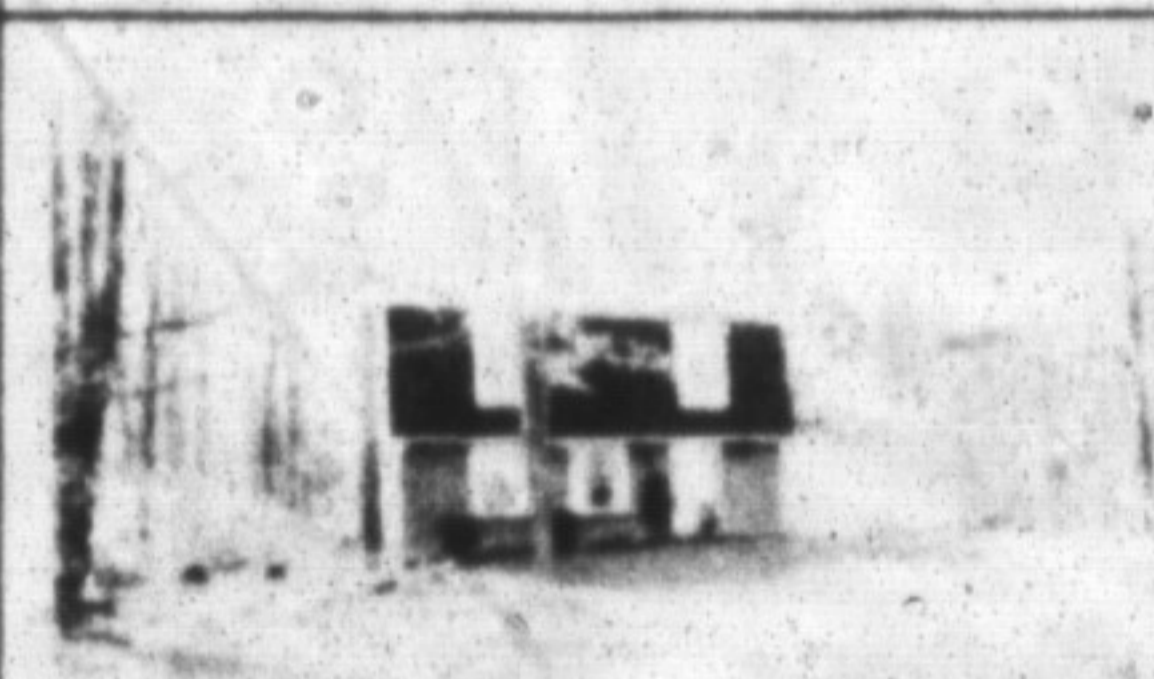
4 BEDROOM FAMILY HOME

This lovely home is situated on a fully fenced oversized lot and features separate dining room, upgraded broadroom, central air, main floor family room with fireplace and walkout to 700 square foot wraparound deck. Attractively priced at \$299,900. For more information call Sharon Kerley. M-9218



LOOKING FOR QUALITY?

Don't miss this nearly new home. Features include oversized kitchen with ample oak cabinets, large living room with fireplace, bay window and oak railings. Colonial style doors throughout. Main bath features oak cabinetry and skylight. Situated on a 66' x 132' lot and attractively priced at \$189,900. Call Sharon Kerley. M-9220



1.3 ACRE TREED LOT CAMPBELLVILLE

Two storey 3 bedrooms finished rec room with fireplace. For more information on the home please ask for Stewart Haddon. M-9141



OPEN HOUSE
Sept 16-14 Sept 17-14
4th-Line South of Brimley Rd.
to 2nd Lower Base Line

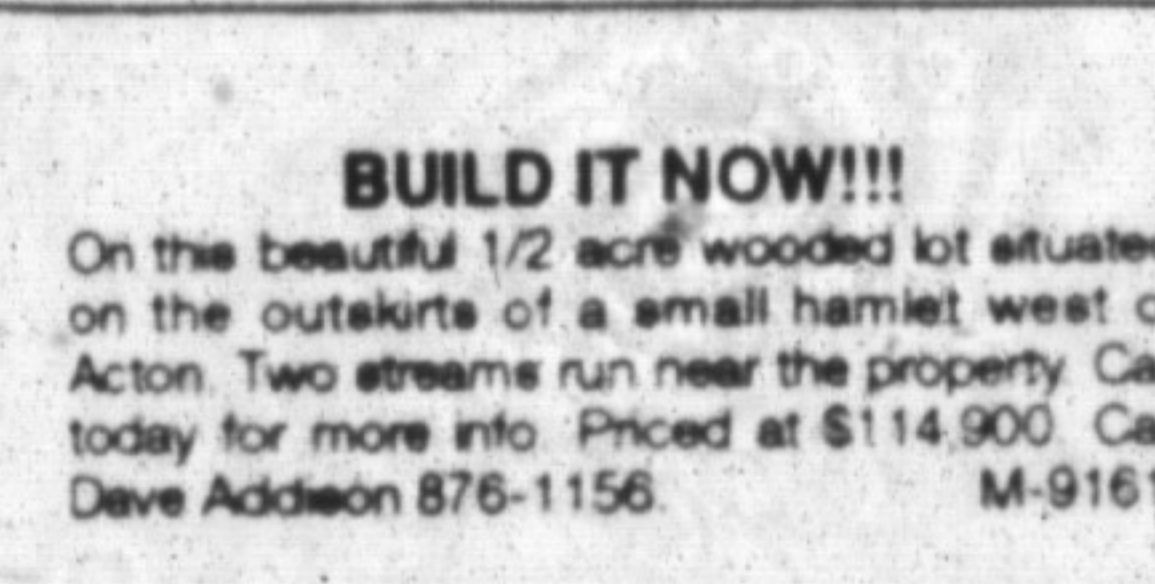
RAMBLIN RANCH

Located south east of town, the brick home offers approximately 2600 sq. ft. of living space plus full basement, included are four bedrooms, three washrooms, main floor family room with fireplace, separate dining room, formal living room, large kitchen with oak cabinets, main floor laundry, central air and vac, inground pool and three acre lot. Asking \$449,000. Ask for Bill Curme. M-9191



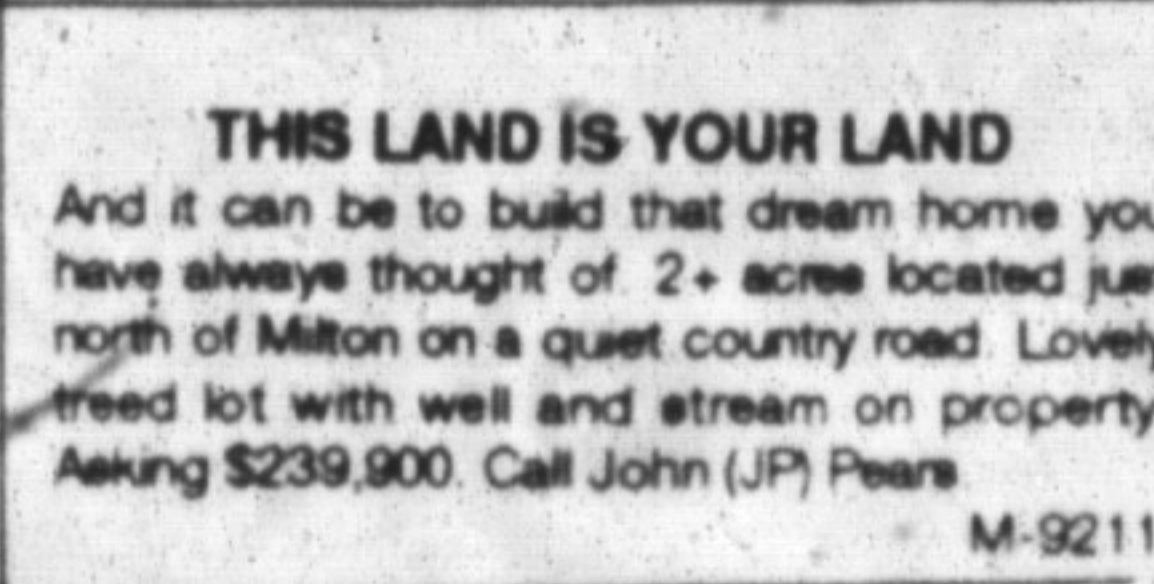
FEW CAN COMPARE...

With this huge backsplit in one of Milton's more popular locations. Hardwd flr, fam rm, w/ firepl & w/o, 3 bathrooms, large eat-in kit, whirlpool/spa, BBQ deck, dbl garage. All on 60 x 150 lot. Only \$289,000. Call Lawrie Given. M-9199



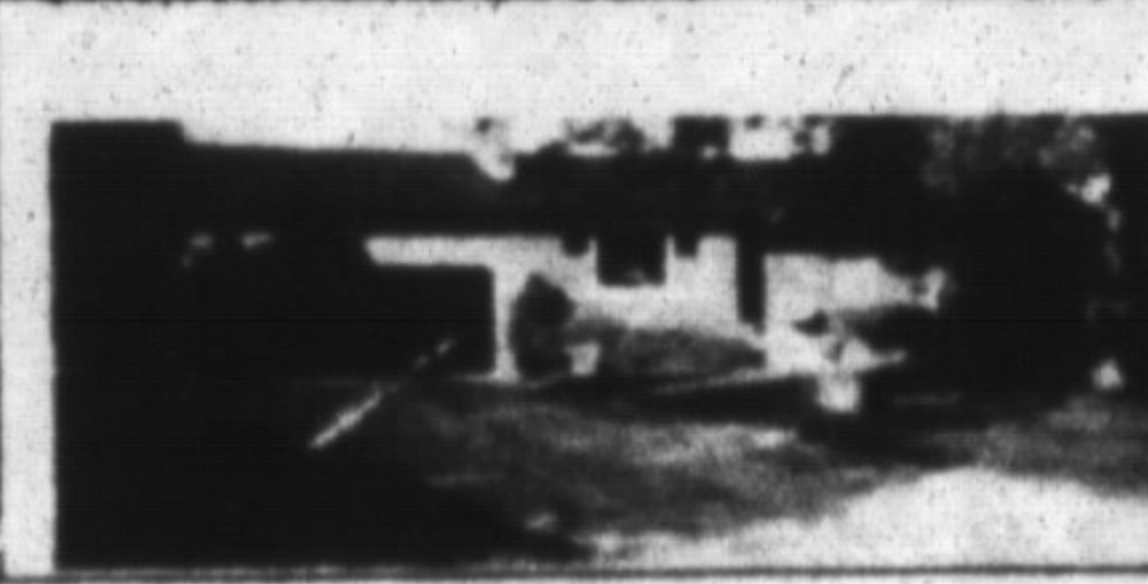
BUILD IT NOW!!!

On this beautiful 1/2 acre wooded lot situated on the outskirts of a small hamlet west of Acton. Two streams run near the property. Call today for more info. Priced at \$114,900. Call Dave Addison 876-1156. M-9161



THIS LAND IS YOUR LAND

And it can be to build that dream home you have always thought of. 2+ acres located just north of Milton on a quiet country road. Lovely treed lot with well and stream on property. Asking \$239,900. Call John (JP) Pears. M-9211



SUPER COUNTRY BUNGALOW

Located on town limits village of Erin. Brick/stone with finished aluminum eaves, soffits & fascia. Oversized double garage. Setting in nice area with lot of 100' x 154'. Listed at \$189,900. Please call Barbara Glenn for details. M-9231



GLADYS CRANFORD
878-4519



DAPHNE COULTER
875-1636



BERT DAVIS
878-2908



JOHN (J.P.) PEARS
878-6859



BILL CURRIE
878-4944



CAROL D. BUDWORTH
878-8545

DEMAND THE BEST

64 ONTARIO ST. N., MILTON

876-1156
TOR. LINE 826-6390
24 HR. ANSWERING SERVICE