

RE/MAX

Miltowne Realty Corp.

22 Ontario St. South

878-2365



Paul Page

Associate Broker
Residential &
Investment Properties
878-2365

SMART BUYER'S TAKE A LOOK

4 Level Side Split in lovely neighborhood. This home offers: New in 89 is carpets in F.R., L.R., Dr., stairs and hallway. New roof in 89. High efficiency furnace. Fire place in family room. Large privately fenced yard. Double garage and much more. Must be seen. Call Paul Page.



**PHIL
PRESTIDGE**
878-2365
878-6924



OPEN HOUSE
Sunday, Sept. 17
2-4

741 Woodward #6

WOODWARD AVE. TOWNHOUSE

- Quality finish top to bottom
 - Three bedroom townhouse "By the Oaks"
 - Close to schools and parks, pool, rec centre
 - Quiet neighbourhood
 - Seldom do you get such an opportunity
- Call Phil Today.
Asking Price \$154,900

INDUSTRIAL ACREAGE

- 19.75 acres with 401 & Steeles Ave. frontage
- designated industrial
- just east of James Snow
- call Phil for details



DOUG J. BUTSON
878-2365

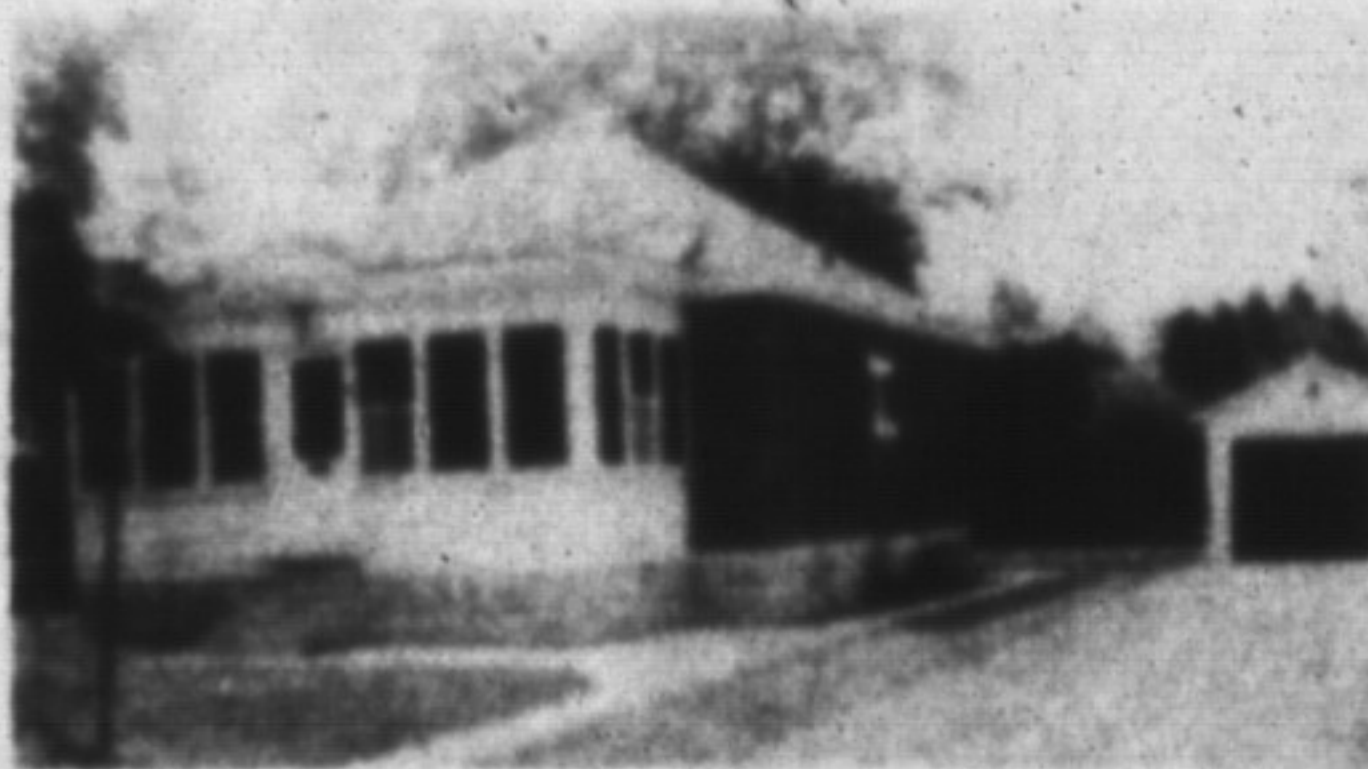
RESIDENTIAL TOWN/COUNTRY
COMMERCIAL OR INVESTMENT

OPEN HOUSE Sun. 1:30
Sept. 17 to 4:00



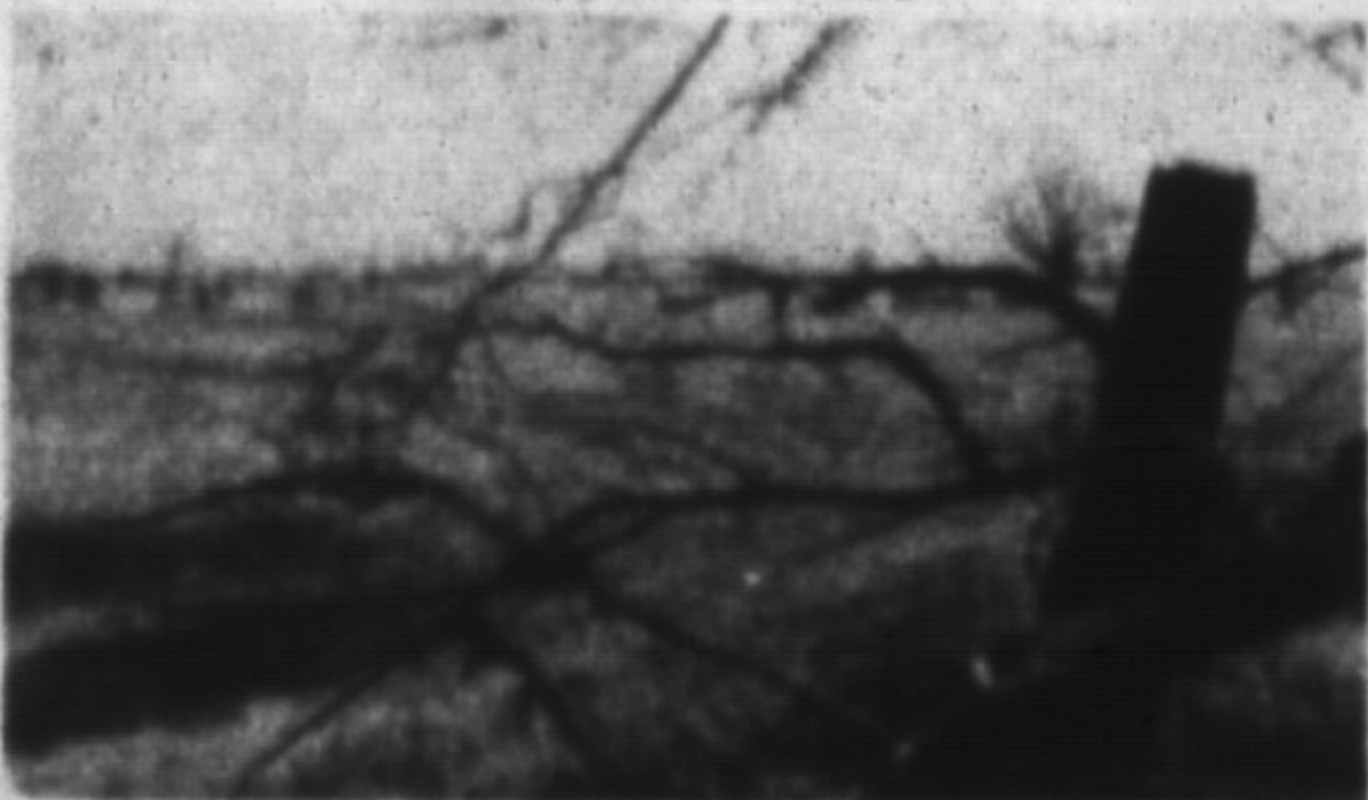
Third Sideroad just E. of
Guelph Line. Almost 2
acres, New England style.
Reduced \$359,900.

CENTRAL AIR/SUNPORCH



Immaculate bungalow
T & G Pine glassed in Sunporch
Inside garage door control
Walk out mail & library
Suit professional or
Retired couple \$181,900

RARE 2 ACRES



Century Farm severance
No sign so call me!



**Rejane
Petroff**
875-1515
878-2365



MONEY TREE GROWS HERE

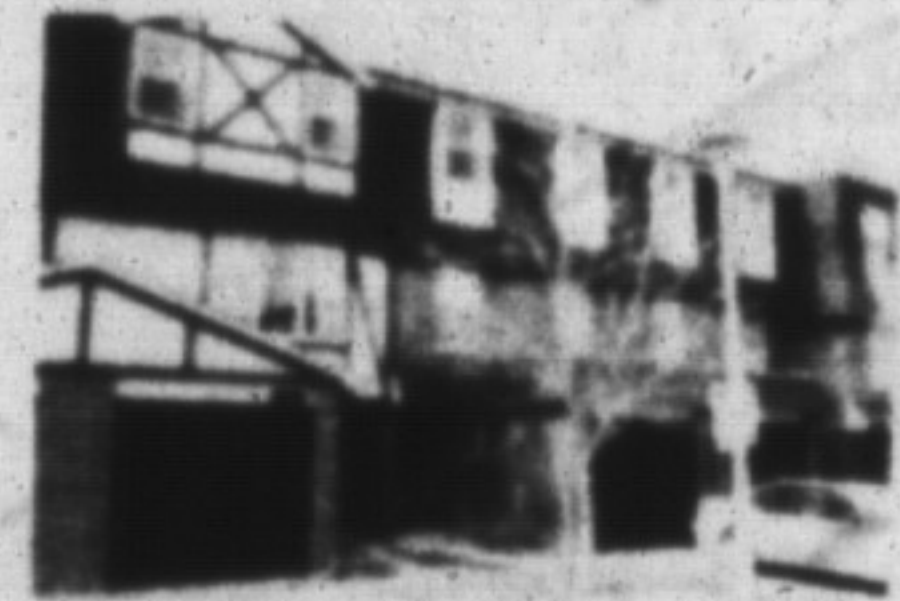
This duplex offers you an opportunity to invest your money while living on the premises. 3 bedrooms, kitchen, living room, downstairs. 2 bedrooms, kitchen living room upstairs. Each has 4 piece bath & separate entrance. For more information call Rejane Petroff at 875-1515 for showing. REDUCED TO \$225,000.



Be "SOLD"
with Rejane Petroff!



Gary Thomas
Broker/Owner
878-2365
Res: 335-8888
Tor: 826-1030



GET STARTED OUT RIGHT!

Three bedroom townhome in central location offers two baths, finished rec rm and single car garage as well as the peace of mind of complete maintenance and the joy of owning your first home at \$152,900. Call Gary Thomas for more details.



IF YOU'RE LOOKING TO RELOCATE? MOVING UP?

Come on down and see this excellent multi-level side-split in Dorset Park that's all decked out! Close to schools and shopping and in impeccable condition this home features 3+ bedrooms, 4-piece bath, cathedral ceiling, a balcony from living room and dining room and a 16'x12' cedar deck out back. What a find at \$189,900! For more information, contact Gary Thomas.



HALLMARK OF FIRE LIVING

Reward yourself for your hard work with this beautiful 3700 sq. ft. custom built two-storey home set on 1.36 acres featuring 4 bedrooms, 2 1/2 baths, main floor family room and den with oak trim, balcony off master bedroom - ensuite with whirlpool, sliding glass doors to deck, sun room, double garage and interlocking driveway. Many features are included such as security system and central vacuum system. For those who know what they want - call Gary for more information. Asking \$539,000.

FOR LEASE

- Brand New Commercial Building
- Central Location, Bronte Street
- 1,000 sq. ft.
- 6 units available
- \$11.00/sq. ft.

Call Gary Thomas for more details