

FURLONG COLLINS MANDERSON & GUNDING

Offices in Milton,
Brampton,
Halton Hills

878-8123

Your full
service
Law Firm

To Keep You Informed:
MORTGAGE RATES THIS WEEK

BANKS	VARIABLE RATE	6 MONTHS	1 YEAR	2 YEARS	3 YEARS	4 YEARS	5 YEARS
Cdn. Imperial	13 ¹ / ₂ %	13 ¹ / ₂ %	13 ¹ / ₂ % 12%	12%	11%	11%	11%
Bank of Montreal	13 ¹ / ₂ %	13%	13 ¹ / ₂ % 12%	12%	11%	11%	11 ⁷ / ₁₀ %
Laurentian Bank	n/a	13 ¹ / ₂ % 13	13 ¹ / ₂ % 12%	12%	11%	11%	11%
National Bank	n/a	13 ¹ / ₂ % 13	13 ¹ / ₂ % 12%	12%	11%	11%	11%
Bank of N. S.	13 ¹ / ₂ %	13%	13 ¹ / ₂ % 12%	12%	11%	11%	11%
Royal Bank	13 ¹ / ₂ %	13 ¹ / ₂ % 13	13 ¹ / ₂ % 12%	12%	11%	11%	11%
Toronto Dominion	13%	13	13 ¹ / ₂ % 12%	12%	11%	11%	11%

TRUST COMPANIES

Cabot Tr.	n/a	13%	13 ¹ / ₂ % 13	12%	12%	12	12
Canada Trust	13 ¹ / ₂ %	13%	12%	12%	11%	11%	11%
Central Guaranty Trust	13%	13 ¹ / ₂ % 13	13%	12%	12	11%	11%
Co-operative Trust	n/a	13%	13%	12 ¹ / ₂ % 12%	12 ¹ / ₂ %	11%	11%
First City Trust	n/a	13%	12%	12%	11%	11%	11%
General Trust	n/a	13 ¹ / ₂ % 13	13%	12%	11%	11%	11%
Guardian Trust	14 ¹ / ₂ %	12 ¹ / ₂ %	12%	12%	11%	11%	11%
Household Trust	n/a	12%	12%	12%	12%	12%	12%
Montreal Trust	n/a	12 ¹ / ₂ %	13%	12%	11%	11%	11%
National Trust	13%	13	13 ¹ / ₂ % 12%	12%	11%	11%	11%
Premier Trust	n/a	13 ¹ / ₂ % 12%	13 ¹ / ₂ %	12%	11%	11%	11%
Royal Trust	n/a	13%	13%	12%	11%	11%	11%
Standard Trust	n/a	12%	12%	12%	12	12	11%
Vanguard Trust	n/a	13%	12 ¹ / ₂ % 13	12	11%	11%	11%
Duca Credit Union	n/a	12%	13 ¹ / ₂ % 12%	12%	11%	11%	11%
Jet Power Credit Union	13 ¹ / ₂ %	13%	12 ¹ / ₂ %	12%	12%	12	12

NOTES: ** N.B. - 1ST RATE CHARGED SUBJECT TO ADJUSTMENT DURING TERM OF MORTGAGE.

PLEASE CONSULT INSTITUTION FOR TERM OF YEARS AVAILABLE.

R.O.R. RATES ON REQUEST. * RENEWALS ONLY.

OP. OPEN. N/A. NOT APPLICABLE.

NOT QUOTING.

RATES TAKEN

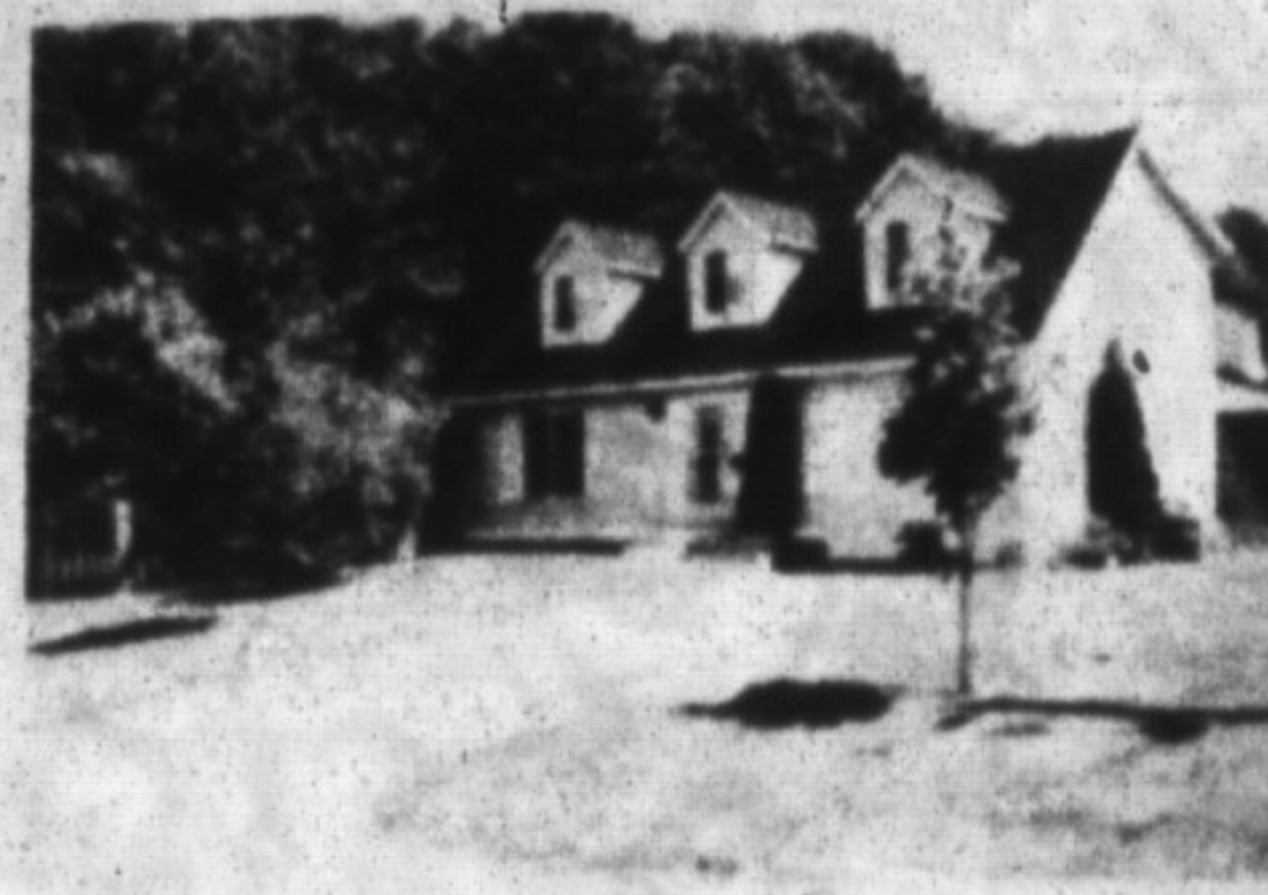
SEPTEMBER 1, 1989

FISCAL AGENTS SPECIALIZES IN TRUST AND LOAN INVESTMENTS, AND ALSO SUPPLIES FREE CONSUMER INFORMATION ON THESE INVESTMENTS. PHONE: 644-7700.

RE/MAX GOLDEN TRIANGLE realty inc.
725 Coronation Blvd. Cambridge
(519) 740-3690



CAMBRIDGE



\$194,500 892091
4 Bedrooms, Hwy 401,
Woodland Park



\$159,900 891990
3 Bedrooms, Hwy 401, 2
Fireplaces



\$129,900 891938
3 Bedrooms Semi, C/ Air,
Hwy 401



\$117,900 891393
2 Bedrooms, Single
Family, Large Lot

CALL: ALEX or TRUDY GRIER (519) 654-9553
SALES REPRESENTATIVES



ANNOUNCING....

Towne Square is pleased to announce Milton's newest shopping and office centre development in the heart of downtown Milton. Located at 217 Main Street East (at Montgomery Lane) this addition to the successful block bounded by Main, Martin, and Mill Streets offers prestigious new retail and office space, while preserving the original character of the downtown core. Plenty of Parking and elevator service to the second floor. Available for occupancy in the Spring of 1990.

Please call James D. Snow today for further details.



JAMES D. SNOW



420 MAIN ST., MILTON

OFF.: 878-8495

RES.: 878-2172

Tor. Line 821-4764

**GOLDEN REAL
ESTATE LIMITED**

**Jim & Lorraine Kerr
Brokers/Owners**