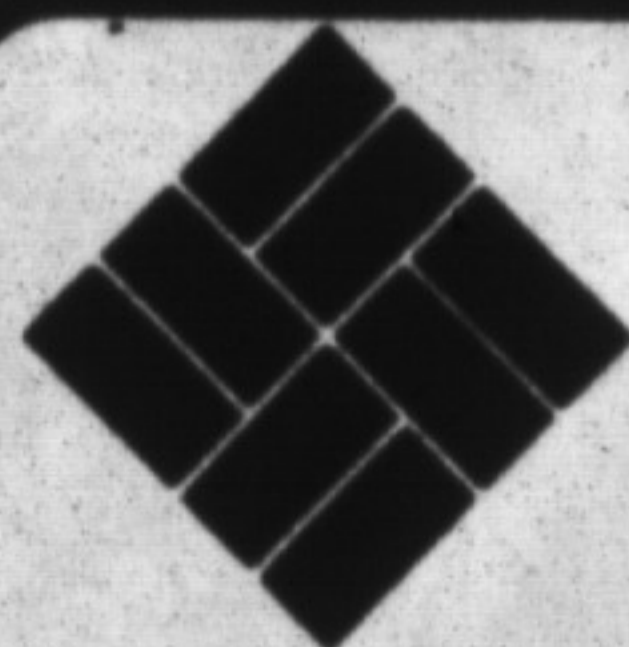


145 General Help Wanted



**PERMA PAVING
STONE CO.**

Interlocking Stone Manufacturer
New Plant in Acton
Requires

**PRODUCTION
PERSONNEL**

- Inside Forklift Driver
- Outside Forklift Driver
- Mixer Operator
- Bundling Machine Operator

Interlocking Stone background an asset. Excellent wages and benefits.

To arrange an interview, please call

Perma Paving Stone Co.
20 Commerce Crescent
Acton
853-4133

145 General Help Wanted

Something New is Coming to Oakville!!!

**SAV-A-CENTRE
FOOD MARKET**

A DIVISION OF THE GREAT ATLANTIC AND PACIFIC COMPANY OF CANADA

**Requires
Part Time Employees
FOR ALL DEPARTMENTS**

If you are enthusiastic, friendly, people oriented now is the time to join our exciting food industry. In return for your enthusiasm and abilities, we offer:

- Complete training
- Competitive wage rates with scheduled increases
- Employee incentive fund
- Part time dental plan
- Potential career opportunities

Applications accepted from 14 years & up

Apply now to
CAN. EMPLOYMENT CENTRE
635 FOURTH LINE, OAKVILLE
or
TRAFALGAR VILLAGE STORE
125 CROSS AVE., OAKVILLE
(1-5 p.m.)

145 General Help Wanted

IF THIS INTERESTS YOU:

- \$10.00 An Hour to Start (depending on shift & departments)
- Hiring Bonus
- Flexible Hours
- Staff Discounts
- Paid Breaks
- Friendly People
- Bonus Plan (depending on type of job)
- Good benefit package

If you are looking for a few hours a day or week, or full time employment and the above interests you, come and talk to us.

FIFTH WHEEL TRUCK STOP
40 Chisholm Drive, Milton
878-8441

We are more than just a Truck Stop. We are a family restaurant, retail store, motel, and gas & diesel station.

**JANITOR/MAINTENANCE
Full Staff Required**

For our new location in the Milton area to start early October.

Please contact: **RUSS MEILING**
AT
TORONTO AUTO AUCTIONS
1-275-3000

KELSEY'S RESTAURANT

Now Hiring
FULL & PARTTIME
FOR ALL POSITIONS
Please apply
Between the hours of 2 p.m. & 5 p.m. to the:
MANAGER,
45 Chisholm Drive,
Milton.

KENTUCKY FRIED CHICKEN

requires
Full Time
Evening Hostess/Host &
Full time
Evening Cook
Part time positions are also available.
Apply in person to:
276 Main St. E.
Milton, Ontario
878-4171

**Landscape
Maintenance Company**

requires
Reliable personnel
to start immediately.
876-4100

SCHOOL BUS DRIVERS

required for daily Burlington routes
Call Ernie or Angie at McCoy.

1-(800)-265-9980

AIMCO

**GENERAL
LABOURERS**

needed immediately for the Burlington/Oakville area. These positions are full-time. Heavy lifting involved. Own transportation a must.

Call now for an immediate interview:

681-3202
AIMCO LABOUR
919 Fraser Drive, Unit 10
Burlington

"MOVE AHEAD WITH THE BEST"

**EMPLOYMENT OPPORTUNITY
TORONTO DOMINION BANK**

310 Main Street
MILTON, Ontario

We are presently looking for an experienced, full-time teller. If interested please contact:

JUDY SAUNDERS
at 878-5561

Zellers
requires
FULLTIME DAY CASHIERS
30 - 35 hours weekly
Apply:
**55 ONTARIO ST. S.
MILTON**

**SECURITY GUARD
REQUIRED**
Local trucking firm requires a responsible person to work on a regular basis each Friday and Saturday Night from 9:00 p.m. to 6:00 a.m.
APPLY IN PERSON
SANDSTONE TRANSPORT LTD.
245 BRONTE ST. N.
MILTON, ONTARIO

STUDENTS
Earn Extra money after school.
Starting Labour day, we are offering an afternoon shift, 4:00 p.m. - 8:00 p.m.
Call:
876-3306

Temporary Full-time or Part-time
PACKAGERS/ASSEMBLERS
Needed immediately. \$5.00 per hour.
Suitable for housewives.
CALL 878-8803

WANTED experienced person to work for wages using my material to shingle easy to do roof. 876-1621 evenings, 878-9375, ext. 54, days.

**THE CORPORATION OF THE TOWN OF
MILTON**

Milton Youth (M.Y.) Place requires a co-ordinator to plan, implement and supervise recreational activities for youths 10-14 years of age. Hours of operation are every second Friday 6:30-9:00 p.m. Applicant must have strong organizational skills, programme planning and supervisory experience. Send resume and cover letter by September 13 to:

**Recreation Co-ordinator of Milton,
Dept. of Leisure Services,
Victoria Park Square
43 Brown Street
P.O. Box 1005
Milton, L9T 4B6**

90% BIG RESULTS with a low cost WANT AD

GENERAL LABOURERS
Required at
**GROWING CAMPBELLVILLE
AUTOMOTIVE PLANT**
Good starting wage and benefits
-Day shift
-Afternoon shift
Call:
(416) 854-2218

GENERAL LABOURERS
required for
Local Manufacturing Plant.
Must be willing to work shift work. 4 days per week (40 hours). Company provides 100% paid benefit package and incentive bonus. No experience needed.
Please apply in person to:
521 McGeachie Dr.,
Milton

HAIR ASSOCIATES
requires
**SHAMPOO PERSON
&
HAIRDRESSING ASSISTANT**
Apply:
878-2501 or 878-2030

Chudleigh's
Has openings for:
**CASHIER Monday to Friday, Market area.
CIDER MAKER**
Please apply in person to
CHUDLEIGHS
Highway 25, 2 miles North of 401
878-2725

HERIGATE INN
requires
**WEEKEND AND FULL-TIME
HOUSEKEEPERS
PART-TIME WAIT STAFF**
FRONT DESK CLERK
Full Time - Alternate Weekends
Mainly 3 p.m. to 11 p.m. shift
Apply in person
161 Chisholm Dr., Milton

General Labour
CGC Interiors, Division of CGC Inc., is a leader in the manufacture of suspended ceilings and access floor systems. We currently have need for general labour. Starting rate \$7.60/hour. If you are interested please apply to:
**Human Resources Manager
CGC INTERIORS**
(Donn Canada Ltd.)
735 Fourth Line
Oakville, Ontario L6L 5B7

SIGN SHOP
requires
**SIGN WRITER
or
LAYOUT ARTIST**
Advancement opportunities. Some graphic art experience an asset, but will train the right person.
Reply to:

TONNER SIGNS
Monday - Friday, 8 a.m. to 4 p.m.
878-9902

Quality Greens
requires
PRODUCT PERSON to work scale.
FULL TIME CASHIER
Apply in person to:
**218 Main Street East
MILTON**

**MOHAWK INN
CAMPBELLVILLE**
**NOW UNDER NEW OWNERSHIP
HELP WANTED**
Front Desk Clerk—will train; Night Auditor; Breakfast/Lunch cooks—experienced; Sous Chef; Daytime Prep people; Breakfast/Lunch Wait Persons—experienced; Evening Fine Dining Wait Persons—experienced only; Part-time bartenders—experienced; Cocktail wait persons; Housekeeping Maids—will train.
Apply in person to:
Hwy. 401 & Guelph Line, Campbellville
416-854-2277