

RE/MAX

Miltowne Realty Corp.

22 Ontario St. South

878-2365



Lorraine Randall

Available for you by pager, car phone, and answering service.
 bus: 878-2365 tor. line: 826-1030
 home: 1-828-BOLD (7653) or 829-1052



735 Robertson Cres



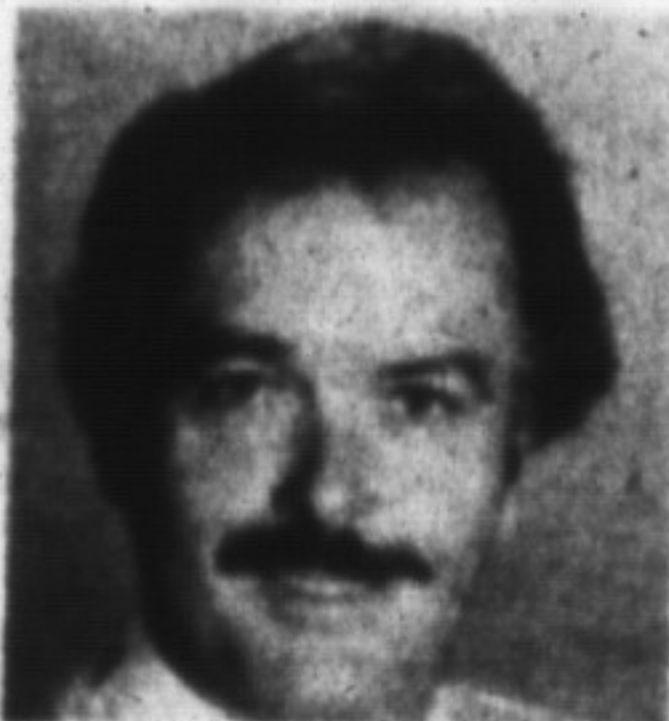
528 McCrae



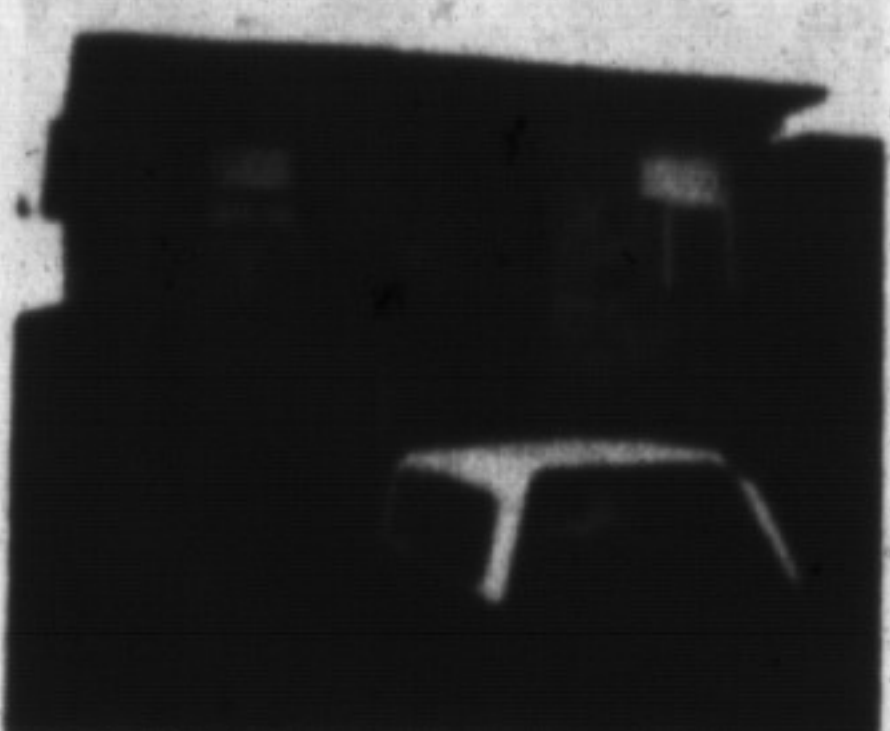
250 Satok #10



\$\$\$ WE GET RESULTS \$\$\$



MAURICE MILJOUR
 OFFICE 878-2365
 RES. 876-4577
 Associate Broker



JUST LISTED!!

Three bedroom family home in Timberlea area is yours for the taking! Featuring main floor family room, four-piece bath, new broadloom and a finished lower level with 2-piece bath all walking distance to schools and only \$225,900. Call Listing Agent Maurice Miljour for all the details.

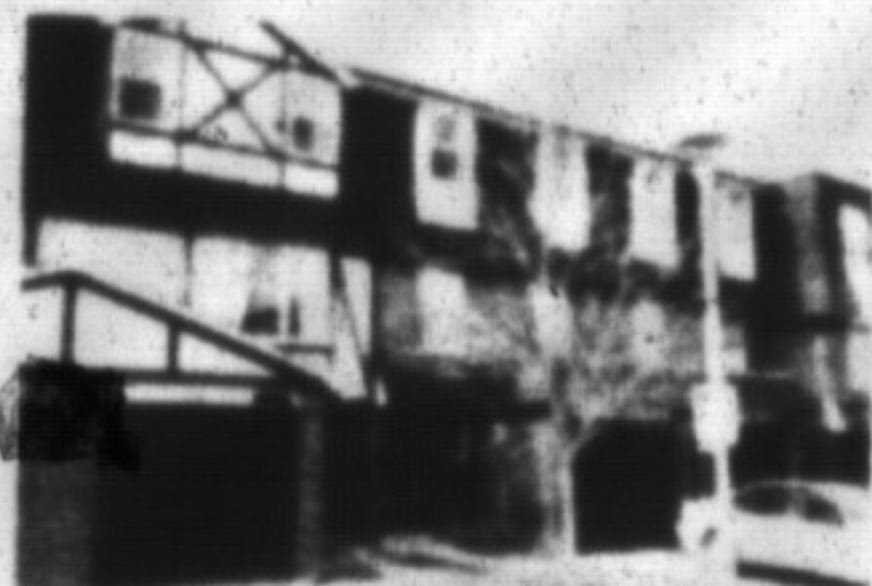


Gary Thomas
 Broker/Owner
878-2365
 Res: 335-8888
 or: 826-1030



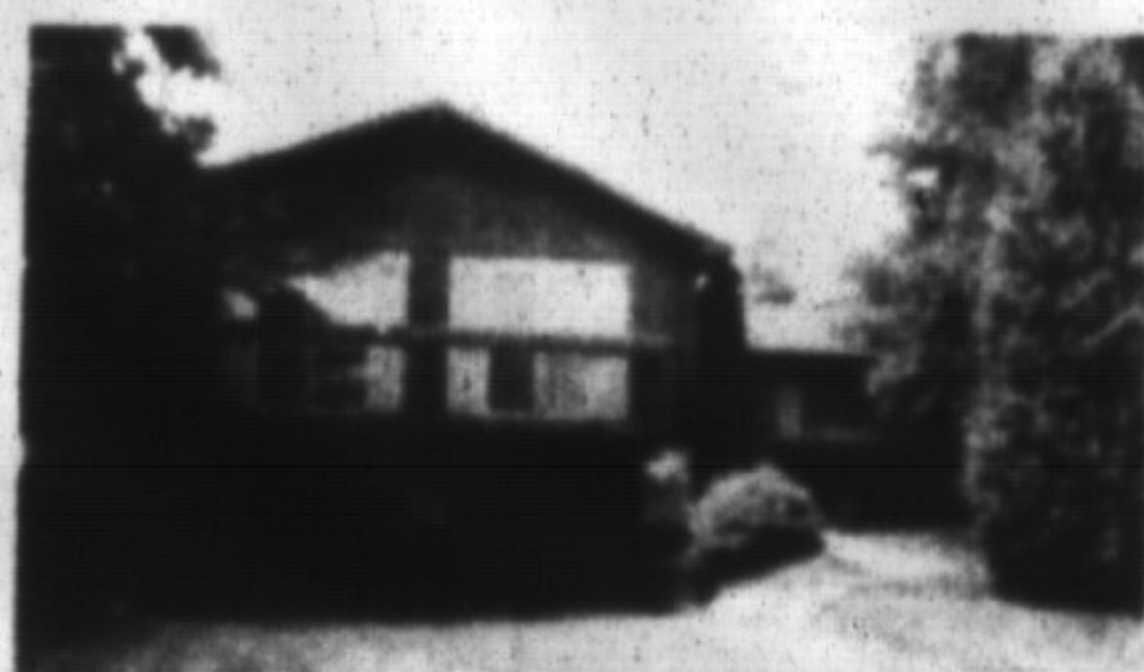
REACHED THE TOP OF THE CORPORATE LADDER?

If you've found success then this home is for you! Beautiful 3700 sq. ft. custom built two-storey home set on 1.36 acres features 4 bedrooms, 2 1/2 baths, main floor family room and den with oak trim, balcony off master bedroom - ensuite with whirlpool, sliding glass doors to deck, sun room, double garage and interlocking driveway. Many features are included such as security system and central vacuum system. Call Gary for more information. Asking \$539,000.



STARTER HOME DELIGHT

Three bedroom townhome in central location offers two baths, finished rec rm and single car garage as well as the peace of mind of complete maintenance. Enjoy your weekend leisurely at \$152,900 - call Gary Thomas for more details.



LOOKING TO RELOCATE?

Come on down and see this excellent multi-level sidewalk in Donset Park that's all decked out! Close to schools and shopping and in impeccable condition this home features 3+ bedrooms, 4-piece bath, cathedral ceiling, a balcony from living rm and dining rm and a 16'x12' cedar deck out back. What a find at \$189,900! For more information, contact Gary Thomas.



TIMELESS CLASSIC

140 years of charm, character and hood looks permeates the stone walls on this handsome century home set on 28+ acres. Featuring three bedrooms, two baths, barn, drive shed, screened-in porch and so much more. Asking \$499,000 - call Gary Thomas.

FOR LEASE

- Brand New Commercial Building
- Central Location, Bronte Street
- 1,000 sq. ft.
- 6 Units Available
- \$11.00/sq. ft.

Call Gary Thomas for more details.

Thinking of making a move?



PHIL PRESTIDGE
 878-2365
 878-6924



WOODWARD AVE. TOWNHOUSE

- Quality finish top to bottom
- Three bedroom townhouse "By the Oaks"
- Close to schools & parks, pool, rec centre
- Quiet neighbourhood
- Seldom do you get such an opportunity

Call Phil today.
 Asking Price \$154,900

INDUSTRIAL ACREAGE:

- 19.75 acres with 401 & Steeles Ave Frontage
- designated industrial
- just east of James Snow
- call Phil for details



LINDSAY J. McLAREN
 Office: 878-2365
 Res: 854-2451
 Pager: 878-2020
 Tor. Line: 826-1030



CAMPBELLVILLE COUNTRY BUNGALOW

Located on a paved road just one mile south of Campbellville set on a 1/2 acre this country home is an excellent starter home with great potential. Featuring 3 bedrooms, large living room, 4 piece full basement, woodstove/eat-in kitchen, 4 piece bath and a separate 25'x22' garage. Call Lindsay for more details.

LINDSAY J. McLAREN Asking \$179,900



HISTORICAL VICTORIA STREET

Restored brick home with 4 bedrooms, 2 baths and 3 fireplaces in older Milton is one of Milton's historical homes. Featuring 3,000 sq. ft., an enormous formal living room with f/p, large dining room, main floor family room with vaulted ceiling, brick fireplace, bar and walkout to deck. Kitchen has custom cupboards with built-in laundry area. MBR with f/p, 3 other spacious bedrooms, central air conditioning and air cleaner. An excellent home for family or entertaining complete with historical charm. For more information or an appointment to view, call Lindsay J. McLaren.

WAS \$459,000
 NOW \$439,900



BROOKVILLE ESTATES

Gorgeous, quality built approx 3300 ft. bungalow on a very private lot in a prestigious subdivision features a fantastic living room, dining room, den, custom kitchen, solarium, central air, central vac 2+1 garage and interlocking drive. Too many quality features to mention, so call for more information.

LINDSAY J. McLAREN Asking \$679,900



CAMPBELLVILLE ESTATES—BOLAND CRESCENT

Beautiful contemporary home on gorgeous lot in prestigious subdivision offers 4 bedrooms, 2-1/2 baths, sunken living area with fireplace and separate dining room, den, formal foyer, 3 skylights, family room has brick wall with fireplace. Country kitchen features pine cupboards, eat-in area, large deck and overlooks sunroom. Master bedroom has separate dressing area and ensuite in cedar with whirlpool. This home is in exceptional condition. For your showing call Lindsay J. McLaren.

Asking \$615,000



CENTURY STONE CLASSIC

Beautiful 1 1/2 century stone home on 14 acres is in an ideal location just minutes from Milton, Oakville and Burlington. Pine kitchen open to family room with walkout, 4 bedrooms, fireplace, woodstove, 2 baths, inground pool and insulated workshop. Originally a Dairy farm, this property is mostly open and ideal for a hobby farm or horses. Call Lindsay for more details.

LINDSAY J. McLAREN Asking \$625,000



PRESTIGIOUS LOCATION

Charm and elegance permeates the remodelled brick Victorian home. The formal living room, dining room, front foyer and completely restored kitchen and baths, invite elegant entertaining. Three large second floor bedrooms with master suite and adjoining dressing room, ensuite and whirlpool, offer all the amenities of luxury living. The prestigious location, backing onto parkland, makes this a must to see.

LINDSAY J. McLAREN Asking \$435,000