



Lamont Leone **
Manager



Wendy Oleszkowicz



Gayle Ford



Repee Harrold *



Rudy Arbeiter *



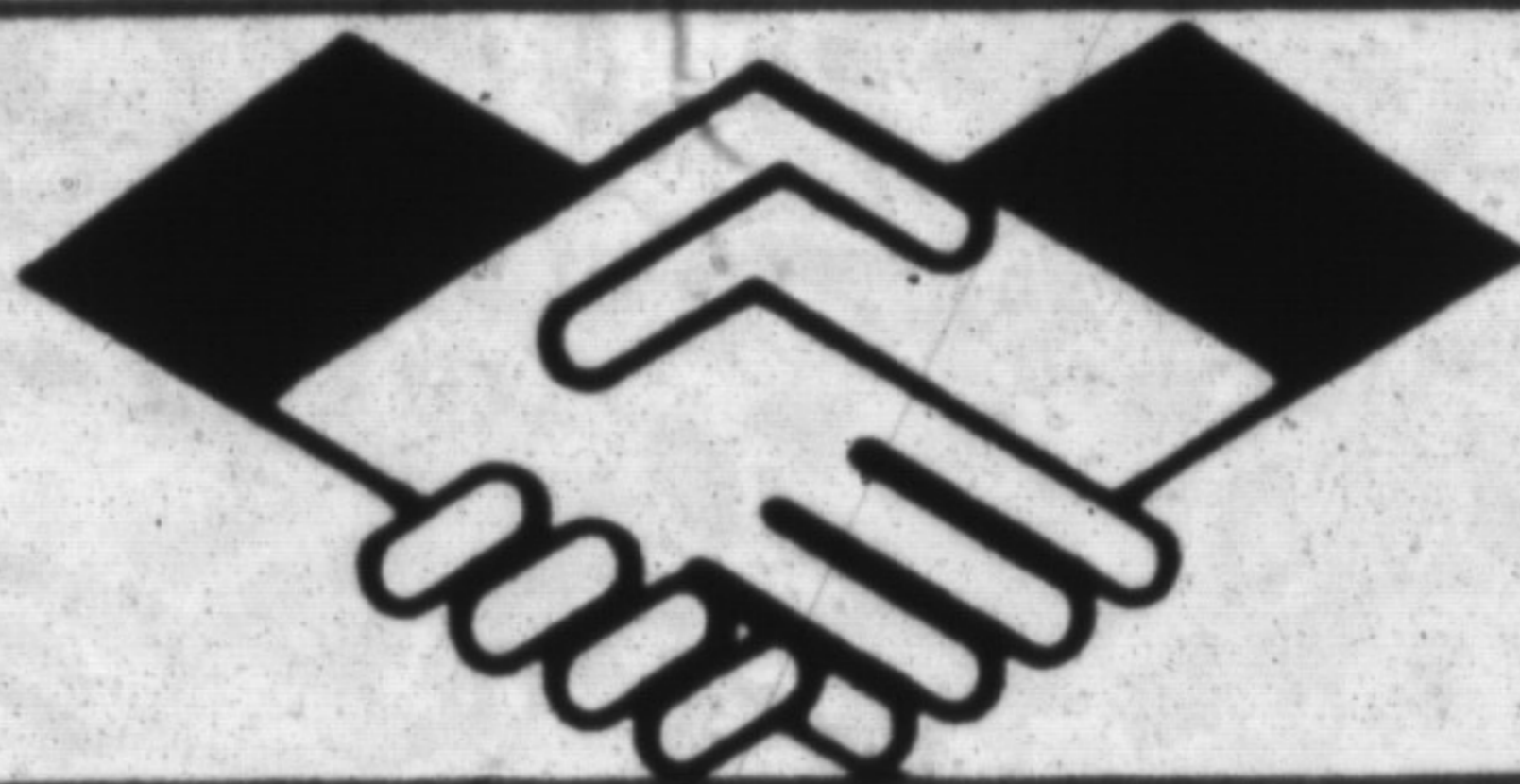
Sandra Logie *



Donna Syms *



Karen Irvine *



LOOK NO FURTHER! \$192,900
OPEN HOUSE SUN. SEPT. 10 1:30-4 PM
The bright and spacious 4 bedroom home is waiting for a new family to enjoy it. Main floor family room with f/p, finished lower level, central air and vac and a large fenced yard are some of its fine features. Excellent value in Acton. Call Barb Lafèche 878-8101



OPEN HOUSE SUN. SEPT. 10TH 1:30 - 4
Don't miss the opportunity to view this immaculate 4 br home featuring new european kitchen, large deck, central air, finished basement and super yard. Close to schools and priced to sell at \$205,900. Call Karen Irvine 878-8101.



ONLY THING MISSING IS YOU!
Vendor has been transferred leaving the well-cared for home open to offers. Upgraded carpeting, corner fireplace, finished rec room and spacious bedrooms are just a few of the features. Call Rudy Arbeiter or Denise Kerstke 878-8101/878-8101.



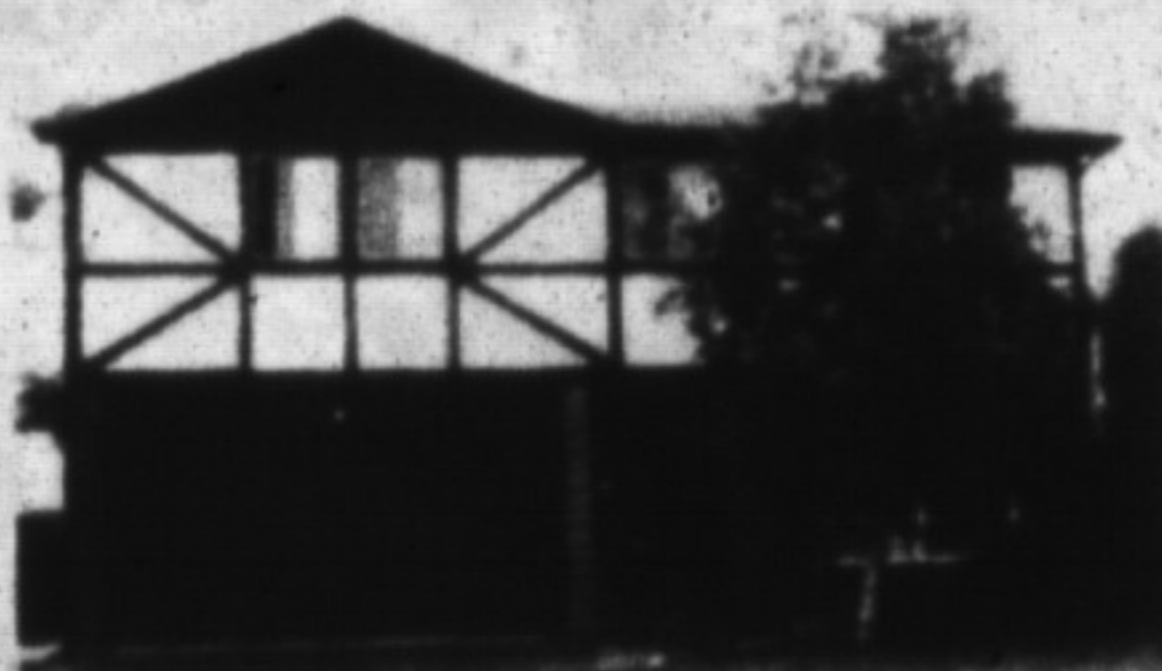
CENTURY FARM - 90 SCENIC AC.
\$1,900,000. Beautiful 1843 2-story stone house with 1-story stone wing & attached stone carriage shed nestled very secluded at the end of a long maple-lined lane & surrounded by its 90 ac. of very scenic land with 3 ponds & mature bush. This early Canadian features: orig pine trim, fls. dr's. & 3 FP's. Atmospheric 2-story stone barn etc. A rare gem. Inge Winther 878-8101.



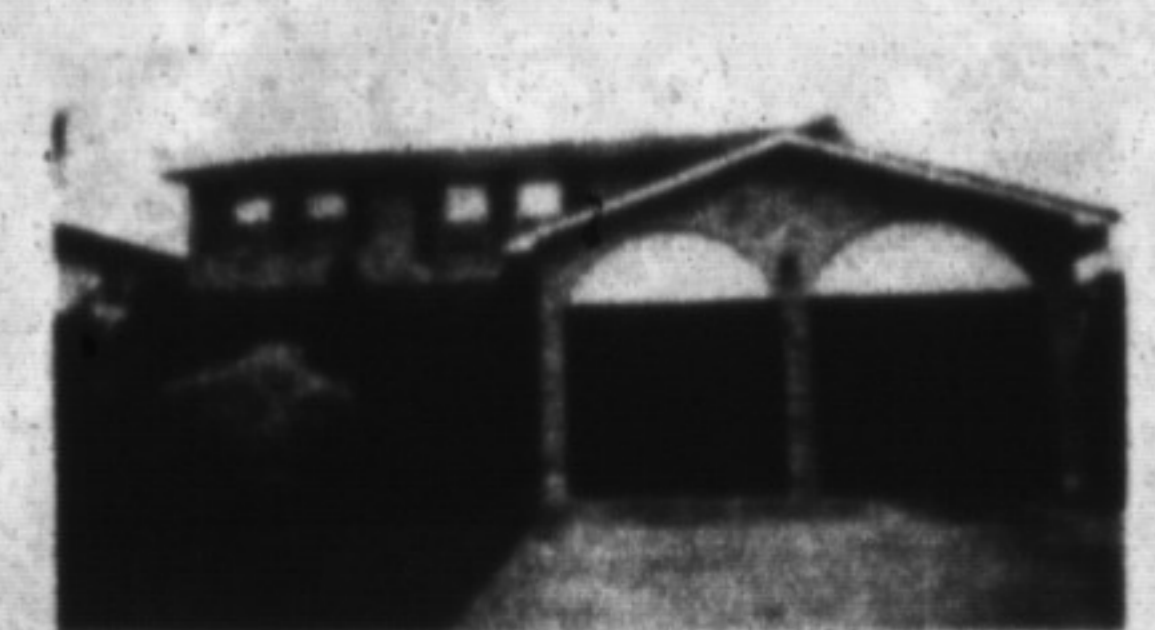
4500 Q. FT. - FOR LEASE
Zoned C-3 on highway 25 (just N. of 401 - behind Chalet Rest). Incl. 2 front offices, 3 transport truck service bays with 13.6 ft. overhead door, S-2 washrooms & mezzanine (sm. office & storage). Call Sandy Del Papa 878-8101



ALMOST "TOP OF THE WORLD"
\$699,000
Perched on the brow of the escarpment beside the craggy rock-face of Rattlesnake Point, this lovely home on 19+ ac. offers privacy and a view unequalled. There's 4 bdrms, new oak kit, pool & more! Call Sandy Del Papa 878-8101



LOTS OF ROOM FOR THE GROWING FAMILY
\$248,900 this super family home boasts a great location on a quiet cres. good sized yard, 4 oversized bdrms., 3 washrooms, main flr. fam. rm., fin. rec. rm. & more. Don't miss out. CALL TODAY. Sandy Del Papa 878-8101.



CLASSIC BEAUTY! GREAT LOCATION \$269,900
Careful buyers - be sure to see this traditional 4 bdrm. Beauty, choice location, brick walkway & patio, fully fenced pie-shaped lot, main flr. fam. rm. & laundry, 3 washrooms & more. CALL TODAY. Sandy Del Papa 878-8101.

2 TREED BUILDING LOTS

\$184,900 each
Looking for a 3/4 acre building lot with easy access to the 401 and a beautiful view of the escarpment?
Call Sandy Del Papa 878-8101

VICTORIA PLACE

Situated close to Victoria Park on Main St. offers 12 residential condominium units of unique design & value plus 2 professional offices in the lower level. A truly convenient location to downtown Milton. Please contact Audrea Lear-Costigan or Sandra Logie at 878-8101 to discuss your advance reservation.

A LEADER IN



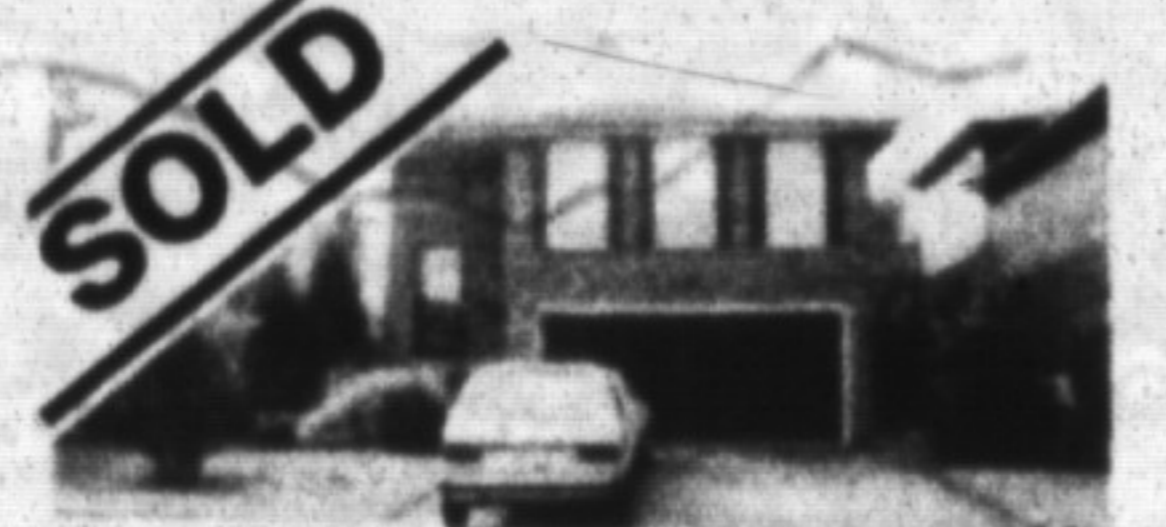
388 MAIN ST. EAST

878-8101
(Tor. Line) 826-9218
Toll Free 1-800-263-4176

- Karen Irvine 878-4154
- Donna Syms 878-3112
- Lee Bunker 519-856-4352
- Denzil Lawrence 878-1944
- Margaret Swann 878-7887
- Ed Proveau 878-1707
- Joyce Hagenik 878-1084
- Inge Winther 853-1980
- Norma Proveau 878-1707
- Brenda Johnson 878-5788
- Paula Rasmussen 854-0178



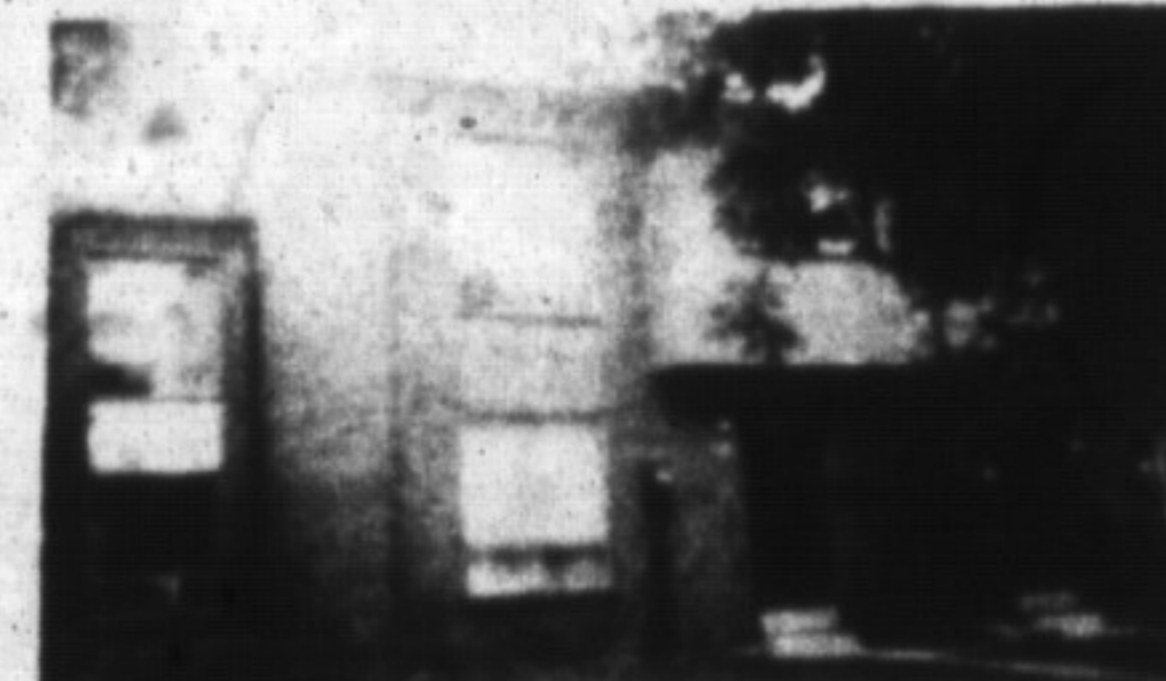
LARGE GEORGETOWN AREA HOME
Set on huge lot 20 mins from Meeseetugi. Big bdrms, separate dining room, eat-in kitchen, fam. room w/ fireplace & walkout. Large bright living room & 10' basement. Good value at \$313,500. Call Repee Harrold 878-8101.



IF COMFORTS COUNTS...
This spacious 4 bedrm backsplit in a good location. Main floor family rm & main floor laundry plus central vac & central air add to the features of this property. For more details call Sandra Logie 878-8101.



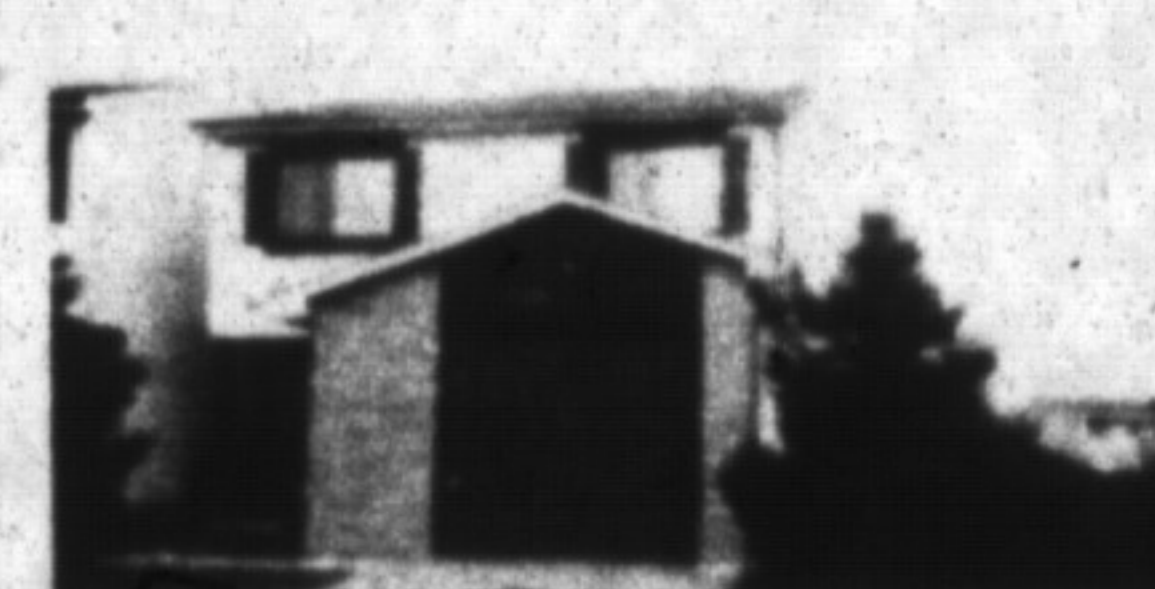
GO FOR IT - \$204,900
Fully finished 2 storey 3 bdrm home on a super large lot. Pine floor entrance, additional upgraded kitchen cupboards, 2 baths, 4th bdrm & rec room in the basement & close to schools. Call Barbara Crowe 878-8101.



SHOWCASE QUALITY
Nestled in a prestige complex close to everything, this lovely home with cent. air & garage is sure to please! Large sunny kitchen has walkout to private 2 level deck. Super rec room. Must be seen. Jean Thompson 878-8101.



BETTER THAN NEW - \$329,900
3 bdrm beauty set on treed 3/4 acre lot just 15 mins from Milton 'GO' fenced yard, huge deck off main floor fam. room, 3 bathrooms & many upgrades. See this 3 yr. new home with Repee Harrold 878-8101.



A DEAL YOU CAN DIVE INTO \$224,900
This unique 3 bdrm, 5 level, open concept design features cathedral ceiling in living rm., main flr. fam. rm. with fireplace and inground kidney shaped pool in fully landscaped yard. Mark Symonds 878-8101 or Tor. line 826-0218.



RE-BORN VICTORIAN HOME
Completely restored brick home with a complimentary board and batten addition. Offering 4 bns, fam. rm. with FP, M.F. laundry, breathtaking kitchen. On a fabulous 10 acres with a large stream fed pond \$749,000. Lee Bunker 878-8101.



JUST LISTED
4 BD. RM. TOWNHOUSE
End unit 2 baths decorated in neutral tones immaculate. Asking \$158,500. Please call A. Lear-Costigan 878-8101.



1890 CUT STONE 10 MIN. TO 401
Century home 4 large bdrms 1 1/2 baths eat-in kit. with adjoining family rm large living rm with FP, dbl garage large barn all this on 25 acres great location. \$650,000. Please call for more details. Denzil Lawrence 878-8101.



HEY LOOK THIS ONE OVER
Almost 4 acres backing on a quiet conservation area Pick your own apples keep your horse this is a nice family home with 4 bdrms 1 1/2 baths a beautiful sun porch. Please call to view. \$379,000. Denzil Lawrence 878-8101 or 826-9218



Barbara Crowe *



Ed Proveau *



Paula Rasmussen *



Mark Symonds *



Inge Winther *



Audrea Lear-Costigan *