



**PHIL  
PRESTIDGE**  
878-2365  
878-6924



**HOT OFF THE PRESS**

- Three bedroom townhome "By The Oaks"
  - Close to schools and parks
  - Quiet neighbourhood.
  - Seldom do you get such an opportunity
- Call Phil Today



**Gary Thomas**  
Broker/Owner  
878-2365  
Res: 335-8888  
Tor: 826-1030

**FOR LEASE**

- Brand New Commercial Building
  - Central Location, Bronte Street
  - 1,000 sq. ft.
  - 6 units available
  - \$11.00/sq. ft.
- Call Gary Thomas for more details



**GREAT DEAL**

Spacious split-level in Dorset Park offers the convenience of proximity to schools and shopping as well as a variety of other 'family-friendly' features. 3+2 bedrooms, 2 baths, large eat-in kitchen with lots of cupboards, main floor family room, Acorn fireplace in living room, single car garage and an above ground pool make the ideal for the growing family. Don't miss your chance at \$209,900. Call Gary Thomas



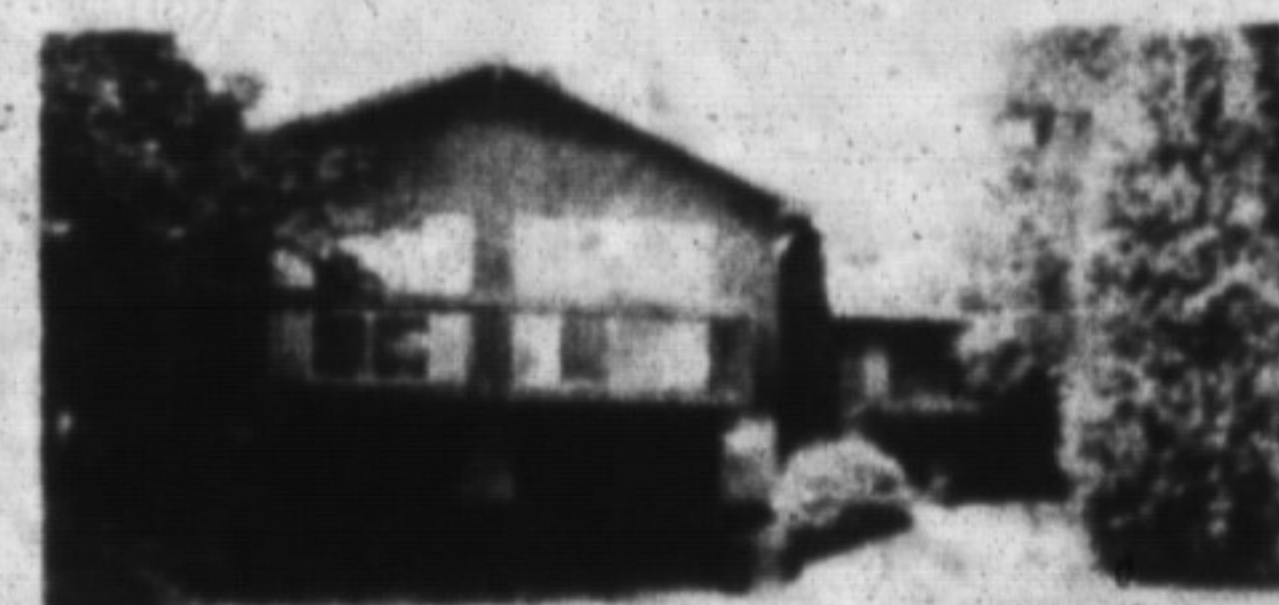
**CHARM - CHARACTER PLUS**

You get more than enduring stone walls in this 140 year old century home - you get charm, character and beauty from the past together with all the modern conveniences. Set on 28+ acres this home has barn, drive shed, screened in porch, three bedrooms, two baths and so much more. For your showing call Gary Thomas. Asking \$499,000.



**OFFERING SO MUCH**

Two-storey brick farmhouse on 10 acres of mostly cleared land with a picture perfect pond and beautiful trees. The home offers an electric fireplace, woodstove in family room, pantry, 3 bedrooms, two baths and plenty of peaceful serenity. Call Gary Thomas for all the splendid details. Asking \$298,500.



**ALL DECKED OUT!**

Come on down and see this excellent multi-level sidesplit in Dorset Park, close to schools and shopping. In impeccable condition this home features 3+ bedrooms, 4-piece bath, cathedral ceiling, a balcony from Living room and Dining Room and a 16' x 12' cedar deck out back. What a find at \$196,500. For more information, contact Gary Thomas.

# RE/MAX<sup>®</sup>

Miltowne Realty Corp.

878-2365

**Newell was here**



**JUST LISTED**

Newly decorated semi on good sized lot. Asking \$184,900. Call AUDREY at 878-5339 or 878-2365



*For the same  
Prompt,  
Professional  
Service....*



AUDREY & KEN NEWELL  
ASSOCIATE BROKERS

Call -  
878-5339  
or 878-2365

Ask for  
Associate Broker

**Audrey  
Newell**  
Serving Milton  
& District  
since 1974



**ANGELIKA BEISNER** B.A. Sc.  
Bus: 878-2365 Res: 878-7057  
24 hr. pager

754 Roseheath Drive



**Bronte Meadows Backsplit \$195,000  
Reduced \$192,900**

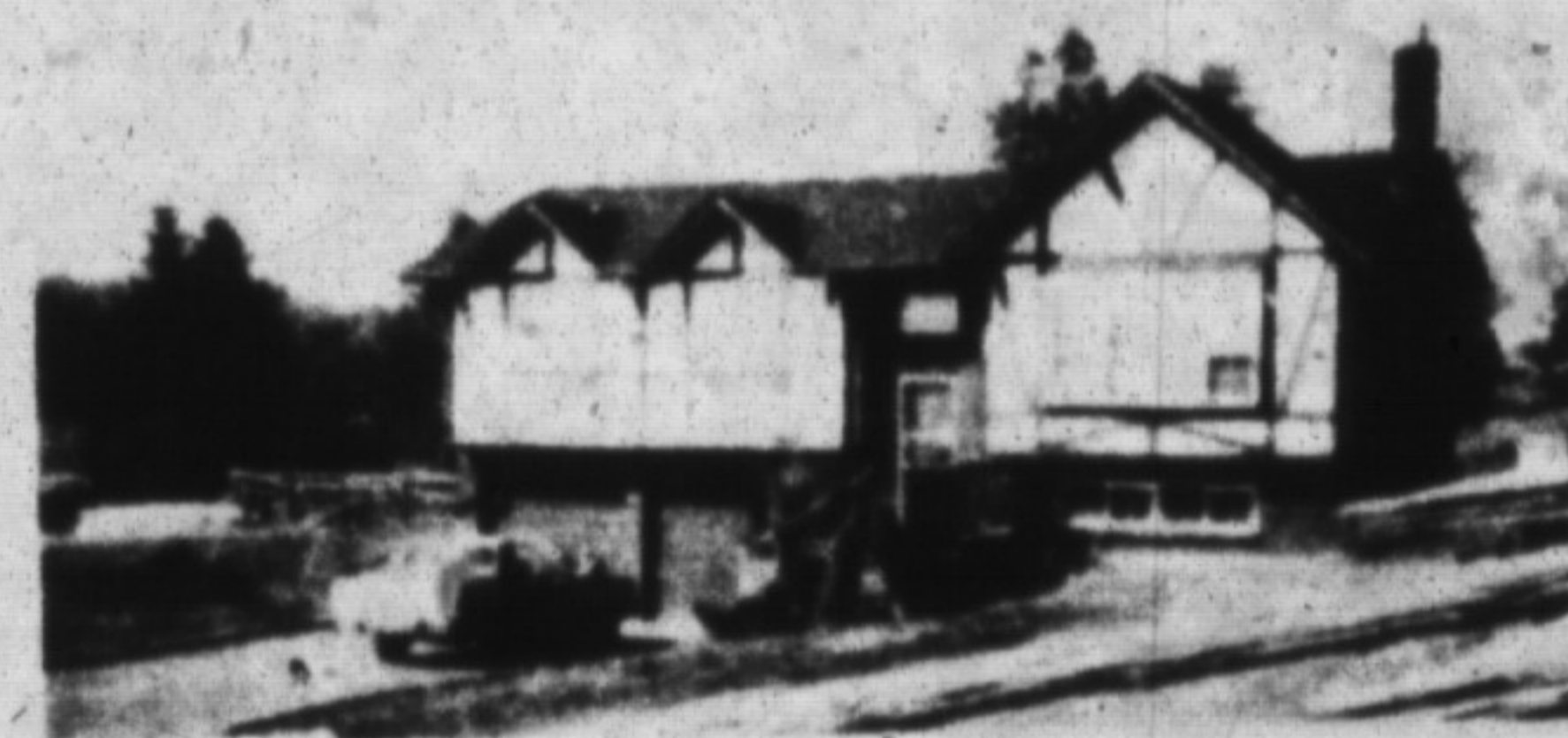
**OPEN HOUSE**

Sunday Aug. 20th, 2:00 - 4:30 P.M.

Provides all the elements which equal a simply delightful home! Approx. 1600 sq. ft. of living space with main floor family room, eat-in kitchen, and walk-out from dining room. Decorated lovingly in neutral tones. Its a sure winner!

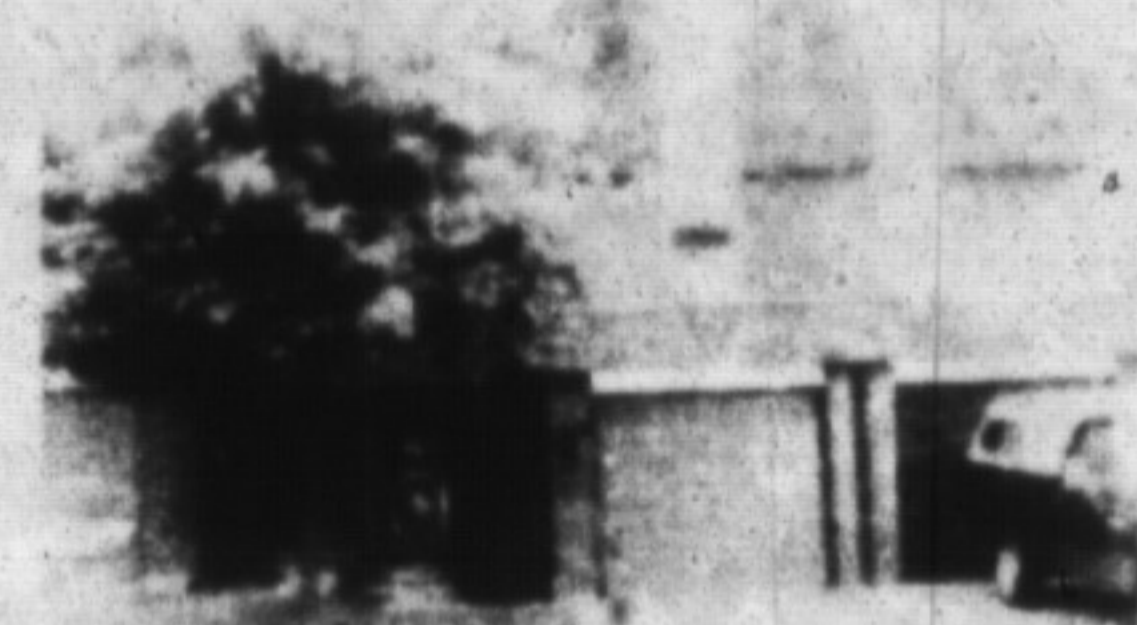


**ALAN  
BROOKS**  
878-2365 Bus.  
875-0067 Res.  
826-1030 Tor.



**COUNTRY LIVING FOR LESS THAN \$200,000**

An opportunity to inspect a super raised 3 bedroom bungalow -plus- newly decorated-large lot. This home could provide you with affordable country living you've been looking for. Call Alan or Carol Brooks for further details. Was \$229,900. **NOW \$199,900.**



**TOWNHOME LIVING**

Spotless, well maintained townhome in family neighbourhood features 3 baths, 3 bedrooms and is a fantastic starter home opportunity. DON'T WAIT! Call Alan today. \$155,000.



**CAROL BROOKS**  
878-2365 Bus.  
875-0067 Res.

**Beautiful  
Rural Living**



**COUNTRY ESTATE**

This 1860 restored stone home rests on 10 acres with a pond, mature trees, guest house and excellent bank barn. Located just north of Campbellville, the charm and character of this property is equal to the beauty and comfort of the principal buildings. Asking \$899,000