

## Understanding children's logic can stump the best

from CHILDREN'S on page LS1 rule onto the piece you are cutting and they will all be the same length, was my instruction. And they promptly cut the end off the yardstick.

Another milestone in calculating distance and using a practical example was sending Angus McGee to caretaker Robinsons Farm for a key. I drew McGee a diagram of a rectangle, the two horizontal lines being the sideroads and the vertical lines representing the concession roads.

"McGee, I appreciated your effort going for the key, but, why, when I asked you to work out the easiest way to go you turned right when you left the school?"

"Cause it's downhill," he replied. How do you answer that kind of logic? It gets worse when it appears in written form. On a test the pupil was given these facts. A bath holds 40 gallons of water, with the tap running it fills three gallons a minute. With the plug out it drains at two gallons a minute. With the tap running and the plug out how long does it take to fill the bath?

One answer: "A lot quicker if you

had left the plug in."

You never know where little gems of wisdom will settle or rub off on your pupils, or how literally they accept your words.

Take young Norman Woburn, well he wasn't so young when I saw him at Al Nobleton's farm. He's about 18 now and a growing concern, a mouthfull of teeth and always smiling.

"Well, Norman Woburn you've grown. What are you doing now?"

"Oh hi Mr. Biddle. I'm working here for Mr. Nobleton and thanks to you I'm writing his letters, doing the books and accounts and we made a profit this year thanks to you and your friend Johnny."

"Johnny who?" I enquired.

"You know Johnny with the percentages," he enthused, warming to a subject that was a stranger to me.

"You know the Johnny you talked about - you know - if Johnny had ten of this and ten of that what was

the percentage? - Mostly it was five percent and if Johnny can do it so can I. I told Mr. Nobleton about your friend and I worked out five percent on his feed and we're making a profit. I can't wait until we get to use some ratios."

I wished him well and assured him he will go a long way, and yes I would say hi to Johnny. It was then I bumped into Nobleton.

"Al, that's a good lad you've got working for you and he seems to be enjoying it."

"Yes a fine lad," nodded Nobleton, then pushing his cap on the back of his head and giving me a deadly serious stare. "He's got my feed business booming, just with a simple five per cent. He got it from you and your friend Johnny, so he told me."

He sucked in air to emphasize the point.

"We are making a fortune this year. What we sold for \$5 a bag last year,

we sell for \$7.50 now, and that's a good five per cent."

The boy should go far.

If you don't understand logic you are not alone but what ever you do don't challenge one of these kids in public. I was visiting a high school. We were there for a music recital and all the kids were assembled in the auditorium. One student in particular was acting up when the principal admonished from the stage.

"You there. Sit down, be quiet and pay attention. You may learn something that will help you when you grow up, or you'll come to nothing."

"Don't worry, I'm going to do something you can't do," snapped back the miserable kid.

The principal should have left well alone, but instead he broke the silence with a holier than thou "and what's that?"

"Run for the school board" was the reply amid gleeful approval.

## Day care meeting planned

An upcoming meeting at Milton town hall will discuss the issue of day care.

The meeting will be held for people interested in providing private home day care.

An outline describing Halton region's activities in the field as well as how to become an independent private day-care operator will be presented at the Wednesday, Aug. 23 meeting.

Guidance for gaining the necessary government approvals will also be provided.

The meeting will begin at 7:15 p.m.

The Canadian Champion, Wednesday, August 16, 1989—LS7

BUY • SELL • RENT • TRADE  
**WANT ADS DO IT ALL!**

Call  
**878-2341**

Run a Classified Ad in The Champion at the regular price and have it repeated in the Champion Weekend edition at 1/2 price.



## MILTON FAIR LOOKING FOR A QUEEN

So you'd like to be a beauty queen?

Applications are now being accepted for the Milton Fair Queen Contest, to be held September 22.

Applicants must be between 18 and 23 years of age and meet other criteria.

Contestants will be judged on a two minute speech, a private interview, personality, appearance and general conduct.

The winner must agree to attend all events representing the Milton Fair for one year, including the Ontario Association of Agricultural Societies Convention in February, and the Canadian National Exhibition Queen of the Fairs contest in August.

For more information or an entry form call **876-1331**.

I ♥ MILTON

The Next Time You Go To Toronto "THINK! of LOOKING and SHOPPING in "MILTON" FIRST!"

WILL MAKE US NO. 1 IN MILTON

OUR COMPETITION SHOPS US...YOU SHOULD TOO!

1 ONLY - WON'T LAST



COLT 100 DL - Cloth bucket seats w/recliner, 1.5L, E.F.I. Engine, auto transmission, Steel belted radial tires, AM/FM E.T.R. stereo w/4 premium speakers, digital clock, driver's seat w/height control, power steering, factory tinted glass, black 2 door with special california striping. 3 year, 60,000 warranty bumper to bumper.

Gets better mileage than Nissan Sentra, Toyota Tercel, Mazda 323\*

\* Fuel consumption as reported by Transport Canada 1989 Fuel Consumption Guide.

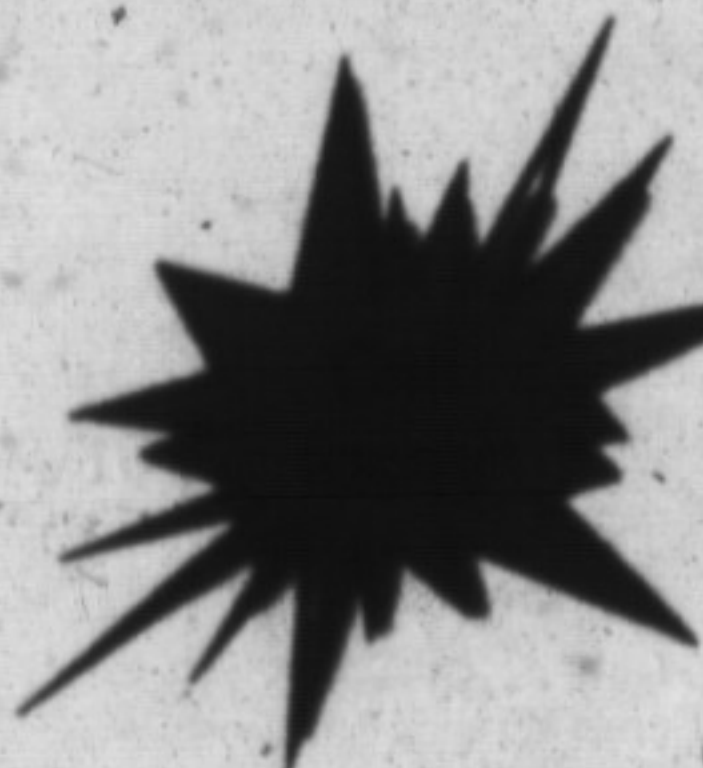
OVER 100+ NEW & USED VEHICLES IN STOCK

LOW MAINTENANCE. GOOD ON GAS.



COLT 100 LX TURBO SEDAN - Red 4 door - Cloth bucket seats w/recliner, 1.6L turbo E.F.I. Engine, 5 sp. transmission, Steel belted radial tires, AM/FM E.T.R. stereo w/4 premium speakers, digital clock, driver's seat w/height control, power steering, turbo package, sports luggage rack, 3 year, 60,000 warranty Bumper to Bumper, 42 miles Per Gal. Combined Maintenance Free Battery.

HURRY FOR BEST SELECTION.



878-2328  
Tor. Line 542-1541



**Kels**



PLYMOUTH • CHRYSLER • DODGE-TRUCKS

"ALL ROADS LEAD TO MILTON'S FINEST"

500 BRONTE ST., MILTON  
878-2328 -  
Tor. Line 542-1541