

SUMMER SALE

The perfect blend under one roof!



A HOME FURNISHINGS SHOPPING EXPERIENCE BEYOND COMPARE

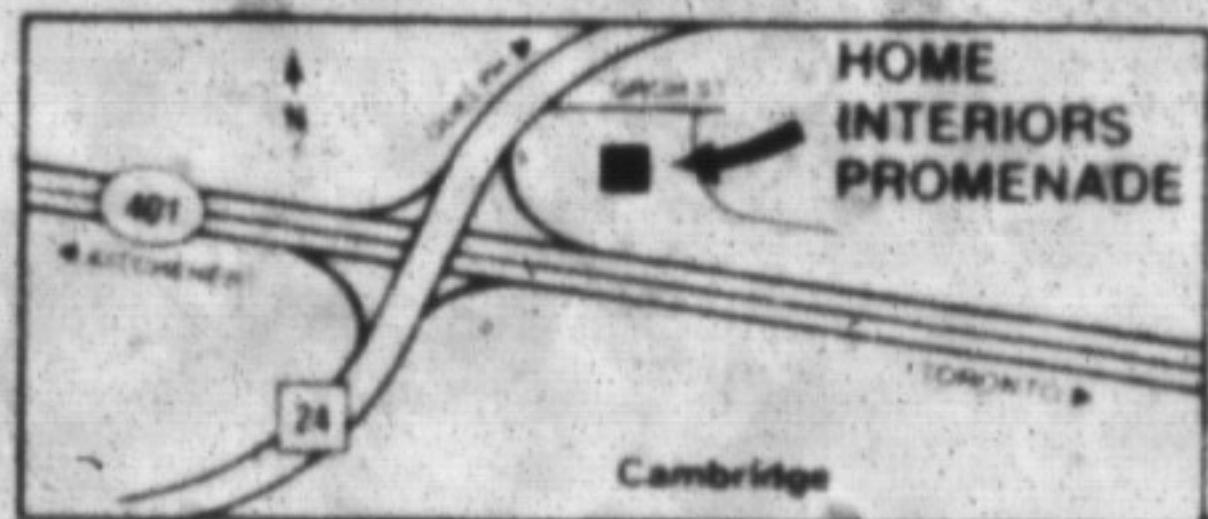
Our exciting Home Interiors Promenade is a totally new and different concept in home decorating. From the moment you enter... it's a whole new world of ideas from a hand picked collection of prestigious stores, bringing you fresh ideas to further enhance your lifestyle! Treat yourself to enjoyable shopping... see the exciting SUMMER SAVINGS... take your time and visit each store for the many ideas and helpful advice to put the finishing touches to your home. Relax, enjoy a beverage, a light lunch or complete dinner while you gather your thoughts, you won't be rushed!

HOME INTERIORS PROMENADE IS A FABULOUS GROUP OF RETAILERS (UNDER ONE ROOF) COMMITTED TO BRING YOU BETTER QUALITY, BETTER DESIGNS, BETTER SELECTION AND TERRIFIC DECORATION IDEAS!

- AVON LIGHTING • AXEL SCHRUPP
- BANNISTER'S GALLERY • THE BRANDY TREE
- DECOR PLUS • ELMIRA STOVE & FIREPLACE
- GEORGE H. JENNER PIANO SALES & SERVICE
- GOETZ PHARMACY • IT'S BEDTIME! IT'S BATHTIME TOO!
- JENKINS INDOOR LANDSCAPE
- LINDAL CEDAR SUNROOMS • MODERN APPLIANCE CENTRE • BANK OF MONTREAL
- N & Z CLEANING CENTRE • NICK MARCELLA CARPETS • NULOOK BLINDS & DRAPERIES • OLD ONTARIO HOUSE • SENSATIONS RESTAURANT
- SMITTY'S FINE FURNITURE
- SUGARCANE WICKER & RATTAN
- SWISS PANTRY • ZEHR'S

You're only minutes away...

DISCOVER



150 HOLIDAY DRIVE
OFF HWY 24
JUST NORTH OF HWY 401
CAMBRIDGE

OPEN MONDAY AND TUESDAY 9:00 AM TO 6:00 PM
WEDNESDAY, THURSDAY, FRIDAY 9:00 AM TO 9:00 PM
SATURDAY 9:00 AM TO 5:00 PM

History buff gets town a plaque

The Guidebook to Ontario Historical Plaques has a Milton entry now, thanks to the work of Miltonian Leonard McNeil.

Mr. McNeil, a retired school superintendent, noticed the lack of Milton representation in a previous edition of the book so he set out to get an historical plaque for Milton.

Now, on Brynte Street, across from the Robertson-Whitehouse Company, stands a plaque which reads: *The P.L. Robertson Manufacturing Company. The first firm in the world to produce socket-head screws, the P.L. Robertson Company was established in 1907. Socket-head screws found a ready market among boat builders, electricians, furniture companies and the manufacturers of the Model T Ford.*

Mr. McNeil had some previous experience in the procedure for obtaining a plaque. In 1963 he presided over the erection of a plaque at the original homestead of Robert Baldwin, the man who set up the municipal system in Ontario. He was also the Ontario leader of the pre-Confederation Baldwin-Lafontaine government.

He presented a picture of the plaque unveiling to Robert Baldwin School in Milton three years ago.

In 1983, after speaking with the then 94-year-old Gordon McKenzie, the past president of the P.L. Robertson company and adopted brother of P.L. Robertson, Mr. McNeil began thinking about an historical plaque.

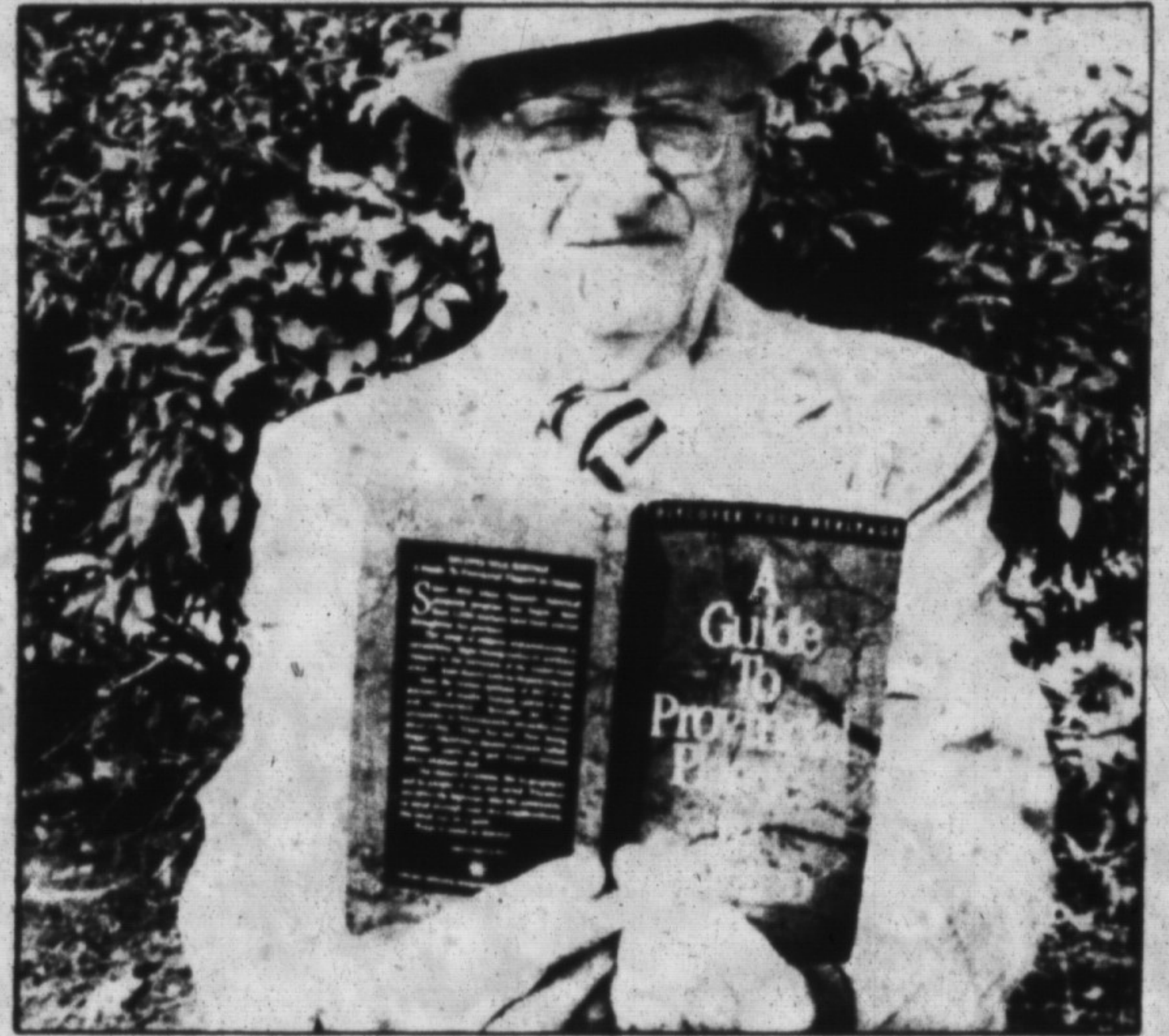


Photo by STEVE UHRANEY

Leonard McNeil, Milton's Citizen of the Year for 1987, was instrumental in getting the Ontario Heritage Foundation to erect a plaque honoring the P.L. Robertson Company and the invention of the socket-head screw here in Milton.

In March, 1984 he began research on the P.L. Robertson Company and prepared to approach the Ontario Heritage Foundation with his idea of a plaque commemorating the invention and manufacture of the socket-

head screw.

In addition to the P.L. Robertson plaque, Mr. McNeil is responsible for arranging the funds to pay for a plaque which designates the original P.L. Robertson home on Martin Street.

Flat Freddy's

FAMILY SPECIAL

For the month of August

Lunch or Dinner

Large 2 Item Pizza

or

Bucket of Spaghetti

Large Jug Soft Drinks

& 2 Beverages

\$15.95

FUN FOR THE WHOLE FAMILY



370 Main St.

878-2889

Wee Care Day Care Centre

"UNDER NEW MANAGEMENT"

NOW ACCEPTING APPLICATIONS FOR SEPTEMBER ENROLLMENT

- Stimulating environment providing creativeness, self discovery, and a positive social interaction with others.
- Transportation available to and from Milton public and separate schools.
- Planned trips and special events to Ontario Place, African Lion's Safari, farms, Safety Village and Bronte Harbour.
- Individual attention to satisfy your child's emotional and physical needs.
- Nutritional snacks provided
- Qualified and trained staff
- Enrichment and early learning programs
- Weekdays 7am - 6pm, year round

Offering pre-school programs

THE WELFARE OF YOUR CHILD IS TOP PRIORITY AT

Wee Care

Day Care Centre

25B Commercial St. Milton

878-7552

MILTON'S FINEST DELIVERY

- Milton, Cambridge, Acton, Hornby
- Inserted or Separate
- "One Day" delivery
- Printing and layout available
- Over 100 reliable carriers
- Choice of areas
- As low as \$35/m

FLYERS - CALL 878-2341
COUPONS - Circulation Department
CATALOGUES

Goldo RESTAURANT & TAVERN

Chinese Food, Steak and Seafood
Business Luncheons
• Fully Licensed under L.L.B.O.
Take-Out Service
459 Main St., Milton, 878-8814

OPTOMETRIST

Dr. Strohan

878-5882

Weekdays 9a.m. to 5p.m. Wednesday 9a.m. to 8p.m.

Happy 25th Anniversary



from your partner in crime!