

# Century 21

420 MAIN ST., MILTON 878-8495  
 Tor. Line 821-4764

Jim & Lorraine Kerr Brokers/Owners

Jim Kerr	878-8495	Kathleen Perfect	878-1575	Sandra Bailey	875-0037	Lynn Wardle	876-1554
Lorraine Kerr	878-8495	Dawn Pope	878-8495	Bill Gear	335-9689	June Warner	853-2918
William Lenzi	853-3797	Scott B. Prior	876-1251	Diane Gibbons	876-4247	Sonya Williamson	875-1924
Joel Manchisi	876-4247	James D. Snow	878-2172	Douglas Jones	878-4957	Ernie Zammit	878-9475
Don Pelz	878-1029	Joan Taitre	876-1575	Carlo Gaigrande	876-1031	Paddy Gill	878-0085
Nova Sparks Austin	878-6728	Jim Bailey	875-0037	Ron Twiss	878-4056		
Charles Kerr	338-7248						

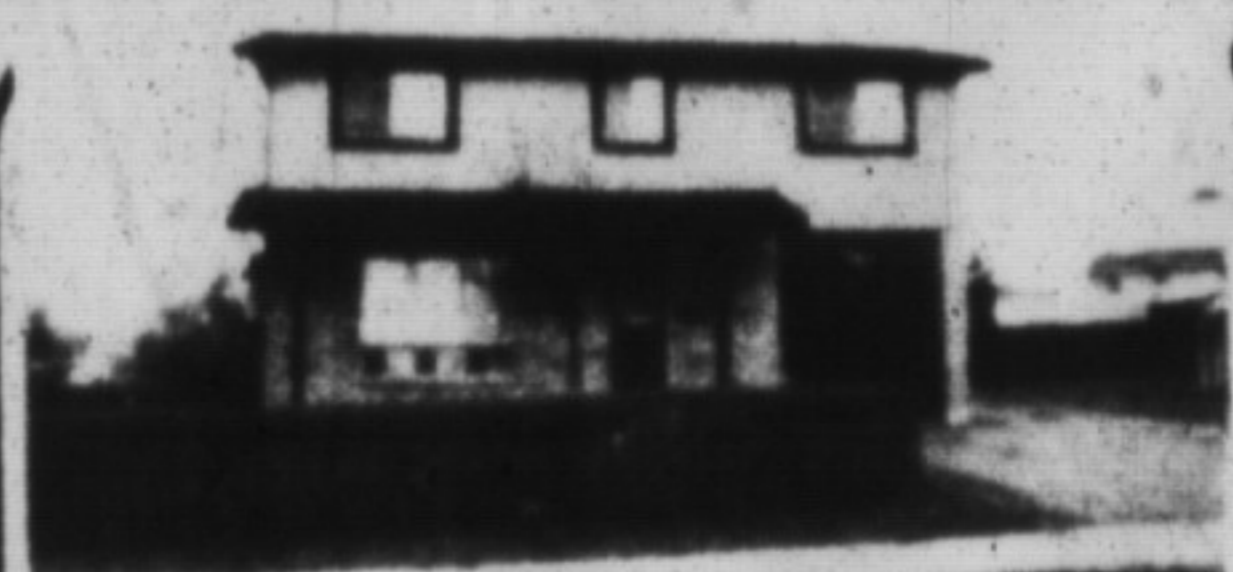
Office Staff: Marie Auster, Jennifer Coles, Barbara Wood, Lori Bishenden

Golden Real Estate Limited



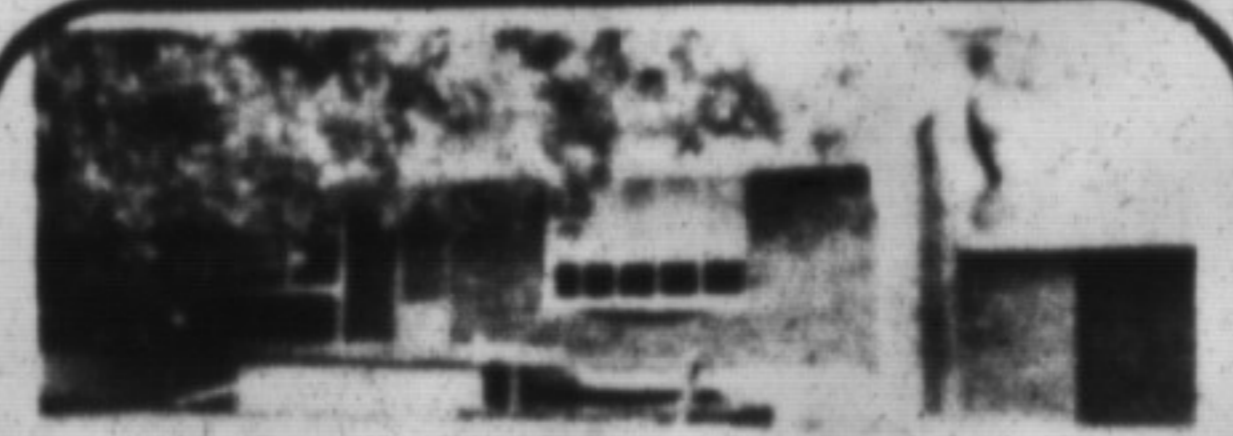
### HEY, LOOK ME OVER!

Come and view this 4 bedroom detached side-split with large private deck from the walk-out in kitchen. Large family room with fireplace and walk-out, central vac, new broadloom in 87' double paved drive. All this could be yours for \$278,900. For further details please contact JIM KERR at 878-8495.



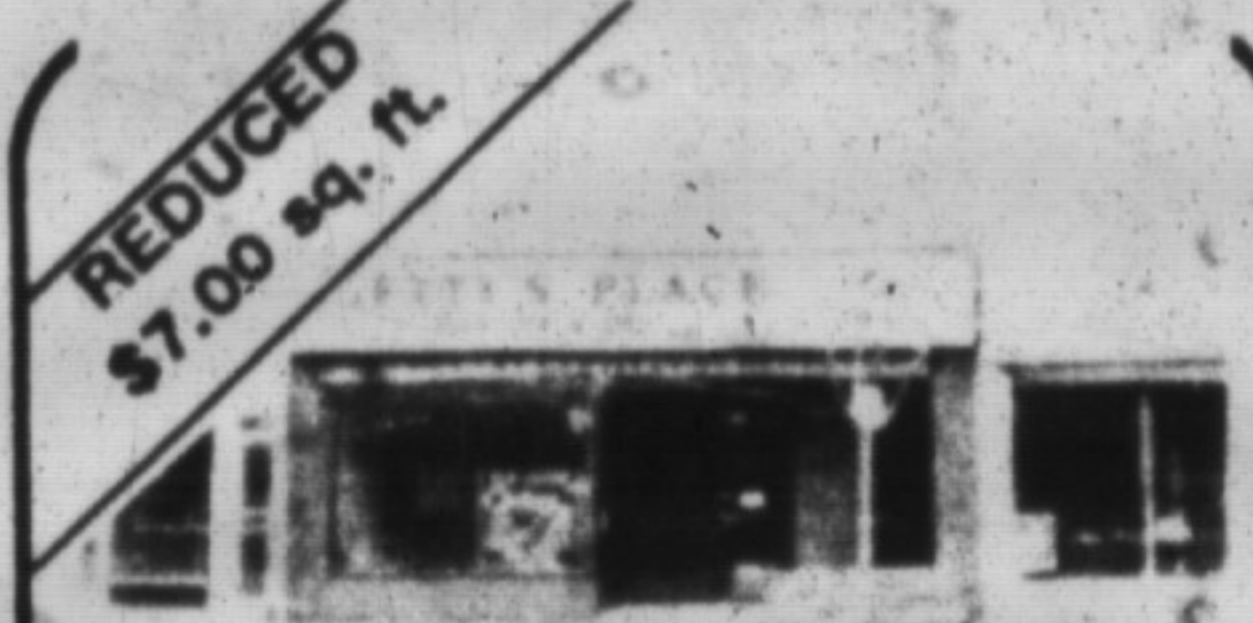
### PERFECTLY SUITED

to family living with plenty of room for growth in the four bedroom home on a large lot. Close to schools, parks and bus routes and affordably priced at \$189,900. Call KATHLEEN PERFECT for more details.



### NEW LISTING

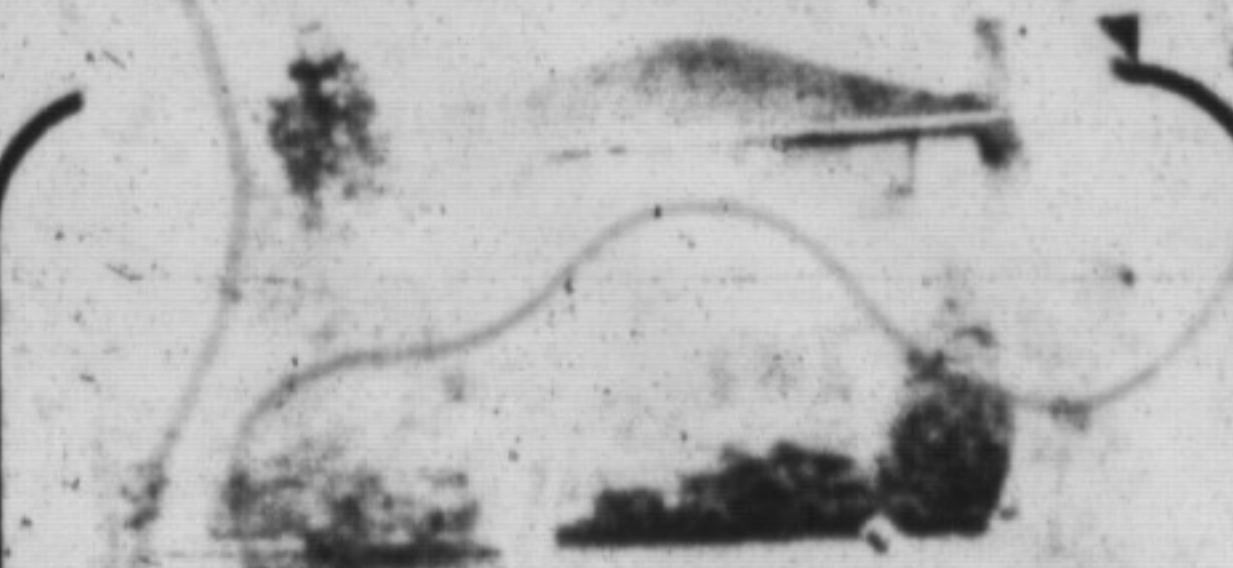
Approximately 1.3 acre property with all brick three bedroom bungalow. In-law suite and tastefully decorated interior. Beautiful trees and bushes surround this property. Asking \$279,500. Please call KATHLEEN PERFECT at 878-8495 for further details.



REDUCED  
\$7.00 sq. ft.

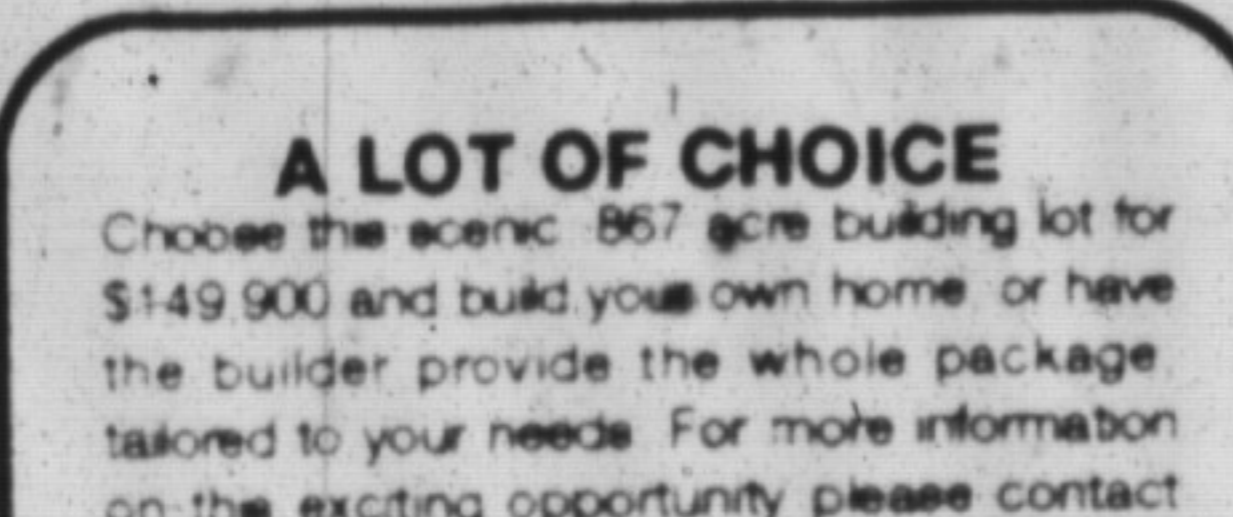
### 4400 SQ. FT. - MAIN STREET COMMERCIAL

Front and back entrance - Lots of Parking. The Price is Right! Please contact JIM KERR for further details at 878-8495.



### ATTENTION INVESTORS

Over 10 acres of land with a two-story home and gut buildings. This property is next to industrial land currently being developed and is now zoned agricultural. Asking \$1,300,000. For more information please call 878-8495 and ask for JAMES D. SNOW.



### A LOT OF CHOICE

Choose the scenic 867 acre building lot for \$149,900 and build your own home or have the builder provide the whole package tailored to your needs. For more information on this exciting opportunity please contact JAMES D. SNOW at 878-8495 or 878-2172.

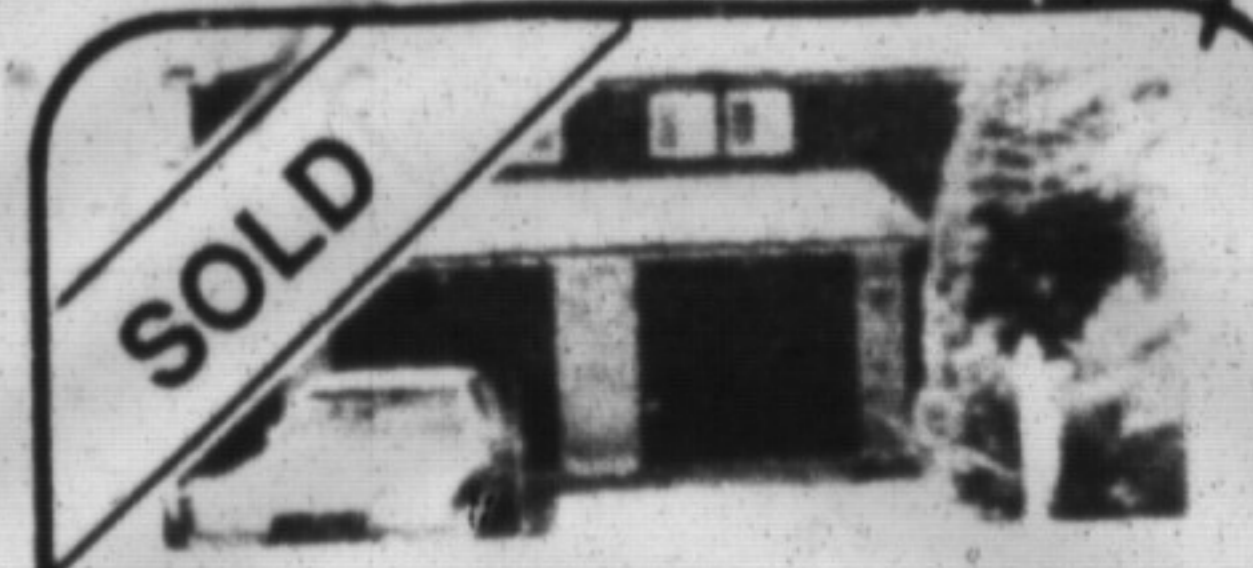
### INDUSTRIAL

Build to suit. Up to 14,000 sq. ft. Prime location - Main Street. Please call JOE MANCHISI at 878-8495 for further details.



### WANT TO BE IN THE SWIM?

This is exactly what you will be doing in the 3 bedroom raised bungalow with inground pool. Mature landscaping, 50x140 ft. "Fenced Lot", rec room with stone fireplace, extra insulation, lots of places, priced at \$209,800. For your personal viewing please call SANDRA A. BAILEY at 878-8495.



SOLD

### HOW SOON CAN YOU MOVE?

into the spotless clean townhouse. Freshly painted, 3 bedrooms, 2 bathrooms, finished rec room, shaded entrance, all the and a pool in the complex. Listed at \$155,800. For your personal viewing please call SANDRA A. BAILEY at 878-8495.



### VENDOR WANTS ACTION

FOUR bedrooms  
THREE bathrooms  
TWO storey detached  
ONE lovely home to view!  
Please call JOE MANCHISI for your personal viewing at 878-8495.



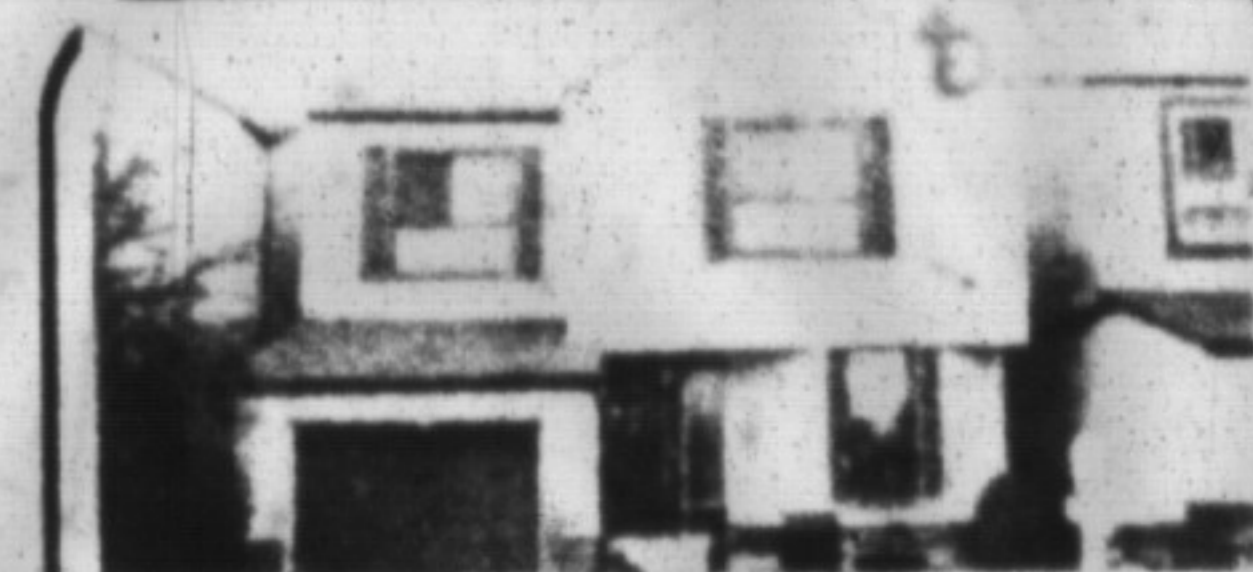
### PROFESSIONALLY FINISHED BASEMENT

is only one feature of the brick bungalow. 3+ bedrooms, eat-in kitchen, large mature fenced in lot with garden shed, new roof and eaves, paved drive. All this for only \$179,900. For further details or your personal viewing, please call BILL LENZKY AT 878-8495.



### FUTURE DEVELOPMENT POTENTIAL

Approximately 133 acre farm with over 2000 ft frontage on Steeles Ave. This property has two houses, 10 buildings, silos, etc. For more information on this and other land in the area, please contact JAMES D. SNOW at 878-8495.



### DONE TO THE 9's

This 4 bedroom beauty won't last long, as it's been reduced to \$186,900, and it features new broadloom, new windows & siding and finished basement, and more. For further details please contact SCOTT B. PRIOR at 878-8495.



### DRASTICALLY REDUCED

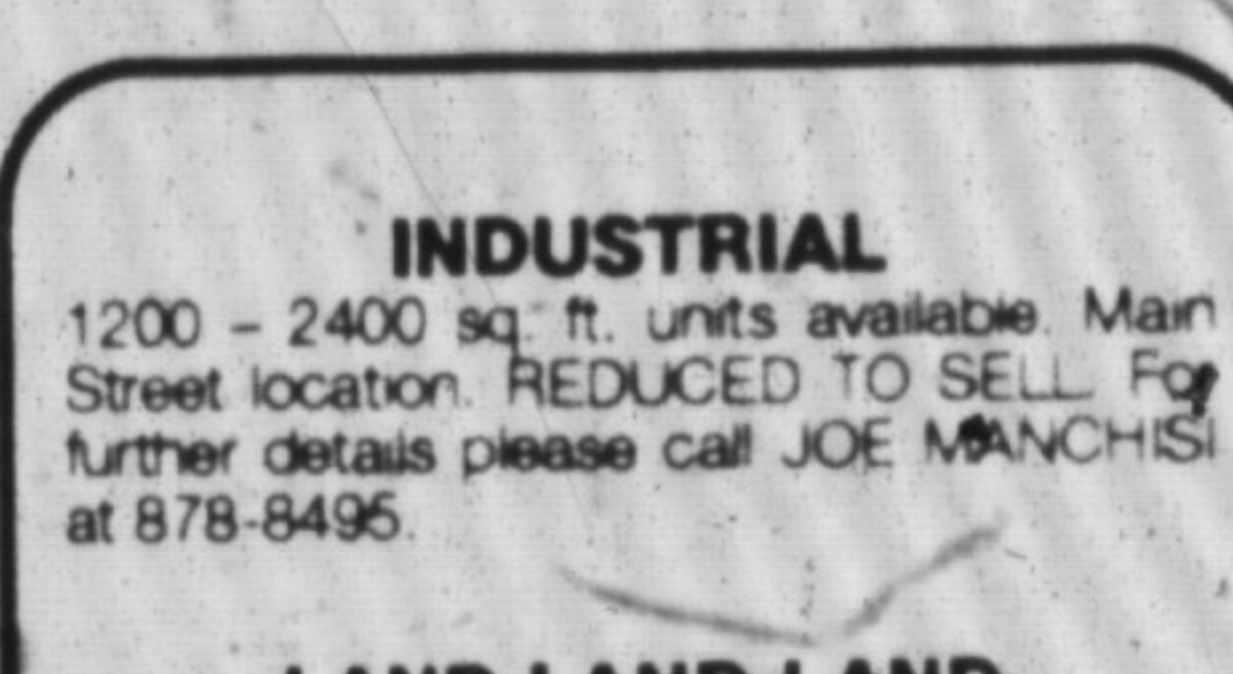
Take a look and see this 3 bedroom townhouse with separate dining room, finished family room and upgraded broadloom. Bright eat-in kitchen, a must-to-see! at only \$149,900. Please call JIM KERR at 878-8495 for further details.



### PRIME MILTON INDUSTRIAL

- 7 plus acres + Hwy 25 & 401 location
- Use to 50% Commercial potential
- 20,000+ sq. ft. of buildings

Please contact ERNIE ZAMMIT at 878-8495 for further details or your personal viewing.



### INDUSTRIAL

1200 - 2400 sq. ft. units available. Main Street location. REDUCED TO SELL. For further details please call JOE MANCHISI at 878-8495.

### LAND LAND LAND

97 acre corner farm in Halton Hills with potential galore. Great value at \$21,000 per acre. Please call ERNIE ZAMMIT at 878-8495.



### 3 MILES SOUTH OF MILTON

Sits a 3 bedroom bungalow on an acre of land. 2 fireplaces, greenhouse kitchen, sun porch with skylights and ceramic floor. Pole barn 16 high, separate 1 bedroom apartment with walkout. This home is a must to see at \$399,000. For your personal viewing please call LYNN WARDLE at 878-8495.



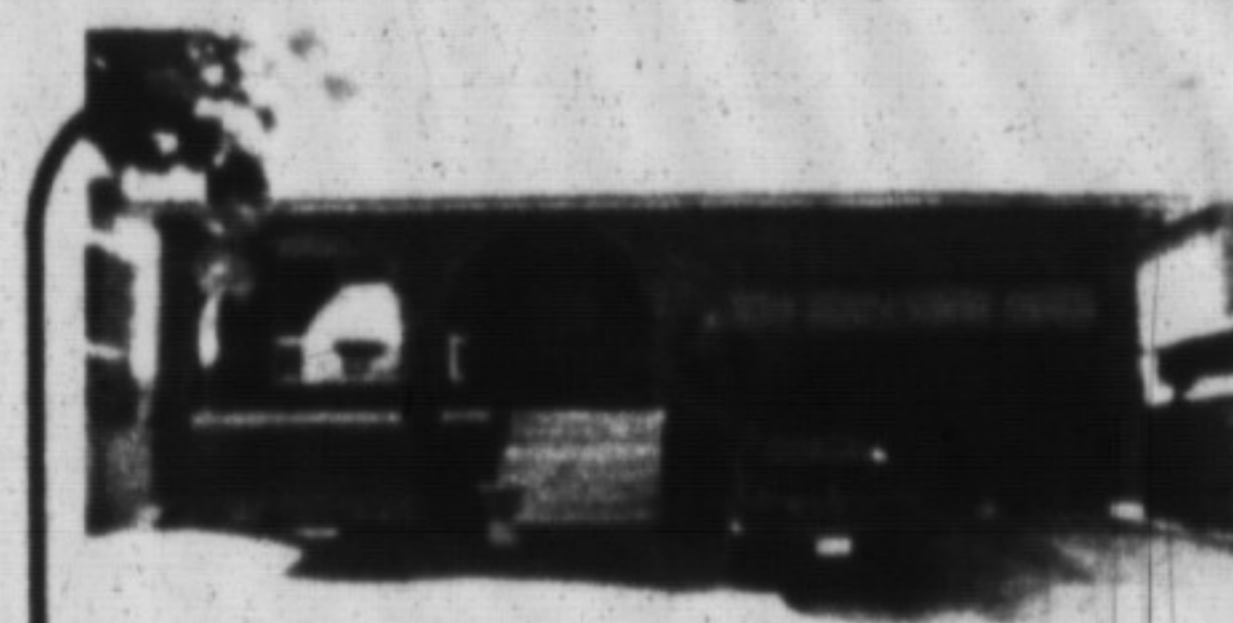
### RESIDENTIAL - COMMERCIAL COMBINATION

Very large lot with commercial zoning on half. Also has large older 2 storey brick home. For all the details and future possibilities please call JIM KERR at 878-8495.



### PRICED RIGHT

To view this 3 bedroom backdrop with finished basement and fully fenced yard, listed at \$199,900, please call JOE MANCHISI at 878-8495.



### WHEN THE HEAT IS ON

Cool off in the inground pool and enjoy the 4 bedroom, very spacious backdrop featuring an in-law suite, walk-out from family room and a large deck off the back. To view please call JOE MANCHISI at 878-8495.



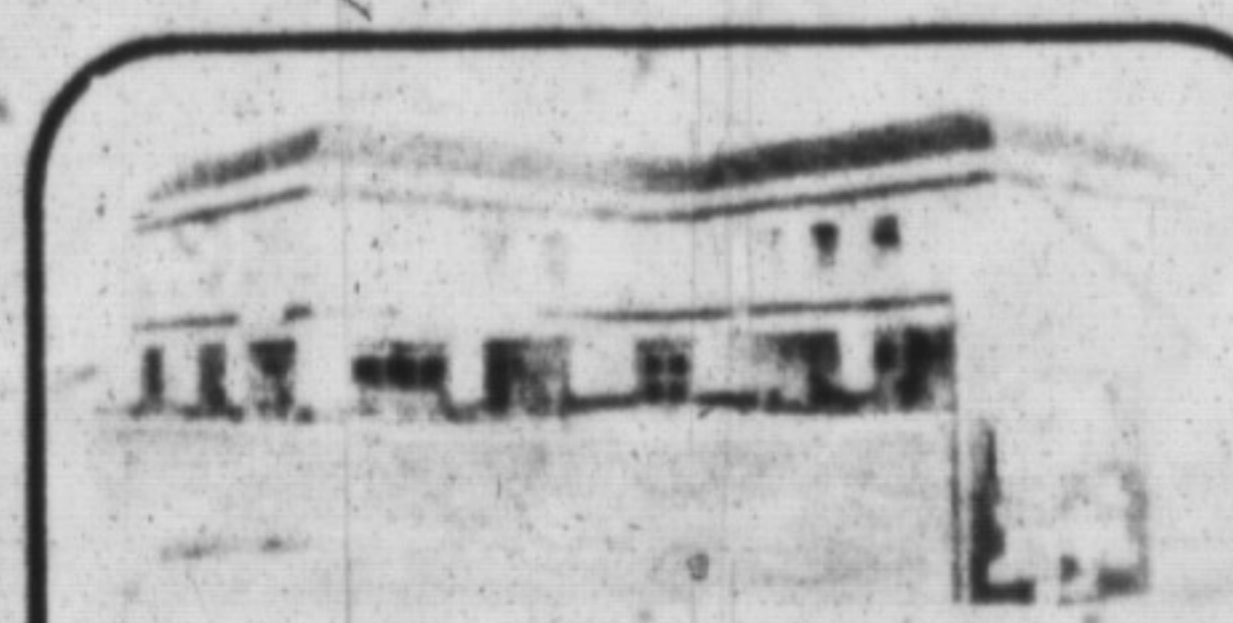
### FOR SALE - INDUSTRIAL M - 1 UNITS STARTING AT \$93,600

5200 sq. ft. available immediately. Four drive through doors.  
6800 sq. ft. available immediately. Four loading docks.  
1300 to 1700 sq. ft. available immediately. Loading dock.  
All the above feature a good Main Street location. Please call JIM KERR/RON TWISS at 878-8495 for further details.



### IDEAL FAMILY HOME

on professionally landscaped country lot, minutes to 401 and close to schooling. Brick bungalow featuring 3+ bedrooms, main floor family and laundry rooms, 4.3 and 2 piece baths, 2 fireplaces, central vac, central air, 200 amp service and insulated double garage with opener. Reduced to sell \$264,000. For more information please call BILL LENZKY at 878-8495.



### IDEAL LOCATION

This Medical centre caters to the medical profession and is across from the Milton Hospital. 5000 sq. ft. + available and can divide to suit. For your opportunity please call DON PELZ at 878-8495.



### A GREAT FAMILY HOME

This beautiful 5 level backdrop has plenty of room for a growing family, with 3 bedrooms upstairs and a possible one on the lower level, 2 full bathrooms, central air, floor to ceiling fireplace and more. Asking \$224,900. Please call SCOTT B. PRIOR at 878-8495 for further details.



### POOL SIZED LOT

is waiting for you when you purchase this three bedroom brick bungalow. Comes complete with a main floor family room, central air, appliances, drapes & curtains, single car garage, and other inclusions. Please call JOAN TAITRE for further details at 878-8495.