

RE/MAX®

Miltowne Realty Corp.

22 Ontario St. South

878-2365

Town & Country Real Estate

Bus. 878-2365
Res. 878-1084

"COMBINING 24 YEARS EXPERIENCE"



WAYNE WARNER
ASSOCIATE BROKER

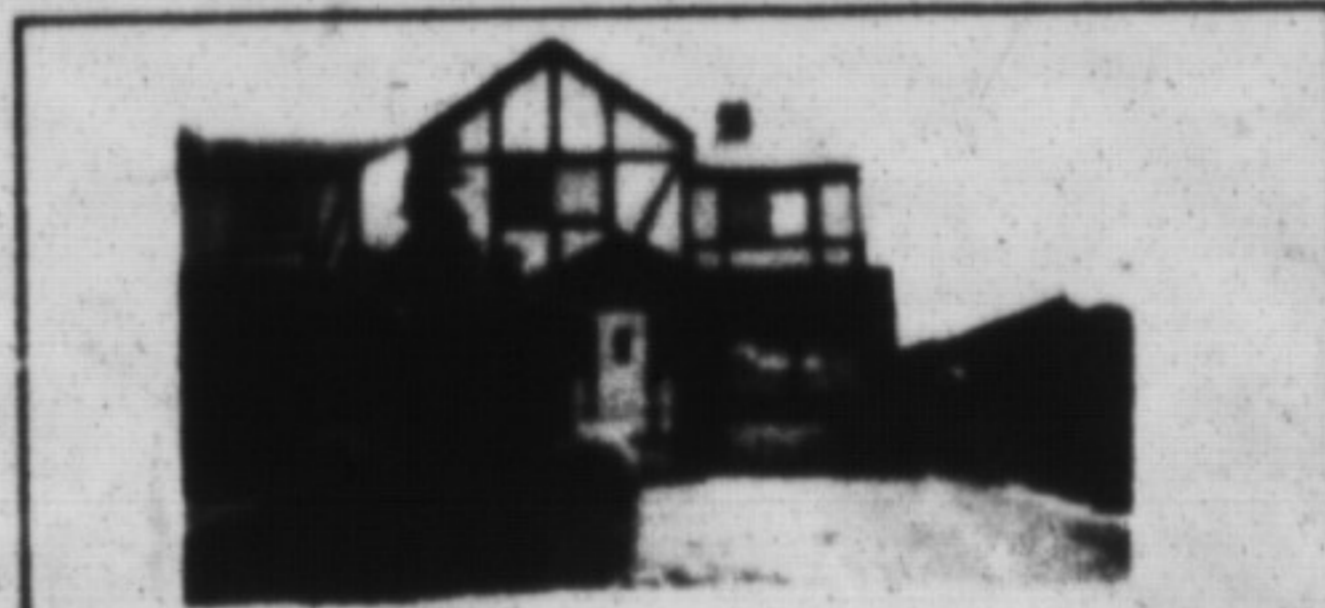


LINA WARNER
SALES ASSOCIATE



HOME-RAVINE-STREAM-POND-5.9 ACRES
\$549,000

MINUTES TO THE 401 this lovely side split home is nestled in a private wooded retreat. Featuring a Florida room that takes full advantage of the breathtaking view, a very generous living room with custom woodburning stove, separate dining room and walk-up basement. There is a potential guest house also! For an exclusive viewing, call Lina or Wayne

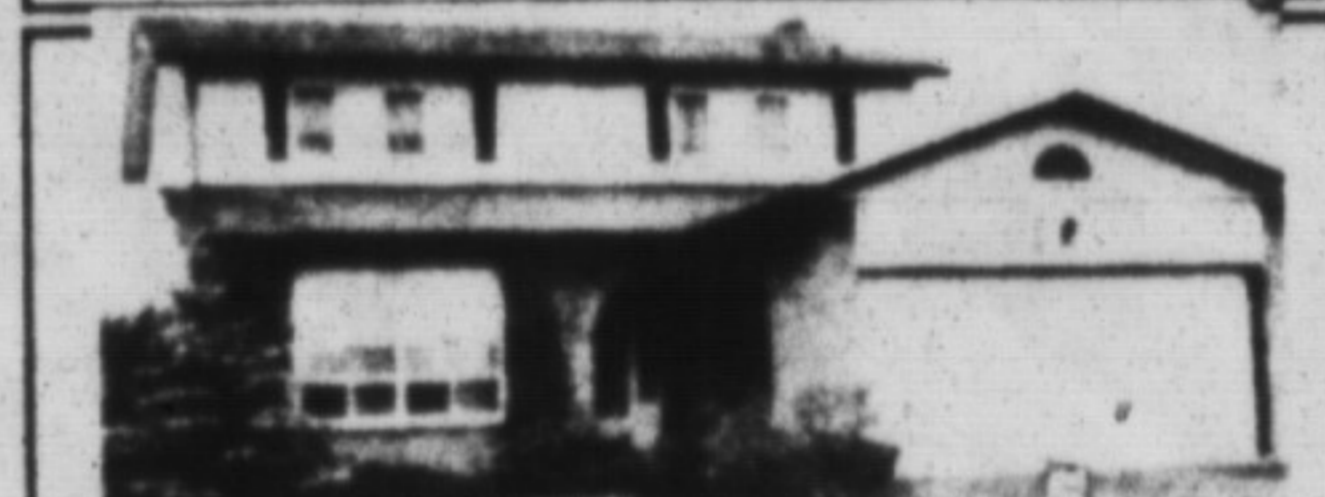


SPACIOUS AND COMFY \$189,900.
Air conditioned 4 bedrooms, 2 storey home, main floor family room, living room with fireplace above ground pool with decking, close to schools. Give us a call. Lina or Wayne



MOVE RIGHT IN
ROSEHEATH DRIVE \$186,500.

A generous living and dining area is comfortably located near the bright kitchen with convenient walkout. The master bedroom has a semi ensuite and the recreational area is professionally finished with a bar. Tastefully decorated so you can move right in!



GOWLAND CRESCENT \$289,900.

PRESTIGIOUS LOCATION boasts a lovely 2 storey 4 bedroom executive knockout! An exceptional lot (58'x132'), tastefully landscaped includes interlocking brick patio and walkways. Built-in custom wall units professionally finished basement (office, rec room, and play room) plus much much more! For a personal viewing call Lina or Wayne



ALAN BROOKS,
878-2365 Bus.
875-0067 Res.

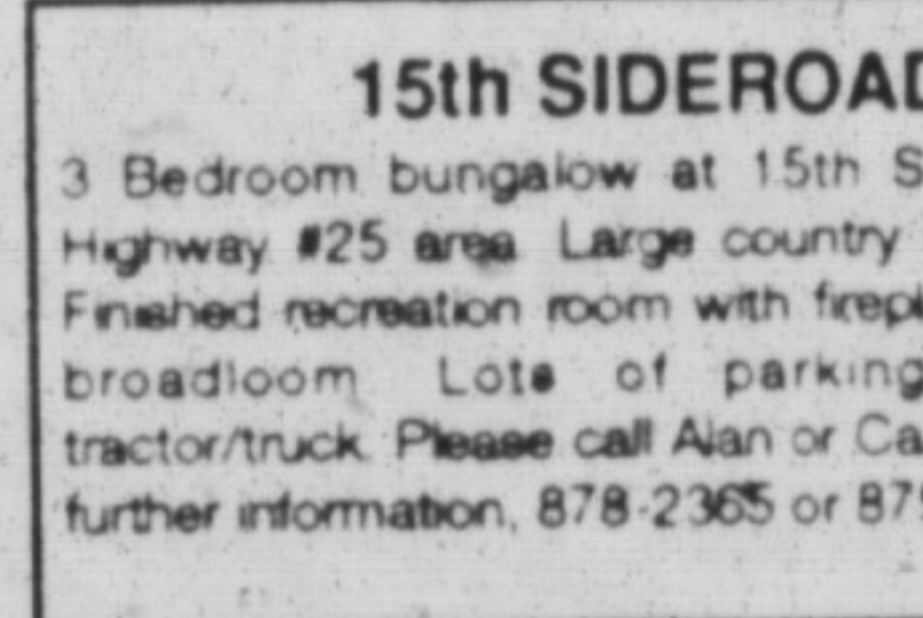


CAROL BROOKS
878-2365 Bus.
875-0067 Res.



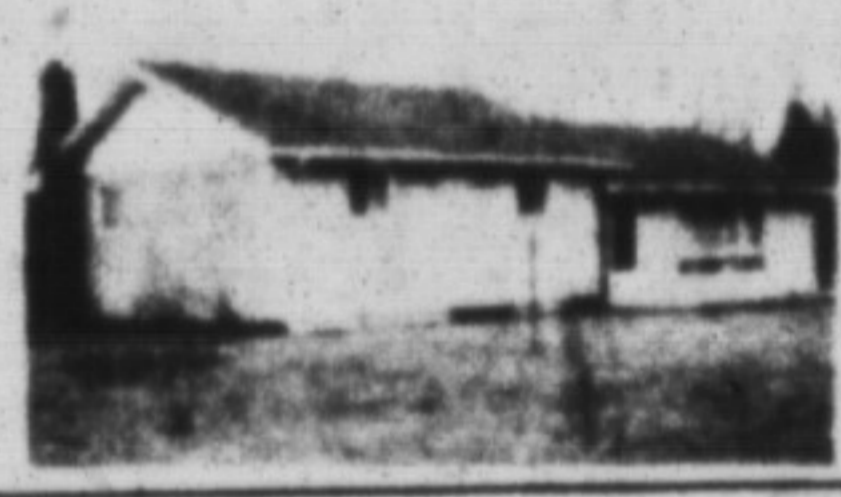
GUELPH LINE NORTH

Fresh and appealing, this comfortable raised bungalow offers 3 bedrooms plus a 4th on lower level and affordable country living. Phone Carol or Alan for your personal inspection. Just reduced to \$219,900



15th SIDEROAD

3 Bedroom bungalow at 15th Sideroad and Highway #25 area. Large country style kitchen. Finished recreation room with fireplace and new broadloom. Lots of parking for large tractor/truck. Please call Alan or Carol Brooks for further information, 878-2365 or 875-0067



MIKE MORGAN

Associate Broker
878-2365 878-8093 (Res.)
826-1030 (Tor. Line)



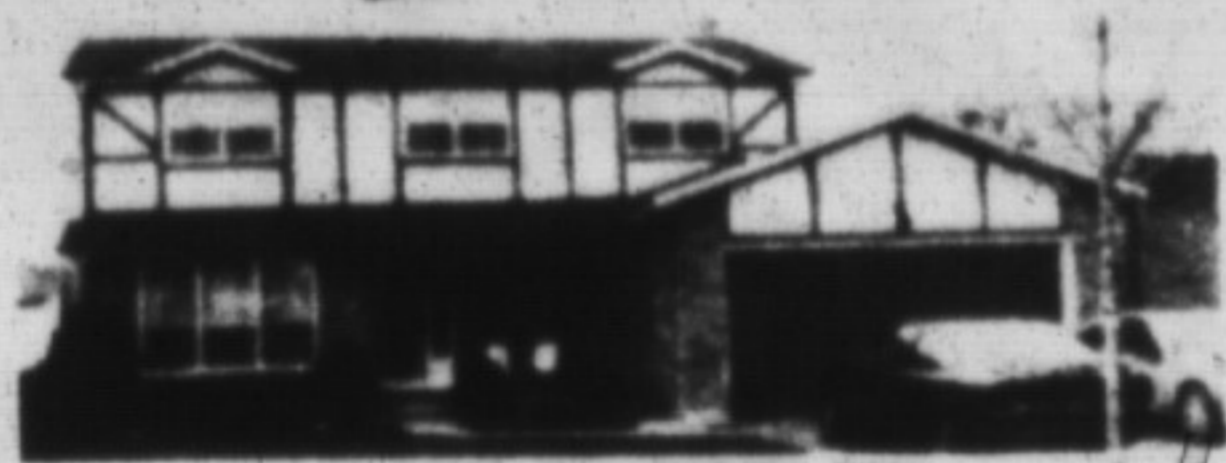
EDGE OF TOWN

For those of you who have said "I would like to live at the edge of town" Don't miss this opportunity. If a cozy maintenance free two bedroom brick bungalow suits your needs then you'll love the well landscaped 3/4 acre property with an 18'x36' kidney shaped marbleite in-ground heated pool. Why not see this private location-it is so close it is serviced by town water. Call Mike Morgan Just listed \$234,900



THE COUNTRY LIFE

See the charm and character of an older home with numerous modern, updated features, such as hi-efficiency gas furnace, 200 AMP electrical service, completely new roof with aluminum soffits, eaves and fascia. You'll be impressed with the 17'x11' living room, 16'x9'6" dining room and 18'x14'6" family room with woodstove. Added features are a large double detached garage, a 14'x24' workshop all on a 134'x133' lot. Please call Mike Morgan \$189,900.



YOU'RE ENTITLED...

To live your life in a home that offers convenience imagine yourself enjoying the cool central air & the built-in gas barbecue, the perks of a garage door opener, central vacuum and electronic air cleaner. Upgraded broadloom in neutral tones accents the two custom built fireplaces that help you make it through the seasons. Indulge yourself call Mike Morgan \$279,900.



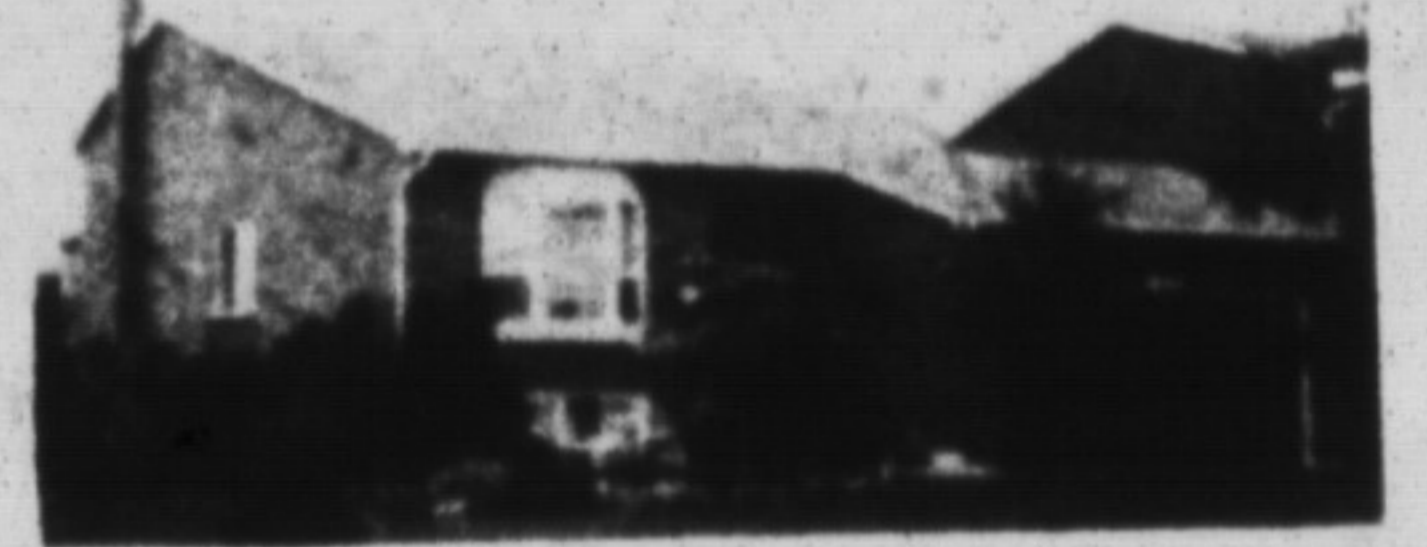
COZY

Beautiful brick bungalow full of charm and character complete with original trim, baseboard and hardwood floors. Large dining-room and separate living room with fireplace with insert and a front porch area. The 90' x 274' property is well treed and nestled in a village setting. Please call Mike Morgan \$199,900.

FEELING THE HEAT?

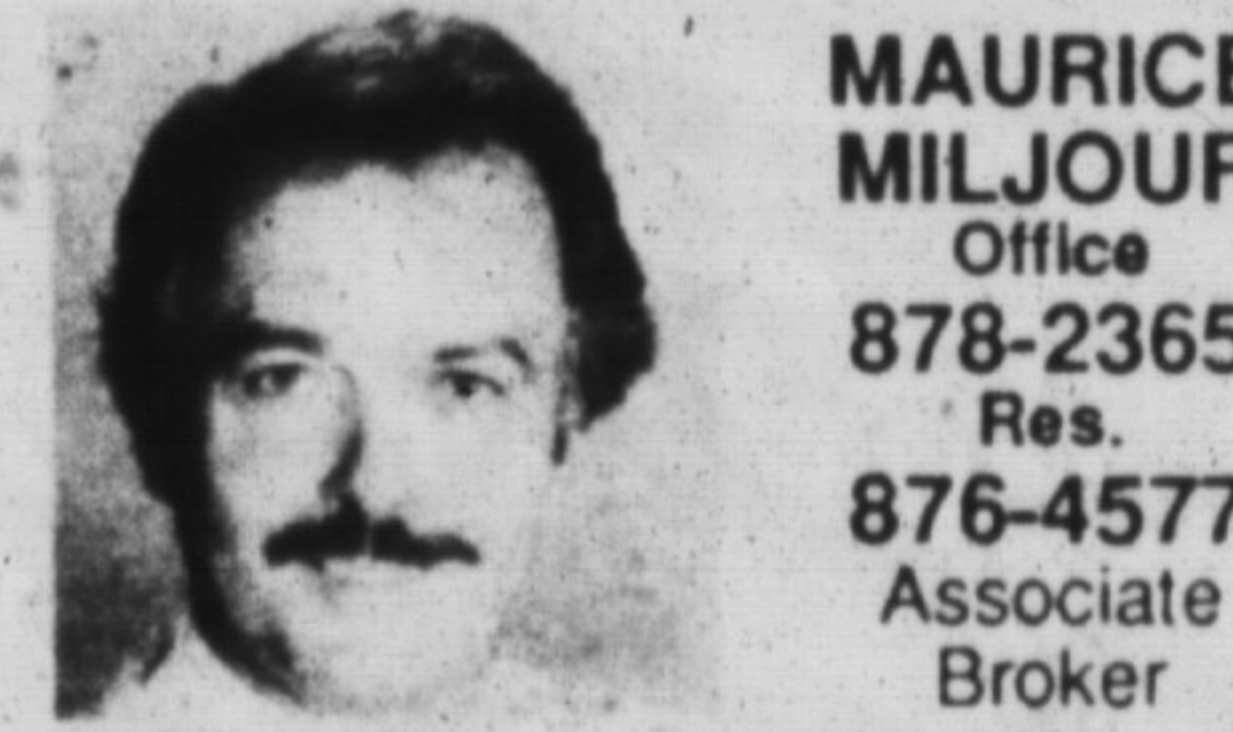


BETTY BRADING
878-2365 Office
878-6716 Res.



You can... Cool down in this good looking 3 bedroom brick backsplit! Desirable location, well cared for, well landscaped featuring 2 baths, rough-in central vac, cent air, fieldstone fireplace, main floor family room and so much more! Lot is fenced and gorgeous and the entire home must be seen to be appreciated. For your chance call Betty right NOW! Asking \$238,900.

MAURICE MILJOUR
Office
878-2365
Res.
876-4577
Associate Broker



SENSATIONAL SEMI-REDUCED

Two-storey brick and aluminum semi, close to the schools and shopping features 3 bedrooms, 2 baths, new broadloom in bedrooms, ceramic tile in kitchen and entranceway, partly finished rec. rm, single car garage and a walkout to a beautiful 10x20 cedar deck. Now \$173,900. For more information call listing agent Maurice Miljour 878-2365.



GROWING FAMILY?

Brick and aluminum Cape Cod in Dorset Park is perfect for you! A centre hall leads to the living room, separate dining room, main floor family room and large, uniquely designed eat-in kitchen. Featuring 3+ bedrooms, 2 baths, single car garage, huge lot, not to mention a finished lower level rec room and 4th bedroom. Call listing agent Maurice Miljour today! Asking \$209,500.



SUPER REDUCTION

Move into this 3 bedroom bungalow with 2 baths in Dorset Park before the kids start school. Offering inground pool and a huge lot as well as a finished basement perfect for gatherings, acom fireplace, built-in dishwasher, new gas furnace and brand new kitchen and broadloom. To view call listing agent Maurice Miljour today. Reduced to \$189,900

"FAMILY RESTAURANT" on large commercial lot

Contact Maurice



DOUG J. BUTSON

Office or Pager
878-2365
After Hour
878-2020

Re/Max Miltowne Realty Corp.

FOR LEASE

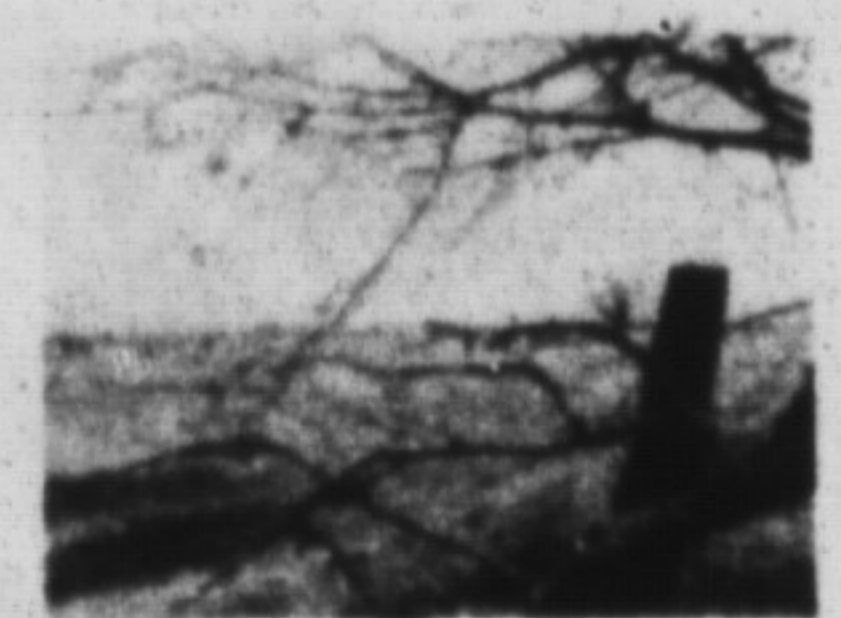
1630 sq. ft. oak trim Offices
1030 sq. ft. Sales Office
7700 sq. ft. Office/Warehouse

Classy bungalow with closed-in front porch, central air, new broadloom, 66x132 lot, auto garage door, eat-in kitchen, within walking distance to library and Milton Mall, immediate possession.



FAY COURT

Pool size lot, covered deck, 2nd lev. hutch, near park & schools at \$208,000.



N. OAKVILLE

300' x 300' country lot with drilled well, levies paid, next to century farm, \$247,000.