



420 MAIN ST., MILTON  
878-8495 Tor. Line 821-4764

GOLDEN REAL  
ESTATE LIMITED

Jim & Lorraine Kerr  
Brokers/Owners



**FIRST TIME OFFERED**

Spacious three bedroom brick bungalow on a good sized lot includes appliances, drapes and has central air, main floor family room with fireplace and single car garage. For the rest of the details please call JOAN TATTRE at 878-8495 or (real) 878-1575.

**REDUCED**  
to \$155,800.

**HOW SOON CAN YOU MOVE ?**

into the spotless, clean townhouse. Freshly painted, 3 bedroom, 2 bathrooms, finished rec room, shaded entrance, all tile and a pool in the complex. Listed at \$167,900. For your personal viewing please call SANDRA A. BAILEY at 878-8495 \$155,800.



**IN THE MATURE PART OF TOWN**

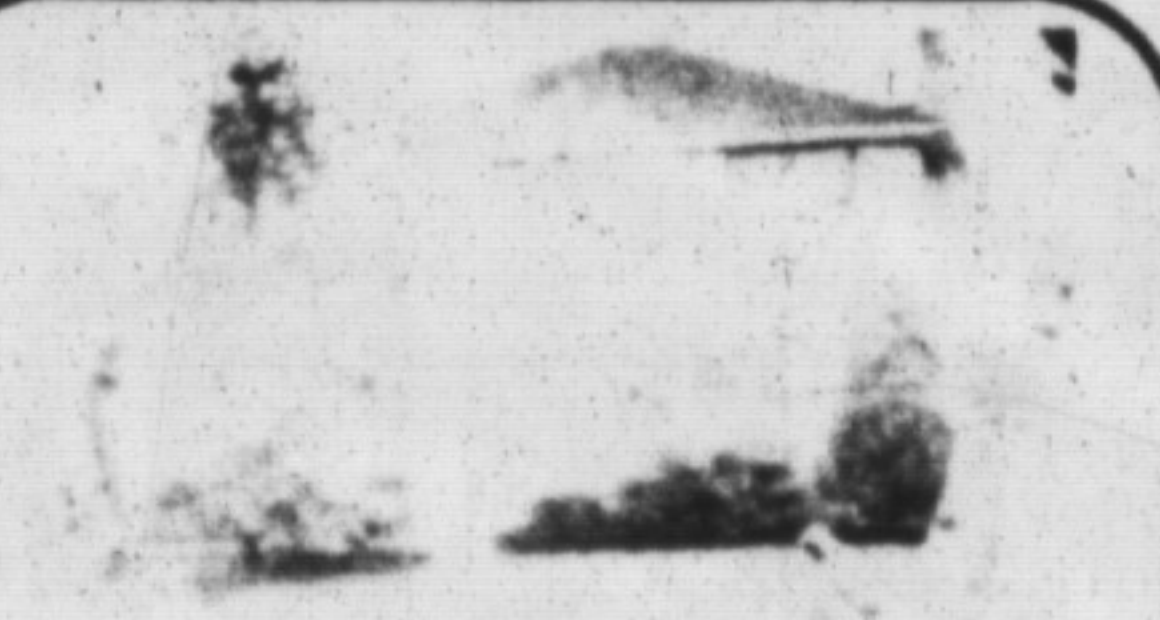
you'll find the 3 bedroom house with a main floor family room and good size eat-in kitchen, comes complete with fridge and stove, numerous upgrades and a pool size lot. For more information, please call JOAN TATTRE at 878-8495 or (real) 878-1575.

**REDUCED**  
\$7.00 sq. ft.



**4400 SQ. FT. - MAIN STREET COMMERCIAL**

Front and back entrance - Lots of Parking. The Price is Right! Please contact JIM KERR for further details at 878-8495.



**ATTENTION INVESTORS**

Over 10 acres of land with a two-story home and out buildings. The property is next to industrial and currently being developed and is now zoned agricultural. Asking \$1,300,000. For more information please call 878-8495 and ask for JAMES D. SNOW.



**BE IT EVER SO HUMBLE**

Own your own home! Why pay rent or condominium fees when you can have your own single family residential home. This home was built to endure; add to it as the family grows or leave as is and use it as retirement insurance, whether you live in or rent it out. Reduced to \$159,000. For further information please contact KATHLEEN PERFECT at 878-8495.



**REDUCED**  
to \$209,800.

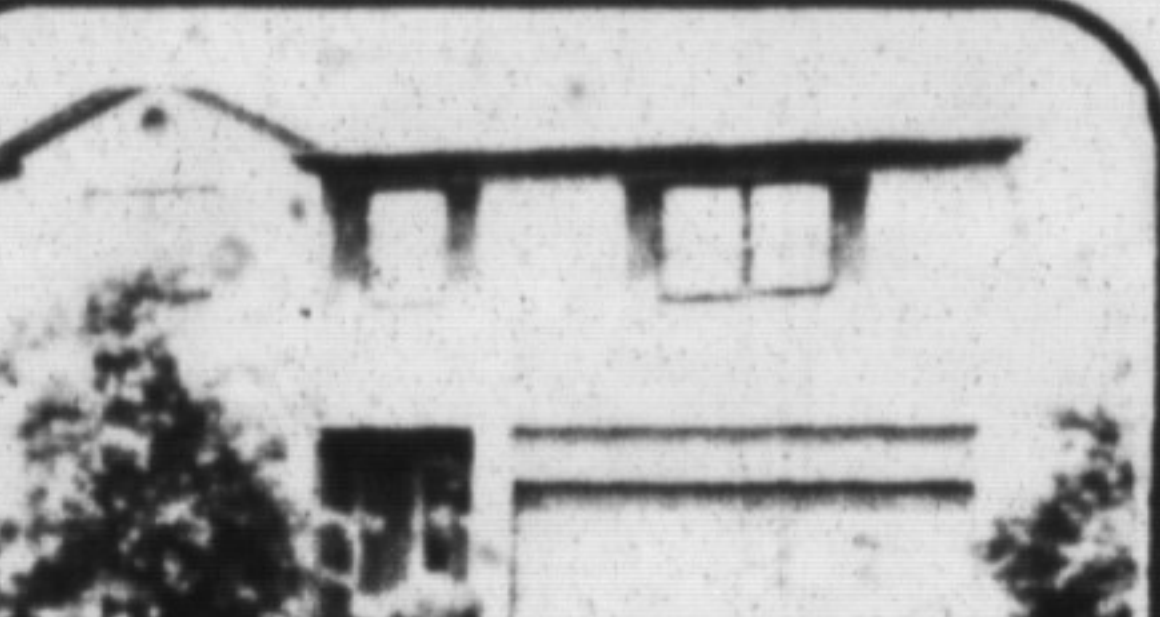
**WANT TO BE IN THE SWIM ?**

This is exactly what you will be doing in the 3 bedroom raised bungalow with inground pool. Mature landscaping, 50x140 ft. "Fenced Lot" rec room with stone fireplace, extra insulation, lots of pluses, priced at \$209,800. For your personal viewing please call SANDRA A. BAILEY at 878-8495.



**25 ACRES PLUS CENTURY STONE HOME**

Top of Milton Escarpment. This home has country charm. Features original pine floors & wainscoting. Huge family dining room. Close to 401, schools and shopping. Asking \$550,000. For more information please call BILL LENZKY at 878-8495.



**VENDOR WANTS ACTION**

**EQUAL** bedrooms  
**THREE** bathrooms  
**TWO** story detached  
**ONE** lovely home to view.  
Please call JOE MANCHISI for your personal viewing at 878-8495.



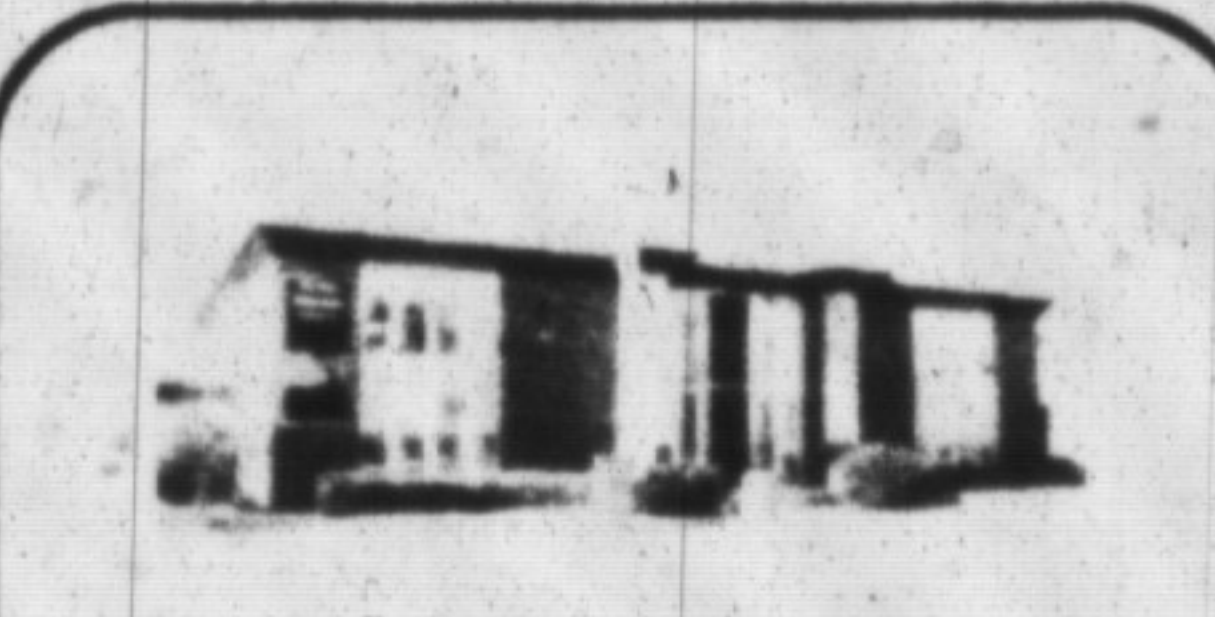
**PROFESSIONALLY FINISHED BASEMENT**

is only one feature of this brick bungalow. 3+ bedrooms, eat-in kitchen, large mature fenced in lot with garden shed, new roof and eaves, paved drive. All this for only \$179,900. For further details or your personal viewing, please call BILL LENZKY at 878-8495.



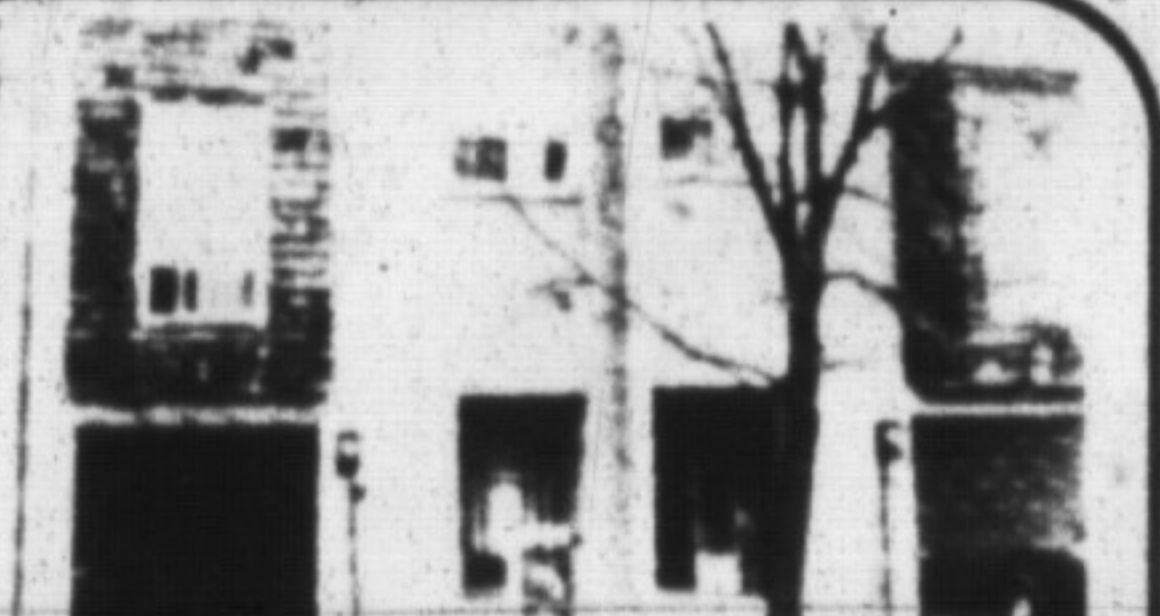
**FUTURE DEVELOPMENT POTENTIAL**

Approximately 133 acre farm with over 2000 ft. frontage on Steeles Ave. This property has two houses, 10 buildings, silos, etc. For more information on this and other land in the area, please contact JAMES D. SNOW at 878-8495.



**MAIN ST. MEDICAL BUILDING**

Professional office space available immediately. Please call SCOTT B. PRIOR for further details. 878-8495.



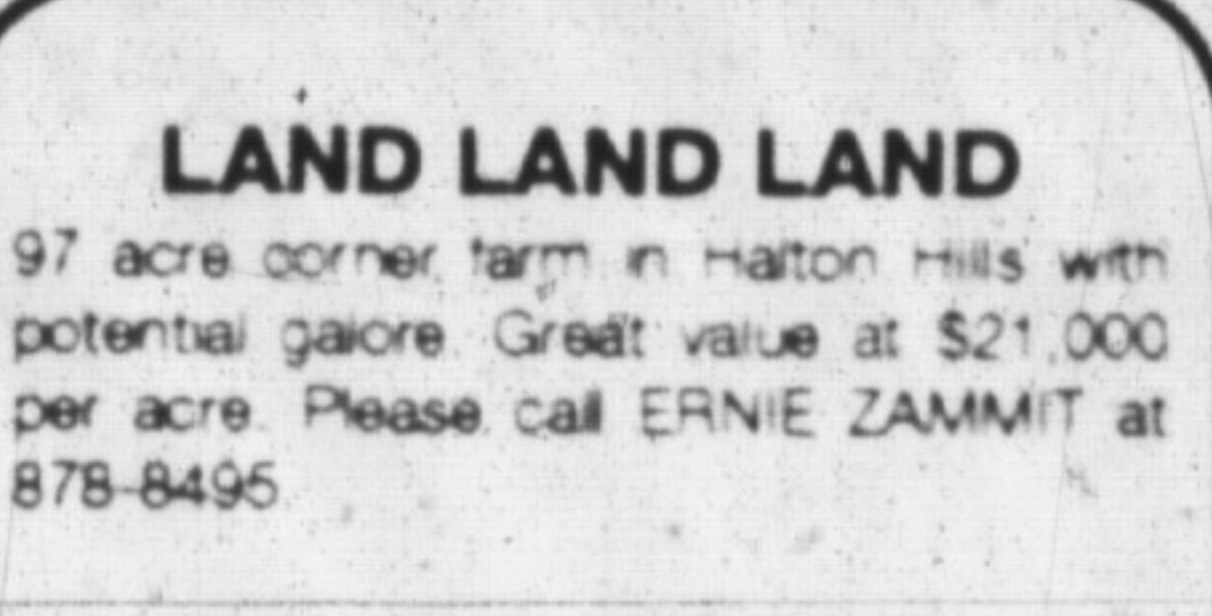
**DRASTICALLY REDUCED**

Take a look and see this 3 bedroom townhouse with separate dining room, finished family room and upgraded bathroom. Bright eat-in kitchen - a must to see at only \$149,900. Please call JIM KERR at 878-8495 for further details.



**PRIME MILTON INDUSTRIAL**

• 7 plus acres • Hwy. 25 + 401 location  
• UP to 50% Commercial potential  
• 20,000+ sq. ft. of buildings  
Please contact ERNIE ZAMMIT at 878-8495 for further details or your personal viewing.

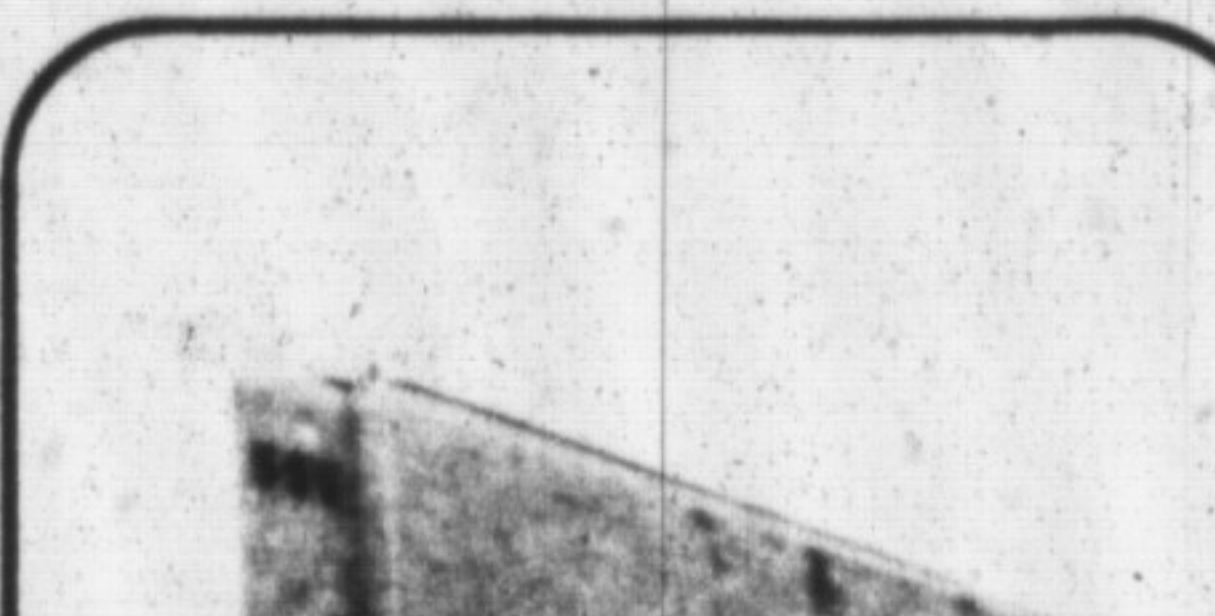


**LAND LAND LAND**

97 acre corner farm in Halton Hills with potential galore. Great value at \$21,000 per acre. Please call ERNIE ZAMMIT at 878-8495.

**INDUSTRIAL**

1200 - 2400 sq. ft. units available. Main Street Location. REDUCED TO SELL. For further details please call JOE MANCHISI at 878-8495.



**FOR SALE - INDUSTRIAL M-1 UNITS STARTING AT \$93,600.**

5200 sq. ft. available immediately  
Four drive through doors  
6800 sq. ft. available immediately  
Four loading docks  
1300 to 1700 sq. ft. available immediately. Loading dock.  
All the above feature a good Main Street location. Please call JIM KERR/RON TWISS at 878-8495 for further details.



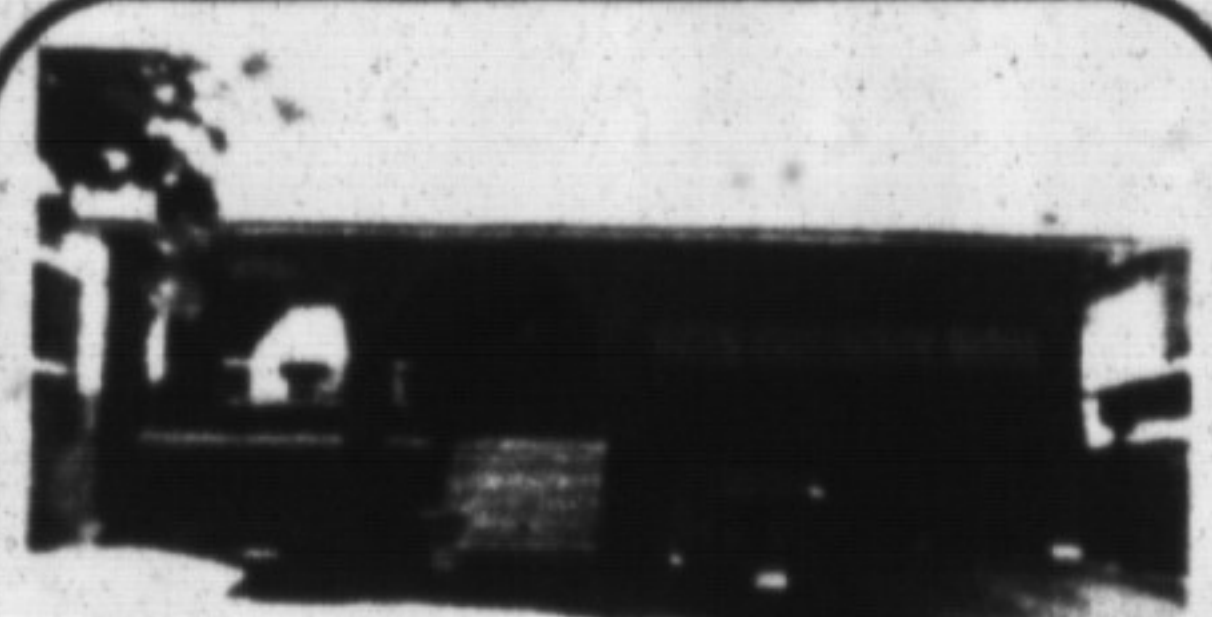
**RESIDENTIAL-COMMERCIAL COMBINATION**

Very large lot with commercial zoning on half. Also has large older 2 story brick home. For all the details and future possibilities please call JIM KERR at 878-8495.



**PRICED RIGHT**

To view this 3 bedroom backsplit with finished basement and fully fenced yard, listed at \$199,900., please call JOE MANCHISI at 878-8495.



**WHEN THE HEAT IS ON**

Cool off in the inground pool and enjoy the 4 bedroom, very spacious backsplit featuring an in-law suite, walk-out from family room and a large deck off the back. To view please call JOE MANCHISI at 878-8495.

Jim Kerr 878-8495  
Lorraine Kerr 878-8495  
William Lenzky 853-3797  
Joe Manchisi 335-5489  
Don Peiz 878-1029  
Nova Sparks-Austin 878-6728  
Charles Kerr 338-7248

Kathleen Perfect 878-1575  
Dawn Pope 878-8495  
Scott B. Prior 878-1251  
James D. Snow 878-2172  
Joan Tatne 878-1575  
Jim Bailey 875-0037  
Sandra Bailey 875-0037

420 MAIN ST., MILTON  
**878-8495**  
Toronto Line 821-4764

Bill Gear 335-9689  
Diane Gibbons 335-5489  
Douglas Jones 878-4957  
Carlo Giangrande 878-1031  
Ron Twiss 878-4056

Lynn Wardie 878-1554  
June Warner 853-2918  
Sonja Williamson 875-1924  
Ernie Zammit 878-9475  
Paddy Gill 878-0085

Office Staff: Marie Austen, Jennifer Coles, Barbara Wood, Lori Behenden