

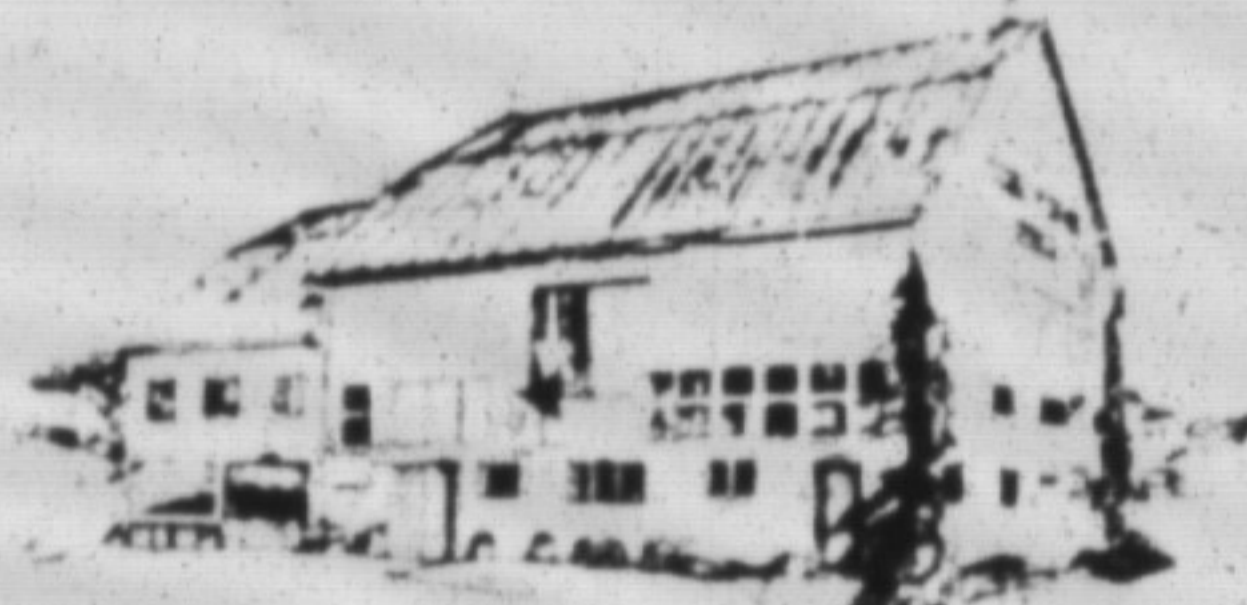
100 Produce

*Springridge*  
red tart pie

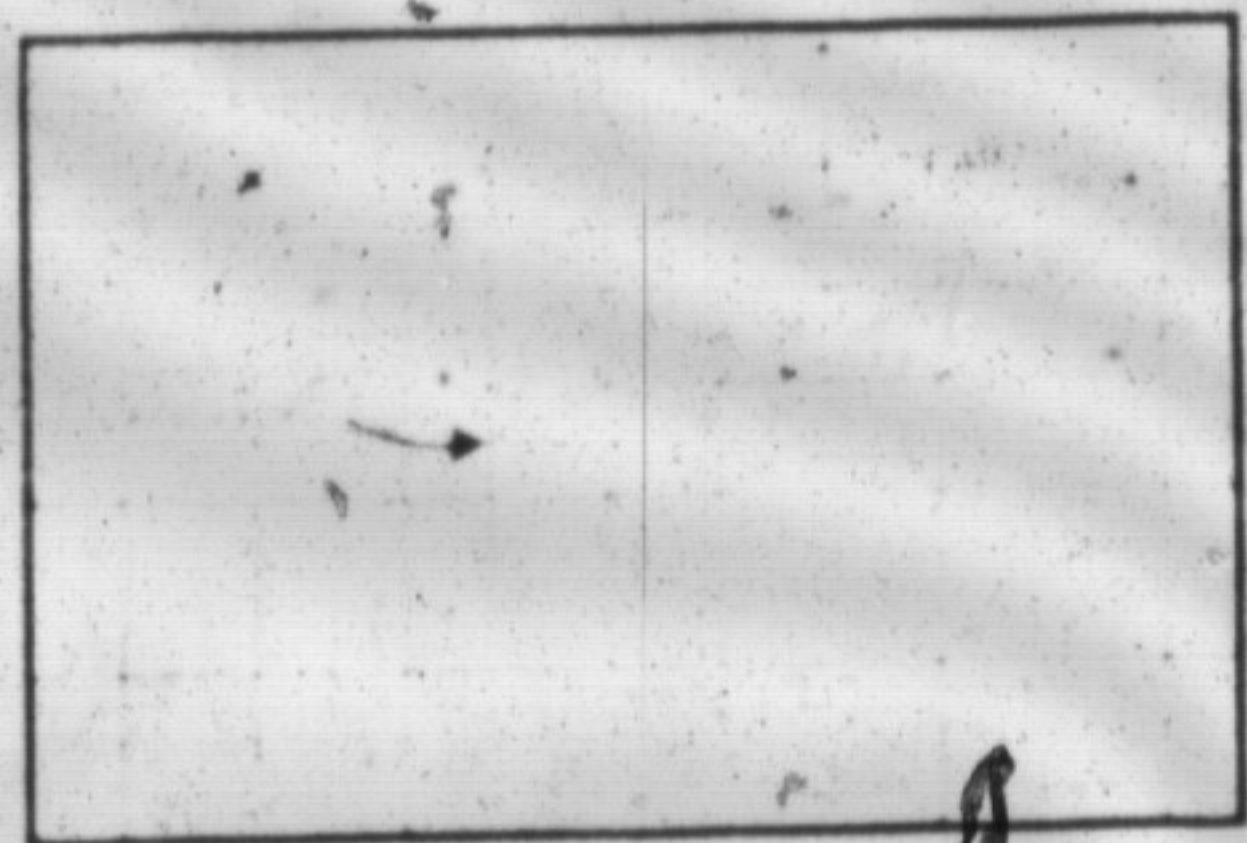


**Cherries**

Pick Your Own  
or Ready Picked  
"Picking is Free"



Baking + Preserves  
Country Gifts  
Farm Animals  
Daily 8-8



*Springridge Farm*  
Milton, 878-3278

50 ACRES OF Standing hay, Campbellville area  
1-659-7972

GOOD QUALITY mixed hay in large (1000 lb)  
round bales \$25 per bale in field. Delivery may  
be arranged 845-0960

NEW CROP Garden peas. A special variety of  
young tender peas, freshly picked, shelled,  
blanched and individually "flash frozen". Now  
available for about 1 month. New 5 lb size,  
\$5.75 or 10 lb size, \$9.75 MacMillans Highway  
7, 1 mile west of Acton. Open Sundays 853-  
0311

STRAW for sale from combine 824 2455, Hornby  
area

103 Home Improvements

**D & D MAINTENANCE**

- Chimney Sweeps
  - General Repairs
  - Home Improvements
- Free Estimates  
878-8028

105 Garden & Landscape Sup.

GARDEN SOIL  
SAND  
GRAVEL

We deliver.  
876-4100  
Taylor Nursery

SCREENED Topsoil, garden soil, well rotted  
manure. Picked up or delivered. Phone 854-  
2479

110 Heavy Equip. For Sale

1985 FORD F150-LTD, HALF TON Massey Fer-  
guson 235 diesel tractor, 400 litre orchard  
sprayer-3 point hitch, 9' foot wide 3 bladed Per-  
fect Orchard Mower, 3 point hitch scoop, revers-  
ible scraper blade, 3 point hitch fertilizer  
spreader, brand new Kasco protective helmet  
plus misc. orchard equip. Call after 6.30 p.m.  
854 2482

140 Handyman

RENOVATIONS Drywall - Custom Woodwork  
Suspended Ceilings, Taping & Finishing  
Repair Work. Painting for Kitchen, dens,  
bathrooms, etc. For free estimates call Bill 634-  
3969

145 General Help Wanted

**THE YMCA**  
ACTON/GEORGETOWN  
MILTON

**YMCA**  
POSITIONS AVAILABLE  
CENTRE DIRECTOR

Full time ECE required for Milton Junior Y Day  
Care. Must hold an ECE certificate or e-  
quivalent and have at least 2 years ex-  
perience in childcare. Competitive salary, ex-  
cellent benefits.

**ECE TEACHER**

Full time ECE required for Milton Junior Y Day  
Care. Must hold an ECE certificate or  
equivalent. Competitive salary, excellent  
benefits.

**PART-TIME POSITIONS**

Available in Milton, Georgetown and Acton in  
pre-school and schoolage childcare  
programs. Experience working with children  
preferred. YMCA training is provided. Com-  
petitive salaries.

For more information call:  
878-1602

3RD YEAR APPRENTICE

For  
Busy Auto Repair Shop  
Apply in person  
weekdays 8 a.m. to 6 p.m.  
M. DURANTE ENTERPRISES LTD  
Hwy. 25, just north of the 401

**MILTON**

**IMMEDIATE**  
WAREHOUSE POSITIONS  
GOOD WAGES  
Call collect  
454-3312

WORK  
FORCE

Residential Support Workers

Full time, overnight and part time positions,  
available to support individuals with an intel-  
lectual handicap (D.S.W. or B.A. with related  
experience. Car required for full time position.  
Starting salary \$20,528 full time, \$16,680  
overnight, \$7.69/hr. part-time. Call

**GAYLE COVEY**  
275-4705

Community Living Mississauga

SCHOOL BUS DRIVERS

Required for Milton, Georgetown, Campbell-  
ville areas \$26.00 and over daily for  
approximately three hours work. Weekends  
and summers off. B Licence an asset or we  
will provide free in-depth training.

Call the Bus People  
**LIDLAW TRANSIT**  
878-4448

SHIPPER/RECEIVER

A local wholesale firm is looking for ex-  
perienced Shipper/Receivers.  
At least 1-2 years experience in a warehouse  
environment is necessary, as is the ability to  
drive a fork lift, pack and receive orders and  
have some experience with inventory counts.  
Those interested in this position should  
respond in writing to:

**TEE COMM ELECTRONICS**  
775 Main Street East  
Milton, Ontario  
L9T 3Z3

STUDENTS to help with hay. Howard Gowland  
878-6456

145 General Help Wanted

**LOOKING...  
FOR A SUMMER JOB?**

WE NEED YOU...

**ALL LIGHT  
INDUSTRIAL  
WORKERS**

For Plant, Warehouse and Assembly Line projects in Milton.  
No Experience Necessary - Male & Female.  
STUDENTS THIS INCLUDES YOU!!  
Permanent, Temporary and Temp-To-Perm positions available  
NOW!!! Top Dollar (Bonuses available)

Class A & D Drivers Also Needed  
plus **FORKLIFT OPERATORS** (High Reach)

CALL TODAY - WORK TODAY

You Work For Us And We'll Work For You!

**CALL 849-5800**



700 Dorval Drive, Suite 208, Oakville  
8 a.m. - 5 p.m. Mon-Fri  
We Like People Like You

Mail Clerks

We are a large Canadian company and  
have immediate openings for Mail Clerks in  
our head office in Mississauga.

These entry-level positions require people  
who are neat and personable, good  
communication skills and 35-40 wpm  
typing, as well as a minimum of Grade 11  
education.

Resumes outlining education, experience  
and salary expectations may be directed to:  
Lynda Greer, P.O. Box 2200  
Streetsville Stn., Mississauga, Ontario  
L5M 2H3.

WAREHOUSE SUPERVISOR

A leader in manufacturing and distribution  
of TVRO equipment requires an ex-  
perienced warehouse supervisor.

We are looking for a supervisor with 3-5 years  
experience. Must have the ability to drive a  
fork lift and process all necessary paperwork  
for incoming and outgoing orders.

If interested, please apply in writing to:  
**TEE COMM ELECTRONICS**  
775 Main Street East  
Milton, Ontario  
L9T 3Z3

145 General Help Wanted



**Mac's**  
CONVENIENCE  
White Oaks Plaza

**FULL TIME NIGHT SHIFT**  
\$7.50 per hour to start  
Benefits negotiable  
Apply in person to Nancy  
during normal business hours.



**MATURE PART TIME CASHIERS**  
required for  
Afternoon, Evening & Saturday Shifts  
Please apply in person to  
**Quality Greens**  
228 Main St.  
Ask for Karen or Norma Jean

**FULL TIME**  
**FEED MILL & FARM HELPER**  
required  
Phone Bill, between 8 & 5 at  
877-0556

**SCHOOL  
BUS DRIVERS!**

we will train you NOW  
for "BACK TO SCHOOL"  
in the fall

**WE WILL TRAIN YOU FREE!  
FOR AN IDEAL  
PART-TIME JOB.**

For the homemaker and the self-  
employed who want to supplement  
their income.  
Retirees who wish to remain active!  
Shift workers who wish to work a  
spare morning or afternoon.

AND TAKE YOUR CHILDREN WITH YOU  
"MUST MEET PROVINCIAL  
LICENSING REQUIREMENTS"

**LIDLAW**

FOR MORE  
INFORMATION

**877-2251**

